

AMAN DEEP — ABSOLUTE



Builder: ABSOLUTE

Year Built: 2015

Model: Motor Yacht

Price: PRICE ON APPLICATION

Location: United States

LOA: 58' (17.68mm)

Beam: 16.5

Max Draft: 4' 5" (1.35mm)

Cruise Speed: 12 Knots Kts. (14 MPH)

Max Speed: 26 Knots Kts. (30 MPH)

Our experienced yacht broker, Andrey Shestakov, will help you choose and buy a yacht that best suits your needs **AMAN DEEP — ABSOLUTE** from our catalogue. Presently, at Shestakov Yacht Sales Inc., we have a wide variety of yachts available on our sale's list. We also work in close contact with all the big yacht manufacturers from all over the world.

If you would like to buy a yacht **AMAN DEEP — ABSOLUTE** or would like help answering any questions concerning purchasing, selling or chartering a yacht, please call **+1(954)274-4435**

TABLE OF CONTENTS

TABLE OF CONTENTS	2
SPECIFICATIONS	3
Overview	3
Basic Information	4
Dimensions	4
Speed, Capacities and Weight	4
Accommodations	4
Hull and Deck Information	4
Engine Information	4
PHOTOS	5
CONTACTS	12
Contact details	12
Telephones	12
Office hours	12
Address	12

SPECIFICATIONS

Overview

Solidity and harmony, strength and grandeur: all at your fingertips. Welcome aboard the Absolute Navetta 58. This voluminous boat is easily maneuvered in complete autonomy, with cutting-edge technological equipment always at hand, and with reliability of solutions designed entirely within the walls of our shipyard.

Outdoors, relaxation is ensured by the sun loungers on the flybridge and in the bow area, reachable with ease and maximum safety. On the upper deck, you find a central helm station, a comfortable bar cabinet, a dining table with two sofas, and a panoramic, protected terrace. The bow area has an enviable sundeck, reachable thanks to wide, side-walkways and ergonomic handrails.

Aboard the Navetta 58, the spaces are designed having functionality and versatility in mind. They provide all guests with the maximum livability possible.

The salon and cockpit—finely furnished and well-equipped—are perfect for a practical and dynamic life on board. The aft galley has a large worktop, a full-sized fridge, a four-burner cooktop, a sink, a dishwasher, and is separated by an electric sliding glass partition.

The helm station is ergonomic and has no central pillars on the windshield, ensuring unparalleled visibility whether standing or seated. The dashboard features EmpirBus home automation technology and can be equipped with two 17-inch GPS monitors with an access door to the side walkway to ease mooring operations.

The lower deck includes two comfortable and elegant double cabins. The master cabin is placed midship while the VIP suite is located in the bow. Both cabins featured pillarless double-sided windows, spacious wardrobes, generous storage capacity, refined furniture with high-quality materials, desks, vanity areas, and en suite heads.

The third guest cabin features twin beds that can be joined electrically into a double berth, as well as an en suite head.

All of the areas below deck have sliding doors that maximize space and increase the livability of each room.

Also included is a 2020 Agilis 355 Rotax 1503 Tender in like new condition.

Basic Information

Category: Motor Yacht

Model Year: 2015

Year Built: 2015

Country: United States

Dimensions

LOA: 58' (17.68mm)

Beam: 16.5

Max Draft: 4' 5" (1.35mm)

Speed, Capacities and Weight

Cruise Speed: 12 Knots Kts. (14 MPH)

Cruise Speed Range: 1000

Max Speed: 26 Knots Kts. (30 MPH)

Water Capacity: 158.8 Gallons

Fuel Capacity: 634.01 Gal Gallons

Accommodations

Total Cabins: 3

Total Heads: 3

Hull and Deck Information

Hull Material: Fiberglass

Engine Information

Engines: 2

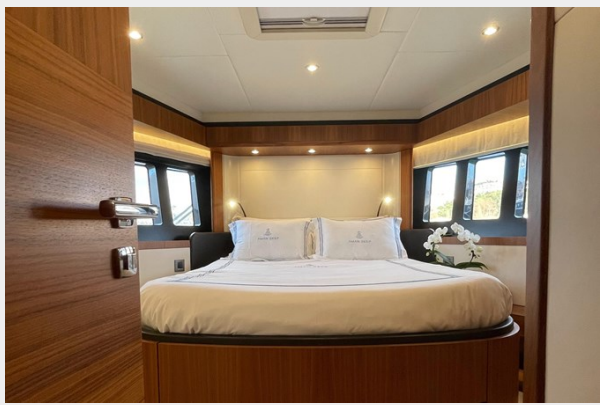
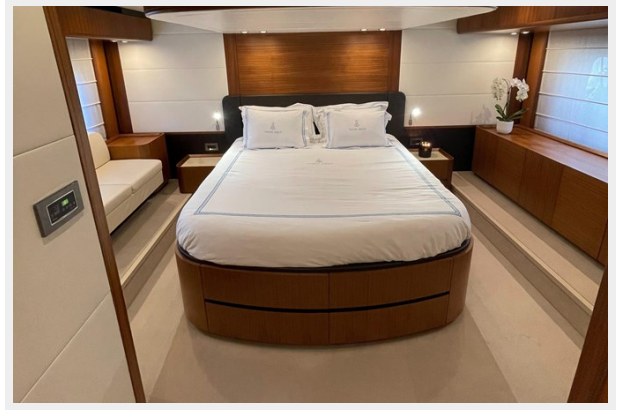
Manufacturer: Volvo Penta

Engine Type: Inboard

PHOTOS

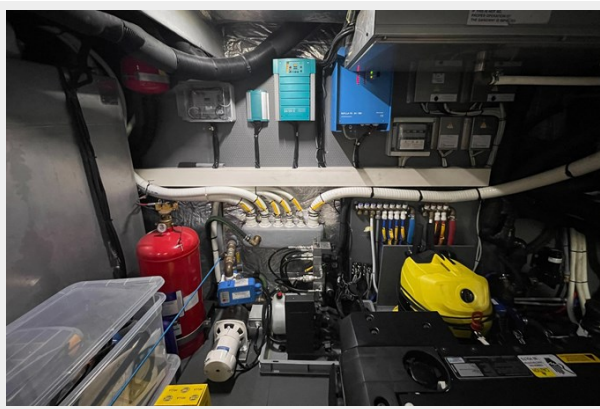
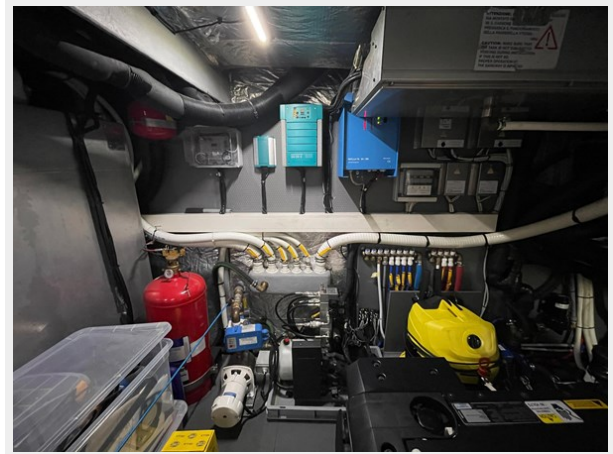
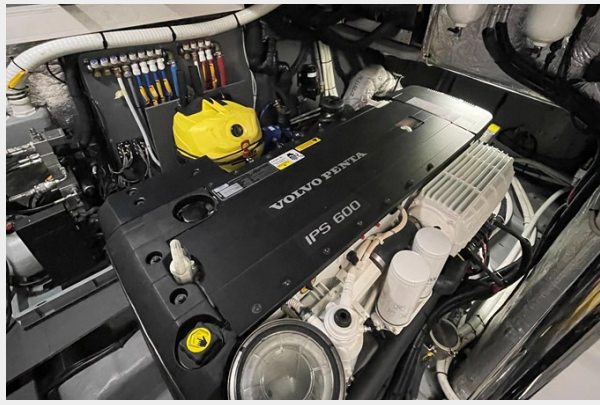














CONTACTS

Andrey Shestakov, leading yacht broker of the sales department of Shestakov Yacht Sales Inc. Shestakov Yacht Sales Inc., the official representative of the Miami/Fort Lauderdale FL headquarters.

Contact details

Email: **andrey@shestakovyachtsales.com**

Web: shestakovyachtsales.com/en/

Telephones

USA: +1(954)274-4435

Office hours

Monday – Saturday: **9:00 - 21:00** EDT

Sunday: **closed**

Address



Harbour Towne Marina, 850 NE 3rd St,
STE 213, Dania, FL 33004