

SUNDAZE — CHAPARRAL



Builder: CHAPARRAL

Year Built: 2011

Model: Boats

Price: PRICE ON APPLICATION

LOA: 20' (6.1mm)

Beam: 8.5

Max Draft: 2' 7" (0.79mm)

Our experienced yacht broker, Andrey Shestakov, will help you choose and buy a yacht that best suits your needs **Sundaze — CHAPARRAL** from our catalogue. Presently, at Shestakov Yacht Sales Inc., we have a wide variety of yachts available on our sale's list. We also work in close contact with all the big yacht manufacturers from all over the world.

If you would like to buy a yacht **Sundaze — CHAPARRAL** or would like help answering any questions concerning purchasing, selling or chartering a yacht, please call **+1(954)274-4435**

TABLE OF CONTENTS

TABLE OF CONTENTS	2
SPECIFICATIONS	5
Overview	5
Basic Information	5
Dimensions	5
Speed, Capacities and Weight	5
Hull and Deck Information	5
Engine Information	5
PHOTOS	6
1 Sundaze 2011 20' Chaparral	6
1_2793372_sundaze	6
3_2793372_sundaze	6
4_2793372_sundaze	6
5_2793372_sundaze	6
6_2793372_sundaze	6
7_2793372_sundaze	7
8_2793372_sundaze	7
9_2793372_sundaze	7
10_2793372_sundaze	7
11_2793372_sundaze	7
13_2793372_sundaze	7
14_2793372_sundaze	8
15_2793372_sundaze	8
17_2793372_sundaze	8
16_2793372_sundaze	8
18_2793372_sundaze	9
20_2793372_sundaze	9
21_2793372_sundaze	9

22_2793372_sundaze	9
24_2793372_sundaze	10
23_2793372_sundaze	10
26_2793372_sundaze	10
25_2793372_sundaze	10
28_2793372_sundaze	11
27_2793372_sundaze	11
29_2793372_sundaze	11
30_2793372_sundaze	11
31_2793372_sundaze	12
32_2793372_sundaze	12
33_2793372_sundaze	12
34_2793372_sundaze	12
35_2793372_sundaze	13
36_2793372_sundaze	13
38_2793372_sundaze	13
37_2793372_sundaze	13
39_2793372_sundaze	14
40_2793372_sundaze	14
41_2793372_sundaze	14
42_2793372_sundaze	14
44_2793372_sundaze	15
43_2793372_sundaze	15
46_2793372_sundaze	15
45_2793372_sundaze	15
47_2793372_sundaze	16
48_2793372_sundaze	16
49_2793372_sundaze	16
50_2793372_sundaze	16

51_2793372_sundaze	17
52_2793372_sundaze	17
53_2793372_sundaze	17
54_2793372_sundaze	17
56_2793372_sundaze	18
55_2793372_sundaze	18
57_2793372_sundaze	18
58_2793372_sundaze	18
59_2793372_sundaze	18
CONTACTS	19
Contact details	19
Telephones	19
Office hours	19
Address	19

SPECIFICATIONS

Overview

"SunDaze," mint condition, Chaparral 186 SSi , Volvo Penta 4.3 GXi, 220 HP inboard, 212 Hours. Trim tabs. Full Leather seating for 9 Passengers, Skii storage, Cover, Isinglass, Boatel kept, New Garmin GPS, Chartplotter, Depth, Speed. Remote control for Stereo and Trim Tabs at Stern / Swim platform with hideaway ladder. A dynamite Bay Vessel.

Basic Information

Category: Boats

Sub Category: Bow Rider

Model Year: 2011

Year Built: 2011

Dimensions

LOA: 20' (6.1mm)

Beam: 8.5

Max Draft: 2' 7" (0.79mm)

Speed, Capacities and Weight

Fuel Capacity: 25 Gal Gallons

Hull and Deck Information

Hull Material: Fiberglass

Engine Information

Engines: 1

Manufacturer: Volvo Penta

Engine Type: Inboard

Fuel Type: Gas/Petrol

PHOTOS

1 Sundaze 2011 20' Chaparral



1_2793372_sundaze



3_2793372_sundaze



4_2793372_sundaze



5_2793372_sundaze



6_2793372_sundaze



7_2793372_sundaze



8_2793372_sundaze



9_2793372_sundaze



10_2793372_sundaze



11_2793372_sundaze



13_2793372_sundaze



14_2793372_sundaze



15_2793372_sundaze



17_2793372_sundaze



16_2793372_sundaze



18_2793372_sundaze



20_2793372_sundaze



21_2793372_sundaze



22_2793372_sundaze



23_2793372_sundaze



24_2793372_sundaze



25_2793372_sundaze



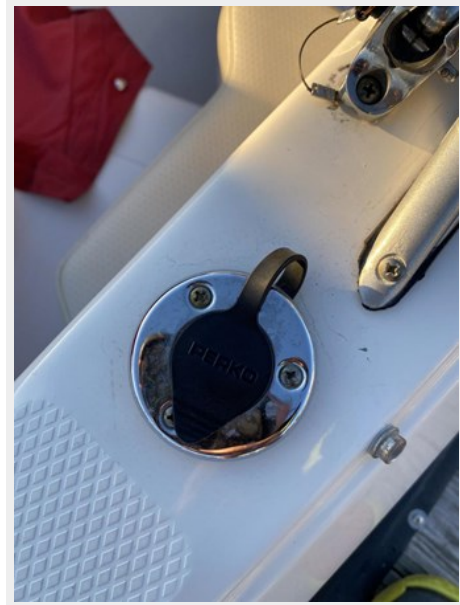
26_2793372_sundaze



27_2793372_sundaze



28_2793372_sundaze



29_2793372_sundaze



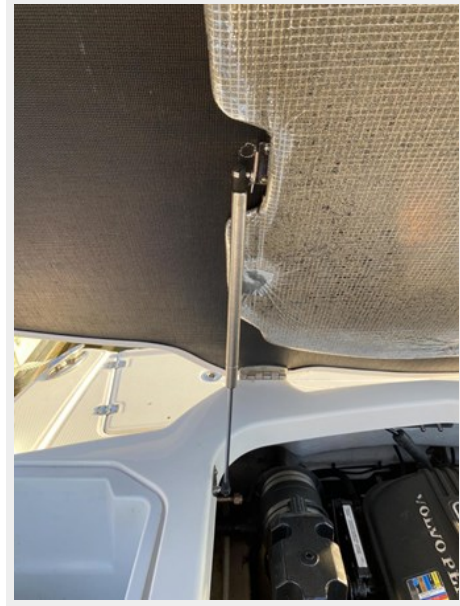
30_2793372_sundaze



31_2793372_sundaze



32_2793372_sundaze



33_2793372_sundaze



34_2793372_sundaze



35_2793372_sundaze

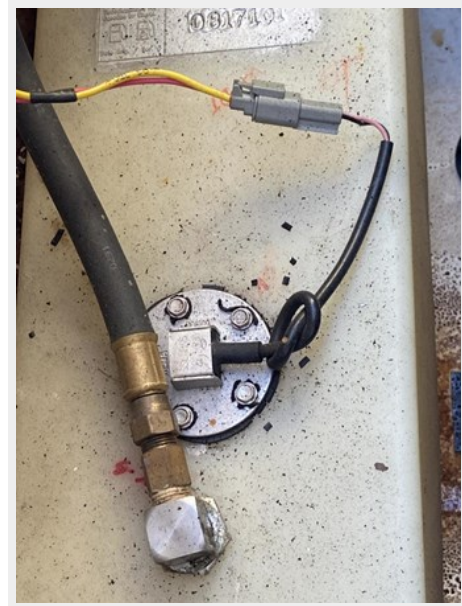


36_2793372_sundaze



38_2793372_sundaze

37_2793372_sundaze



39_2793372_sundaze



40_2793372_sundaze



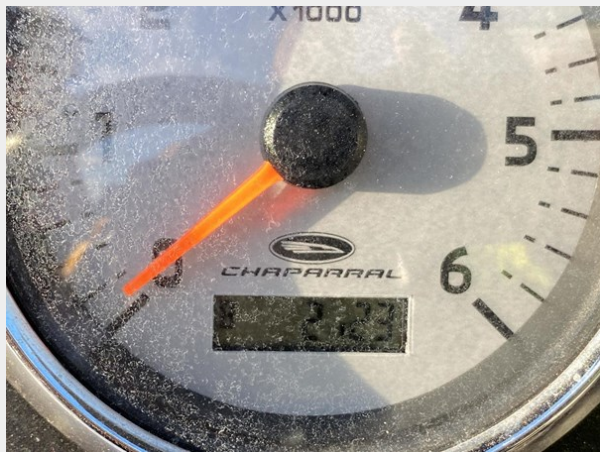
41_2793372_sundaze



42_2793372_sundaze



43_2793372_sundaze

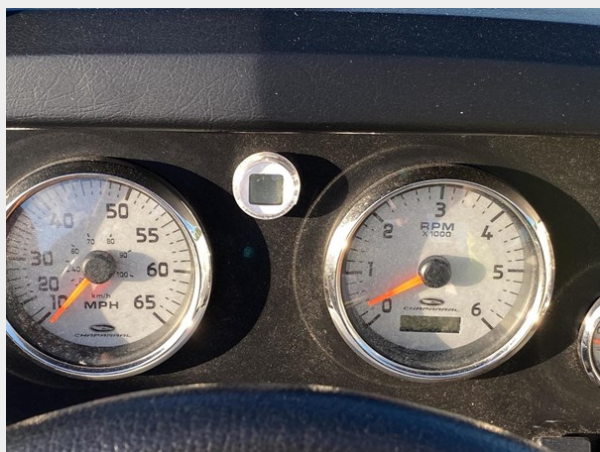


44_2793372_sundaze



46_2793372_sundaze

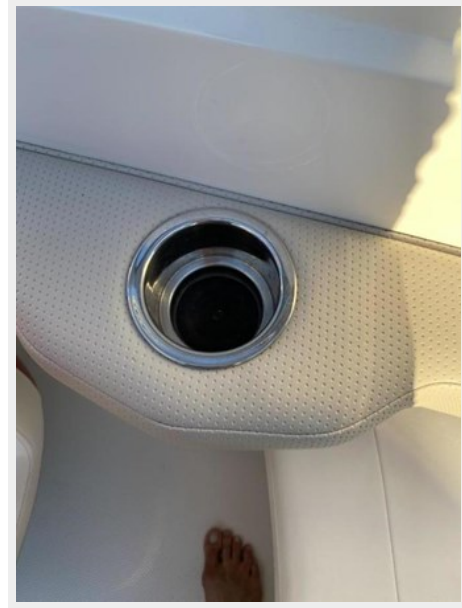
45_2793372_sundaze



47_2793372_sundaze



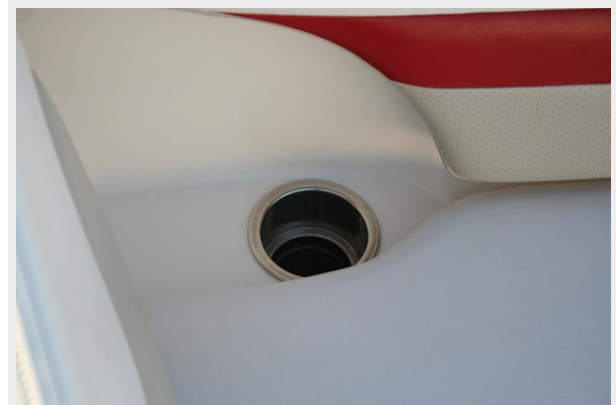
48_2793372_sundaze



49_2793372_sundaze



50_2793372_sundaze



51_2793372_sundaze



52_2793372_sundaze



53_2793372_sundaze



54_2793372_sundaze



55_2793372_sundaze



56_2793372_sundaze



57_2793372_sundaze



58_2793372_sundaze



59_2793372_sundaze



CONTACTS

Andrey Shestakov, leading yacht broker of the sales department of Shestakov Yacht Sales Inc. Shestakov Yacht Sales Inc., the official representative of the Miami/Fort Lauderdale FL headquarters.

Contact details

Email: andrey@shestakovyachtsales.com

Web: shestakovyachtsales.com/en/

Telephones

USA: +1(954)274-4435

Office hours

Monday – Saturday: **9:00 - 21:00** EDT

Sunday: **closed**

Address



Harbour Towne Marina, 850 NE 3rd St,
STE 213, Dania, FL 33004