

270CR — CROWNLINE



Builder: CROWNLINE

Year Built: 2009

Model: Boats

Price: PRICE ON APPLICATION

Location: United States

LOA: 27' (8.23mm)

Beam: 8.5

Max Draft: 3' (0.91mm)

Cruise Speed: 24.33 Knots Kts. (28 MPH)

Max Speed: 36.5 Knots Kts. (42 MPH)

Our experienced yacht broker, Andrey Shestakov, will help you choose and buy a yacht that best suits your needs **270CR — CROWNLINE** from our catalogue. Presently, at Shestakov Yacht Sales Inc., we have a wide variety of yachts available on our sale's list. We also work in close contact with all the big yacht manufacturers from all over the world.

If you would like to buy a yacht **270CR — CROWNLINE** or would like help answering any questions concerning purchasing, selling or chartering a yacht, please call **+1(954)274-4435**

TABLE OF CONTENTS

TABLE OF CONTENTS	2
SPECIFICATIONS	4
Overview	4
Basic Information	4
Dimensions	4
Speed, Capacities and Weight	4
Accommodations	5
Hull and Deck Information	5
Engine Information	5
PHOTOS	6
IMG_7898	6
IMG_7899	6
IMG_7904	6
IMG_7901	6
PA061092	7
PA061094	7
PA061095	7
PA061096	7
PA061097	7
PA061098	7
PA061099	8
PA061100	8
PA061101	8
PA061102	8
PA061103	8
PA061104	8
PA061105	9
PA061106	9

PA061107	9
PA061108	9
PA061109	9
PA061110	9
PA061111	10
PA061112	10
PA061113	10
PA061114	10
PA061115	10
PA061116	10
PA061117	11
PA061118	11
PA061119	11
PA061120	11
PA061121	11
PA061127	11
PA061128	12
PA061129	12
CONTACTS	13
Contact details	13
Telephones	13
Office hours	13
Address	13

SPECIFICATIONS

Overview

2009 Crownline 270 CR in Excellent Condition!

- Only 236 Hours on Mercruiser with Bravo 3 Outdrive
- Equipped with Westerbeke 5kw **Generator** Less than 200 hours
- **AC/Heat**
- Full Galley with Fridge/Stove/Microwave
- Windlass Anchor
- Camper Canvas Enclosure in Very Good Condition
- Cockpit Cover in Good Condition also
- Dry Stack Kept Since New, No Bottom Paint!!!

Meticulous Owner keeps excellent care of this vessel. Flushed after each use by the dry stack facility. Manifolds and Risers have less than 75 hrs. Previously kept in New Jersey until 2020 when it was brought down to NC.

Basic Information

Category: Boats

Model Year: 2009

Year Built: 2009

Country: United States

Dimensions

LOA: 27' (8.23mm)

Beam: 8.5

Max Draft: 3' (0.91mm)

Speed, Capacities and Weight

Cruise Speed: 24.33 Knots Kts. (28 MPH) **Max Speed:** 36.5 Knots Kts. (42 MPH)

Water Capacity: 26 Gallons

Holding Tank: 16 Gal Gallons

Fuel Capacity: 75 Gal Gallons

Accommodations

Total Cabins: 2

Total Berths: 2

Sleeps: 4

Total Heads: 1

Hull and Deck Information

Hull Material: Fiberglass

Hull Configuration: Deep Vee

Hull Color: White/Blue

Engine Information

Engines: 2

Manufacturer: Mercruiser

PHOTOS

IMG_7898



IMG_7899



IMG_7901



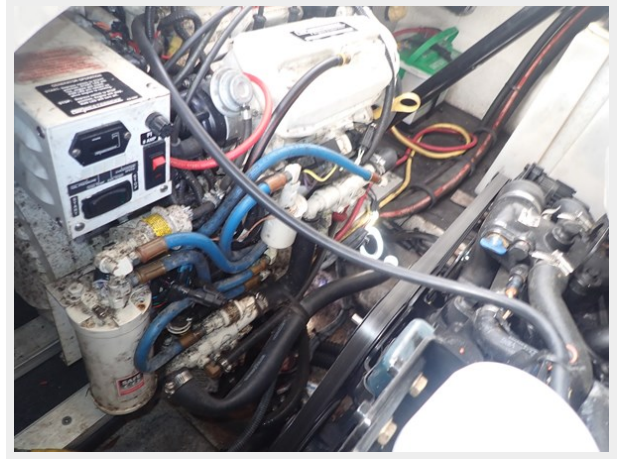
IMG_7904



PA061092



PA061094



PA061095



PA061096



PA061097



PA061098



PA061099



PA061100



PA061101



PA061102



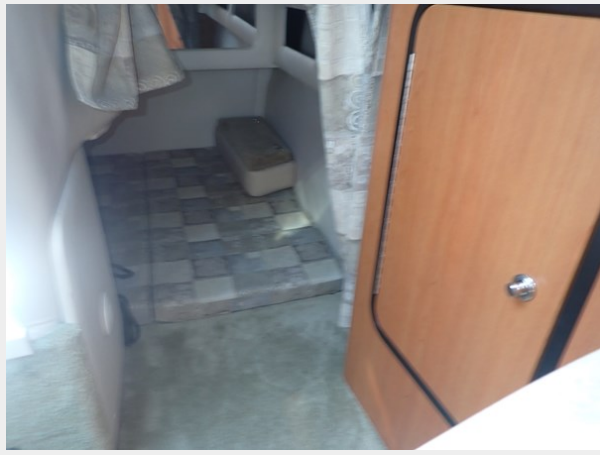
PA061103



PA061104



PA061105



PA061106



PA061107



PA061108



PA061109



PA061110



PA061111



PA061112



PA061113



PA061114



PA061115



PA061116



PA061117



PA061118



PA061119



PA061120



PA061121



PA061127



PA061128



PA061129



CONTACTS

Andrey Shestakov, leading yacht broker of the sales department of Shestakov Yacht Sales Inc. Shestakov Yacht Sales Inc., the official representative of the Miami/Fort Lauderdale FL headquarters.

Contact details

Email: andrey@shestakovyachtsales.com

Web: shestakovyachtsales.com/en/

Telephones

USA: +1(954)274-4435

Office hours

Monday – Saturday: **9:00 - 21:00** EDT

Sunday: **closed**

Address



Harbour Towne Marina, 850 NE 3rd St,
STE 213, Dania, FL 33004