

## UNASOLA — OVERMARINE GROUP



**Builder:** OVERMARINE GROUP

**Year Built:** 2017

**Model:** Motor Yacht

**Price:** PRICE ON APPLICATION

**Location:** Turkey

**LOA:** 141' 5" (43.1mm)

**Beam:** 28.7

**Max Draft:** 7' 11" (2.4mm)

**Cruise Speed:** 11 Knots Kts. (13 MPH)

**Max Speed:** 15.6 Knots Kts. (18 MPH)

Our experienced yacht broker, Andrey Shestakov, will help you choose and buy a yacht that best suits your needs **UNASOLA — OVERMARINE GROUP** from our catalogue. Presently, at Shestakov Yacht Sales Inc., we have a wide variety of yachts available on our sale's list. We also work in close contact with all the big yacht manufacturers from all over the world.

If you would like to buy a yacht **UNASOLA — OVERMARINE GROUP** or would like help answering any questions concerning purchasing, selling or chartering a yacht, please call **+1(954)274-4435**

# TABLE OF CONTENTS

TABLE OF CONTENTS	2
SPECIFICATIONS	4
Overview	4
Basic Information	4
Dimensions	5
Speed, Capacities and Weight	5
Accommodations	5
Hull and Deck Information	5
Engine Information	5
PHOTOS	6
Unasola	6
Unasola	6
Maindeck Aft	6
Unasola	6
Upper deck to sundeck	7
Pool Area Fwd	7
Upper Deck	7
Upper Deck	7
Fly Deck Fwd	7
Fly Deck Fwd	7
Fly Deck Aft	8
Owner Reseption	8
Main salon	8
Main Salon	8
Master Cabin	8
Master Cabin	8
Vip STBD	9
Vip STBD	9

---

Port VIP	9
Port VIP	9
Port Twin	9
Port Twin	9
STBD Twin	10
STBD Twin	10
Owner to Cinema Salon	10
Upper deck Reception	10
Cinema Salon	11
Cinema Salon	11
Galley	11
Laundry Crew Mess	11
Bridge	11
Beach Area	11
Beach Area	12
CONTACTS	13
Contact details	13
Telephones	13
Office hours	13
Address	13

---

# SPECIFICATIONS

---

## Overview

---

The Unasola of which we are the CENTRAL AGENT as BTWO MARINE has gone for a Major price reduction UNASOLA is a motor yacht with a length of 43,10m. The yacht's builder is Overmarine from Italy who delivered superyacht Unasola in 2017. The superyacht has a beam of 8.75m, a draft of 2.4m and a volume of 451 GT.

The Unasola features exterior design by Alberto Mancini Yacht Design, while her interior was penned by Alberto Mancini Yacht Design, with naval architecture by Overmarine Group SPA. Up to 12 guests are accommodated on board the superyacht Unasola, and she also has accommodation for 7 crew members including the captain of Unasola. The Mangusta Oceano 43 yacht Unasola has a steel hull and aluminium superstructure. She is powered by 2 x MTU 12V 2000 M72 (1080KW 1448HP @ 2250 RPM ) engines, which give her a cruising speed of 11.0 kn and a top speed of 15.0 kn. The yacht carries 62,000 liters of fuel on board, and 12,000 liters of water. Stabilizers CMC marine Zero speed and Underway . Range at Economical cruising speed UP to 4500nM . She has been passed 5Years ABS survey and She is ready to go to new season .

She is lying in Göcek, Turkey and is available for viewings.

**Key features:** - An award-winning Tri-deck displacement model- At 450 GT, she is a high-volume vessel with wide-range cruising capabilities of up to 4,500 nautical miles- Infinity Pool- Dedicated beach club- Ample outdoor areas for entertaining- Aggressively sleek profile- Forward tender garage- Offers comfort and luxury on the open seas

---

## Basic Information

---

**Category:** Motor Yacht

**Sub Category:** Motor Yacht

**Model Year:** 2017

**Year Built:** 2017

**Country:** Turkey

---

## Dimensions

---

**LOA:** 141' 5" (43.1mm)

**Beam:** 28.7

**Max Draft:** 7' 11" (2.4mm)

---

## Speed, Capacities and Weight

---

**Cruise Speed:** 11 Knots Kts. (13 MPH)

**Max Speed:** 15.6 Knots Kts. (18 MPH)

**Gross Tonnage:** 451 Pounds

**Water Capacity:** 12000 Gallons

**Fuel Capacity:** 16907.01 Gal Gallons

**Fuel Consumption:** 26.42 Gal Gallons

---

## Accommodations

---

**Total Cabins:** 5

---

## Hull and Deck Information

---

**Hull Material:** Steel

**Deck Material:** Aluminum

**Hull Configuration:** Full Displacement

**Hull Color:** GREY&BLACK&WHITE

**Hull Designer:** OVERMARINE GROUP

**Exterior Designer:** ALBERTO MANCHINI

**Interior Designer:** ALBERTO MANCHINI

---

## Engine Information

---

**Engines:** 2

**Manufacturer:** MTU

**Engine Type:** Inboard

# PHOTOS

**Unasola**



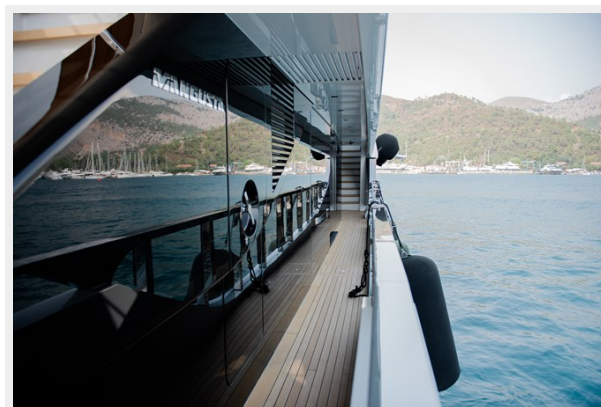
**Unasola**



**Maindeck Aft**



**Unasola**

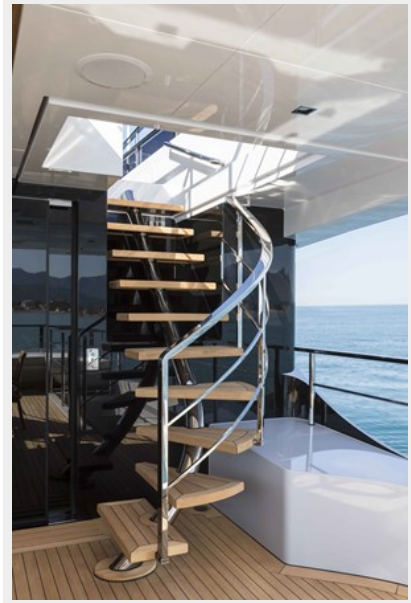




**Pool Area Fwd**



**Upper deck to sundeck**



**Upper Deck**



**Upper Deck**



**Fly Deck Fwd**



**Fly Deck Fwd**





**Fly Deck Aft**



**Owner Reception**



**Main salon**



**Main Salon**



**Master Cabin**



**Master Cabin**





Vip STBD



Vip STBD



Port VIP



Port VIP



Port Twin



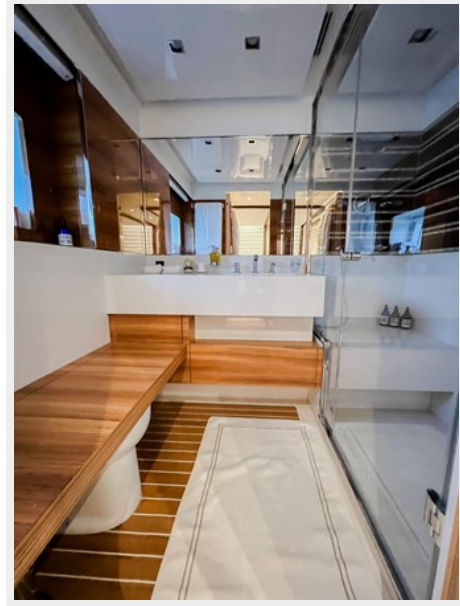
Port Twin



**STBD Twin**



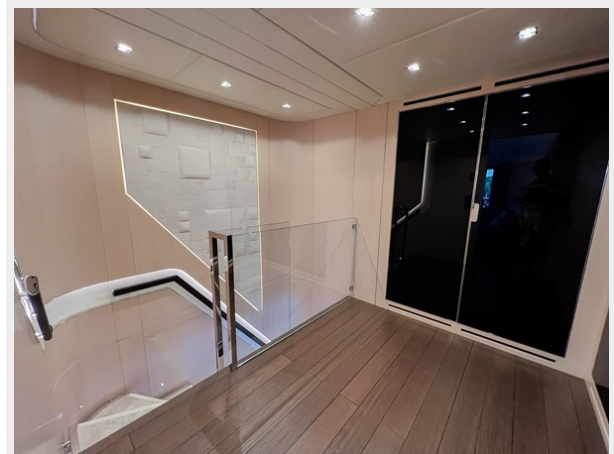
**STBD Twin**



**Owner to Cinema Salon**



**Upper deck Reception**





**Cinema Salon**



**Cinema Salon**



**Galley**



**Laundry Crew Mess**



**Bridge**



**Beach Area**



## Beach Area





# CONTACTS

---

Andrey Shestakov, leading yacht broker of the sales department of Shestakov Yacht Sales Inc. Shestakov Yacht Sales Inc., the official representative of the Miami/Fort Lauderdale FL headquarters.

## Contact details

---

Email: [andrey@shestakovyachtsales.com](mailto:andrey@shestakovyachtsales.com)

Web: [shestakovyachtsales.com/en/](http://shestakovyachtsales.com/en/)

## Telephones

---

USA: +1(954)274-4435

## Office hours

---

Monday – Saturday: **9:00 - 21:00** EDT

Sunday: **closed**

## Address

---



Harbour Towne Marina, 850 NE 3rd St,  
STE 213, Dania, FL 33004