

TIDDLY BOO — HATTERAS



Builder: HATTERAS

LOA: 40' (12.19mm)

Year Built: 1992

Beam: 13.58

Model: Motor Yacht

Max Draft: 4' 9" (1.45mm)

Price: PRICE ON APPLICATION

Location: United States

Our experienced yacht broker, Andrey Shestakov, will help you choose and buy a yacht that best suits your needs **Tiddly Boo — HATTERAS** from **our catalogue**. Presently, at **Shestakov Yacht Sales Inc.**, we have a wide variety of yachts available on **our sale's list**. We also work in close contact with all the big **yacht manufacturers** from all over the world.

If you would like to buy a yacht **Tiddly Boo — HATTERAS** or would like help answering any questions concerning purchasing, selling or chartering a yacht, please call **+1(954)274-4435**

TABLE OF CONTENTS

TABLE OF CONTENTS	2
SPECIFICATIONS	5
Overview	5
Basic Information	6
Dimensions	6
Speed, Capacities and Weight	6
Accommodations	7
Hull and Deck Information	7
Engine Information	7
PHOTOS	8
8530553_20221010094653950_1_XLARGE	8
8530553_20221017124150378_1_XLARGE	8
8530553_20221017124154744_1_XLARGE	8
8530553_20221017124158854_1_XLARGE	8
8530553_20221017124201582_1_XLARGE	8
8530553_20221017124206652_1_XLARGE	8
8530553_20221017124211690_1_XLARGE	9
8530553_20221017124214053_1_XLARGE	9
8530553_20221017124217774_1_XLARGE	9
8530553_20221017124220849_1_XLARGE	9
8530553_20221017124223891_1_XLARGE	9
8530553_20221017124225970_1_XLARGE	9
8530553_20221017124233055_1_XLARGE	10
8530553_20221017124230011_1_XLARGE	10
8530553_20221017124237210_1_XLARGE	10
8530553_20221017124242073_1_XLARGE	10
8530553_20221017124244186_1_XLARGE	10
8530553_20221017124253265_1_XLARGE	10

8530553_20221017124257341_1_XLARGE	11
8530553_20221017124250366_1_XLARGE	11
8530553_20221017124300386_1_XLARGE	11
8530553_20221017124246343_1_XLARGE	11
8530553_20221017124240075_1_XLARGE	11
8530553_20221017124304573_1_XLARGE	11
8530553_20221017124307508_1_XLARGE	12
8530553_20221017124318521_1_XLARGE	12
8530553_20221017124325750_1_XLARGE	12
8530553_20221017124314592_1_XLARGE	12
8530553_20221017124321535_1_XLARGE	12
8530553_20221017124332639_1_XLARGE	12
8530553_20221017124359034_1_XLARGE	13
8530553_20221017124335674_1_XLARGE	13
8530553_20221017124354937_1_XLARGE	13
8530553_20221017124348725_1_XLARGE	13
8530553_20221017124351849_1_XLARGE	14
8530553_20221017124345794_1_XLARGE	14
8530553_20221017124341727_1_XLARGE	14
8530553_20221017124339660_1_XLARGE	14
8530553_20221017124401958_1_XLARGE	14
8530553_20221017124311458_1_XLARGE	14
8530553_20221017124406060_1_XLARGE	15
8530553_20221017124410185_1_XLARGE	15
8530553_20221017124413129_1_XLARGE	15
8530553_20221017124417179_1_XLARGE	15
8530553_20221017124420280_1_XLARGE	15
8530553_20221017124431334_1_XLARGE	15
8530553_20221017124424287_1_XLARGE	16

8530553_20221017124427193_1_XLARGE	16
8530553_20221017124434294_1_XLARGE	16
8530553_20221017124438272_1_XLARGE	16
8530553_20221017124441304_1_XLARGE	16
8530553_20221017124444573_1_XLARGE	16
8530553_20221017124448484_1_XLARGE	17
8530553_20221017124451479_1_XLARGE	17
8530553_20221017124516792_1_XLARGE	17
8530553_20221017124519857_1_XLARGE	17
8530553_20221017124509806_1_XLARGE	17
8530553_20221017124505772_1_XLARGE	17
8530553_20221017124530999_1_XLARGE	18
8530553_20221017124502841_1_XLARGE	18
8530553_20221017124455432_1_XLARGE	18
8530553_20221017124534106_1_XLARGE	18
8530553_20221017124552285_1_XLARGE	18
8530553_20221017124545152_1_XLARGE	18
8530553_20221017124548230_1_XLARGE	19
8530553_20221017124538101_1_XLARGE	19
8530553_20221017124458539_1_XLARGE	19
8530553_20221017124527006_1_XLARGE	19
8530553_20221017124512863_1_XLARGE	19
8530553_20221017124523942_1_XLARGE	19
8530553_20221010094655070_1_XLARGE	20
CONTACTS	21
Contact details	21
Telephones	21
Office hours	21
Address	21

SPECIFICATIONS

Overview

1992 Hatteras 40 double cabin motor yacht. The perfect "pocket" Hatteras to do the Great Loop, take you to the Bahamas or service as a live aboard boat.

Tiddly Boo represents a great value in a legendary Hatteras Motor Yacht that can easily be handled by a couple. You will be pleasantly surprised by her open, bright and spacious salon and lower galley area. The salon also has a port side bar area with cabinets to hold bottles, glassware and an ice maker!

Moving aft there is a combination washer/dryer in the hallway to the aft master cabin that also has a large linen/storage area.

The aft cabin boasts a queen size center island bed with ample storage for extended voyages, as well as a port side private head with separate shower and a VacuFlush head. There is a large cedar lined hanging locker/closet on the starboard side.

Moving forward from the salon and down 3 steps you will find the galley area. There is a new Whirlpool microwave/convection oven, a large refrigerator as well as a 2 burner electric cook top. The large stainless sink and expansive counter areas make meal prep or entertaining a pleasure.

Opposite the galley you will find the second head serving as the day head with private access to the forward cabin. there is also a separate enclosed shower just aft of the VacuFlush toilet.

Moving forward you will find the guest cabin which has a large hatch to allow for a nice breeze when weather conditions permit. There are two large bunks located on the port side of the cabin and storage on the starboard side.

Moving up 3 steps from the salon and through the door will take you to the hard top covered aft deck area. There are two love seats forming a nice conversation area as well as a wet bar at the forward portion.

Moving forward and up 3 steps from the aft deck takes you to the helm area where you will find a complete compliment of controls and seating for 7 or 8 people. This area is protected by a newer canvas Bimini and removable side/forward curtains to keep the weather out in less than perfect conditions. Here you will also find a covered chart storage area, the Raymarine 8" Hybrid chart plotter as well as the autopilot controls and the Maxwell windlass control/chain counter. Communication is via Standard Horizon VHF.

Ships systems include a 40" Samsung UHD TV in the main salon with a Marantz stereo system, a 24" Vizio TV in the guest stateroom, two newer 16,000 BTU reverse AC units providing both heat or air conditioning as needed, shore power is via a single 50 AMP 240 volt cord or a single 30 AMP 120 volt cord, when you are away from the dock, the Onan 8KW generator with 604 hours on it will keep the lights on and the ice frozen! The DC system is 12 volts provided by two 8D batteries that were new in 12/2020. Hot water comes from a newer KUUMA 11 gallon hot water heater. Tiddly Boo is also powered by twin Caterpillar 3208TA

diesel engines rated at 425 HP.

She has been well maintained and in January 2022 had a new Maxwell 1000 12 volt windlass, 200 feet of 5/16 G4 galvanized anchor chain secured to a 25 KG stainless steel Delta style anchor with a Mantus S2 swivel as well as a remote windlass control/chain counter located at the helm station. There is also a secondary Fortress anchor.

On 08/2021 she had:

- Fresh Petit Trinidad bottom paint.
- Starboard main heat exchanger and after cooler was removed, cleaned, serviced and filled with new coolant.
- Shafts had new PSS dripless seals replaced as well as water cooler lines.
- Both rudders were removed, old packing taken out and put together with new packing.
- Fuel tanks were cleaned and fuel polished.
- Generator raw water hoses were replaced.
- Replace all main engine raw water hoses and clamps as needed.
- New flares added (located in fly bridge area).
- New Raymarine autopilot added.

Basic Information

Category: Motor Yacht

Sub Category: Aft Cabin

Model Year: 1992

Year Built: 1992

Country: United States

Dimensions

LOA: 40' (12.19mm)

Beam: 13.58

Max Draft: 4' 9" (1.45mm)

Speed, Capacities and Weight

Water Capacity: 110 Gallons

Holding Tank: 40 Gal Gallons

Fuel Capacity: 350 Gal Gallons

Accommodations

Total Cabins: 2

Hull and Deck Information

Hull Material: Fiberglass

Engine Information

Engines: 2

Manufacturer: Caterpillar

Engine Type: Inboard

Fuel Type: Diesel

PHOTOS

8530553_20221010094653950_1_XLARGE



8530553_20221017124150378_1_XLARGE



8530553_20221017124154744_1_XLARGE



8530553_20221017124158854_1_XLARGE



8530553_20221017124201582_1_XLARGE



8530553_20221017124206652_1_XLARGE



8530553_20221017124211690_1_XLARGE 8530553_20221017124214053_1_XLARGE



8530553_20221017124217774_1_XLARGE 8530553_20221017124220849_1_XLARGE



8530553_20221017124223891_1_XLARGE 8530553_20221017124225970_1_XLARGE



8530553_20221017124233055_1_XLARGE 8530553_20221017124230011_1_XLARGE



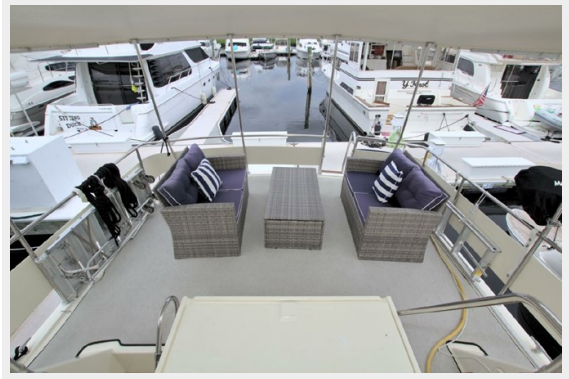
8530553_20221017124237210_1_XLARGE 8530553_20221017124242073_1_XLARGE



8530553_20221017124244186_1_XLARGE 8530553_20221017124253265_1_XLARGE



8530553_20221017124257341_1_XLARGE 8530553_20221017124250366_1_XLARGE



8530553_20221017124300386_1_XLARGE 8530553_20221017124246343_1_XLARGE



8530553_20221017124240075_1_XLARGE 8530553_20221017124304573_1_XLARGE



8530553_20221017124307508_1_XLARGE 8530553_20221017124318521_1_XLARGE



8530553_20221017124325750_1_XLARGE 8530553_20221017124314592_1_XLARGE



8530553_20221017124321535_1_XLARGE 8530553_20221017124332639_1_XLARGE



8530553_20221017124359034_1_XLARGE

8530553_20221017124335674_1_XLARGE



8530553_20221017124354937_1_XLARGE



8530553_20221017124348725_1_XLARGE



8530553_20221017124351849_1_XLARGE 8530553_20221017124345794_1_XLARGE



8530553_20221017124341727_1_XLARGE 8530553_20221017124339660_1_XLARGE



8530553_20221017124401958_1_XLARGE 8530553_20221017124311458_1_XLARGE



8530553_20221017124406060_1_XLARGE



8530553_20221017124410185_1_XLARGE



8530553_20221017124413129_1_XLARGE 8530553_20221017124417179_1_XLARGE



8530553_20221017124420280_1_XLARGE 8530553_20221017124431334_1_XLARGE



8530553_20221017124424287_1_XLARGE 8530553_20221017124427193_1_XLARGE



8530553_20221017124434294_1_XLARGE 8530553_20221017124438272_1_XLARGE



8530553_20221017124441304_1_XLARGE 8530553_20221017124444573_1_XLARGE



8530553_20221017124448484_1_XLARGE 8530553_20221017124451479_1_XLARGE



8530553_20221017124516792_1_XLARGE 8530553_20221017124519857_1_XLARGE



8530553_20221017124509806_1_XLARGE 8530553_20221017124505772_1_XLARGE



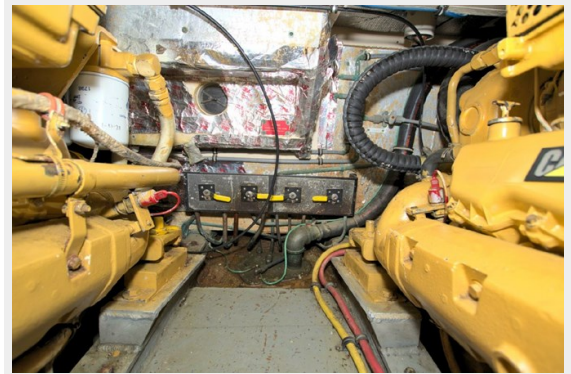
8530553_20221017124530999_1_XLARGE 8530553_20221017124502841_1_XLARGE



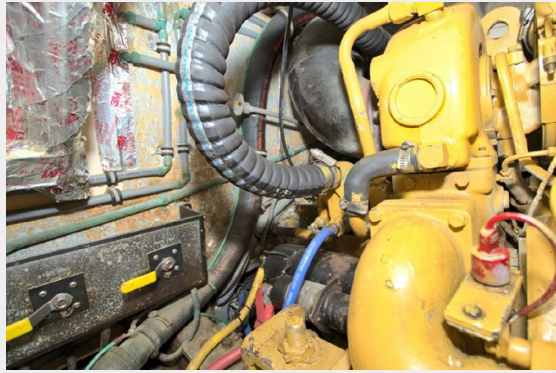
8530553_20221017124455432_1_XLARGE 8530553_20221017124534106_1_XLARGE



8530553_20221017124552285_1_XLARGE 8530553_20221017124545152_1_XLARGE



8530553_20221017124548230_1_XLARGE 8530553_20221017124538101_1_XLARGE



8530553_20221017124458539_1_XLARGE 8530553_20221017124527006_1_XLARGE



8530553_20221017124512863_1_XLARGE 8530553_20221017124523942_1_XLARGE



8530553_20221010094655070_1_XLARGE



CONTACTS

Andrey Shestakov, leading yacht broker of the sales department of Shestakov Yacht Sales Inc. Shestakov Yacht Sales Inc., the official representative of the Miami/Fort Lauderdale FL headquarters.

Contact details

Email: **andrey@shestakovyachtsales.com**

Web: shestakovyachtsales.com/en/

Telephones

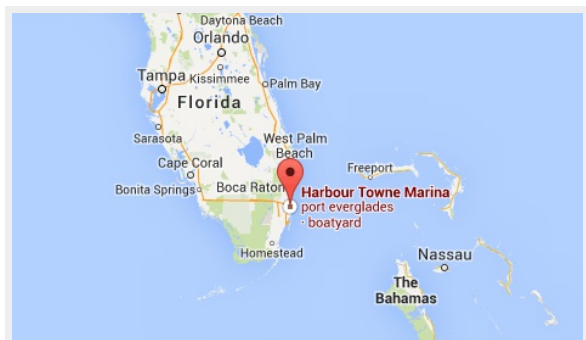
USA: **+1(954)274-4435**

Office hours

Monday – Saturday: **9:00 - 21:00** EDT

Sunday: **closed**

Address



Harbour Towne Marina, 850 NE 3rd St, STE 213, Dania, FL 33004