

LONELY GIRL — CATALINA



Builder: CATALINA

Year Built: 2000

Model: Cruising Sailboat

Price: PRICE ON APPLICATION

Location: United States

LOA: 43' 2" (13.16mm)

Beam: 13.83

Min Draft: 4' 6" (1.37mm)

Max Draft: 5' (1.52mm)

Cruise Speed: 6 Knots Kts. (7 MPH)

Max Speed: 8 Knots Kts. (9 MPH)

Our experienced yacht broker, Andrey Shestakov, will help you choose and buy a yacht that best suits your needs **Lonely Girl — CATALINA** from our catalogue. Presently, at Shestakov Yacht Sales Inc., we have a wide variety of yachts available on our sale's list. We also work in close contact with all the big yacht manufacturers from all over the world.

If you would like to buy a yacht **Lonely Girl — CATALINA** or would like help answering any questions concerning purchasing, selling or chartering a yacht, please call **+1(954)274-4435**

TABLE OF CONTENTS

TABLE OF CONTENTS	2
SPECIFICATIONS	5
Overview	5
Basic Information	5
Dimensions	5
Speed, Capacities and Weight	5
Accommodations	6
Hull and Deck Information	6
Engine Information	6
PHOTOS	7
Starboard bow	7
Starboard Midship	7
Starboard Midship	7
Asymmetric Spinnaker	7
Home Dock	8
Home Dock	8
Anchor Pulpit	8
Port Bow	8
Anchor Locker	9
Netted Lifelines and Bow Rail	9
Foredeck	9
Bow	9
Main Deck and Mast	10
Main Cabin and Hatches	10
Port Side	10
Starboard Side	10
Sprayhood Dodger	10
Starboard Aft	10

Port Aft Cockpit Enclosure	11
Cockpit Table	11
Cockpit Table Aft	11
Dinghy and Yamaha Engine	11
Helm	11
Helm	11
Companionway	12
Companionway	12
Companionway	12
Companionway	12
Salon	13
Salon	13
Salon Dinette	13
Nav Station	13
Nav Station	14
Ships Main Breaker Panel	14
Updated Electric Wiring	14
Climate Control	14
Weather Instruments	15
Forward Pullman Double Bert	15
Forward Cabin	15
Forward Cabin	15
Forward Cabin	15
Forward Cabin	15
Forward Head	16
Forward Head	16
Forward Head	16
Forward Head	16
Forward Head	17

Aft Cabin Double Berth	17
Aft Head	17
Aft Cabin Storage	17
Aft Head	18
Aft Head	18
Galley	18
Galley	18
Galley	18
Galley	18
Microwave	19
Oven	19
Deep Freezer	19
Refrigerator and Galley Storage	19
Galley Storage and Machinery Access	19
Galley Storage and Machinery Access	19
Engine Compartment and Primary Fuel Filters	20
Engine Compartment	20
Yanmar 4JH3E 54hp Diesel Engine	20
Yanmar 4JH3E 54hp Diesel Engine	20
Yanmar 4JH3E 54hp Diesel Engine and Upgraded Alternator	21
Upgraded Alternator	21
Yacht Certification	21
Vessel Specific Schematics and Manual	21
Vessel Specific Schematics and Manual	22
CONTACTS	23
Contact details	23
Telephones	23
Office hours	23
Address	23

SPECIFICATIONS

Overview

The Catalina 42 has the well-earned international reputation as a leader in her class. Leading with hull design, spacious interiors and cruising performance, it is oft-chosen by sailors worldwide. The Catalina 42 MkII is the logical result of America's most experienced sailboat builder and its pursuit to improve upon excellence.

Basic Information

Category: Cruising Sailboat

Model Year: 2000

Year Built: 2000

Country: United States

Dimensions

LOA: 43' 2" (13.16mm)

LWL: 36' (10.97mm)

LOD: 41' 10" (12.75mm)

Beam: 13.83

Min Draft: 4' 6" (1.37mm)

Max Draft: 5' (1.52mm)

Speed, Capacities and Weight

Cruise Speed: 6 Knots Kts. (7 MPH)

Cruise Speed Range: 400

Max Speed: 8 Knots Kts. (9 MPH)

Max Speed Range: 350 Kts.

Gross Tonnage: 11 Pounds

Water Capacity: 111 Gallons

Holding Tank: 52 Gal Gallons

Fuel Capacity: 42 Gal Gallons

Fuel Consumption: 1.25 Gal Gallons

Accommodations

Total Cabins: 2

Total Berths: 2

Sleeps: 6

Total Heads: 2

Hull and Deck Information

Hull Material: Fiberglass

Deck Material: Composite Fiberglass

Hull Configuration: Fin & Spade

Hull Color: White

Hull Designer: Sparkman & Stephens

Exterior Designer: Gerry Douglas

Interior Designer: Gerry Douglas

Engine Information

Engines: 1

Manufacturer: Yanmar

Engine Type: Inboard

Fuel Type: Diesel

PHOTOS

Starboard bow



Starboard Midship



Starboard Midship



Asymmetric Spinnaker



Home Dock



Home Dock



Anchor Pulpit



Port Bow



Netted Lifelines and Bow Rail



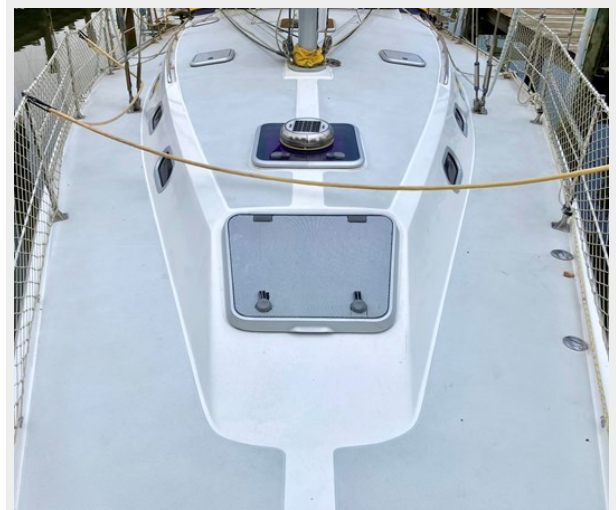
Anchor Locker



Bow



Foredeck



Main Cabin and Hatches



Main Deck and Mast



Port Side



Starboard Side



Sprayhood Dodger



Starboard Aft



Port Aft Cockpit Enclosure



Cockpit Table



Cockpit Table Aft



Dinghy and Yamaha Engine



Helm



Helm



Companionway

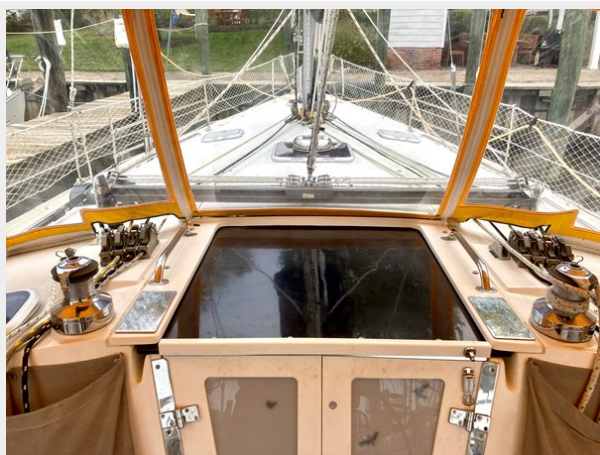


Companionway



Companionway

Companionway



Salon



Salon



Salon Dinette



Nav Station



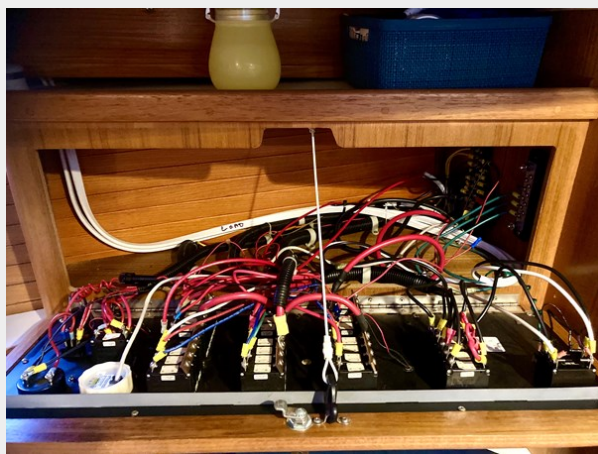
Nav Station



Ships Main Breaker Panel



Updated Electric Wiring



Climate Control



Weather Instruments



Forward Pullman Double Bert



Forward Cabin



Forward Cabin



Forward Cabin



Forward Cabin



Forward Head



Forward Head



Forward Head



Forward Head



Forward Head



Aft Cabin Double Berth



Aft Head



Aft Cabin Storage



Aft Head



Aft Head



Galley



Galley



Galley



Galley



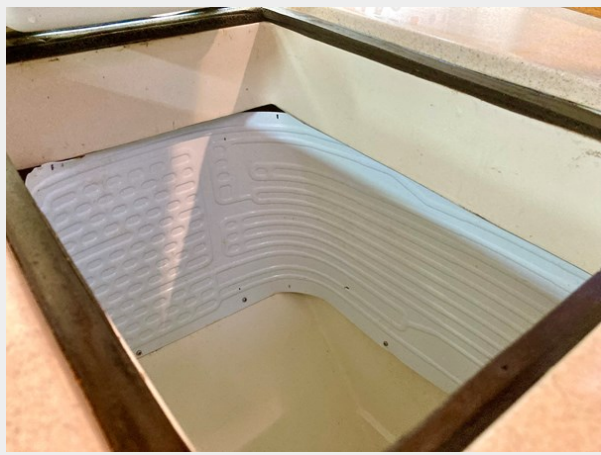
Microwave



Oven



Deep Freezer



Refrigerator and Galley Storage



Galley Storage and Machinery Access



Galley Storage and Machinery Access



Engine Compartment and Primary Fuel Filters



Engine Compartment



Yanmar 4JH3E 54hp Diesel Engine



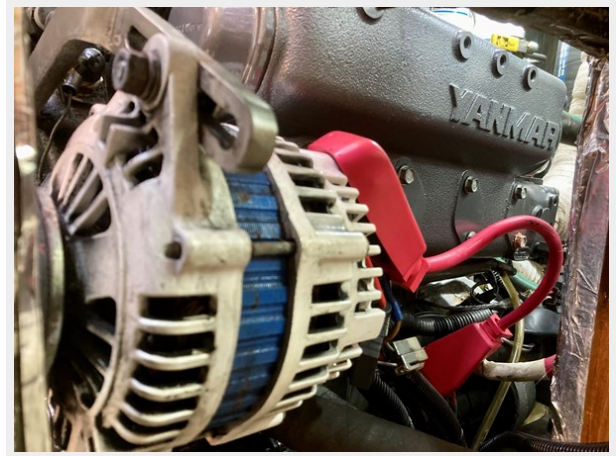
Yanmar 4JH3E 54hp Diesel Engine



Yanmar 4JH3E 54hp Diesel Engine and Upgraded Alternator



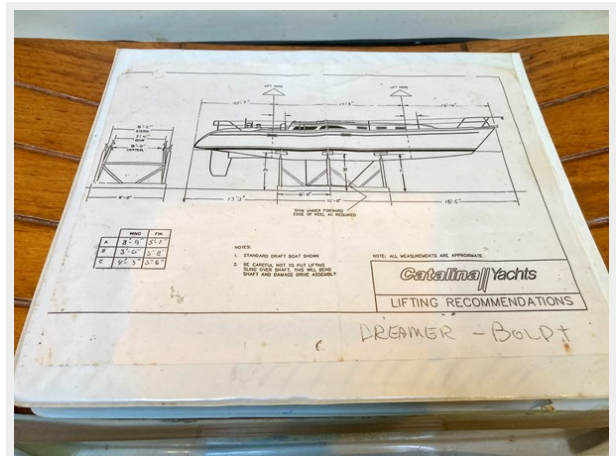
Upgraded Alternator



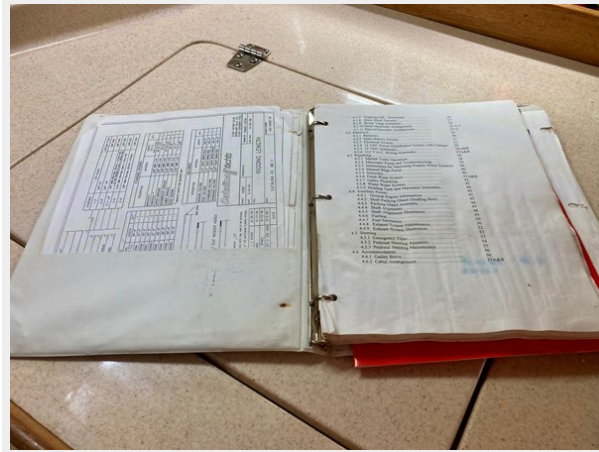
Yacht Certification



Vessel Specific Schematics and Manual



Vessel Specific Schematics and Manual



CONTACTS

Andrey Shestakov, leading yacht broker of the sales department of Shestakov Yacht Sales Inc. Shestakov Yacht Sales Inc., the official representative of the Miami/Fort Lauderdale FL headquarters.

Contact details

Email: andrey@shestakovyachtsales.com

Web: shestakovyachtsales.com/en/

Telephones

USA: +1(954)274-4435

Office hours

Monday – Saturday: **9:00 - 21:00** EDT

Sunday: **closed**

Address



Harbour Towne Marina, 850 NE 3rd St,
STE 213, Dania, FL 33004