

TRANSACTION — BERTRAM



Builder: BERTRAM

Year Built: 2001

Model: Sport Fisherman

Price: €290,000 EUR

Location: Italy

LOA: 48' 3" (14.7mm)

Beam: 14.89

Max Draft: 4' 4" (1.32mm)

Cruise Speed: 26 Knots Kts. (30 MPH)

Max Speed: 31 Knots Kts. (36 MPH)

Our experienced yacht broker, Andrey Shestakov, will help you choose and buy a yacht that best suits your needs **TRANSACTION — BERTRAM** from our catalogue. Presently, at Shestakov Yacht Sales Inc., we have a wide variety of yachts available on our sale's list. We also work in close contact with all the big yacht manufacturers from all over the world.

If you would like to buy a yacht **TRANSACTION — BERTRAM** or would like help answering any questions concerning purchasing, selling or chartering a yacht, please call **+1(954)274-4435**

TABLE OF CONTENTS

TABLE OF CONTENTS	2
SPECIFICATIONS	3
Overview	3
Basic Information	3
Dimensions	4
Speed, Capacities and Weight	4
Accommodations	4
Hull and Deck Information	4
Engine Information	4
PHOTOS	5
CONTACTS	11
Contact details	11
Telephones	11
Office hours	11
Address	11

SPECIFICATIONS

Overview

The Bertram 450 Convertible is a sportfisherman that combines a deep-V hull with the needs of tournament anglers. The interior of the 450 Convertible can be compared to much larger boats. It was developed to satisfy the sportfisherman, yet deliver the comfort of a cruising boat.

The salon - galley - dinette layout is spacious and practical. There is room to relax or entertain in comfort with a full complement of standard features and amenities. The second cabin is unique, with side by side twin berths instead of the more common over and under berths. Unusual in a boat of this size is the elevated cocktail area forward of the dinette, and the possibility of a washer & dryer stack in the companionway. On the practical side, much attention was paid to the organization and layout of the engine room. The fuel tank was put amidships to minimize the effect of fuel load on trim. It also acts as an effective insulator of noise and engine room heat for the forward cabin area. Careful layout of major components makes maintenance very easy.

Trade-in with smaller fisherman are considered.

RAYMARINE tridataNew Bow Thruster batteries in 2022BENNET FlapsElectric Throttles2x Equalisation batteries Vanner Volt Master 60amp LED interior lightsCentralized vacuumSink in the cockpitPredisposition for the washer and dryer

WORKS 2024:- Total polishing of hull and superstructure - New interior carpet- Total engine room painting- New starboard side leather sofa- Recovery of living room upholstery

Last Updates:- New bimini top in the flybridge- New sunshade and upholstery in the cockpit

Basic Information

Category: Sport Fisherman

Model Year: 2001

Year Built: 2001

Country: Italy

Dimensions

LOA: 48' 3" (14.7mm)

Beam: 14.89

Max Draft: 4' 4" (1.32mm)

Speed, Capacities and Weight

Cruise Speed: 26 Knots Kts. (30 MPH)

Cruise Speed Range: 260

Max Speed: 31 Knots Kts. (36 MPH)

Water Capacity: 600 Gallons

Holding Tank: 39.63 Gal Gallons

Fuel Capacity: 634.01 Gal Gallons

Accommodations

Total Cabins: 2

Sleeps: 4

Hull and Deck Information

Hull Material: Fiberglass

Engine Information

Engines: 2

Manufacturer: Caterpillar

Engine Type: Inboard

Fuel Type: Diesel

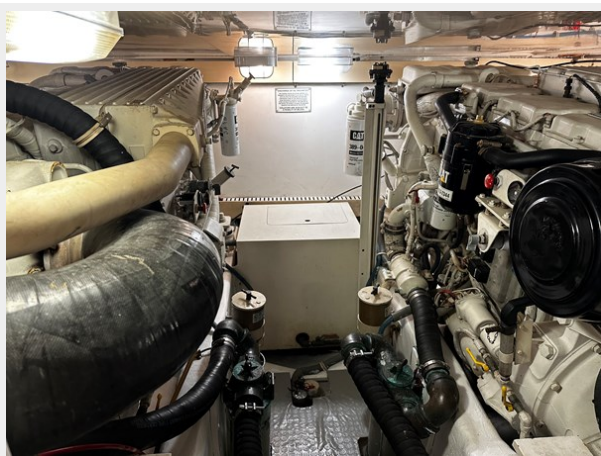
PHOTOS













CONTACTS

Andrey Shestakov, leading yacht broker of the sales department of Shestakov Yacht Sales Inc. Shestakov Yacht Sales Inc., the official representative of the Miami/Fort Lauderdale FL headquarters.

Contact details

Email: andrey@shestakovyachtsales.com

Web: shestakovyachtsales.com/en/

Telephones

USA: +1(954)274-4435

Office hours

Monday – Saturday: **9:00 - 21:00** EDT

Sunday: **closed**

Address



Harbour Towne Marina, 850 NE 3rd St,
STE 213, Dania, FL 33004