

BLUE HAWKE — LITTLE HARBOR



Builder: LITTLE HARBOR

Year Built: 1990

Model: Cruising Sailboat

Price: PRICE ON APPLICATION

Location: United States

LOA: 42' 8" (13mm)

Beam: 13.08

Min Draft: 4' 7" (1.4mm)

Max Draft: 10' (3.05mm)

Cruise Speed: 6.5 Knots Kts. (7 MPH)

Max Speed: 7.5 Knots Kts. (9 MPH)

Our experienced yacht broker, Andrey Shestakov, will help you choose and buy a yacht that best suits your needs **BLUE HAWKE — LITTLE HARBOR** from our catalogue. Presently, at Shestakov Yacht Sales Inc., we have a wide variety of yachts available on our sale's list. We also work in close contact with all the big yacht manufacturers from all over the world.

If you would like to buy a yacht **BLUE HAWKE — LITTLE HARBOR** or would like help answering any questions concerning purchasing, selling or chartering a yacht, please call **+1(954)274-4435**

TABLE OF CONTENTS

TABLE OF CONTENTS	2
SPECIFICATIONS	4
Overview	4
Basic Information	4
Dimensions	4
Speed, Capacities and Weight	4
Accommodations	4
Hull and Deck Information	5
Engine Information	5
PHOTOS	6
Bluewater Runner	6
Under Sail	6
Bow	6
Interior	6
Owner's Cabin, V-Berth	7
Head	7
Nav Station	7
Galley, Aft	7
Galley, from Above	7
Windlass and Foredeck	7
Looking Fwd.	8
Cockpit, Port	8
Cockpit, Stbd.	8
Winches	8
Push-button Controls	8
Push-button Controls	8
Engine	9
Engine and Generator	9

Generator	9
Profile, Moored	9
CONTACTS	10
Contact details	10
Telephones	10
Office hours	10
Address	10

SPECIFICATIONS

Overview

BLUE HAWKE was the sixth and last of the acclaimed Ted Hood designed Little Harbor 42's to be built. These boats are unique in so many ways. First and perhaps foremost, the boats were designed to be easily sailed short-handed, literally single-handed, while seated at the wheel. BLUE HAWKE's cockpit is designed and laid out such that all sailing functions lead aft to the helmsman. With one hand on the wheel, the helmsman can manage the self-tailing electric primary winches for handling headsails, bring the mainsail in or out with the Hood Stoway electric in-mast furling, or engage bow thruster, and windlass all without leaving the helm. The secondaries as well as primaries, all four winches on BLUE HAWKE, are electric self-tailers and placed perfectly right next to the wheel.

Basic Information

Category: Cruising Sailboat

Model Year: 1990

Year Built: 1990

Country: United States

Dimensions

LOA: 42' 8" (13mm)

LWL: 34' 5" (10.49mm)

Beam: 13.08

Min Draft: 4' 7" (1.4mm)

Max Draft: 10' (3.05mm)

Speed, Capacities and Weight

Cruise Speed: 6.5 Knots Kts. (7 MPH)

Max Speed: 7.5 Knots Kts. (9 MPH)

Water Capacity: 100 Gallons

Fuel Capacity: 85 Gal Gallons

Accommodations

Total Cabins: 1

Hull and Deck Information

Hull Material: Fiberglass

Engine Information

Engines: 1

Manufacturer: westerbeke

Engine Type: Inboard

PHOTOS

Bluewater Runner

Under Sail



Bow



Interior



Owner's Cabin, V-Berth



Head



Nav Station



Galley, Aft



Galley, from Above



Windlass and Foredeck



Looking Fwd.



Cockpit, Port



Cockpit, Stbd.



Winches



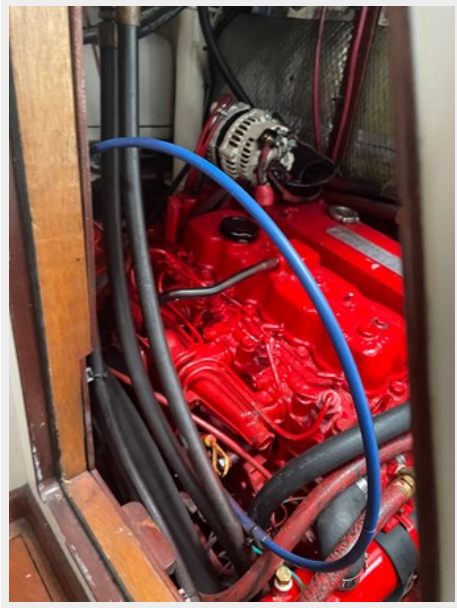
Push-button Controls



Push-button Controls



Engine



Engine and Generator



Generator



Profile, Moored



CONTACTS

Andrey Shestakov, leading yacht broker of the sales department of Shestakov Yacht Sales Inc. Shestakov Yacht Sales Inc., the official representative of the Miami/Fort Lauderdale FL headquarters.

Contact details

Email: andrey@shestakovyachtsales.com

Web: shestakovyachtsales.com/en/

Telephones

USA: +1(954)274-4435

Office hours

Monday – Saturday: **9:00 - 21:00** EDT

Sunday: **closed**

Address



Harbour Towne Marina, 850 NE 3rd St,
STE 213, Dania, FL 33004