

SHAGMA — AZIMUT YACHTS



Builder: AZIMUT YACHTS

Year Built: 2019

Model: Motor Yacht

Price: PRICE ON APPLICATION

Location: France

LOA: 70' 2" (21.37m)

Beam: 17.38

Max Draft: 5' 7" (1.69m)

Cruise Speed: 30 Knots Kts. (35 MPH)

Max Speed: 36 Knots Kts. (41 MPH)

Our experienced yacht broker, Andrey Shestakov, will help you choose and buy a yacht that best suits your needs **SHAGMA — AZIMUT YACHTS** from our catalogue. Presently, at Shestakov Yacht Sales Inc., we have a wide variety of yachts available on our sale's list. We also work in close contact with all the big yacht manufacturers from all over the world.

If you would like to buy a yacht **SHAGMA — AZIMUT YACHTS** or would like help answering any questions concerning purchasing, selling or chartering a yacht, please call **+1(954)274-4435**

TABLE OF CONTENTS

TABLE OF CONTENTS	2
SPECIFICATIONS	5
Basic Information	5
Dimensions	5
Speed, Capacities and Weight	5
Accommodations	5
Hull and Deck Information	5
Engine Information	6
PHOTOS	7
DJI_0619	7
DJI_0621	7
DJI_0622	7
DJI_0623	7
DJI_0625	7
DJI_0628	7
DJI_0631	8
DJI_0632	8
DJI_0633	8
DJI_0634	8
DJI_0635	8
DJI_0637	8
DJI_0642	9
DJI_0654	9
DJI_0655	9
DJI_0656	9
DJI_0659	9
DJI_0662	9
DJI_0664	10

DJI_0665	10
DJI_0666	10
DJI_0668	10
IMG_3304	10
IMG_3306	10
IMG_3307	11
IMG_3308	11
IMG_3311	11
IMG_3309	11
IMG_3312	11
IMG_3313	11
IMG_3316	12
IMG_3317	12
IMG_3320	12
IMG_3321	12
IMG_3324	12
IMG_3323	12
IMG_3326	13
IMG_3330	13
IMG_3332	13
IMG_3333	13
IMG_3334	13
IMG_3335	13
IMG_3336	14
IMG_3337	14
IMG_3338	14
IMG_3339	14
IMG_3340	14
IMG_3341	14

IMG_3344	15
IMG_3346	15
IMG_3347	15
IMG_3348	15
IMG_3349	15
IMG_3352	15
IMG_3353	16
IMG_3358	16
IMG_3359	16
IMG_3362	16
IMG_3363	16
CONTACTS	17
Contact details	17
Telephones	17
Office hours	17
Address	17

SPECIFICATIONS

Basic Information

Category: Motor Yacht

Model Year: 2019

Year Built: 2019

Country: France

Dimensions

LOA: 70' 2" (21.37m)

Beam: 17.38

Max Draft: 5' 7" (1.69m)

Speed, Capacities and Weight

Cruise Speed: 30 Knots Kts. (35 MPH)

Max Speed: 36 Knots Kts. (41 MPH)

Water Capacity: 1000 Gallons

Fuel Capacity: 1003.85 Gal Gallons

Accommodations

Total Cabins: 4

Sleeps: 8

Total Heads: 3

Crew Cabin: 2

Crew Heads: 1

Hull and Deck Information

Hull Material: GRP

Hull Configuration: Planing

Hull Designer: P.L. AUSONIO Naval
Architecture & Azimut R&D Dept.

Exterior Designer: Stefano Righini

Interior Designer: Francesco Guida

Engine Information

Engines: 3

Manufacturer: Volvo Penta

PHOTOS

DJI_0619



DJI_0621



DJI_0622



DJI_0623



DJI_0625



DJI_0628



DJI_0631



DJI_0632



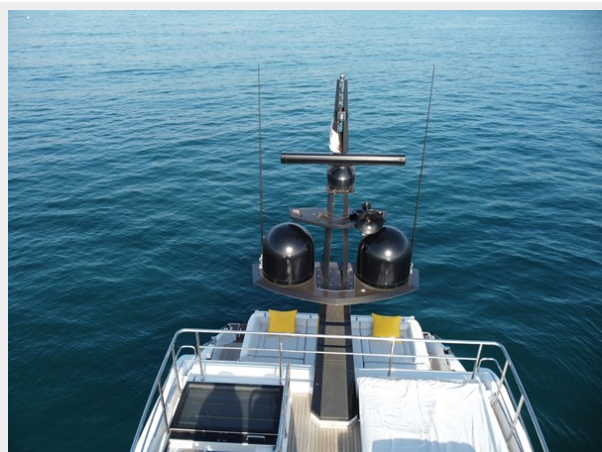
DJI_0633



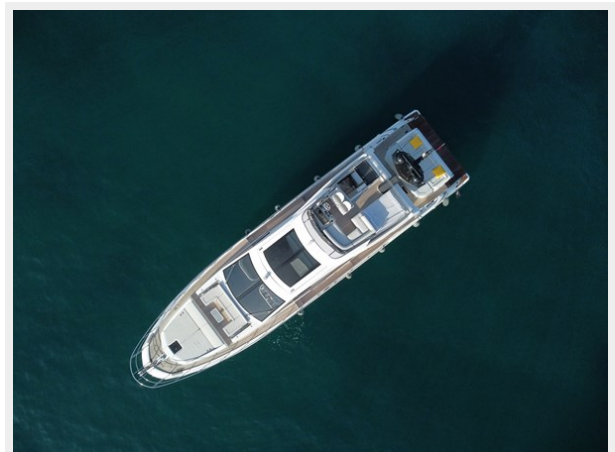
DJI_0634



DJI_0635



DJI_0637



DJI_0642



DJI_0654



DJI_0655



DJI_0656



DJI_0659



DJI_0662



DJI_0664



DJI_0665



DJI_0666



DJI_0668



IMG_3304



IMG_3306



IMG_3307



IMG_3308



IMG_3311



IMG_3309



IMG_3312



IMG_3313



IMG_3316



IMG_3317



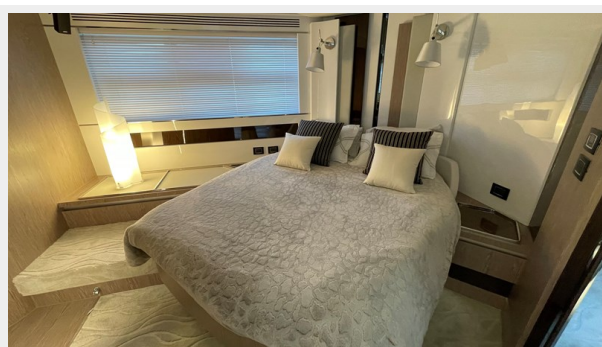
IMG_3320



IMG_3321



IMG_3323



IMG_3324



IMG_3326



IMG_3330



IMG_3332



IMG_3333



IMG_3334



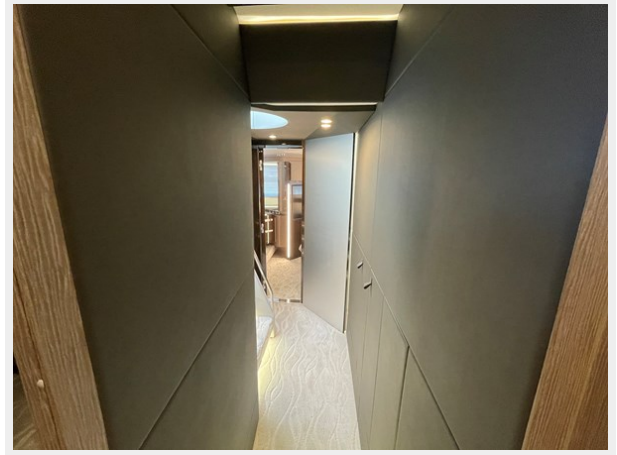
IMG_3335



IMG_3336



IMG_3337



IMG_3338



IMG_3339



IMG_3340



IMG_3341



IMG_3344



IMG_3346



IMG_3347



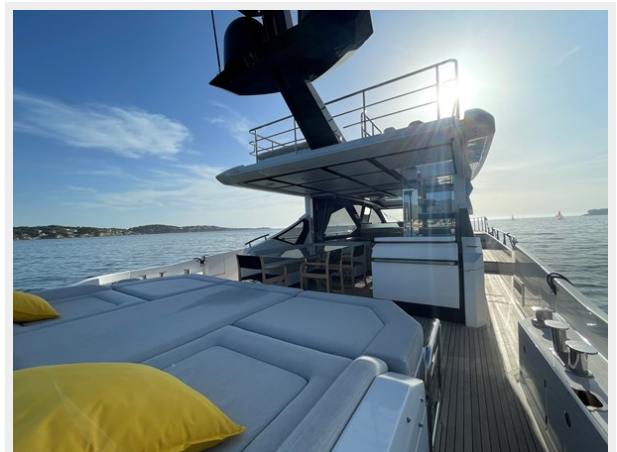
IMG_3348



IMG_3349



IMG_3352



IMG_3353



IMG_3358



IMG_3359



IMG_3362



IMG_3363



CONTACTS

Andrey Shestakov, leading yacht broker of the sales department of Shestakov Yacht Sales Inc. Shestakov Yacht Sales Inc., the official representative of the Miami/Fort Lauderdale FL headquarters.

Contact details

Email: andrey@shestakovyachtsales.com

Web: shestakovyachtsales.com/en/

Telephones

USA: +1(954)274-4435

Office hours

Monday – Saturday: **9:00 - 21:00** EDT

Sunday: **closed**

Address



Harbour Towne Marina, 850 NE 3rd St,
STE 213, Dania, FL 33004