

## JUST RIGHT — EGG HARBOR



**Builder:** EGG HARBOR

**Year Built:** 1986

**Model:** Sport Yacht

**Price:** PRICE ON APPLICATION

**Location:** United States

**LOA:** 60' (18.29mm)

**Beam:** 17.5

**Max Draft:** 5' 3" (1.6mm)

Our experienced yacht broker, Andrey Shestakov, will help you choose and buy a yacht that best suits your needs **Just Right — EGG HARBOR** from our catalogue. Presently, at Shestakov Yacht Sales Inc., we have a wide variety of yachts available on our sale's list. We also work in close contact with all the big yacht manufacturers from all over the world.

If you would like to buy a yacht **Just Right — EGG HARBOR** or would like help answering any questions concerning purchasing, selling or chartering a yacht, please call **+1(954)274-4435**

# TABLE OF CONTENTS

TABLE OF CONTENTS	2
SPECIFICATIONS	5
Overview	5
Basic Information	5
Dimensions	5
Speed, Capacities and Weight	5
Accommodations	5
Hull and Deck Information	6
Engine Information	6
PHOTOS	7
8551420_20221014064247450_1_XLARGE	7
8551420_20221014064249378_1_XLARGE	7
8551420_20221014064327861_1_XLARGE	7
8551420_20221014064329868_1_XLARGE	7
8551420_20221014081021710_1_XLARGE	8
8551420_20221014081023765_1_XLARGE	8
8551420_20221014081029888_1_XLARGE	8
8551420_20221014081027815_1_XLARGE	8
8551420_20221014081025832_1_XLARGE	8
8551420_20221014064253472_1_XLARGE	8
8551420_20221014064251533_1_XLARGE	9
8551420_20221014064237457_1_XLARGE	9
8551420_20221014064024015_1_XLARGE	9
8551420_20221014074820327_1_XLARGE	9
8551420_20221014064027028_1_XLARGE	10
8551420_20221014064026043_1_XLARGE	10
8551420_20221014064028066_1_XLARGE	10
8551420_20221014064030069_1_XLARGE	10

---

8551420_20221014064031109_1_XLARGE	11
8551420_20221014064033082_1_XLARGE	11
8551420_20221014064035078_1_XLARGE	11
8551420_20221014064036116_1_XLARGE	11
8551420_20221014064038145_1_XLARGE	11
8551420_20221014064039208_1_XLARGE	11
8551420_20221014064041245_1_XLARGE	12
8551420_20221014064043086_1_XLARGE	12
8551420_20221014064044103_1_XLARGE	12
8551420_20221014064207368_1_XLARGE	12
8551420_20221014064209288_1_XLARGE	13
8551420_20221014064220366_1_XLARGE	13
8551420_20221014064226285_1_XLARGE	13
8551420_20221014064222279_1_XLARGE	13
8551420_20221014064228304_1_XLARGE	14
8551420_20221014064229370_1_XLARGE	14
8551420_20221014064231417_1_XLARGE	14
8551420_20221014064233381_1_XLARGE	14
8551420_20221014064235416_1_XLARGE	14
8551420_20221014064239459_1_XLARGE	14
8551420_20221014064211236_1_XLARGE	15
8551420_20221014064224423_1_XLARGE	15
8551420_20221014064216301_1_XLARGE	15
8551420_20221014064218329_1_XLARGE	15
8551420_20221014064245448_1_XLARGE	16
8551420_20221014064241499_1_XLARGE	16
8551420_20221014064243489_1_XLARGE	16
8551420_20221014064212258_1_XLARGE	16
8551420_20221014064214470_1_XLARGE	16

---

---

100964_0_070320091644_0	16
100964_0_070320091644_11	17
100964_0_070320091644_13	17
CONTACTS	18
Contact details	18
Telephones	18
Office hours	18
Address	18

---

# SPECIFICATIONS

---

## Overview

---

Think big, run fast.

Designed, engineered, and constructed for maximum speed and fishability.

New canvas 12/2022, new 48mi. radar, new engine room lights.

Three staterooms plus crew quarters, three heads. Salon and galley on same level. Walkaround queen berth in master stateroom..

Full tower. Dingy with outboard engine.

Only 670 hours on the Detroit Diesel 12V92TA's Closed cooling system.

## Basic Information

---

**Category:** Sport Yacht

**Model Year:** 1986

**Year Built:** 1986

**Country:** United States

## Dimensions

---

**LOA:** 60' (18.29mm)

**Beam:** 17.5

**Max Draft:** 5' 3" (1.6mm)

## Speed, Capacities and Weight

---

**Water Capacity:** 220 Gallons

**Holding Tank:** 100 Gal Gallons

**Fuel Capacity:** 1360 Gal Gallons

## Accommodations

---

**Total Cabins:** 3

---

## Hull and Deck Information

---

**Hull Material:** Fiberglass

---

## Engine Information

---

**Engines:** 2

**Manufacturer:** Detroit Diesel

**Engine Type:** Inboard

**Fuel Type:** Diesel

# PHOTOS

8551420\_20221014064247450\_1\_XLARGE



8551420\_20221014064249378\_1\_XLARGE



8551420\_20221014064327861\_1\_XLARGE

8551420\_20221014064329868\_1\_XLARGE





8551420\_20221014081021710\_1\_XLARGE

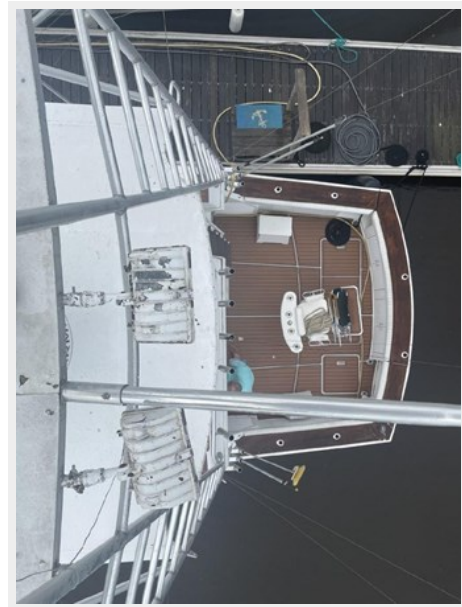


8551420\_20221014081023765\_1\_XLARGE



8551420\_20221014081029888\_1\_XLARGE

8551420\_20221014081027815\_1\_XLARGE



8551420\_20221014081025832\_1\_XLARGE



8551420\_20221014064253472\_1\_XLARGE





8551420\_20221014064251533\_1\_XLARGE



8551420\_20221014064237457\_1\_XLARGE



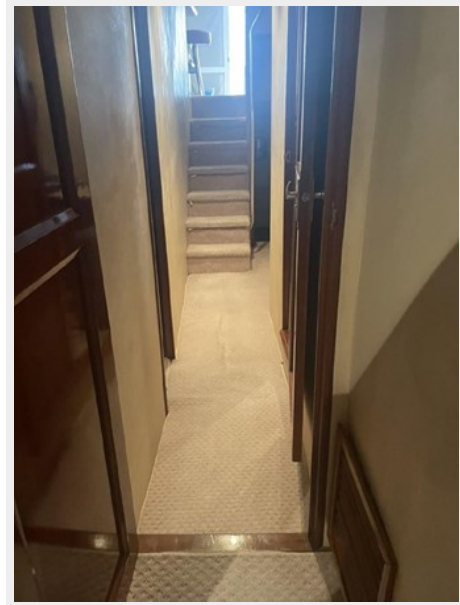
8551420\_20221014064024015\_1\_XLARGE

8551420\_20221014074820327\_1\_XLARGE



8551420\_20221014064027028\_1\_XLARGE

8551420\_20221014064026043\_1\_XLARGE



8551420\_20221014064028066\_1\_XLARGE



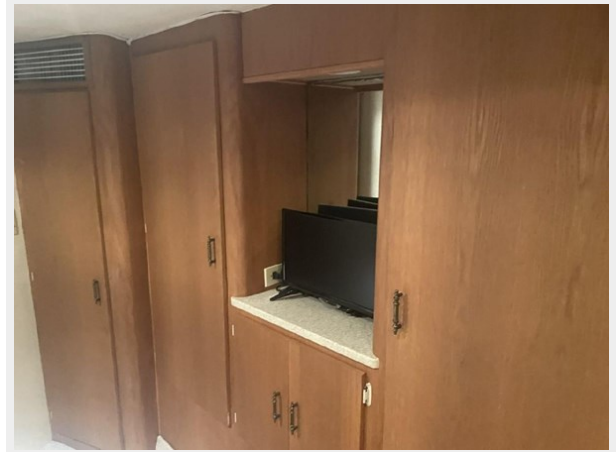
8551420\_20221014064030069\_1\_XLARGE



8551420\_20221014064031109\_1\_XLARGE



8551420\_20221014064033082\_1\_XLARGE



8551420\_20221014064035078\_1\_XLARGE



8551420\_20221014064036116\_1\_XLARGE



8551420\_20221014064038145\_1\_XLARGE



8551420\_20221014064039208\_1\_XLARGE





8551420\_20221014064041245\_1\_XLARGE



8551420\_20221014064043086\_1\_XLARGE



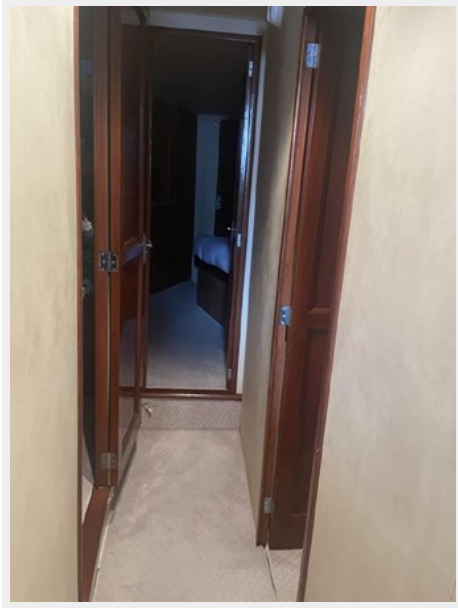
8551420\_20221014064044103\_1\_XLARGE



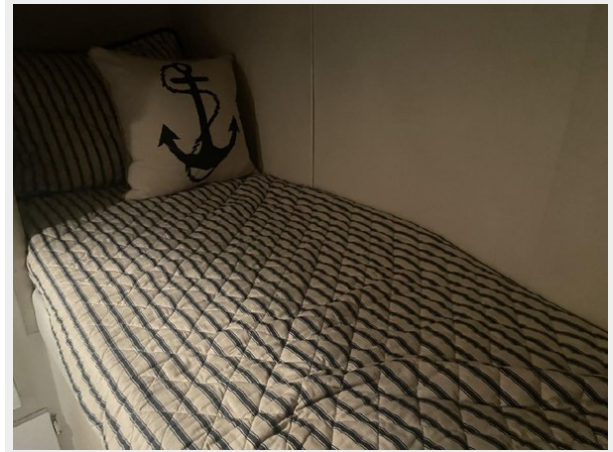
8551420\_20221014064207368\_1\_XLARGE



8551420\_20221014064209288\_1\_XLARGE

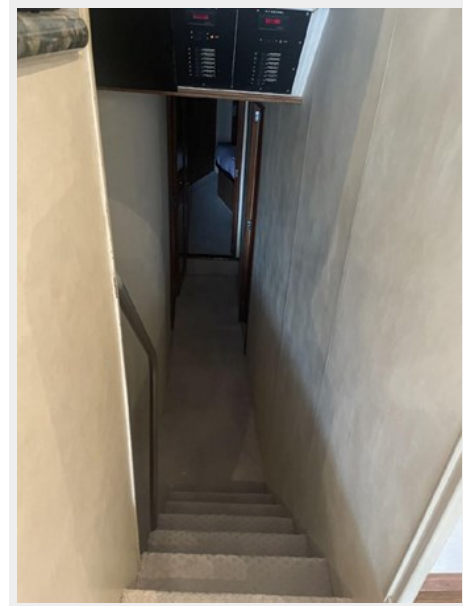


8551420\_20221014064220366\_1\_XLARGE



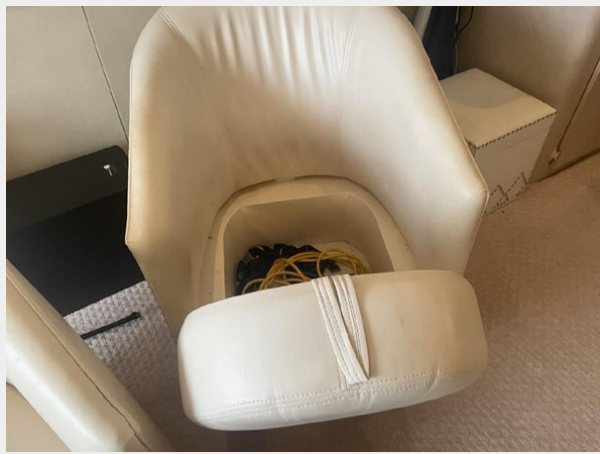
8551420\_20221014064226285\_1\_XLARGE

8551420\_20221014064222279\_1\_XLARGE





8551420\_20221014064228304\_1\_XLARGE



8551420\_20221014064229370\_1\_XLARGE



8551420\_20221014064231417\_1\_XLARGE



8551420\_20221014064233381\_1\_XLARGE



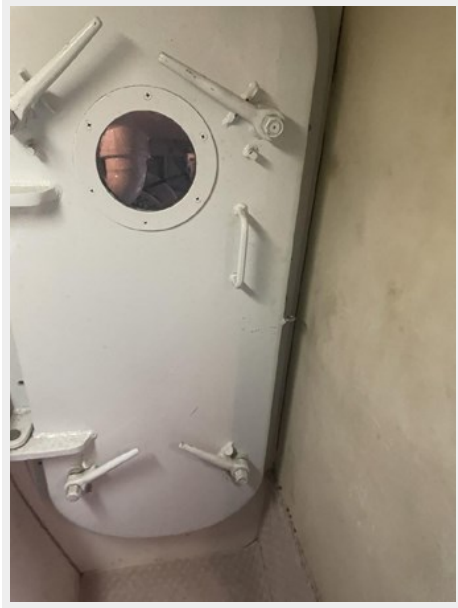
8551420\_20221014064235416\_1\_XLARGE



8551420\_20221014064239459\_1\_XLARGE



8551420\_20221014064211236\_1\_XLARGE



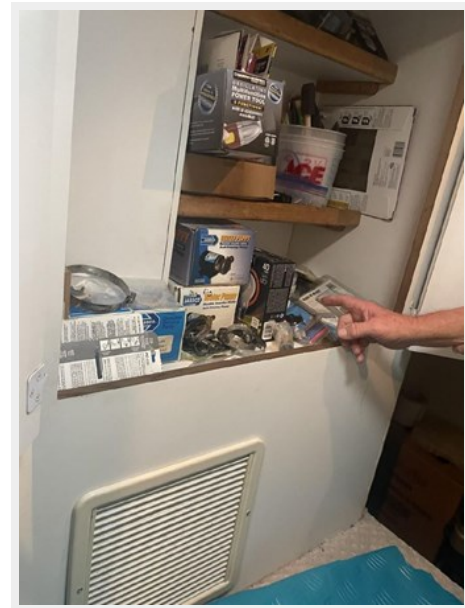
8551420\_20221014064224423\_1\_XLARGE



8551420\_20221014064216301\_1\_XLARGE



8551420\_20221014064218329\_1\_XLARGE





8551420\_20221014064245448\_1\_XLARGE



8551420\_20221014064241499\_1\_XLARGE



8551420\_20221014064243489\_1\_XLARGE



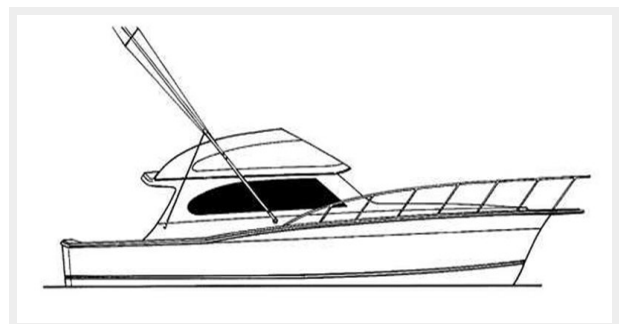
8551420\_20221014064212258\_1\_XLARGE



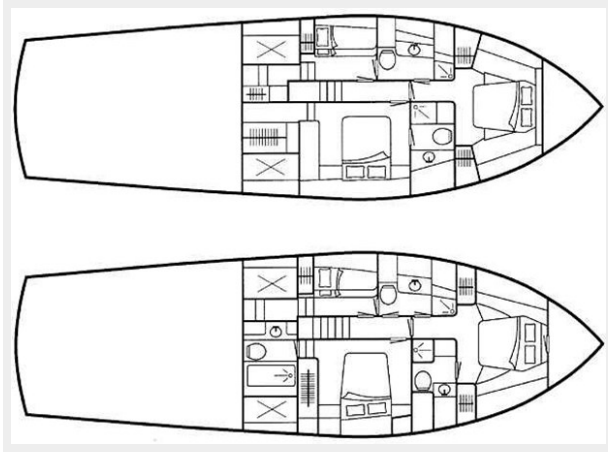
8551420\_20221014064214470\_1\_XLARGE



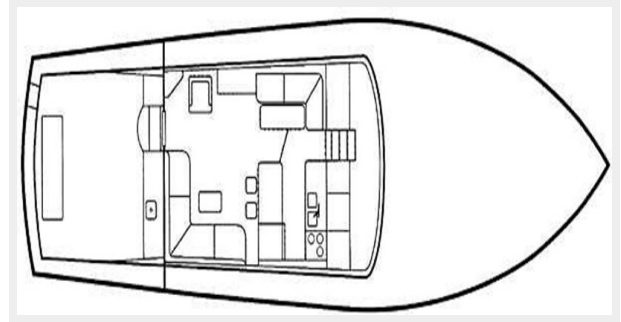
100964\_0\_070320091644\_0



100964\_0\_070320091644\_11



100964\_0\_070320091644\_13



---

# CONTACTS

---

Andrey Shestakov, leading yacht broker of the sales department of Shestakov Yacht Sales Inc. Shestakov Yacht Sales Inc., the official representative of the Miami/Fort Lauderdale FL headquarters.

---

## Contact details

---

Email: [andrey@shestakovyachtsales.com](mailto:andrey@shestakovyachtsales.com)

Web: [shestakovyachtsales.com/en/](http://shestakovyachtsales.com/en/)

---

## Telephones

---

USA: +1(954)274-4435

---

## Office hours

---

Monday – Saturday: **9:00 - 21:00** EDT

Sunday: **closed**

---

## Address

---



Harbour Towne Marina, 850 NE 3rd St,  
STE 213, Dania, FL 33004