

IRISH LADY — GRAND BANKS



Builder: GRAND BANKS

Year Built: 1996

Model: Trawler Yacht

Price: PRICE ON APPLICATION

Location: United States

LOA: 46' (14.02mm)

Beam: 14.75

Max Draft: 4' 6" (1.37mm)

Cruise Speed: 13 Knots Kts. (15 MPH)

Max Speed: 16 Knots Kts. (18 MPH)

Our experienced yacht broker, Andrey Shestakov, will help you choose and buy a yacht that best suits your needs **Irish Lady — GRAND BANKS** from our catalogue. Presently, at Shestakov Yacht Sales Inc., we have a wide variety of yachts available on our sale's list. We also work in close contact with all the big yacht manufacturers from all over the world.

If you would like to buy a yacht **Irish Lady — GRAND BANKS** or would like help answering any questions concerning purchasing, selling or chartering a yacht, please call **+1(954)274-4435**

TABLE OF CONTENTS

TABLE OF CONTENTS	2
SPECIFICATIONS	6
Overview	6
Basic Information	6
Dimensions	6
Speed, Capacities and Weight	6
Accommodations	7
Hull and Deck Information	7
Engine Information	7
PHOTOS	8
WQUW5578	8
IMG_5386	8
IMG_5387	8
IMG_5388	8
IMG_5389 - Copy	8
KZZA8608	8
IMG_5391	9
IMG_5392 - Copy	9
IMG_5393 - Copy	9
IMG_5394 - Copy	9
IMG_5396	9
IMG_5395	9
IMG_5397	10
IMG_5398	10
IMG_5399	10
IMG_5400	10
IMG_5401	11
IMG_5402	11

IMG_5403	11
IMG_5404	11
IMG_5405	12
IMG_5406	12
IMG_5407	12
IMG_5408	12
IMG_5409	12
IMG_5410	12
IMG_5411	13
IMG_5412	13
IMG_5413	13
IMG_5414	13
IMG_5415	13
IMG_5416	13
IMG_5417	14
IMG_5418	14
IMG_5419	14
IMG_5420	14
IMG_5422	14
IMG_5421	14
IMG_5423	15
IMG_5424	15
IMG_5426	15
IMG_5427	15
IMG_5428	15
IMG_5430	15
IMG_5431	16
IMG_5432	16
IMG_5433	16

IMG_5434	16
IMG_5435	17
IMG_5436	17
IMG_5438	17
IMG_5437	17
IMG_5439	18
IMG_5440	18
IMG_5441	18
IMG_5442	18
IMG_5443	19
IMG_5444	19
IMG_5447	19
IMG_5445	19
IMG_5448	20
IMG_5449	20
IMG_5552	20
IMG_5554	20
IMG_5557	21
IMG_5559	21
IMG_5562	21
IMG_5563	21
IMG_5564	22
IMG_5565	22
IMG_5566	22
IMG_5567	22
IMG_5569	23
IMG_5568	23
IMG_5570	23
IMG_5571	23

IMG_5572	24
IMG_5573	24
IMG_5574	24
IMG_5513	24
IMG_5514	25
IMG_5515	25
IMG_5516	25
IMG_5517	25
IMG_5518	25
IMG_5519	25
IMG_5536	26
IMG_5520	26
IMG_5537	26
IMG_5538	26
IMG_5555	27
IMG_5556	27
IMG_5576	27
IMG_5577	27
IMG_5578	27
IMG_E5530	27
CONTACTS	28
Contact details	28
Telephones	28
Office hours	28
Address	28

SPECIFICATIONS

Overview

Irish Lady is a great example of a cruise-ready GB, with good equipment and all of the features needed for a lifetime of boating. Two cabins, plus crew berth, and two heads, a very complete galley, and updated GPS plotter. She shows exemplary care and attention to the hull and brightwork. Call for more information.

Grand Banks's 46 Europa is the design of choice for weekend destinations, or for long-range cruising. The structural integrity, sea-keeping ability and fit and finish are at a level not achieved in any other model anywhere approaching this price-point. Call now to arrange a showing.

Basic Information

Category: Trawler Yacht

Sub Category: Sedan

Model Year: 1996

Year Built: 1996

Country: United States

Dimensions

LOA: 46' (14.02mm)

Beam: 14.75

Max Draft: 4' 6" (1.37mm)

Speed, Capacities and Weight

Cruise Speed: 13 Knots Kts. (15 MPH)

Max Speed: 16 Knots Kts. (18 MPH)

Gross Tonnage: 35 Pounds

Water Capacity: 290 Gallons

Holding Tank: 50 Gal Gallons

Fuel Capacity: 600 Gal Gallons

Accommodations

Total Cabins: 2

Total Berths: 4

Sleeps: 8

Total Heads: 2

Hull and Deck Information

Hull Material: Fiberglass

Engine Information

Engines: 2

Manufacturer: Caterpillar

Engine Type: Inboard

Fuel Type: Diesel

PHOTOS

WQUW5578



IMG_5386



IMG_5387



IMG_5388



IMG_5389 - Copy



KZZA8608



IMG_5391



IMG_5392 - Copy



IMG_5393 - Copy



IMG_5394 - Copy



IMG_5396



IMG_5395



IMG_5397



IMG_5398



IMG_5399



IMG_5400



IMG_5401



IMG_5402



IMG_5403



IMG_5404



IMG_5405



IMG_5406



IMG_5407



IMG_5408



IMG_5409



IMG_5410



IMG_5411



IMG_5412



IMG_5413



IMG_5414



IMG_5415



IMG_5416



IMG_5417



IMG_5418



IMG_5419



IMG_5420



IMG_5422



IMG_5421



IMG_5423



IMG_5424



IMG_5426



IMG_5427



IMG_5428



IMG_5430



IMG_5431



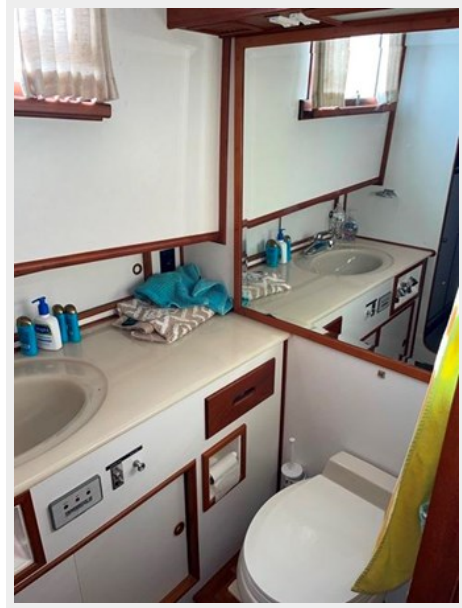
IMG_5432



IMG_5433



IMG_5434



IMG_5435



IMG_5436



IMG_5438



IMG_5437



IMG_5439



IMG_5440



IMG_5441



IMG_5442



IMG_5443



IMG_5444



IMG_5447



IMG_5445



IMG_5448



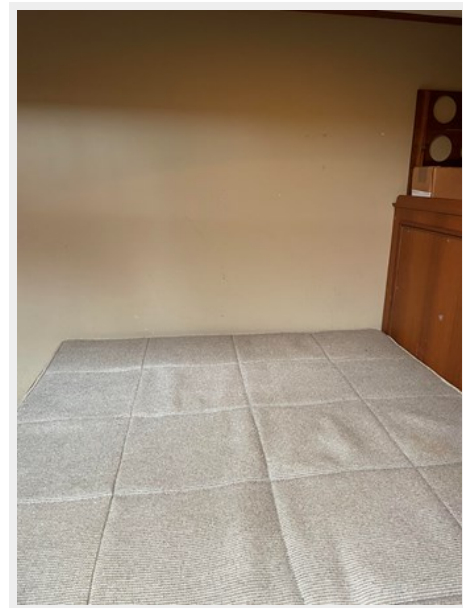
IMG_5449



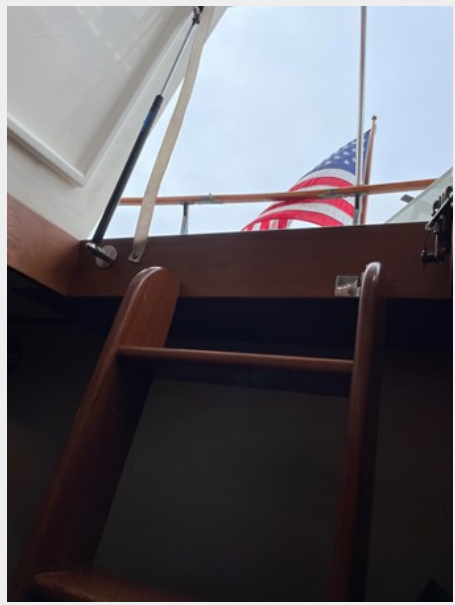
IMG_5552



IMG_5554



IMG_5557



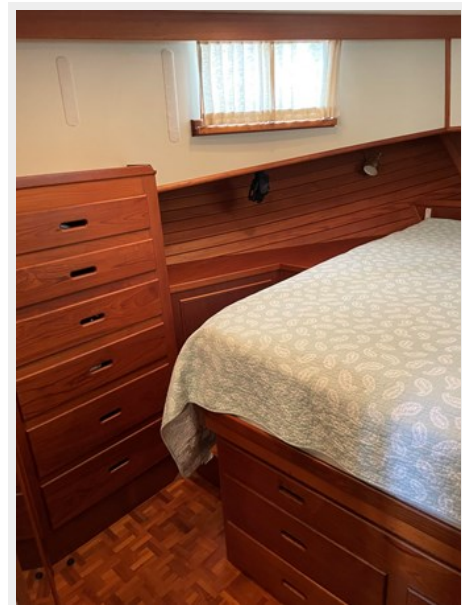
IMG_5559



IMG_5562



IMG_5563



IMG_5564



IMG_5565



IMG_5566



IMG_5567



IMG_5568



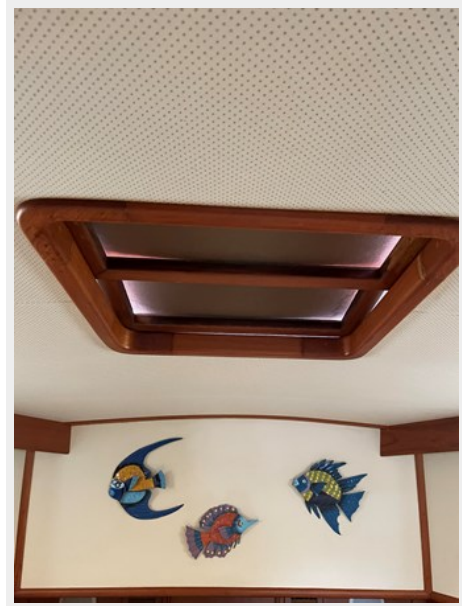
IMG_5569



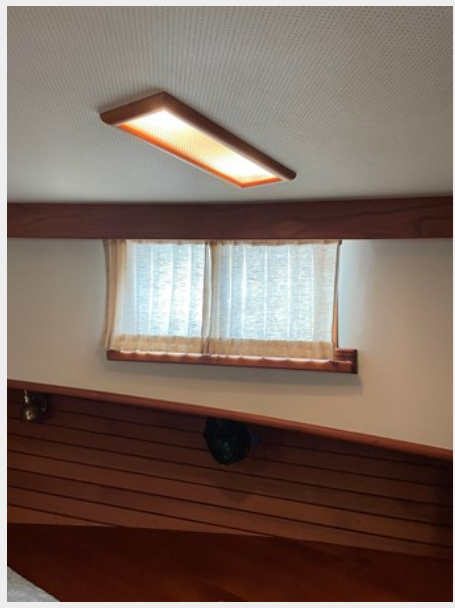
IMG_5570



IMG_5571



IMG_5572



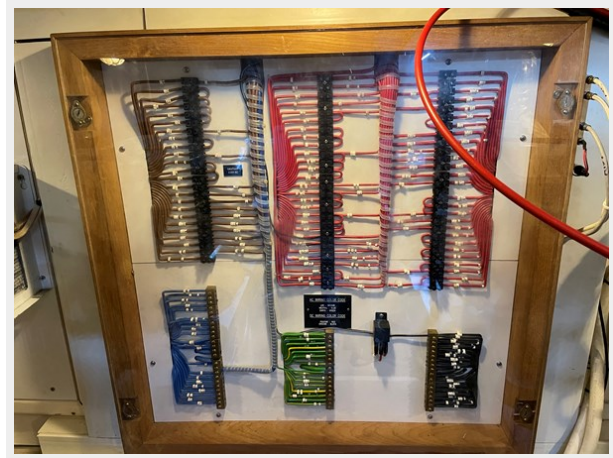
IMG_5573



IMG_5574



IMG_5513



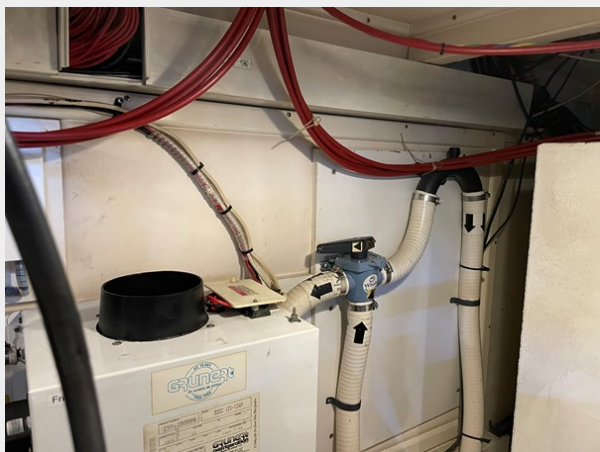
IMG_5514



IMG_5515



IMG_5516



IMG_5517



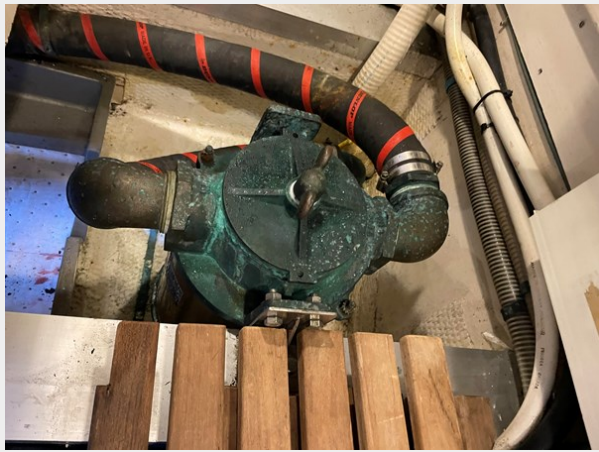
IMG_5518



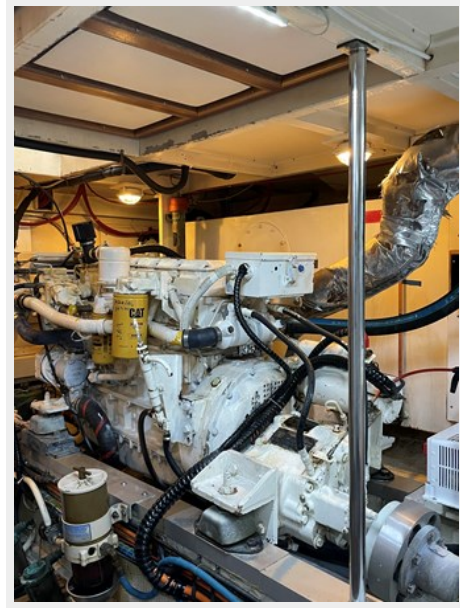
IMG_5519



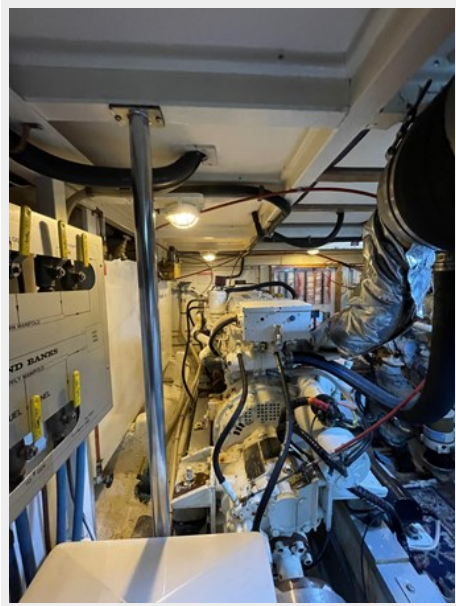
IMG_5520



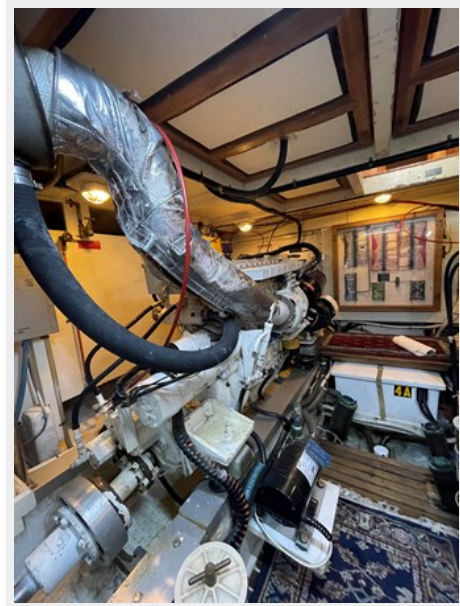
IMG_5536



IMG_5537



IMG_5538



IMG_5555



IMG_5556



IMG_5576



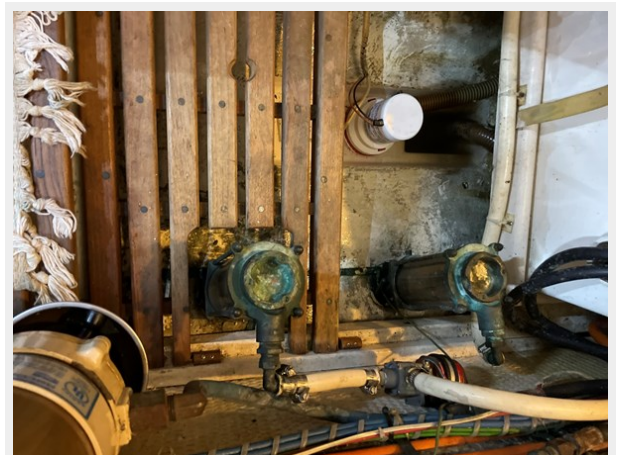
IMG_5577



IMG_5578



IMG_E5530



CONTACTS

Andrey Shestakov, leading yacht broker of the sales department of Shestakov Yacht Sales Inc. Shestakov Yacht Sales Inc., the official representative of the Miami/Fort Lauderdale FL headquarters.

Contact details

Email: andrey@shestakovyachtsales.com

Web: shestakovyachtsales.com/en/

Telephones

USA: +1(954)274-4435

Office hours

Monday – Saturday: **9:00 - 21:00** EDT

Sunday: **closed**

Address



Harbour Towne Marina, 850 NE 3rd St,
STE 213, Dania, FL 33004