

GRACE — SEA RAY



Builder: SEA RAY

Year Built: 2008

Model: Motor Yacht

Price: PRICE ON APPLICATION

Location: United States

LOA: 55' (16.76mm)

Beam: 15.91

Max Draft: 4' 6" (1.37mm)

Cruise Speed: 27 Knots Kts. (31 MPH)

Max Speed: 31 Knots Kts. (36 MPH)

Our experienced yacht broker, Andrey Shestakov, will help you choose and buy a yacht that best suits your needs **GRACE — SEA RAY** from our catalogue. Presently, at Shestakov Yacht Sales Inc., we have a wide variety of yachts available on our sale's list. We also work in close contact with all the big yacht manufacturers from all over the world.

If you would like to buy a yacht **GRACE — SEA RAY** or would like help answering any questions concerning purchasing, selling or chartering a yacht, please call **+1(954)274-4435**

TABLE OF CONTENTS

| | |
|------------------------------|----|
| TABLE OF CONTENTS | 2 |
| SPECIFICATIONS | 3 |
| Overview | 3 |
| Basic Information | 3 |
| Dimensions | 3 |
| Speed, Capacities and Weight | 4 |
| Accommodations | 4 |
| Hull and Deck Information | 4 |
| Engine Information | 4 |
| PHOTOS | 5 |
| 23 | 8 |
| 24 | 8 |
| 25 | 9 |
| 26 | 9 |
| 27 | 9 |
| 28 | 9 |
| 29 | 9 |
| 30 | 9 |
| 31 | 10 |
| 32 | 10 |
| CONTACTS | 11 |
| Contact details | 11 |
| Telephones | 11 |
| Office hours | 11 |
| Address | 11 |

SPECIFICATIONS

Overview

"Grace" is a 2008 55' Sea Ray Sundancer that has a 2 stateroom and 2 head layout. She features cockpit AC/heat, a spacious salon, teak decks, a hydraulic swim platform and much more. Her current owner has already purchased his new boat and is ready for this one to be the next 55' Sea Ray sold!

Here are a few notable features and improvements:

- **NEW Awlgrip Hull Paint 7/2022**
- Fresh 1,000 Service Completed 7/2022
- *NEW Bottom Job Completed 7/2022*
- Teak Cockpit Deck
- Hydraulic Swim Platform
- FLIR Night Vision Camera
- AC Units Completely Serviced 8/2022
- **800HP Common Rail MAN Engines**
- Splendide Washer/Dryer Combo

Basic Information

Category: Motor Yacht

Model Year: 2008

Year Built: 2008

Country: United States

Dimensions

LOA: 55' (16.76mm)

Beam: 15.91

Max Draft: 4' 6" (1.37mm)

Speed, Capacities and Weight

Cruise Speed: 27 Knots Kts. (31 MPH)

Max Speed: 31 Knots Kts. (36 MPH)

Gross Tonnage: 53500 Pounds

Water Capacity: 200 Gallons

Holding Tank: 70 Gal Gallons

Fuel Capacity: 825 Gal Gallons

Accommodations

Total Cabins: 2

Total Berths: 3

Total Heads: 2

Hull and Deck Information

Hull Material: Fiberglass

Engine Information

Engines: 2

Manufacturer: MAN

Engine Type: Inboard

Fuel Type: Diesel

PHOTOS



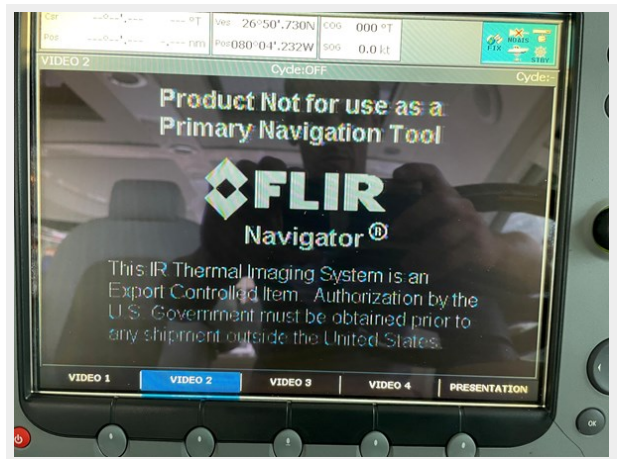






23

24



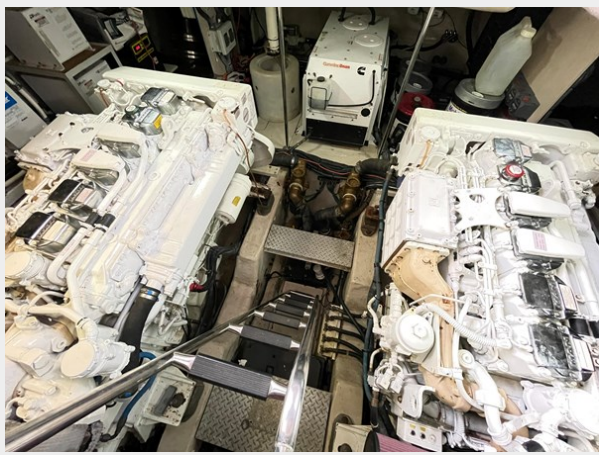
25



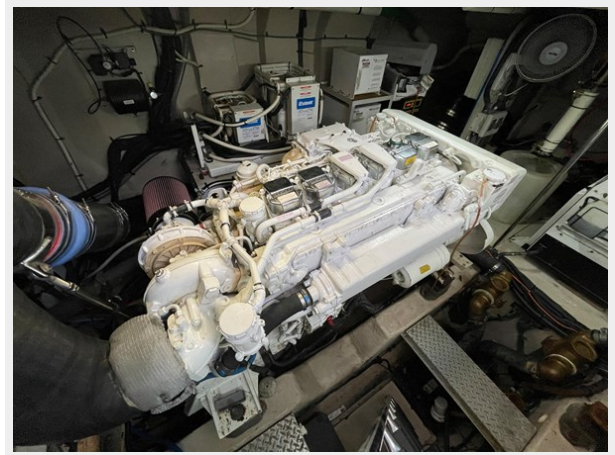
26



27



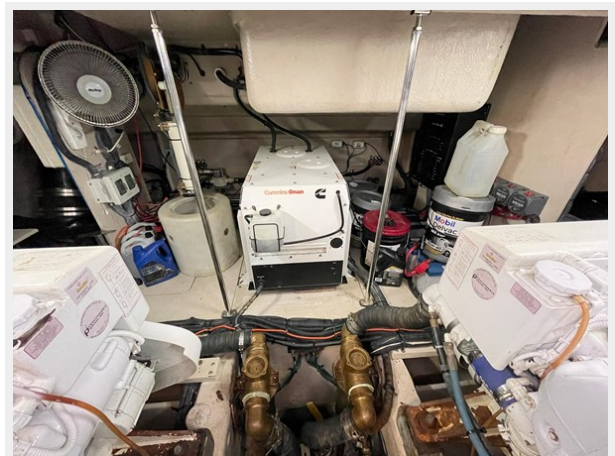
28



29



30



31



32



CONTACTS

Andrey Shestakov, leading yacht broker of the sales department of Shestakov Yacht Sales Inc. Shestakov Yacht Sales Inc., the official representative of the Miami/Fort Lauderdale FL headquarters.

Contact details

Email: andrey@shestakovyachtsales.com

Web: shestakovyachtsales.com/en/

Telephones

USA: +1(954)274-4435

Office hours

Monday – Saturday: **9:00 - 21:00** EDT

Sunday: **closed**

Address



Harbour Towne Marina, 850 NE 3rd St,
STE 213, Dania, FL 33004