

## SEABOSS — HORIZON



**Builder:** HORIZON

**Year Built:** 2015

**Model:** Catamaran

**Price:** PRICE ON APPLICATION

**Location:** United States

**LOA:** 60' 9" (18.52mm)

**Beam:** 24.5

**Min Draft:** 4' 8" (1.42mm)

**Max Draft:** 5' (1.52mm)

**Cruise Speed:** 18 Knots Kts. (21 MPH)

**Max Speed:** 22 Knots Kts. (25 MPH)

Our experienced yacht broker, Andrey Shestakov, will help you choose and buy a yacht that best suits your needs **SEABOSS — HORIZON** from our catalogue. Presently, at Shestakov Yacht Sales Inc., we have a wide variety of yachts available on our sale's list. We also work in close contact with all the big yacht manufacturers from all over the world.

If you would like to buy a yacht **SEABOSS — HORIZON** or would like help answering any questions concerning purchasing, selling or chartering a yacht, please call **+1(954)274-4435**

# TABLE OF CONTENTS

TABLE OF CONTENTS	2
SPECIFICATIONS	4
Overview	4
Basic Information	4
Dimensions	4
Speed, Capacities and Weight	4
Accommodations	5
Hull and Deck Information	5
Engine Information	5
PHOTOS	6
SALON 1	6
SALON 2	6
MASTER 1	6
MASTER 2	6
MASTER SHOWER	6
VIP 1	6
VIP 2	7
VIP BATH	7
TWIN	7
TWIN BATH	7
AFT DECK 1	7
AFT DECK 2	7
AFT DECK 3	8
AFT DECK 4	8
FLYBRIDGE 1	8
FLYBRIDGE 2	8
FLYBRIDGE 3	8
FLYBRIDGE 4	8

---

FLYBRIDGE 5	9
FLYBRIDGE 6	9
PROFILE	9
FLYBRIDGE LAYOUT	9
MAIN DECK LAYOUT	9
LOWER DECK LAYOUT	9
CONTACTS	10
Contact details	10
Telephones	10
Office hours	10
Address	10

---

---

# SPECIFICATIONS

---

## Overview

---

## Basic Information

---

**Category:** Catamaran

**Model Year:** 2016

**Year Built:** 2015

**Country:** United States

## Dimensions

---

**LOA:** 60' 9" (18.52mm)

**LWL:** 54' (16.46mm)

**LOD:** 60' 9" (18.52mm)

**Beam:** 24.5

**Min Draft:** 4' 8" (1.42mm)

**Max Draft:** 5' (1.52mm)

## Speed, Capacities and Weight

---

**Cruise Speed:** 18 Knots Kts. (21 MPH)

**Cruise Speed Range:** 500

**Max Speed:** 22 Knots Kts. (25 MPH)

**Max Speed Range:** 300 Kts.

**Gross Tonnage:** 40 Pounds

**Water Capacity:** 300 Gallons

**Holding Tank:** 120 Gal Gallons

**Fuel Capacity:** 1350 Gal Gallons

**Fuel Consumption:** 50 Gal Gallons

---

## Accommodations

---

**Total Cabins:** 4

**Total Berths:** 8

**Sleeps:** 8

**Total Heads:** 4

**Crew Cabin:** 2

**Crew Berths:** 2

**Crew Heads:** 1

---

## Hull and Deck Information

---

**Hull Material:** Composite Fiberglass

**Deck Material:** Composite Fiberglass

**Hull Configuration:** Catamaran

**Hull Color:** White

**Hull Designer:** Angelo Lavranos

**Exterior Designer:** Peter Gimpell

**Interior Designer:** Leigh Ford

---

## Engine Information

---

**Engines:** 2

**Manufacturer:** Cummins

**Engine Type:** Inboard

**Fuel Type:** Diesel

# PHOTOS

**SALON 1**



**SALON 2**



**MASTER 1**



**MASTER 2**



**MASTER SHOWER**



**VIP 1**



VIP 2



VIP BATH



TWIN



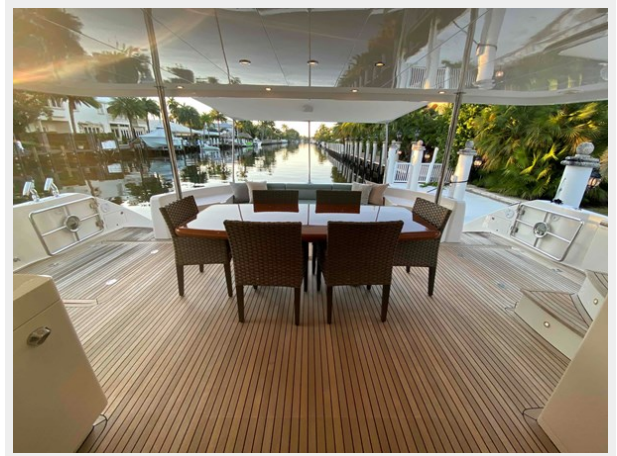
TWIN BATH



AFT DECK 1



AFT DECK 2



**AFT DECK 3**



**AFT DECK 4**



**FLYBRIDGE 1**



**FLYBRIDGE 2**



**FLYBRIDGE 3**

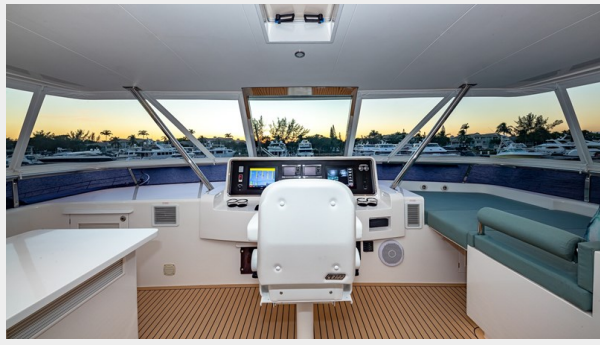


**FLYBRIDGE 4**

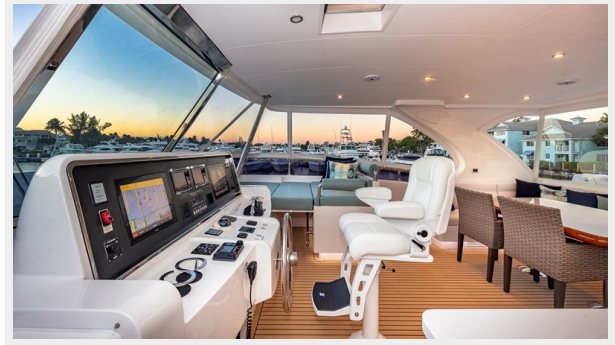




### FLYBRIDGE 5



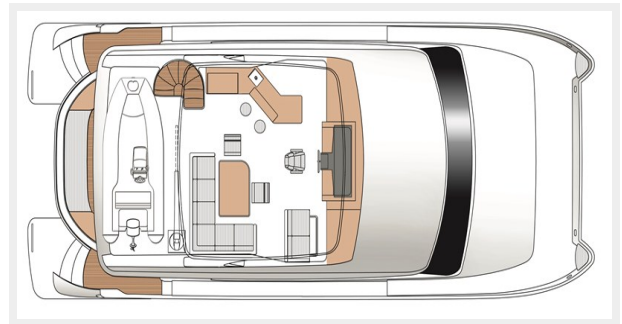
### FLYBRIDGE 6



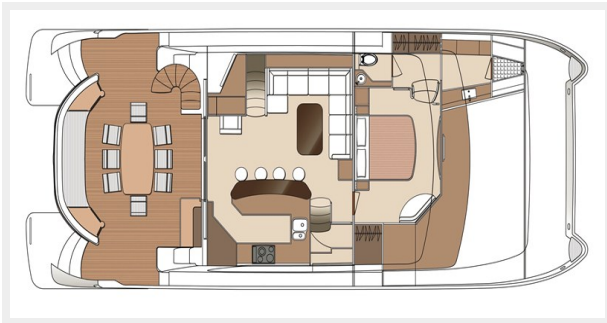
### PROFILE



### FLYBRIDGE LAYOUT



### MAIN DECK LAYOUT



### LOWER DECK LAYOUT



# CONTACTS

---

Andrey Shestakov, leading yacht broker of the sales department of Shestakov Yacht Sales Inc. Shestakov Yacht Sales Inc., the official representative of the Miami/Fort Lauderdale FL headquarters.

## Contact details

---

Email: [andrey@shestakovyachtsales.com](mailto:andrey@shestakovyachtsales.com)

Web: [shestakovyachtsales.com/en/](http://shestakovyachtsales.com/en/)

## Telephones

---

USA: +1(954)274-4435

## Office hours

---

Monday – Saturday: **9:00 - 21:00** EDT

Sunday: **closed**

## Address

---



Harbour Towne Marina, 850 NE 3rd St,  
STE 213, Dania, FL 33004