

WONDER — VIKING



Builder: VIKING

Year Built: 2018

Model: Sport Fisherman

Price: PRICE ON APPLICATION

Location: United States

LOA: 68' 7" (20.9mm)

Cruise Speed: 30 Knots Kts. (35 MPH)

Our experienced yacht broker, Andrey Shestakov, will help you choose and buy a yacht that best suits your needs **Wonder — VIKING** from our catalogue. Presently, at Shestakov Yacht Sales Inc., we have a wide variety of yachts available on our sale's list. We also work in close contact with all the big yacht manufacturers from all over the world.

If you would like to buy a yacht **Wonder — VIKING** or would like help answering any questions concerning purchasing, selling or chartering a yacht, please call **+1(954)274-4435**

TABLE OF CONTENTS

TABLE OF CONTENTS	2
SPECIFICATIONS	5
Overview	5
Basic Information	5
Dimensions	5
Speed, Capacities and Weight	5
Accommodations	5
Hull and Deck Information	6
Engine Information	6
PHOTOS	7
WEB-0017	7
WEB-0026-2	7
WEB-5481	7
WEB-0036-2	7
WEB-5500	7
WEB-5522	7
WEB-5523	8
WEB-5525	8
WEB-5538	8
WEB-5542	8
WEB-5545	8
WEB-5546	8
WEB-5550	9
WEB-5553	9
WEB-5556	9
WEB-5563	9
WEB-5567	9
WEB-5569	9

WEB-5573	10
WEB-5576	10
WEB-5581	10
WEB-5582	10
WEB-5583	10
WEB-5603	10
WEB-5607	11
WEB-5608	11
WEB-5622	11
WEB-5627	11
WEB-5635	11
WEB-5640	11
WEB-5642	12
WEB-5651	12
WEB-5658	12
WEB-5661	12
WEB-5662	12
WEB-5663	12
WEB-5672	13
WEB-5674	13
WEB-5680	13
WEB-5752	13
WEB-5777	13
WEB-5779	13
WEB-5798	14
WEB-5801	14
CONTACTS	15
Contact details	15
Telephones	15

Office hours	15
Address	15

SPECIFICATIONS

Overview

The 2018 Viking 68C, "Wonder," is turn-key and ready to fish. The professionally maintained 68' boasts custom storage, an Electrosea system, vast electronics package, Seakeeper 26, comfortable living space and additional upgrades completed in late 2021. In addition to its impressive features, the boat has low hours coming in at only 987.

Wonder's Haze Grey hull paired with her exterior features make her a classic head turner. The faux teak toe rails, teak cockpit deck, and teak cockpit covering boards function not only to reduce glare but add to the classic look of the boat.

Wonder is powered by MTU Series 2000 M96L 1945 mhp engines and will cruise comfortably in the mid 30-knot range. To learn more please contact listing agent.

Basic Information

Category: Sport Fisherman

Model Year: 2018

Year Built: 2018

Country: United States

Dimensions

LOA: 68' 7" (20.9mm)

Speed, Capacities and Weight

Cruise Speed: 30 Knots Kts. (35 MPH)

Fuel Capacity: 2060 Gal Gallons

Accommodations

Total Cabins: 4

Total Heads: 4

Hull and Deck Information

Hull Material: Fiberglass

Hull Color: Haze Grey

Engine Information

Engines: 2

Manufacturer: MTU

Engine Type: Inboard

Fuel Type: Diesel

PHOTOS

WEB-0017



WEB-0026-2



WEB-0036-2



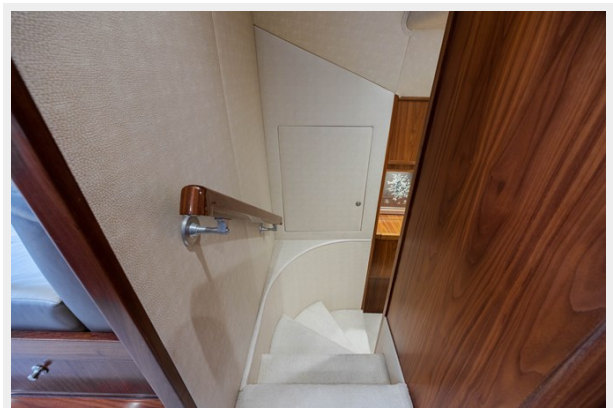
WEB-5481



WEB-5500



WEB-5522



WEB-5523



WEB-5525



WEB-5538



WEB-5542



WEB-5545



WEB-5546



WEB-5550



WEB-5553



WEB-5556



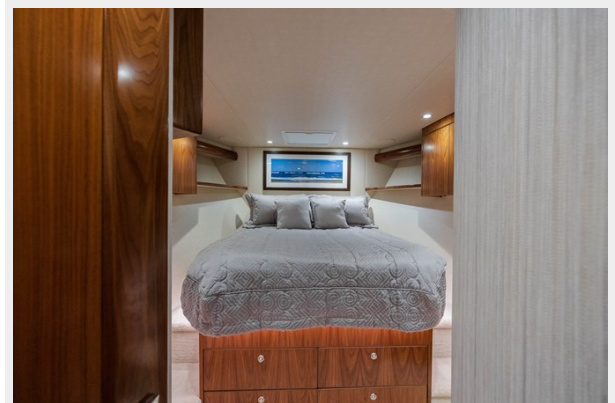
WEB-5563



WEB-5567



WEB-5569



WEB-5573



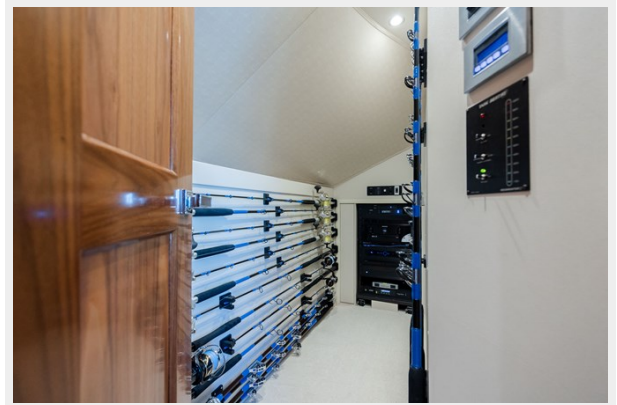
WEB-5576



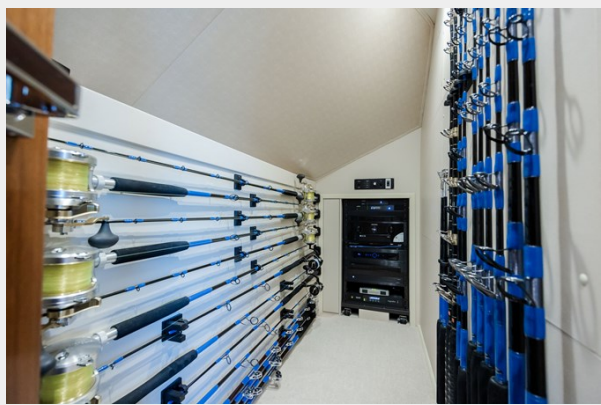
WEB-5581



WEB-5582



WEB-5583



WEB-5603



WEB-5607



WEB-5608



WEB-5622



WEB-5627



WEB-5635



WEB-5640



WEB-5642



WEB-5651



WEB-5658



WEB-5661



WEB-5662



WEB-5663



WEB-5672



WEB-5674



WEB-5680



WEB-5752



WEB-5777



WEB-5779



WEB-5798



WEB-5801



CONTACTS

Andrey Shestakov, leading yacht broker of the sales department of Shestakov Yacht Sales Inc. Shestakov Yacht Sales Inc., the official representative of the Miami/Fort Lauderdale FL headquarters.

Contact details

Email: andrey@shestakovyachtsales.com

Web: shestakovyachtsales.com/en/

Telephones

USA: +1(954)274-4435

Office hours

Monday – Saturday: **9:00 - 21:00** EDT

Sunday: **closed**

Address



Harbour Towne Marina, 850 NE 3rd St,
STE 213, Dania, FL 33004