

MAROON — RIVA



Builder: RIVA

Year Built: 2017

Model: Motor Yacht

Price: PRICE ON APPLICATION

Location: Spain

LOA: 88' 1" (26.84m)

Beam: 20.63

Min Draft: 6' (1.82m)

Cruise Speed: 24 Knots Kts. (28 MPH)

Max Speed: 40 Knots Kts. (46 MPH)

Our experienced yacht broker, Andrey Shestakov, will help you choose and buy a yacht that best suits your needs **MAROON — RIVA** from our catalogue. Presently, at Shestakov Yacht Sales Inc., we have a wide variety of yachts available on our sale's list. We also work in close contact with all the big yacht manufacturers from all over the world.

If you would like to buy a yacht **MAROON — RIVA** or would like help answering any questions concerning purchasing, selling or chartering a yacht, please call **+1(954)274-4435**

TABLE OF CONTENTS

TABLE OF CONTENTS	2
SPECIFICATIONS	3
Overview	3
Basic Information	3
Dimensions	3
Speed, Capacities and Weight	4
Accommodations	4
Hull and Deck Information	4
Engine Information	4
PHOTOS	5
CONTACTS	15
Contact details	15
Telephones	15
Office hours	15
Address	15

SPECIFICATIONS

Overview

Built in 2017, the Riva 88 Domino Super MAROON is in immaculate condition and is ready to cruise with a new owner today. As a RIVA yacht, she attracts all the right attention and will stand the test of time. The yacht's various exterior deck spaces are all well-connected to the indoors as part of a stylish seamless design. Once inside, you will find four guest cabins that can sleep up to nine guests, including one master suite. A VIP cabin, a convertible twin or double cabin, and a twin cabin with an additional Pullman berth make up the remaining accommodation, and with 4 dedicated crew, you can expect excellent levels of service. MAROON was a highly specified build when her owner purchased her from the famous Riva shipyard. The original brief included items such as custom paint, two gyro stabilisers and upgraded engines which allow her to reach speeds of up to 40 knots. This is a stylish sports yacht that was made to maximise the level of enjoyment that can be had on the water. Thanks to the hydraulic bathing platform and the Williams tender and Sea-Doo stored in the yacht's very own garage, you can be in the water zooming off towards the horizon almost immediately after dropping anchor in a beautiful bay. MAROON is a true Riva icon that any potential buyer would be proud to own.

Key features:- Highly specified RIVA 88 Domino Super- Zero-speed gyro stabiliser- VAT paid in Malta- Under 1,000 hours on main engines- One owner since delivery- Stunning styling with a touch of class as you would expect from a RIVA

Basic Information

Category: Motor Yacht

Model Year: 2017

Year Built: 2017

Country: Spain

Dimensions

LOA: 88' 1" (26.84mm)

LWL: 70' 4" (21.42mm)

Beam: 20.63

Min Draft: 6' (1.82mm)

Speed, Capacities and Weight

Cruise Speed: 24 Knots Kts. (28 MPH)

Max Speed: 40 Knots Kts. (46 MPH)

Gross Tonnage: 122 Pounds

Water Capacity: 900 Gallons

Holding Tank: 174.35 Gal Gallons

Fuel Capacity: 1981.29 Gal Gallons

Accommodations

Total Cabins: 4

Total Berths: 7

Sleeps: 9

Total Heads: 4

Crew Cabin: 4

Crew Berths: 4

Crew Heads: 1

Hull and Deck Information

Hull Material: GRP

Hull Configuration: Planing

Hull Color: Metallic Grey

Hull Designer: Ferretti Group

Exterior Designer: Mauro Micheli – Officina Italiana Design

Interior Designer: Mauro Micheli – Officina Italiana Design

Engine Information

Engines: 2

Manufacturer: MTU

Engine Type: Inboard

Fuel Type: Diesel

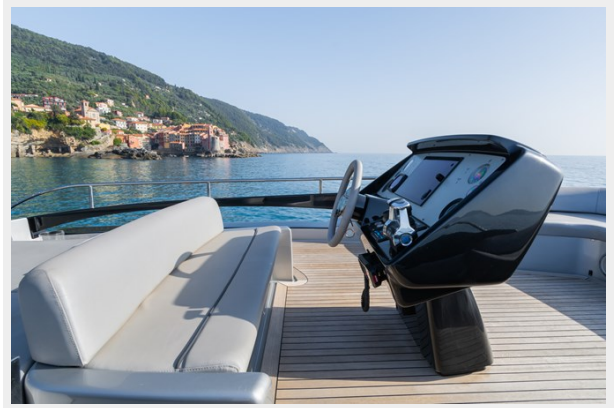
PHOTOS





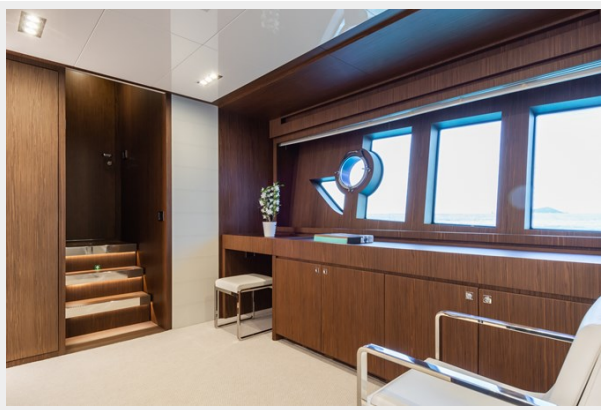
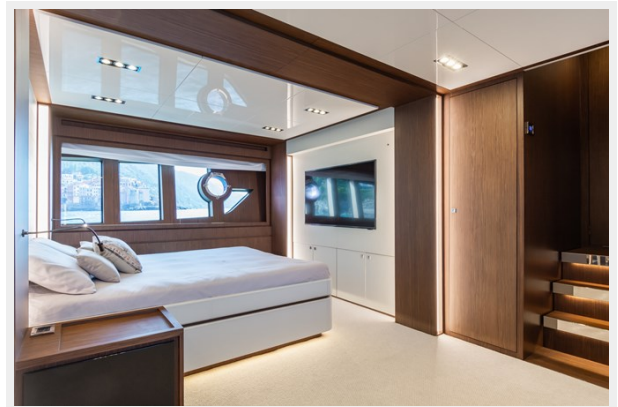




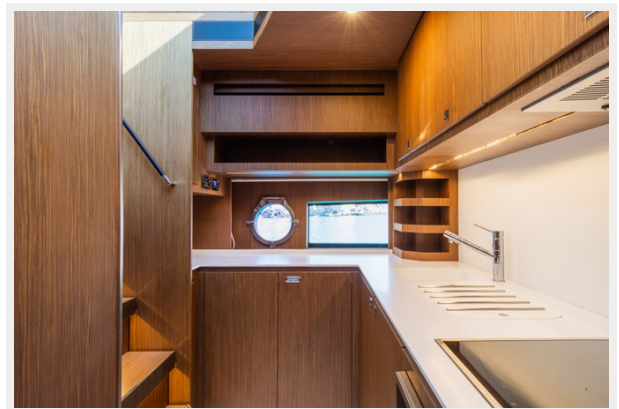
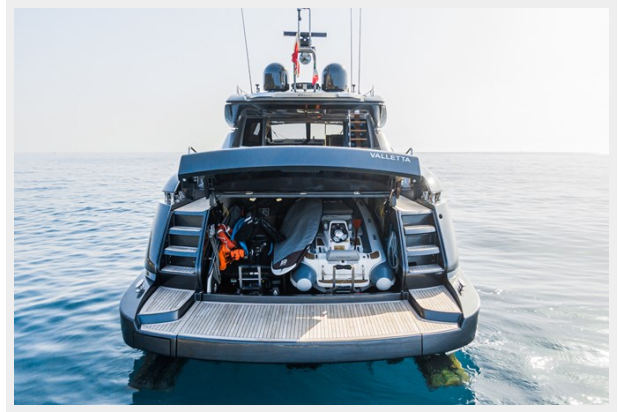












CONTACTS

Andrey Shestakov, leading yacht broker of the sales department of Shestakov Yacht Sales Inc. Shestakov Yacht Sales Inc., the official representative of the Miami/Fort Lauderdale FL headquarters.

Contact details

Email: andrey@shestakovyachtsales.com

Web: shestakovyachtsales.com/en/

Telephones

USA: +1(954)274-4435

Office hours

Monday – Saturday: **9:00 - 21:00** EDT

Sunday: **closed**

Address



Harbour Towne Marina, 850 NE 3rd St,
STE 213, Dania, FL 33004