

DORCAS ANNE — DEFEVER



Builder: DEFEVER

Year Built: 1979

Model: Trawler Yacht

Price: PRICE ON APPLICATION

Location: United States

LOA: 43' (13.11mm)

Beam: 14

Max Draft: 4' 5" (1.35mm)

Cruise Speed: 7 Knots Kts. (8 MPH)

Max Speed: 10 Knots Kts. (12 MPH)

Our experienced yacht broker, Andrey Shestakov, will help you choose and buy a yacht that best suits your needs **Dorcas Anne — DEFEVER** from our catalogue. Presently, at Shestakov Yacht Sales Inc., we have a wide variety of yachts available on our sale's list. We also work in close contact with all the big yacht manufacturers from all over the world.

If you would like to buy a yacht **Dorcas Anne — DEFEVER** or would like help answering any questions concerning purchasing, selling or chartering a yacht, please call **+1(954)274-4435**

TABLE OF CONTENTS

TABLE OF CONTENTS	2
SPECIFICATIONS	6
Overview	6
Basic Information	6
Dimensions	6
Speed, Capacities and Weight	6
Accommodations	6
Hull and Deck Information	6
Engine Information	7
PHOTOS	8
2_2787201_001_dorcac_ann_1979_defever_43	8
1_2787201_003_dorcac_ann_1979_defever_43	8
3_2787201_002_dorcac_ann_starboard_bow	8
4_2787201_004_drcac_ann_port_stern	8
6_2787201_007_dorcac_ann_stern_with_tender	8
5_2787201_005_dorcac_ann_bow	8
7_2787201_1003_dorcac_ann_starboard_sidedeck	9
8_2787201_1004_dorcac_ann_starboard_side_door	9
9_2787201_1005_dorcac_ann_foredeck	9
10_2787201_1006_dorcac_ann_foredeck	9
12_2787201_1008_dorcac_ann_anchor_gear	9
11_2787201_1007_dorcac_ann_foredeck	9
14_2787201_1010_dorcac_ann_foredeck	10
13_2787201_1009_dorcac_ann_windlass	10
17_2787201_1021_dorcac_ann_sundeck	10
18_2787201_1022_dorcac_ann_whicker_set	10
19_2787201_1023_dorcac_ann_sundeck	10
20_2787201_1024_dorcac_ann_whicker_set_starboard	10

22_2787201_1032_dorcas_ann_flybridge_port_view	10
21_2787201_1025_dorcas_ann_sundeck_forward_view	10
24_2787201_1036_flybridge_starboard_view	11
23_2787201_1034_dorcas_ann_flybridge_port_seating	11
26_2787201_1041_dorcas_ann_companionway	11
25_2787201_1038_dorcas_ann_flybridge_starboard_seating	11
28_2787201_1044_dorcas_ann_saloon_wide_angle	11
27_2787201_1043_dorcas_ann_saloon_forward_view	11
29_2787201_1045_dorcas_ann_saloon_aft_view	11
30_2787201_1046_dorcas_ann_saloon	11
31_2787201_1047_dorcas_ann_lower_helm	12
32_2787201_1048_dorcas_ann_lower_helm_controls	12
34_2787201_1050_dorcas_ann_galley	12
33_2787201_1049_dorcas_ann_saloon_tv	12
36_2787201_1052_dorcas_ann_galley	12
35_2787201_1051_dorcas_ann_galley	12
37_2787201_1053_dorcas_ann_galley	13
38_2787201_1054_galley_cook_top	13
40_2787201_1056_dorcas_ann_galley	13
39_2787201_1055_galley_cook_top	13
41_2787201_1057_dorcas_ann_coffee_maker	13
42_2787201_1058_dorcas_ann_microwave	13
44_2787201_1060_dorcas_ann_refrigerator	14
43_2787201_1059_dorcas_ann_microwave	14
45_2787201_1061_dorcas_ann_refrigerator	14
46_2787201_1062_dorcas_ann_dishwasher	14
47_2787201_1063_dorcas_ann_dishwasher	14
48_2787201_1064_dorcas_ann_stovetop_hood	14
49_2787201_1071_dorcas_ann_port_saloon	15

50_2787201_1071_dorcas_ann_starboard_salon	15
52_2787201_1073_dorcas_ann_salon_table	15
51_2787201_1072_dorcas_ann_salon_setee	15
53_2787201_1081_dorcas_ann_foreward_cabin_entrance	15
54_2787201_1082_dorcas_ann_v_berth	15
55_2787201_1083_dorcas_ann_v_berth_and_guest_head	15
56_2787201_1084_dorcas_ann_v_berth_starboard	15
58_2787201_1086_dorcas_ann_v_berth	16
57_2787201_1085_dorcas_ann_v_berth_port	16
59_2787201_1087_dorcas_ann_guest_head_wide	16
60_2787201_1088_dorcas_ann_guest_head	16
62_2787201_1091_dorcas_ann_engine_room_entrance	16
61_2787201_1089_dorcas_ann_guest_head	16
64_2787201_1093_dorcas_ann_engine_room_forward	17
63_2787201_1092_dorcas_ann_engine_room	17
66_2787201_1095_dorcas_ann_port_engine	17
65_2787201_1094_dorcas_ann_starboard_engine	17
67_2787201_1096_dorcas_ann_starboard_fuel_tank	17
68_2787201_1097_dorcas_ann_port_fuel_tank	17
69_2787201_1098_dorcas_ann_generator	17
70_2787201_1099_dorcas_ann_battery_chargers_and_inverter	17
72_2787201_1101_dorcas_ann_washer_dryer	18
71_2787201_1100dorcas_ann_batteries	18
74_2787201_1205_dorcas_ann_tender_1	18
73_2787201_1201_dorcas_ann_on_the_hard	18
75_2787201_1205_dorcas_ann_tender_2	18
CONTACTS	19
Contact details	19
Telephones	19

Office hours	19
Address	19

SPECIFICATIONS

Overview

Dorcias Ann is an excellent example of the classic design DeFevers are known for. Heavily constructed on a solid fiberglass displacement hull, the DeFever 43 is a flush deck design with the aft deck and side decks on the same level. The result is a boat with slightly higher freeboard, very spacious aft deck area and large, full width master stateroom. **Dorcias Ann** has just been refit with new fuel tanks, batteries and wiring and much more. Other recent updates include fully enclosed flybridge and sundeck, Northern Lights generator, full size washer dryer, top of the line galley appliances including dishwasher, stainless steel water heater and vacuflush heads. The current owners have enjoyed cruising the East coast and Chesapeake Bay and have kept her well maintained. They have worked hard to finish the most recent refit and there are still a few things that will need to be done so they lowered the price dramatically to sell her now as is. Please see all of the listing for full details and list of amenities and equipment.

Basic Information

Category: Trawler Yacht

Model Year: 1979

Year Built: 1979

Country: United States

Dimensions

LOA: 43' (13.11mm)

Beam: 14

Max Draft: 4' 5" (1.35mm)

Speed, Capacities and Weight

Cruise Speed: 7 Knots Kts. (8 MPH)

Max Speed: 10 Knots Kts. (12 MPH)

Water Capacity: 250 Gallons

Holding Tank: 50 Gal Gallons

Fuel Capacity: 600 Gal Gallons

Accommodations

Total Cabins: 2

Sleeps: 4

Total Heads: 2

Hull and Deck Information

Hull Material: Fiberglass

Engine Information

Engines: 2

Manufacturer: Ford Lehman

Engine Type: Inboard

Fuel Type: Diesel

PHOTOS

1_2787201_003_dorcas_ann_1979_defever_43



2_2787201_001_dorcas_ann_1979_defever_43



3_2787201_002_dorcas_ann_starboard_bow



4_2787201_004_drcas_ann_port_stern



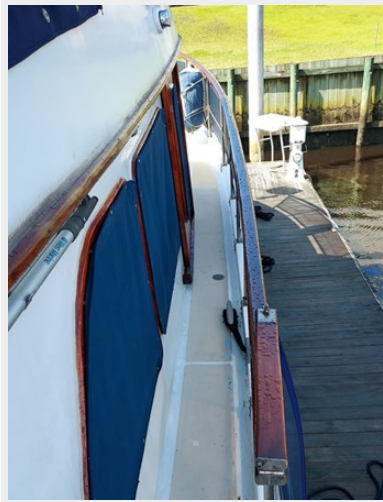
5_2787201_005_dorcas_ann_bow



6_2787201_007_dorcas_ann_stern_with_tender



7_2787201_1003_dorcas_ann_starboard_sidedeck



8_2787201_1004_dorcas_ann_starboard_side_door



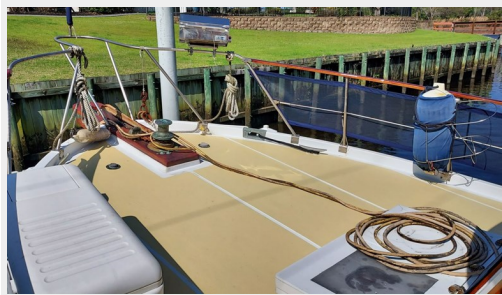
9_2787201_1005_dorcas_ann_foredeck



10_2787201_1006_dorcas_ann_foredeck



11_2787201_1007_dorcas_ann_foredeck



12_2787201_1008_dorcas_ann_anchor_gear



13_2787201_1009_dorcas_ann_windlass



14_2787201_1010_dorcas_ann_foredeck



17_2787201_1021_dorcas_ann_sundeck



18_2787201_1022_dorcas_ann_whicker_set



19_2787201_1023_dorcas_ann_sundeck



20_2787201_1024_dorcas_ann_whicker_set_starboard



21_2787201_1025_dorcas_ann_sundeck_forward_view 22_2787201_1032_dorcas_ann_flybridge_port_view



23_2787201_1034_dorcas_ann_flybridge_port_seating



24_2787201_1036_flybridge_starboard_view



26_2787201_1041_dorcas_ann_companionway



25_2787201_1038_dorcas_ann_flybridge_starboard_seating



27_2787201_1043_dorcas_ann_salon_forward_view



28_2787201_1044_dorcas_ann_salon_wide_angle



29_2787201_1045_dorcas_ann_salon_aft_view



30_2787201_1046_dorcas_ann_salon



31_2787201_1047_dorcas_ann_lower_helm



32_2787201_1048_dorcas_ann_lower_helm_controls



33_2787201_1049_dorcas_ann_salon_tv



34_2787201_1050_dorcas_ann_galley



36_2787201_1052_dorcas_ann_galley

35_2787201_1051_dorcas_ann_galley



37_2787201_1053_dorcas_ann_galley



38_2787201_1054_galley_cook_top



39_2787201_1055_galley_cook_top



40_2787201_1056_dorcas_ann_galley



41_2787201_1057_dorcas_ann_coffee_maker



42_2787201_1058_dorcas_ann_microwave



43_2787201_1059_dorcas_ann_microwave



44_2787201_1060_dorcas_ann_refrigerator



45_2787201_1061_dorcas_ann_refrigerator



46_2787201_1062_dorcas_ann_dishwasher



47_2787201_1063_dorcas_ann_dishwasher



48_2787201_1064_dorcas_ann_stovetop_hood



49_2787201_1071_dorcas_ann_port_salon



50_2787201_1071_dorcas_ann_starboard_salon



51_2787201_1072_dorcas_ann_salon_setee



52_2787201_1073_dorcas_ann_salon_table



53_2787201_1081_dorcas_ann_foreward_cabin_entrance



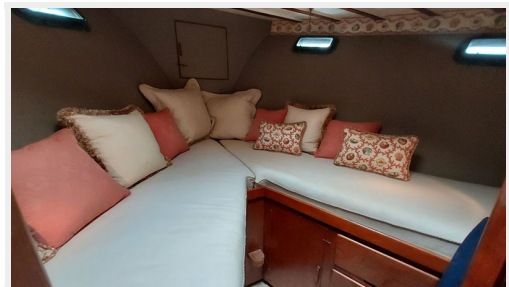
54_2787201_1082_dorcas_ann_v_berth



55_2787201_1083_dorcas_ann_v_berth_and_guest_head



56_2787201_1084_dorcas_ann_v_berth_starboard



58_2787201_1086_dorcas_ann_v_berth



57_2787201_1085_dorcas_ann_v_berth_port



59_2787201_1087_dorcas_ann_guest_head_wide



60_2787201_1088_dorcas_ann_guest_head



61_2787201_1089_dorcas_ann_guest_head



62_2787201_1091_dorcas_ann_engine_room_entrance



63_2787201_1092_dorcas_ann_engine_room



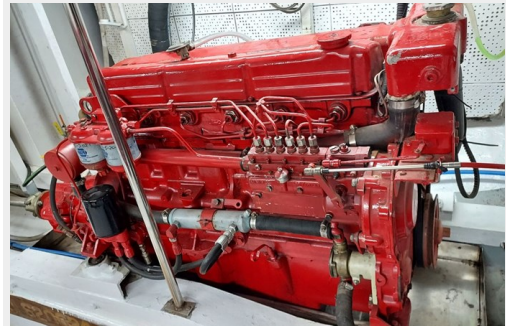
64_2787201_1093_dorcas_ann_engine_room_forward



65_2787201_1094_dorcas_ann_starboard_engine



66_2787201_1095_dorcas_ann_port_engine



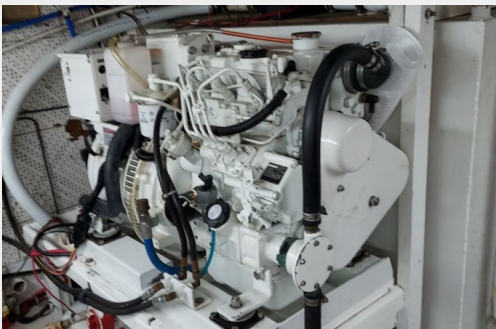
67_2787201_1096_dorcas_ann_starboard_fuel_tank



68_2787201_1097_dorcas_ann_port_fuel_tank



69_2787201_1098_dorcas_ann_generator



70_2787201_1099_dorcas_ann_battery_chargers_and_inverter



72_2787201_1101_dorcas_ann_washer_dryer



71_2787201_1100dorcas_ann_batteries



73_2787201_1201_dorcas_ann_on_the_hard



74_2787201_1205_dorcas_ann_tender_1



75_2787201_1205_dorcas_ann_tender_2



CONTACTS

Andrey Shestakov, leading yacht broker of the sales department of Shestakov Yacht Sales Inc. Shestakov Yacht Sales Inc., the official representative of the Miami/Fort Lauderdale FL headquarters.

Contact details

Email:
andrey@shestakovyachtsales.com

Web: shestakovyachtsales.com/en/

Telephones

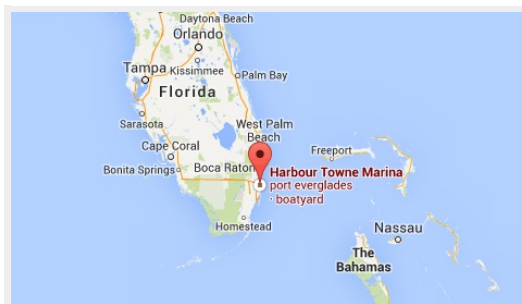
USA: +1(954)274-4435

Office hours

Monday – Saturday: **9:00 - 21:00 EDT**

Sunday: **closed**

Address



Harbour Towne Marina, 850 NE 3rd St,
STE 213, Dania, FL 33004