

RELIANT — MYSTIC POWERBOATS INC



Builder: MYSTIC POWERBOATS INC

Year Built: 1979

Model: Cutter

Price: PRICE ON APPLICATION

Location: United States

LOA: 30' (9.14mm)

Beam: 10.25

Max Draft: 5' (1.52mm)

Our experienced yacht broker, Andrey Shestakov, will help you choose and buy a yacht that best suits your needs **Reliant — MYSTIC POWERBOATS INC** from our catalogue. Presently, at Shestakov Yacht Sales Inc., we have a wide variety of yachts available on our sale's list. We also work in close contact with all the big yacht manufacturers from all over the world.

If you would like to buy a yacht **Reliant — MYSTIC POWERBOATS INC** or would like help answering any questions concerning purchasing, selling or chartering a yacht, please call **+1(954)274-4435**

TABLE OF CONTENTS

TABLE OF CONTENTS	2
SPECIFICATIONS	5
Overview	5
Basic Information	5
Dimensions	6
Speed, Capacities and Weight	6
Accommodations	6
Hull and Deck Information	6
Engine Information	6
PHOTOS	7
1_2793252_	7
2_2793252_	7
3_2793252_	7
4_2793252_	7
5_2793252_	8
6_2793252_	8
7_2793252_	8
8_2793252_	8
9_2793252_front_deck	8
10_2793252_starboard_side_deck	8
11_2793252_port_side_deck	9
12_2793252_front_deck	9
13_2793252_cockpit	9
14_2793252_	9
15_2793252_	9
16_2793252_cockpit	9
17_2793252_	10
18_2793252_companionway_access	10

19_2793252_galley	10
20_2793252_salon_settee	10
21_2793252_salon	10
22_2793252_starboard_salon_settee	10
23_2793252_cabin_v_berth	11
24_2793252_	11
25_2793252_cabin_hatch	11
26_2793252_	11
27_2793252_salon	11
28_2793252_salon	11
29_2793252_	12
30_2793252_control_panel	12
31_2793252_two_burners	12
32_2793252_galley_sink	12
33_2793252_	12
34_2793252_	12
35_2793252_	13
36_2793252_access_to_private_headsink	13
37_2793252_head	13
38_2793252_	13
39_2793252_	13
40_2793252_	13
41_2793252_	14
42_2793252_	14
43_2793252_	14
44_2793252_	14
45_2793252_	14
46_2793252_	14
47_2793252_	15

48_2793252_	15
49_2793252_	15
50_2793252_	15
51_2793252_	15
52_2793252_	15
53_2793252_	16
54_2793252_	16
55_2793252_	16
56_2793252_	16
57_2793252_	16
58_2793252_	16
59_2793252_	17
60_2793252_	17
CONTACTS	18
Contact details	18
Telephones	18
Office hours	18
Address	18

SPECIFICATIONS

Overview

Classic New England design that's much more modern below the waterline. Reliant is a Mystic 30 cutter, designed and built in Connecticut by Legnos, a company known for its fiberglass work.

Reliant was recently single handed from Virginia down to Miami, she is equally at home clearing all the fixed bridges of the intercoastal waterway as she is making long runs on the outside.

Reliant features a fiberglass hull and a fin keel, her hull design will allow her to motor at 6kts on only 15hp worth of diesel power with 25 gallon of fuel on tap, under sail she preforms very well with her optimized yankee, staysail and main flying it will not take much wind for her to break 6 knots, and with fully tailing lewmar bronze wrenches, stackpack and furling yankee single handing is no issue, and with her 5' fin keel she can sail into the wind with ease.

When the weather gets stronger, the reef marks in the yankee will be a good aid, as weather progresses furling the yankee and reefing the main will allow you to handle the weather with ease, and unlike many boats her size isn't relying on a wheel driven auto pilot, Reliant has a keyed rudder shaft, stainless mount and a raymarine type 1 liner actuator for her below deck auto pilot, which will be running off a lithium battle born battery, Bluetooth Victron smart AC- DC charger, Victron solar controller and battery monitor included just waiting to be installed.

Located in Hollywood, Florida.

Basic Information

Category: Cutter

Model Year: 1979

Year Built: 1979

Country: United States

Dimensions

LOA: 30' (9.14mm)

Beam: 10.25

Max Draft: 5' (1.52mm)

Speed, Capacities and Weight

Water Capacity: 35 Gallons

Holding Tank: 35 Gal Gallons

Fuel Capacity: 25 Gal Gallons

Accommodations

Total Cabins: 1

Sleeps: 3

Total Heads: 1

Hull and Deck Information

Hull Material: Fiberglass

Engine Information

Engines: 1

Manufacturer: Yanmar

Engine Type: Inboard

Fuel Type: Diesel

PHOTOS

1_2793252_



2_2793252_



3_2793252_



4_2793252_



5_2793252_



6_2793252_



7_2793252_



8_2793252_



9_2793252_front_deck



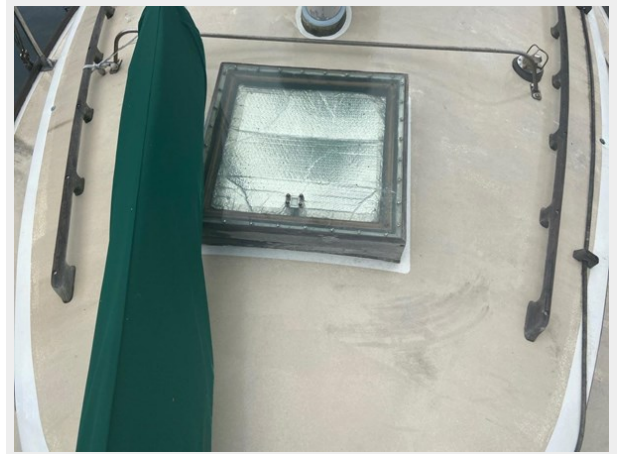
10_2793252_starboard_side_deck



11_2793252_port_side_deck



12_2793252_front_deck



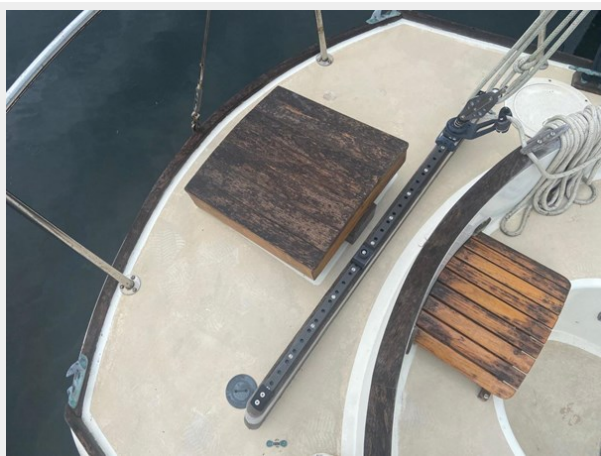
13_2793252_cockpit



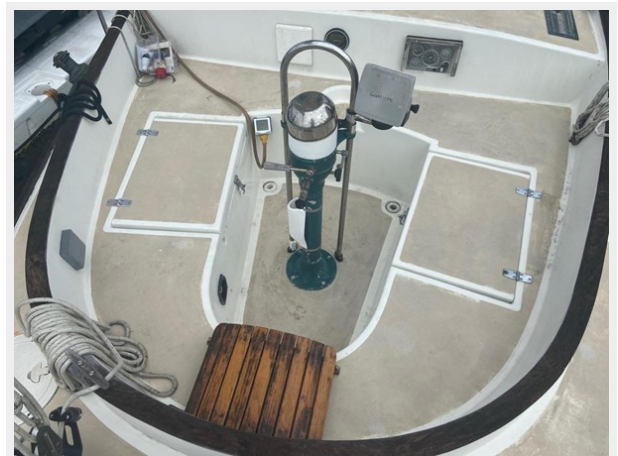
14_2793252_



15_2793252_



16_2793252_cockpit



17_2793252_



18_2793252_companionway_access



19_2793252_galley



20_2793252_salon_settee



21_2793252_salon



22_2793252_starboard_salon_settee



23_2793252_cabin_v_berth



24_2793252_



25_2793252_cabin_hatch



26_2793252_



27_2793252_salon



28_2793252_salon



29_2793252_



30_2793252_control_panel



31_2793252_two_burners



32_2793252_galley_sink



33_2793252_



34_2793252_



35_2793252_



36_2793252_access_to_private_headsink



37_2793252_head



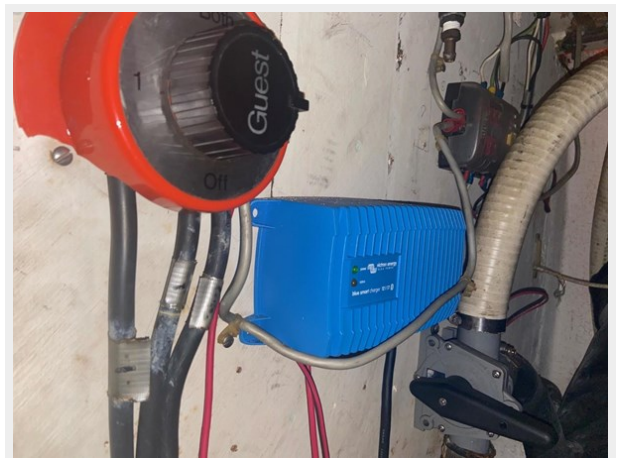
38_2793252_



39_2793252_



40_2793252_



41_2793252_



42_2793252_



43_2793252_



44_2793252_



45_2793252_



46_2793252_



47_2793252_



48_2793252_



49_2793252_



50_2793252_



51_2793252_



52_2793252_



53_2793252_



54_2793252_



55_2793252_



56_2793252_



57_2793252_



58_2793252_



59_2793252_



60_2793252_



CONTACTS

Andrey Shestakov, leading yacht broker of the sales department of Shestakov Yacht Sales Inc. Shestakov Yacht Sales Inc., the official representative of the Miami/Fort Lauderdale FL headquarters.

Contact details

Email: andrey@shestakovyachtsales.com

Web: shestakovyachtsales.com/en/

Telephones

USA: +1(954)274-4435

Office hours

Monday – Saturday: **9:00 - 21:00** EDT

Sunday: **closed**

Address



Harbour Towne Marina, 850 NE 3rd St,
STE 213, Dania, FL 33004