

## ANDIAMO — AZIMUT YACHTS



**Builder:** AZIMUT YACHTS

**Year Built:** 2012

**Model:** Motor Yacht

**Price:** PRICE ON APPLICATION

**Location:** United States

**LOA:** 105' (32mm)

**Beam:** 24.25

**Max Draft:** 6' 6" (1.98mm)

**Cruise Speed:** 12.5 Knots Kts. (14 MPH)

**Max Speed:** 24 Knots Kts. (28 MPH)

Our experienced yacht broker, Andrey Shestakov, will help you choose and buy a yacht that best suits your needs **ANDIAMO — AZIMUT YACHTS** from our catalogue. Presently, at Shestakov Yacht Sales Inc., we have a wide variety of yachts available on our sale's list. We also work in close contact with all the big yacht manufacturers from all over the world.

If you would like to buy a yacht **ANDIAMO — AZIMUT YACHTS** or would like help answering any questions concerning purchasing, selling or chartering a yacht, please call **+1(954)274-4435**

# TABLE OF CONTENTS

TABLE OF CONTENTS	2
SPECIFICATIONS	5
Overview	5
Basic Information	5
Dimensions	5
Speed, Capacities and Weight	5
Accommodations	6
Hull and Deck Information	6
Engine Information	6
PHOTOS	7
Main Salon	7
Bar/Main Salon	7
Main Salon	7
Main salon looking aft	7
Port sidedeck	7
main deck VIP cabin	7
Main Deck VIP	8
Main Deck port side	8
Main deck interior	8
Master	8
master study	8
master	8
master shower	9
master head	9
Master stateroom	9
Lower VIP	9
Lower VIP	9
Lower VIP Head	9

Starboard Twin stateroom	10
StarboardvTwin Stateroom	10
Port Twin Stateroom	10
Twin head	10
Aftdeck	10
Aftdeck	10
Aftdeck	11
Aftdeck	11
Flybridge	11
Flybridge deck	11
fly dining table	11
Flybridge bar	11
Sunbed	12
Sunbed	12
Flybridge	12
Helm	12
Helm	12
Wheelhouse	12
Wheelhouse helm	13
Main deck corridor	13
Galley	13
Galley	13
Wheelhouse	13
Port side deck	13
Foredeck lounge	14
foredeck	14
Underway	14
Ariel profile	14
overhead	14

---

Transom/Garage	14
CONTACTS	15
Contact details	15
Telephones	15
Office hours	15
Address	15

---

# SPECIFICATIONS

---

## Overview

---

In Fort Lauderdale, the Azimut Grande 105 ANDIAMO has all the amenities and options of a 130-foot yacht. Her gorgeous contemporary 5-stateroom layout offers ample space for entertaining and relaxation. She has a full-time professional Captain and crew and has been maintained to the highest standards. She is available to view in Fort Lauderdale with duty paid.

Features: Beautiful contemporary interior design  
Zero speed stabilizers  
New VSAT Internet  
Tender garage  
\$250K in recent services and upgrades

## Basic Information

---

**Category:** Motor Yacht

**Sub Category:** Flybridge

**Model Year:** 2012

**Year Built:** 2012

**Country:** United States

## Dimensions

---

**LOA:** 105' (32mm)

**Beam:** 24.25

**Max Draft:** 6' 6" (1.98mm)

## Speed, Capacities and Weight

---

**Cruise Speed:** 12.5 Knots Kts. (14 MPH)

**Cruise Speed Range:** 800

**Max Speed:** 24 Knots Kts. (28 MPH)

**Gross Tonnage:** 190 Pounds

**Water Capacity:** 660 Gallons

**Holding Tank:** 370 Gal Gallons

**Fuel Capacity:** 4350 Gal Gallons

---

## Accommodations

---

**Total Cabins:** 5

**Total Heads:** 5

---

## Hull and Deck Information

---

**Hull Material:** Fiberglass

**Deck Material:** Teak

**Hull Configuration:** Deep Vee

**Exterior Designer:** Stefano Ragini

---

## Engine Information

---

**Engines:** 2

**Manufacturer:** MTU

**Engine Type:** I/O

**Fuel Type:** Diesel

# PHOTOS

**Main Salon**



**Bar/Main Salon**



**Main Salon**



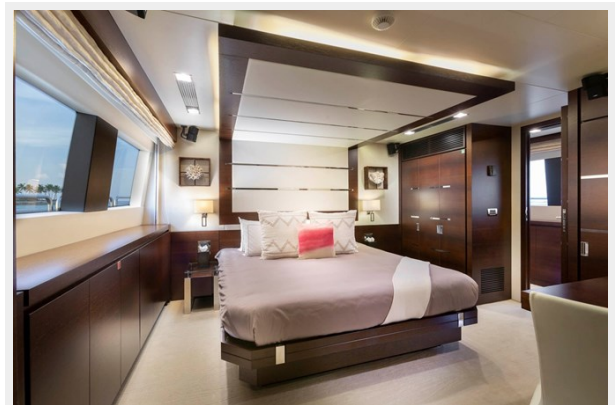
**Main salon looking aft**



**Port side deck**



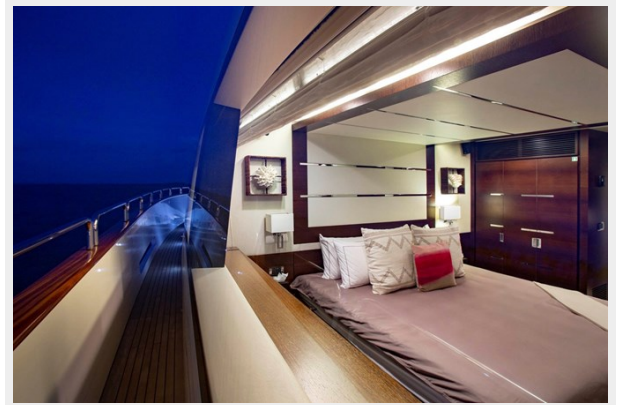
**main deck VIP cabin**



**Main Deck VIP**



**Main Deck port side**



**Main deck interior**



**Master**



**master study**



**master**

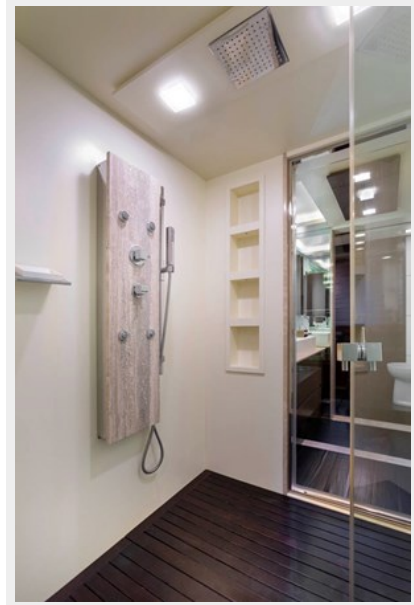




**master head**



**master shower**



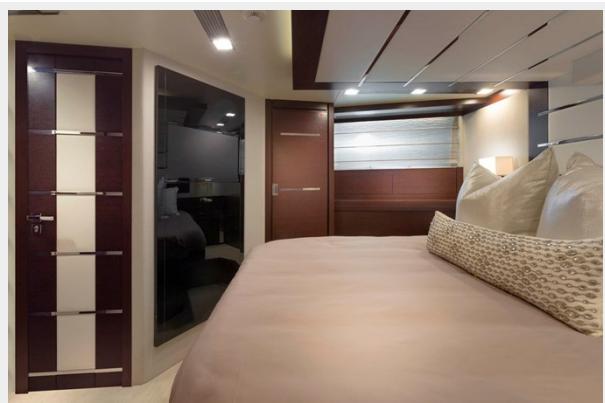
**Master stateroom**



**Lower VIP**



**Lower VIP**



**Lower VIP Head**



**Starboard Twin stateroom**



**StarboardvTwin Stateroom**



**Port Twin Stateroom**



**Twin head**



**Aftdeck**



**Aftdeck**



**Aftdeck**



**Aftdeck**



**Flybridge**



**Flybridge deck**



**fly dining table**



**Flybridge bar**



Sunbed



Sunbed



Flybridge



Helm



Helm



Wheelhouse



**Wheelhouse helm**



**Main deck corridor**



**Galley**



**Galley**



**Wheelhouse**



**Port side deck**



**Foredeck lounge**



**foredeck**



**Ariel profile**



**Underway**



**overhead**



**Transom/Garage**



---

# CONTACTS

---

Andrey Shestakov, leading yacht broker of the sales department of Shestakov Yacht Sales Inc. Shestakov Yacht Sales Inc., the official representative of the Miami/Fort Lauderdale FL headquarters.

---

## Contact details

---

Email: [andrey@shestakovyachtsales.com](mailto:andrey@shestakovyachtsales.com)

Web: [shestakovyachtsales.com/en/](http://shestakovyachtsales.com/en/)

---

## Telephones

---

USA: +1(954)274-4435

---

## Office hours

---

Monday – Saturday: **9:00 - 21:00** EDT

Sunday: **closed**

---

## Address

---



Harbour Towne Marina, 850 NE 3rd St,  
STE 213, Dania, FL 33004