

SQUANDO (COPY) — SHANNON



Builder: SHANNON

Year Built: 1999

Model: Cruising Sailboat

Price: PRICE ON APPLICATION

Location: United States

LOA: 43' (13.11mm)

Beam: 13

Min Draft: 4' 9" (1.45mm)

Max Draft: 8' 7" (2.62mm)

Our experienced yacht broker, Andrey Shestakov, will help you choose and buy a yacht that best suits your needs **SQUANDO (Copy) — SHANNON** from our catalogue. Presently, at Shestakov Yacht Sales Inc., we have a wide variety of yachts available on our sale's list. We also work in close contact with all the big yacht manufacturers from all over the world.

If you would like to buy a yacht **SQUANDO (Copy) — SHANNON** or would like help answering any questions concerning purchasing, selling or chartering a yacht, please call **+1(954)274-4435**

TABLE OF CONTENTS

TABLE OF CONTENTS	2
SPECIFICATIONS	5
Overview	5
Basic Information	5
Dimensions	5
Speed, Capacities and Weight	5
Accommodations	6
Hull and Deck Information	6
Engine Information	6
PHOTOS	7
Interior from Companionway	7
On Mooring	7
Saloon, Looking Fwd	7
Port Settee	7
Stbd. Settee	8
Saloon Table Extended	8
Looking Aft	8
Galley, Aft	8
Galley	9
Galley	9
Refrigeration and Stove	9
Owner's Cabin, Fwd.	9
Owner's Cabin, Port Side	10
Owner's V-berth with Filler	10
Storage, Fwd. Cabin	10
Owner's Storage, Joinery Detail	10
Fwd. Head	11
Passageway to Aft Cabin	11

Aft Cabin Double	11
Storage, Aft Cabin	11
Aft Head	12
Builder's Plaque	12
Nav Station	12
Raymarine AXIOM at Nav Station	12
Voltage Panel	13
Nav Instruments	13
Autopilot Control	13
VHF	13
Galley Controls	14
Stereo	14
AC Distribution Panel	14
DC Distribution Panel	14
Windlass	15
Foredeck	15
Deck, Fwd.	15
Deck, Looking Aft	15
Self-tacking Staysail/Traveler	16
Dorade	16
Dodger	16
Dodger	16
Stainless Hatches	17
Deck Detail	17
Rod Rigging	17
Cockpit, Fwd	17
New Sailing Instruments	18
Cockpit Sailing Instruments	18
Cockpit	18

Cockpit, Aft to Helm	18
Cockpit Table	19
Nav Pod	19
Electric Winch	19
Winch	19
VHF Remote	19
Centerboard Control	19
EPIRB	20
Safety Gear	20
Autopilot Remote	20
Engine	20
Fuel Manifold	21
Engine Hours	21
Genset	21
Generator Hours	21
Alternator	22
Inverter-Charger	22
Prop	22
Rudder	22
On Mooring	23
CONTACTS	24
Contact details	24
Telephones	24
Office hours	24
Address	24

SPECIFICATIONS

Overview

The Shannon 43 is a perfect couples' cruising yacht of hand-built pedigree. She features a large saloon and galley, great accommodation for guests, a versatile sail plan, protected cockpit and centerboard shoal-draft accessibility.

SQUANDO features a two-cabin, two-head layout with abundant storage. She is beautifully finished below in a raised-panel cherry interior with teak sole boards. The joinery work, finish and hardware detail are first class.

Well cared for by her owner, SQUANDO has benefited from many recent upgrades including Axiom series Raymarine electronics, "Black" Awlgrip topsides, Westerbeke generator, recent sail inventory and interior upholstery.

Basic Information

Category: Cruising Sailboat

Model Year: 1999

Year Built: 1999

Country: United States

Dimensions

LOA: 43' (13.11mm)

LWL: 30' (9.14mm)

Beam: 13

Min Draft: 4' 9" (1.45mm)

Max Draft: 8' 7" (2.62mm)

Speed, Capacities and Weight

Water Capacity: 150 Gallons

Holding Tank: 60 Gal Gallons

Fuel Capacity: 100 Gal Gallons

Accommodations

Total Cabins: 2

Hull and Deck Information

Hull Material: Fiberglass

Deck Material: Nonskid painted

Hull Configuration: Centerboard

Hull Color: Black

Hull Designer: Walter Schultz

Exterior Designer: Walter Schultz

Engine Information

Engines: 1

Manufacturer: Westerbeke

Engine Type: Inboard

Fuel Type: Diesel

PHOTOS

On Mooring



Interior from Companionway



Saloon, Looking Fwd



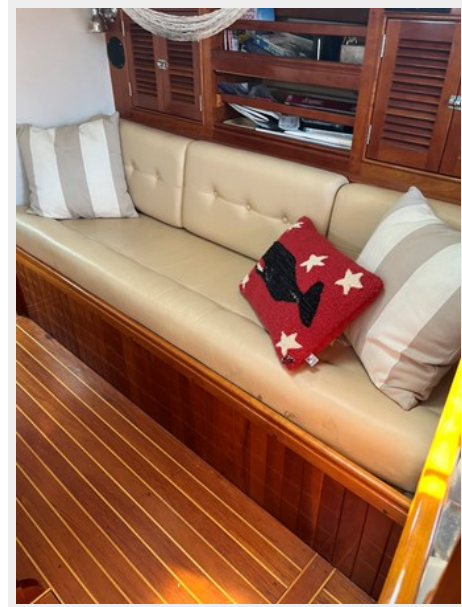
Port Settee



Saloon Table Extended



Stbd. Settee



Looking Aft



Galley, Aft



Galley



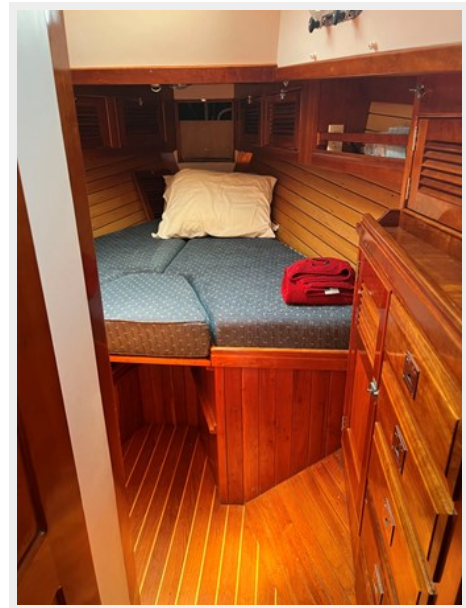
Galley



Refrigeration and Stove



Owner's Cabin, Fwd.



Owner's V-berth with Filler



Owner's Cabin, Port Side



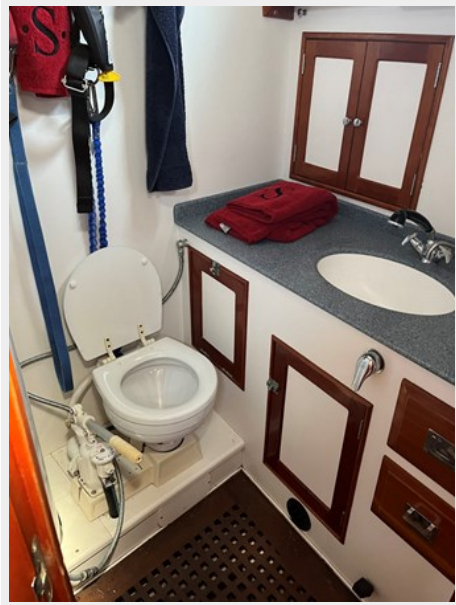
Owner's Storage, Joinery Detail



Storage, Fwd. Cabin



Fwd. Head



Passageway to Aft Cabin



Aft Cabin Double



Storage, Aft Cabin



Aft Head



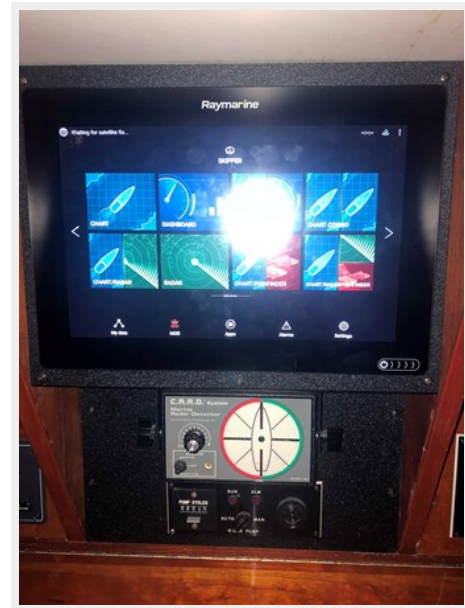
Builder's Plaque



Nav Station



Raymarine AXIOM at Nav Station



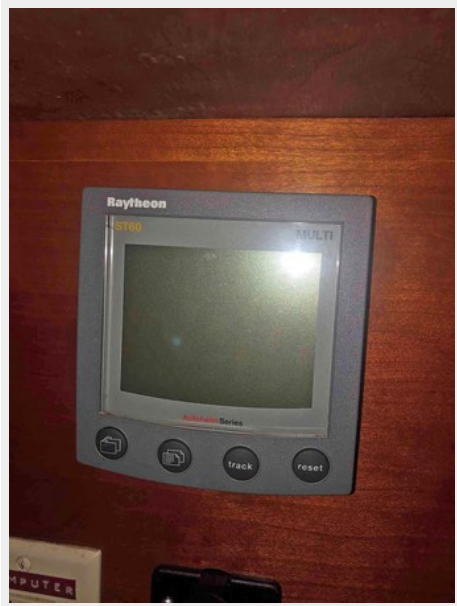
Voltage Panel



Nav Instruments



Autopilot Control



VHF



Galley Controls



Stereo



AC Distribution Panel



DC Distribution Panel



Windlass



Foredeck



Deck, Fwd.



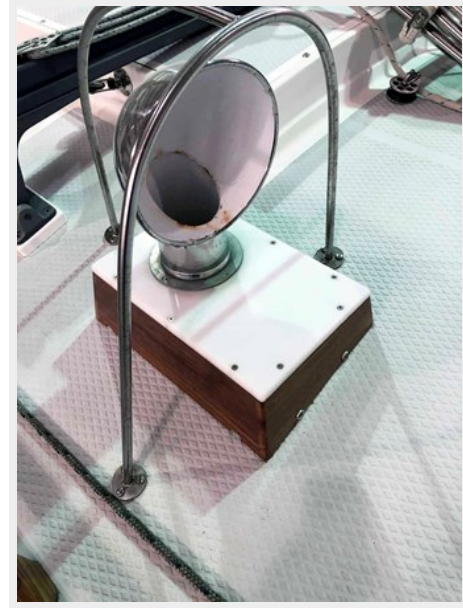
Deck, Looking Aft



Self-tacking Staysail/Traveler



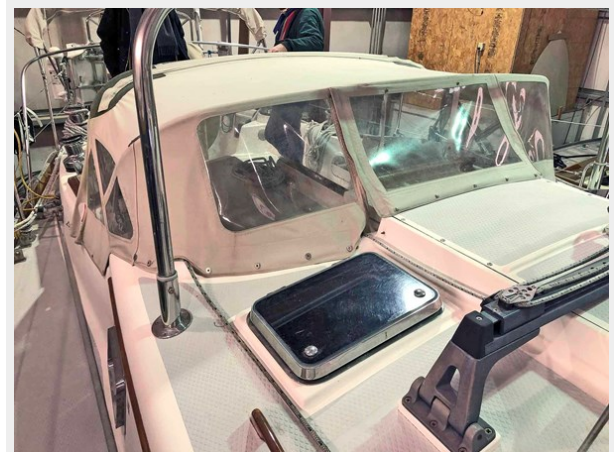
Dorade



Dodger



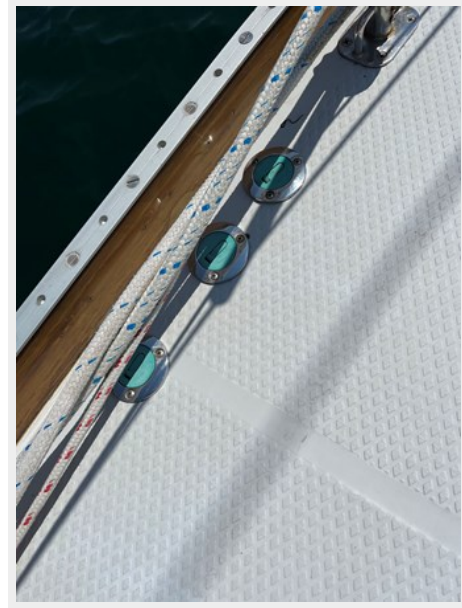
Dodger



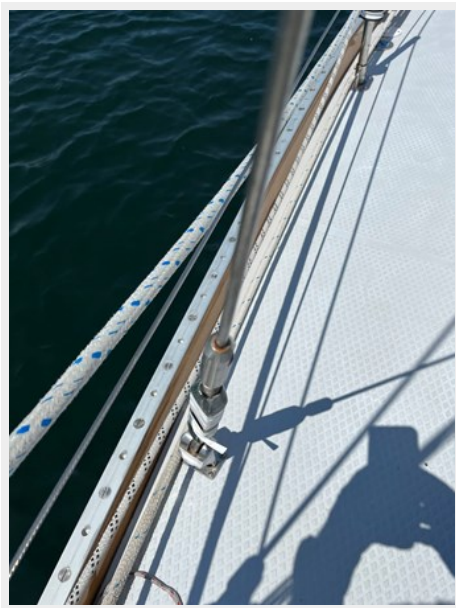
Stainless Hatches



Deck Detail



Rod Rigging



Cockpit, Fwd



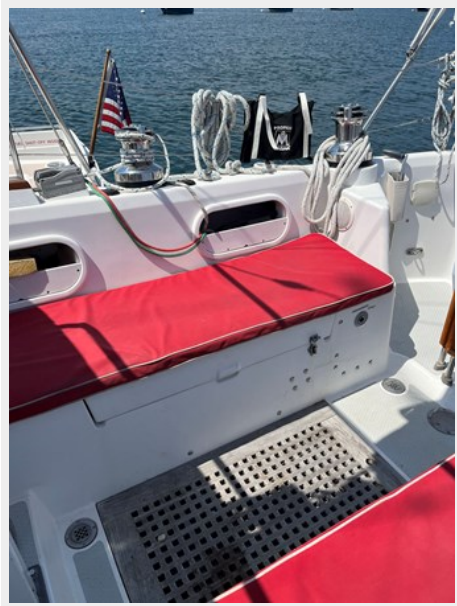
New Sailing Instruments



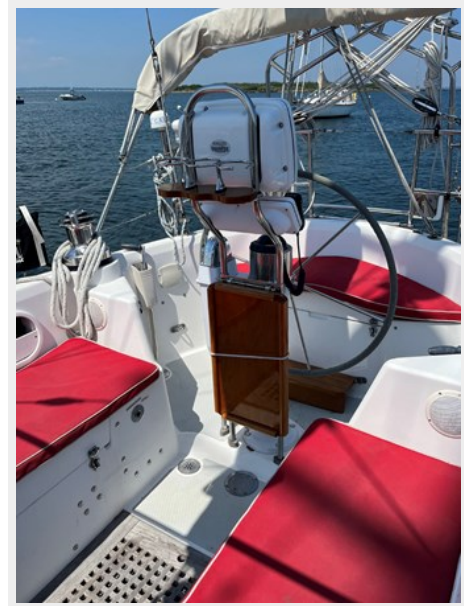
Cockpit Sailing Instruments



Cockpit



Cockpit, Aft to Helm



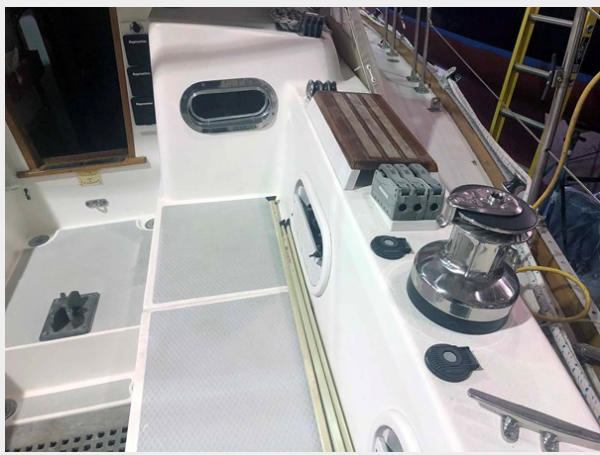
Cockpit Table



Nav Pod



Electric Winch



Winch



Centerboard Control



VHF Remote



Safety Gear



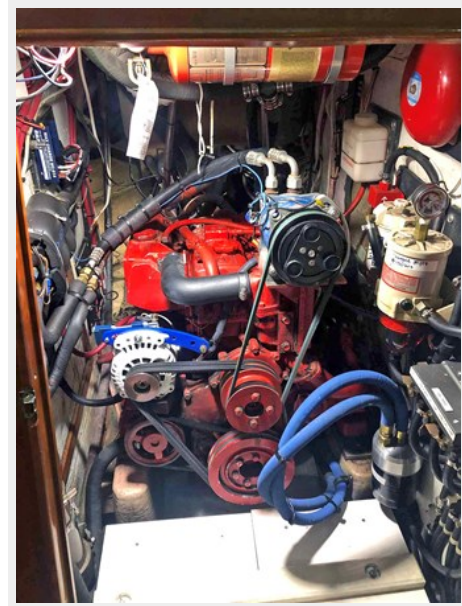
EPIRB



Autopilot Remote



Engine



Engine Hours



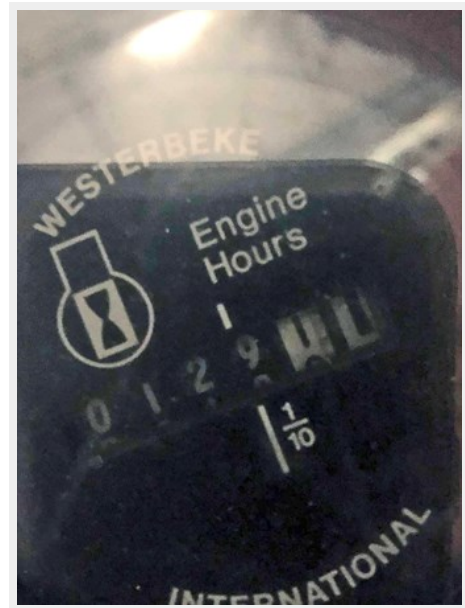
Fuel Manifold



Genset



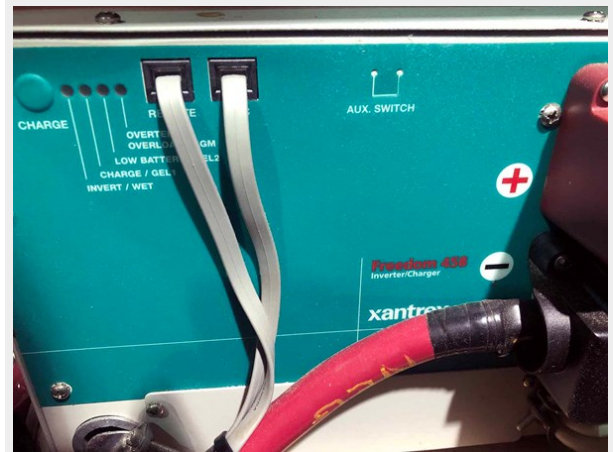
Generator Hours



Alternator



Inverter-Charger



Prop



Rudder



On Mooring



CONTACTS

Andrey Shestakov, leading yacht broker of the sales department of Shestakov Yacht Sales Inc. Shestakov Yacht Sales Inc., the official representative of the Miami/Fort Lauderdale FL headquarters.

Contact details

Email: andrey@shestakovyachtsales.com

Web: shestakovyachtsales.com/en/

Telephones

USA: +1(954)274-4435

Office hours

Monday – Saturday: **9:00 - 21:00** EDT

Sunday: **closed**

Address



Harbour Towne Marina, 850 NE 3rd St,
STE 213, Dania, FL 33004