

PEGASUS — BAYLINER



Builder: BAYLINER

Year Built: 1989

Model: Pilothouse

Price: PRICE ON APPLICATION

Location: United States

LOA: 45' (13.72mm)

Beam: 14.33

Max Draft: 3' (0.91mm)

Cruise Speed: 7 Knots Kts. (8 MPH)

Max Speed: 16 Knots Kts. (18 MPH)

Our experienced yacht broker, Andrey Shestakov, will help you choose and buy a yacht that best suits your needs **Pegasus — BAYLINER** from our catalogue. Presently, at Shestakov Yacht Sales Inc., we have a wide variety of yachts available on our sale's list. We also work in close contact with all the big yacht manufacturers from all over the world.

If you would like to buy a yacht **Pegasus — BAYLINER** or would like help answering any questions concerning purchasing, selling or chartering a yacht, please call **+1(954)274-4435**

TABLE OF CONTENTS

TABLE OF CONTENTS	2
SPECIFICATIONS	5
Overview	5
Basic Information	5
Dimensions	5
Speed, Capacities and Weight	5
Accommodations	6
Hull and Deck Information	6
Engine Information	6
PHOTOS	7
1 Pegasus 45' 1989 Bayliner	7
1_2793842_	7
2_2793842_	7
3_2793842_	7
4_2793842_	7
5_2793842_	7
6_2793842_	8
7_2793842_	8
8_2793842_	8
9_2793842_	8
10_2793842_	8
11_2793842_	8
12_2793842_	9
13_2793842_	9
14_2793842_	9
15_2793842_	9
16_2793842_	9
17_2793842_	9

18_2793842_	10
19_2793842_	10
20_2793842_	10
21_2793842_	10
22_2793842_	10
23_2793842_	10
24_2793842_	11
25_2793842_	11
26_2793842_	11
27_2793842_	11
28_2793842_	11
29_2793842_	11
30_2793842_	11
31_2793842_	11
32_2793842_	12
33_2793842_	12
34_2793842_	12
35_2793842_	12
36_2793842_	12
37_2793842_	12
38_2793842_	12
39_2793842_	12
40_2793842_	13
41_2793842_	13
42_2793842_	13
43_2793842_	13
45_2793842_	13
44_2793842_	13
46_2793842_	14

47_2793842_	14
48_2793842_	14
49_2793842_	14
50_2793842_	14
51_2793842_	14
52_2793842_	14
53_2793842_	14
54_2793842_	15
55_2793842_	15
56_2793842_	15
57_2793842_	15
58_2793842_	15
59_2793842_	15
61_2793842_	16
60_2793842_	16
62_2793842_	16
63_2793842_	16
64_2793842_	16
65_2793842_	16
67_2793842_	17
66_2793842_	17
68_2793842_	17
CONTACTS	18
Contact details	18
Telephones	18
Office hours	18
Address	18

SPECIFICATIONS

Overview

1989 Bayliner Pilothouse in good condition. Pegasus has excellent accommodations for liveaboard or long-range cruising. The Pegasus has two double staterooms and a third stateroom/office that opens into the master stateroom. The forward stateroom has a centerline double bunk. The second stateroom has a pullman style double bunk on the port side. The third stateroom/office adjoins the master stateroom and has over/under bunks (top bunk swings down to form back of settee) with a writing table and storage. Two heads, one with a separate enclosed tub & shower and the other with a separate enclosed shower. Each head has an electric toilet and vanity sink. The “U” shaped galley is on the same level as the main salon and is well lit and well ventilated by the large sliding glass windows in the main salon. 6’ 4” headroom throughout. There is a comfortable foredeck that offers a good working area for anchor work and an integrated forward facing three seat settee. The pilothouse is accessible through port and starboard sliding doors from the foredeck and through steps from the flybridge.

Basic Information

Category: Pilothouse

Sub Category: Pilothouse

Model Year: 1989

Year Built: 1989

Country: United States

Dimensions

LOA: 45' (13.72mm)

Beam: 14.33

Max Draft: 3' (0.91mm)

Speed, Capacities and Weight

Cruise Speed: 7 Knots Kts. (8 MPH)

Max Speed: 16 Knots Kts. (18 MPH)

Water Capacity: 200 Gallons

Holding Tank: 48 Gal Gallons

Fuel Capacity: 500 Gal Gallons

Accommodations

Total Cabins: 3

Sleeps: 6

Total Heads: 2

Hull and Deck Information

Hull Material: Fiberglass

Engine Information

Engines: 2

Manufacturer: Hino

Engine Type: Inboard

Fuel Type: Diesel

PHOTOS

1 Pegasus 45' 1989 Bayliner



1_2793842_



2_2793842_



3_2793842_



4_2793842_



5_2793842_



6_2793842_



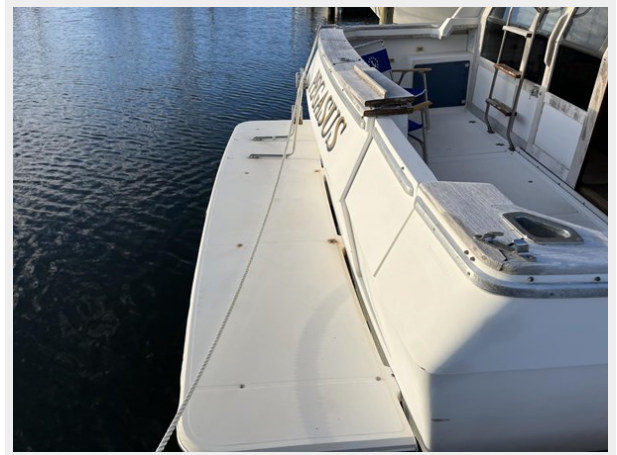
7_2793842_



8_2793842_



9_2793842_



10_2793842_



11_2793842_



12_2793842_



13_2793842_



14_2793842_



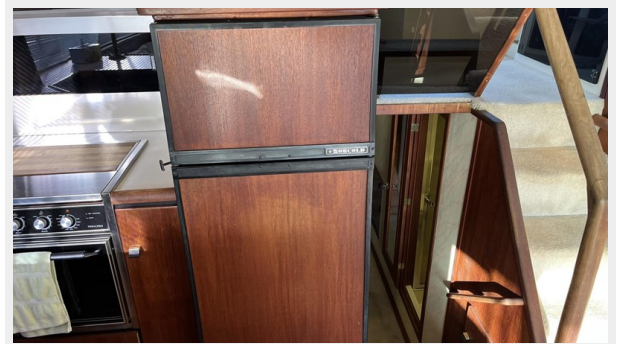
15_2793842_



16_2793842_



17_2793842_



18_2793842_



19_2793842_



20_2793842_



21_2793842_



22_2793842_



23_2793842_



24_2793842_



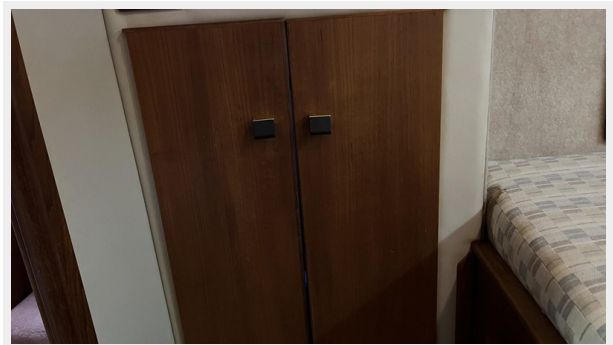
25_2793842_



26_2793842_



27_2793842_



28_2793842_



29_2793842_



30_2793842_



31_2793842_



32_2793842_



33_2793842_



34_2793842_



35_2793842_



36_2793842_



37_2793842_



38_2793842_



39_2793842_



40_2793842_



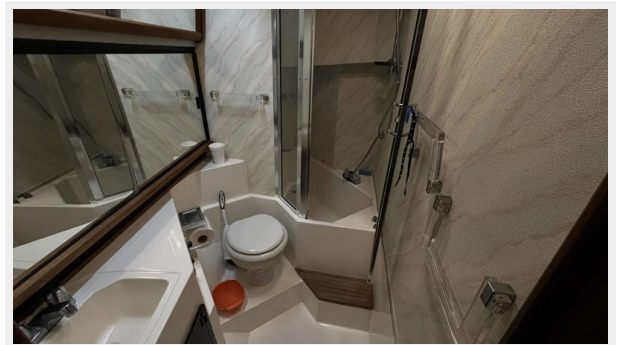
41_2793842_



42_2793842_



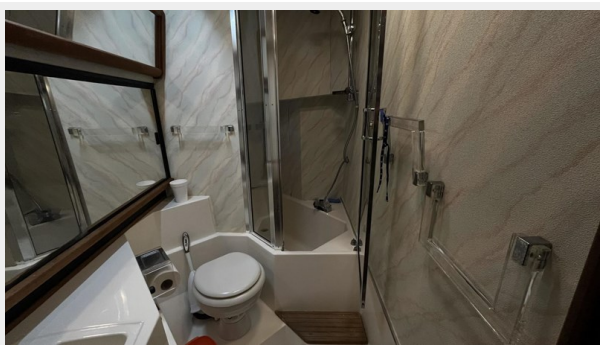
43_2793842_



45_2793842_



44_2793842_



46_2793842_



47_2793842_



48_2793842_



49_2793842_



50_2793842_



51_2793842_



52_2793842_



53_2793842_



54_2793842_



55_2793842_



56_2793842_



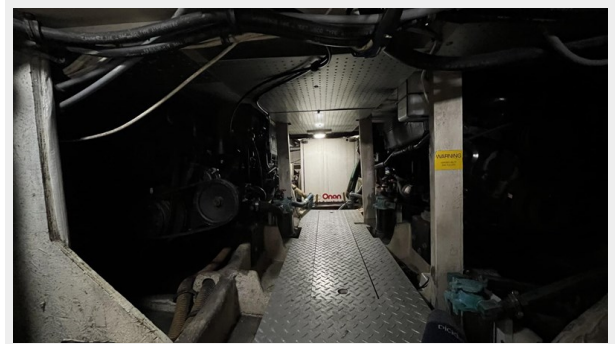
57_2793842_



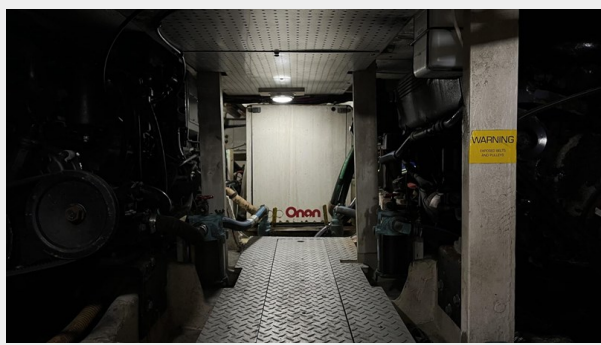
58_2793842_



59_2793842_



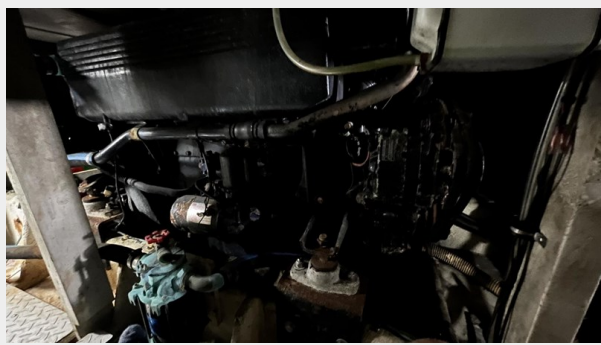
60_2793842_



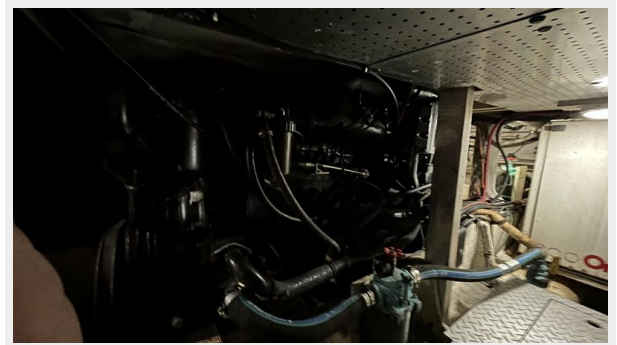
61_2793842_



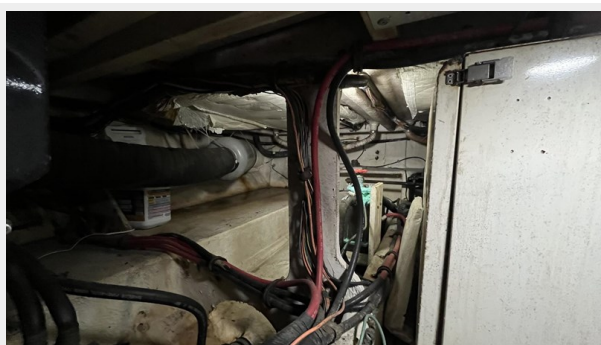
62_2793842_



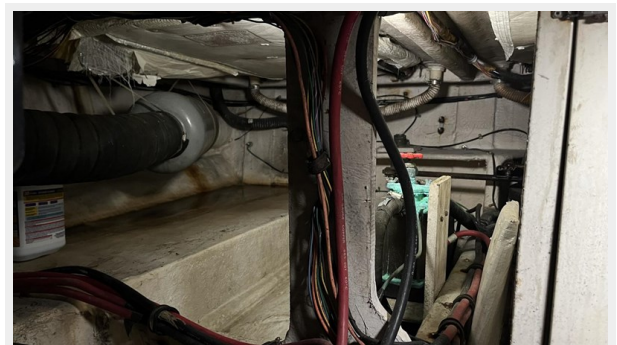
63_2793842_



64_2793842_



65_2793842_



66_2793842_



67_2793842_



68_2793842_



CONTACTS

Andrey Shestakov, leading yacht broker of the sales department of Shestakov Yacht Sales Inc. Shestakov Yacht Sales Inc., the official representative of the Miami/Fort Lauderdale FL headquarters.

Contact details

Email: andrey@shestakovyachtsales.com

Web: shestakovyachtsales.com/en/

Telephones

USA: +1(954)274-4435

Office hours

Monday – Saturday: **9:00 - 21:00** EDT

Sunday: **closed**

Address



Harbour Towne Marina, 850 NE 3rd St,
STE 213, Dania, FL 33004