

BRIAR PATCH — PRINCESS VIKING



Builder: PRINCESS VIKING

Year Built: 1999

Model: Motor Yacht

Price: PRICE ON APPLICATION

Location: United States

LOA: 65' (19.81mm)

Beam: 16.75

Max Draft: 4' 6" (1.37mm)

Our experienced yacht broker, Andrey Shestakov, will help you choose and buy a yacht that best suits your needs **Briar Patch — PRINCESS VIKING** from our catalogue. Presently, at **Shestakov Yacht Sales Inc.**, we have a wide variety of yachts available on our sale's list. We also work in close contact with all the big **yacht manufacturers** from all over the world.

If you would like to buy a yacht **Briar Patch — PRINCESS VIKING** or would like help answering any questions concerning purchasing, selling or chartering a yacht, please call **+1(954)274-4435**

TABLE OF CONTENTS

| | |
|------------------------------------|----|
| TABLE OF CONTENTS | 2 |
| SPECIFICATIONS | 5 |
| Overview | 5 |
| Basic Information | 5 |
| Dimensions | 5 |
| Speed, Capacities and Weight | 6 |
| Accommodations | 6 |
| Hull and Deck Information | 6 |
| Engine Information | 6 |
| PHOTOS | 7 |
| 8481770_20220908095754886_1_XLARGE | 7 |
| 8481770_20220908095744202_1_XLARGE | 7 |
| 8481770_20220908095734252_1_XLARGE | 7 |
| 8481770_20220908095724120_1_XLARGE | 7 |
| 8481770_20220908095823696_1_XLARGE | 8 |
| 8481770_20220906071806437_1_XLARGE | 8 |
| 8481770_20220908095833546_1_XLARGE | 8 |
| 8481770_20220906071807482_1_XLARGE | 8 |
| 8481770_20220908095838628_1_XLARGE | 8 |
| 8481770_20220908095804316_1_XLARGE | 8 |
| 8481770_20220908095848529_1_XLARGE | 9 |
| 8481770_20220908095809294_1_XLARGE | 9 |
| 8481770_20220906071812531_1_XLARGE | 9 |
| 8481770_20220906071814535_1_XLARGE | 9 |
| 8481770_20220906071813604_1_XLARGE | 9 |
| 8481770_20220906071815611_1_XLARGE | 9 |
| 8481770_20220906071816571_1_XLARGE | 10 |
| 8481770_20220906071817779_1_XLARGE | 10 |

| | |
|------------------------------------|----|
| 8481770_20220908095819062_1_XLARGE | 10 |
| 8481770_20220908095813656_1_XLARGE | 10 |
| 8481770_20220906071821641_1_XLARGE | 10 |
| 8481770_20220906071825750_1_XLARGE | 10 |
| 8481770_20220906071820670_1_XLARGE | 11 |
| 8481770_20220906071824693_1_XLARGE | 11 |
| 8481770_20220908095859845_1_XLARGE | 11 |
| 8481770_20220906071828745_1_XLARGE | 11 |
| 8481770_20220906071829795_1_XLARGE | 11 |
| 8481770_20220906071831764_1_XLARGE | 11 |
| 8481770_20220906071830715_1_XLARGE | 12 |
| 8481770_20220906071832835_1_XLARGE | 12 |
| 8481770_20220906071827732_1_XLARGE | 12 |
| 8481770_20220906071822714_1_XLARGE | 12 |
| 8481770_20220906071833807_1_XLARGE | 12 |
| 8481770_20220906071836895_1_XLARGE | 12 |
| 8481770_20220906071835776_1_XLARGE | 13 |
| 8481770_20220906071838952_1_XLARGE | 13 |
| 8481770_20220906071841922_1_XLARGE | 13 |
| 8481770_20220906071840943_1_XLARGE | 13 |
| 8481770_20220908095939172_1_XLARGE | 14 |
| 8481770_20220908095950116_1_XLARGE | 14 |
| 8481770_20220906071843935_1_XLARGE | 14 |
| 8481770_20220906071846008_1_XLARGE | 14 |
| 8481770_20220908100000475_1_XLARGE | 15 |
| 8481770_20220908100012504_1_XLARGE | 15 |
| 8481770_20220908100024019_1_XLARGE | 15 |
| 8481770_20220906071901282_1_XLARGE | 15 |
| 8481770_20220906071903197_1_XLARGE | 16 |

| | |
|------------------------------------|----|
| 8481770_20220906071854025_1_XLARGE | 16 |
| 8481770_20220906071904261_1_XLARGE | 16 |
| 8481770_20220906071858164_1_XLARGE | 16 |
| 8481770_20220906071859163_1_XLARGE | 16 |
| 8481770_20220906071856160_1_XLARGE | 16 |
| 8481770_20220906071803467_1_XLARGE | 17 |
| 8481770_20220906071805488_1_XLARGE | 17 |
| 8481770_20220906071756424_1_XLARGE | 17 |
| CONTACTS | 18 |
| Contact details | 18 |
| Telephones | 18 |
| Office hours | 18 |
| Address | 18 |

SPECIFICATIONS

Overview

Bottom Painted June 2022

Briar Patch with her unique blue hull has all the European Styling, Luxury and Performance you can dream of in a 65 foot Motoryacht. A beautiful example that has been well maintained and updated.

With her 4 stateroom layout plus crew quarters and 4 heads, she has all the room you need to cruise and entertain in style. Her innovative and huge salon has wrap around seating, bar and entertainment area, 360 degree views and opens to the curved dinette, lower helm and the split level galley below. Owner's stateroom and private head is amidship, with an equally impressive VIP suite that can be found forward.

The equally huge flybridge can be access both by an interior staircase and molded steps from the cockpit. The hardtop makes it a perfect place for entertainment with its grille and wet bar.

The swim platform is built large enough to support a tender, and has a concealed davit for launching and retrieving.

With regularly maintained 1050 HP MAN diesels "Briar Patch" has all the power you could want for a cruise in the high 20's with a top speed of 33knots. Ready to go anywhere is style.

Basic Information

Category: Motor Yacht

Sub Category: Flybridge

Model Year: 1999

Year Built: 1999

Country: United States

Dimensions

LOA: 65' (19.81mm)

Beam: 16.75

Max Draft: 4' 6" (1.37mm)

Speed, Capacities and Weight

Water Capacity: 180 Gallons

Holding Tank: 100 Gal Gallons

Fuel Capacity: 960 Gal Gallons

Accommodations

Total Cabins: 5

Hull and Deck Information

Hull Material: Fiberglass

Engine Information

Engines: 1

Manufacturer: MAN

Engine Type: Inboard

Fuel Type: Diesel

PHOTOS

8481770_20220908095754886_1_XLARGE 8481770_20220908095744202_1_XLARGE



8481770_20220908095734252_1_XLARGE



8481770_20220908095724120_1_XLARGE



8481770_20220908095823696_1_XLARGE



8481770_20220906071806437_1_XLARGE



8481770_20220908095833546_1_XLARGE 8481770_20220906071807482_1_XLARGE



8481770_20220908095838628_1_XLARGE 8481770_20220908095804316_1_XLARGE



8481770_20220908095848529_1_XLARGE



8481770_20220908095809294_1_XLARGE



8481770_20220906071812531_1_XLARGE 8481770_20220906071814535_1_XLARGE



8481770_20220906071813604_1_XLARGE 8481770_20220906071815611_1_XLARGE



8481770_20220906071816571_1_XLARGE

8481770_20220906071817779_1_XLARGE



8481770_20220908095819062_1_XLARGE 8481770_20220908095813656_1_XLARGE



8481770_20220906071821641_1_XLARGE 8481770_20220906071825750_1_XLARGE



8481770_20220906071820670_1_XLARGE 8481770_20220906071824693_1_XLARGE



8481770_20220908095859845_1_XLARGE 8481770_20220906071828745_1_XLARGE



8481770_20220906071829795_1_XLARGE 8481770_20220906071831764_1_XLARGE



8481770_20220906071830715_1_XLARGE

8481770_20220906071832835_1_XLARGE



8481770_20220906071827732_1_XLARGE 8481770_20220906071822714_1_XLARGE



8481770_20220906071833807_1_XLARGE

8481770_20220906071836895_1_XLARGE



8481770_20220906071835776_1_XLARGE



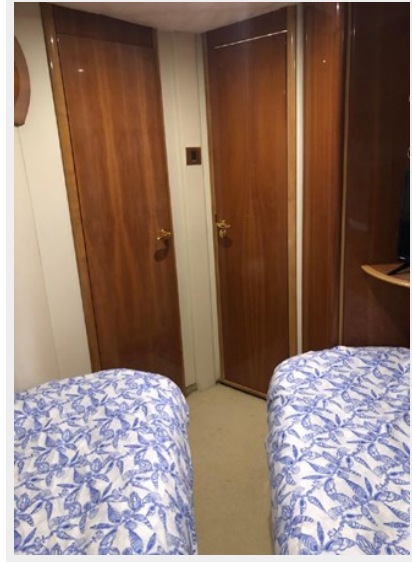
8481770_20220906071838952_1_XLARGE



8481770_20220906071841922_1_XLARGE 8481770_20220906071840943_1_XLARGE



8481770_20220908095939172_1_XLARGE 8481770_20220908095950116_1_XLARGE

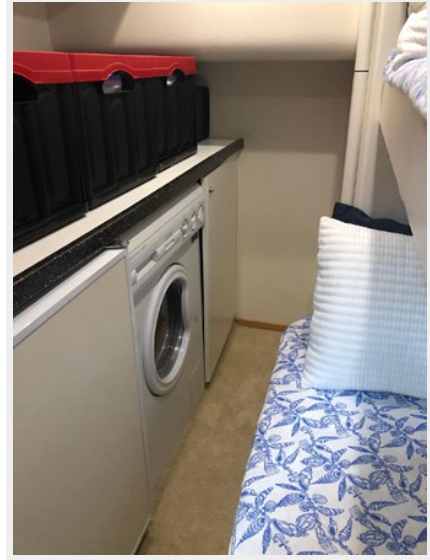


8481770_20220906071843935_1_XLARGE

8481770_20220906071846008_1_XLARGE



8481770_20220908100000475_1_XLARGE 8481770_20220908100012504_1_XLARGE



8481770_20220908100024019_1_XLARGE



8481770_20220906071901282_1_XLARGE



8481770_20220906071903197_1_XLARGE

8481770_20220906071854025_1_XLARGE



8481770_20220906071858164_1_XLARGE 8481770_20220906071904261_1_XLARGE



8481770_20220906071859163_1_XLARGE 8481770_20220906071856160_1_XLARGE



8481770_20220906071805488_1_XLARGE 8481770_20220906071803467_1_XLARGE



8481770_20220906071756424_1_XLARGE



CONTACTS

Andrey Shestakov, leading yacht broker of the sales department of Shestakov Yacht Sales Inc. Shestakov Yacht Sales Inc., the official representative of the Miami/Fort Lauderdale FL headquarters.

Contact details

Email: **andrey@shestakovyachtsales.com**

Web: shestakovyachtsales.com/en/

Telephones

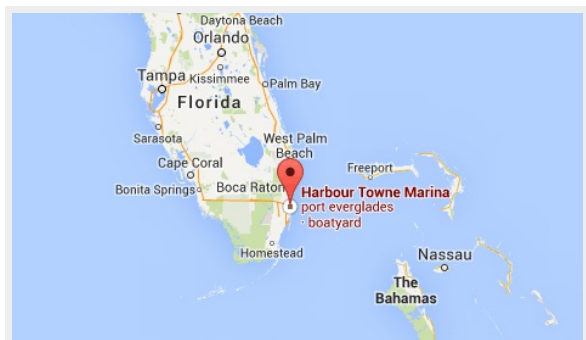
USA: **+1(954)274-4435**

Office hours

Monday – Saturday: **9:00 - 21:00** EDT

Sunday: **closed**

Address



Harbour Towne Marina, 850 NE 3rd St, STE 213, Dania, FL 33004