

VERY BULLISH II — CARVER



Builder: CARVER

Year Built: 2004

Model: Motor Yacht

Price: PRICE ON APPLICATION

Location: United States

LOA: 46' (14.02mm)

Beam: 14.91

Min Draft: 3' 7" (1.09mm)

Max Draft: 3' 7" (1.09mm)

Cruise Speed: 16 Knots Kts. (18 MPH)

Max Speed: 24 Knots Kts. (28 MPH)

Our experienced yacht broker, Andrey Shestakov, will help you choose and buy a yacht that best suits your needs **Very Bullish II — CARVER** from our catalogue. Presently, at Shestakov Yacht Sales Inc., we have a wide variety of yachts available on our sale's list. We also work in close contact with all the big yacht manufacturers from all over the world.

If you would like to buy a yacht **Very Bullish II — CARVER** or would like help answering any questions concerning purchasing, selling or chartering a yacht, please call **+1(954)274-4435**

TABLE OF CONTENTS

TABLE OF CONTENTS	2
SPECIFICATIONS	6
Overview	6
Basic Information	6
Dimensions	6
Speed, Capacities and Weight	6
Accommodations	6
Hull and Deck Information	6
Engine Information	6
PHOTOS	7
0_2794170_46_carver_port_profile1	7
1_2794170_46_carver_port_profile2	7
2_2794170_46_carver_port_forward_profile	7
3_2794170_46_carver_port_aft_profile	7
5_2794170_46_carver_aft_profile	7
4_2794170_46_carver_starboard_forward_profile	7
6_2794170_46_carver_anchor	8
7_2794170_46_carver_anchor_windlass	8
8_2794170_46_carver_foredeck1	8
9_2794170_46_carver_foredeck2	8
11_2794170_46_carver_port_sidedeck1	8
10_2794170_46_carver_foredeck_aft	8
12_2794170_46_carver_port_side_deck2	9
13_2794170_46_carver_starboard_side_deck1	9
14_2794170_46_carver_starboard_side_deck2	9
15_2794170_46_carver_flybridge_forward	9
16_2794170_46_carver_flybridge_aft	9
17_2794170_46_carver_flybridge_port_forward	9

18_2794170_46_carver_port_aft	10
19_2794170_46_carver_starboard_forward	10
20_2794170_46_carver_starboard_aft	10
21_2794170_46_carver_flybridge_helm	10
22_2794170_46_carver_flybridge_seating	10
23_2794170_46_carver_sundeck1	10
24_2794170_46_carver_sundeck2	10
25_2794170_46_carver_sundeck_port	10
26_2794170_46_carver_sundeck_starboard	11
27_2794170_46_carver_sundeck_forward	11
28_2794170_46_carver_sundeck_wetbar	11
29_2794170_46_carver_swimplatform	11
30_2794170_46_carver_salon_forward	11
31_2794170_46_carver_salon_aft	11
32_2794170_46_carver_salon_port	11
33_2794170_46_carver_salon_starboard	11
34_2794170_46_carver_salon_port_forward	12
35_2794170_46_carver_salon_port_aft	12
36_2794170_46_carver_salon_port_seating_storage	12
37_2794170_46_carver_salon_starboard_seating1	12
38_2794170_46_carver_salon_starboard_seating2	12
39_2794170_46_carver_dinette	12
40_2794170_46_carver_galley1	12
41_2794170_46_carver_galley2	12
42_2794170_46_carver_master_stateroom	13
43_2794170_46_carver_master_stateroom_port	13
44_2794170_46_carver_master_stateroom_starboard	13
45_2794170_46_carver_master_stateroom_forward	13
46_2794170_46_carver_master_stateroom_head	13

47_2794170_46_carver_master_stateroom_shower	13
48_2794170_46_carver_forward_guest_stateroom	14
49_2794170_46_carver_forward_guest_stateroom_port	14
50_2794170_46_carver_forward_guest_stateroom_starboard	14
51_2794170_46_carver_forward_guest_stateroom_aft	14
53_2794170_46_carver_guest_head	14
52_2794170_46_carver_starboard_guest_stateroom	14
54_2794170_46_carver_washer_dryer	15
55_2794170_46_carver_engine_room_access	15
56_2794170_46_carver_engine_room_forward	15
57_2794170_46_carver_engine_room_aft	15
59_2794170_46_carver_port_racor_fuel_filter	15
58_2794170_46_carver_port_main_engine	15
61_2794170_46_carver_starboard_racor_fuel_filter	16
60_2794170_46_carver_starboard_main_engine	16
62_2794170_46_carver_water_heater	16
63_2794170_46_carver_bilge_buster_system	16
64_2794170_46_carver_salon_electrical_panels	16
65_2794170_46_carver_engine_room_electrical_panel	16
66_2794170_46_carver_generator_soundbox	17
67_2794170_46_carver_generator	17
68_2794170_46_carver_generator_racor_fuel_filter	17
69_2794170_46_carver_battery_charger1	17
70_2794170_46_carver_battery_charger2	17
71_2794170_46_carver_battery_charger3	17
CONTACTS	18
Contact details	18
Telephones	18
Office hours	18

Address

18

SPECIFICATIONS

Overview

Very Bullish II is a 2004 46' Carver 466 Motoryacht in nice condition. She is docked under cover in fresh water. She offers twin Volvo-Penta 480 HP main engines, Kohler 20 kW generator, dripless shaft seals, QL bow and stern thrusters, AIS, underwater lights, 3 stateroom layout and a clean, uncluttered interior. Very Bullish II is Great Loop capable.

Basic Information

Category: Motor Yacht	Model Year: 2004
Year Built: 2004	Country: United States

Dimensions

LOA: 46' (14.02mm)	Beam: 14.91
Min Draft: 3' 7" (1.09mm)	Max Draft: 3' 7" (1.09mm)

Speed, Capacities and Weight

Cruise Speed: 16 Knots Kts. (18 MPH)	Max Speed: 24 Knots Kts. (28 MPH)
Water Capacity: 130 Gallons	Holding Tank: 80 Gal Gallons
Fuel Capacity: 480 Gal Gallons	

Accommodations

Total Cabins: 3	Total Heads: 2
------------------------	-----------------------

Hull and Deck Information

Hull Material: Fiberglass

Engine Information

Engines: 1	Manufacturer: Volvo Penta
Engine Type: Inboard	Fuel Type: Diesel

PHOTOS

0_2794170_46_carver_port_profile1



1_2794170_46_carver_port_profile2



2_2794170_46_carver_port_forward_profile



3_2794170_46_carver_port_aft_profile



4_2794170_46_carver_starboard_forward_profile



5_2794170_46_carver_aft_profile



6_2794170_46_carver_anchor



7_2794170_46_carver_anchor_windlass



8_2794170_46_carver_foredeck1



9_2794170_46_carver_foredeck2



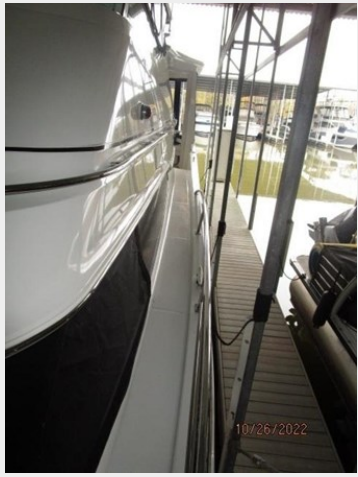
10_2794170_46_carver_foredeck_aft



11_2794170_46_carver_port_sidedeck1



12_2794170_46_carver_port_side_deck2



13_2794170_46_carver_starboard_side_deck1



14_2794170_46_carver_starboard_side_deck2



15_2794170_46_carver_flybridge_forward



16_2794170_46_carver_flybridge_aft



17_2794170_46_carver_flybridge_port_forward



18_2794170_46_carver_port_aft



19_2794170_46_carver_starboard_forward



20_2794170_46_carver_starboard_aft



21_2794170_46_carver_flybridge_helm



22_2794170_46_carver_flybridge_seating



23_2794170_46_carver_sundeck1



24_2794170_46_carver_sundeck2



25_2794170_46_carver_sundeck_port



26_2794170_46_carver_sundeck_starboard



27_2794170_46_carver_sundeck_forward



28_2794170_46_carver_sundeck_wetbar



29_2794170_46_carver_swimplatform



30_2794170_46_carver_salon_forward



31_2794170_46_carver_salon_aft



32_2794170_46_carver_salon_port



33_2794170_46_carver_salon_starboard



34_2794170_46_carver_salon_port_forward



35_2794170_46_carver_salon_port_aft



36_2794170_46_carver_salon_port_seating_storage



37_2794170_46_carver_salon_starboard_seating1



38_2794170_46_carver_salon_starboard_seating2



39_2794170_46_carver_dinette



40_2794170_46_carver_galley1



41_2794170_46_carver_galley2



42_2794170_46_carver_master_stateroom



43_2794170_46_carver_master_stateroom_port



44_2794170_46_carver_master_stateroom_starboard



45_2794170_46_carver_master_stateroom_forward



46_2794170_46_carver_master_stateroom_head



47_2794170_46_carver_master_stateroom_shower



48_2794170_46_carver_forward_guest_stateroom



49_2794170_46_carver_forward_guest_stateroom_port



50_2794170_46_carver_forward_guest_stateroom_starboard



51_2794170_46_carver_forward_guest_stateroom_aft



53_2794170_46_carver_guest_head



52_2794170_46_carver_starboard_guest_stateroom



54_2794170_46_carver_washer_dryer



55_2794170_46_carver_engine_room_access



56_2794170_46_carver_engine_room_forward



57_2794170_46_carver_engine_room_aft



58_2794170_46_carver_port_main_engine



59_2794170_46_carver_port_racor_fuel_filter



60_2794170_46_carver_starboard_main_engine



61_2794170_46_carver_starboard_racor_fuel_filter



62_2794170_46_carver_water_heater



63_2794170_46_carver_bilge_buster_system



64_2794170_46_carver_salon_electrical_panels



65_2794170_46_carver_engine_room_electrical_panel



66_2794170_46_carver_generator_soundbox



67_2794170_46_carver_generator



68_2794170_46_carver_generator_racor_fuel_filter



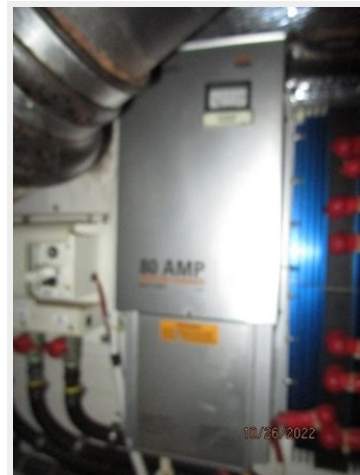
69_2794170_46_carver_battery_charger1



70_2794170_46_carver_battery_charger2



71_2794170_46_carver_battery_charger3



CONTACTS

Andrey Shestakov, leading yacht broker of the sales department of Shestakov Yacht Sales Inc. Shestakov Yacht Sales Inc., the official representative of the Miami/Fort Lauderdale FL headquarters.

Contact details

Email:
andrey@shestakovyachtsales.com

Web: shestakovyachtsales.com/en/

Telephones

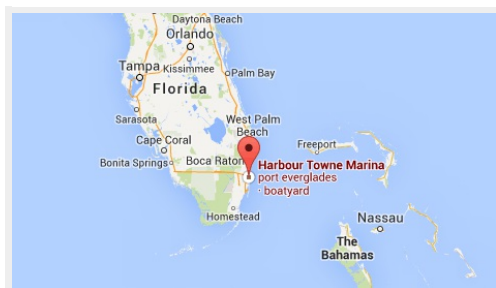
USA: +1(954)274-4435

Office hours

Monday – Saturday: **9:00 - 21:00 EDT**

Sunday: **closed**

Address



Harbour Towne Marina, 850 NE 3rd St,
STE 213, Dania, FL 33004