

SEAKER — CAMANO



Builder: CAMANO

Year Built: 2006

Model: trawler

Price: PRICE ON APPLICATION

Location: United States

LOA: 31' (9.45mm)

Beam: 10.5

Min Draft: 3' 3" (0.99mm)

Max Draft: 3' 3" (0.99mm)

Cruise Speed: 10 Knots Kts. (12 MPH)

Max Speed: 16 Knots Kts. (18 MPH)

Our experienced yacht broker, Andrey Shestakov, will help you choose and buy a yacht that best suits your needs **Seaker — CAMANO** from our catalogue. Presently, at Shestakov Yacht Sales Inc., we have a wide variety of yachts available on our sale's list. We also work in close contact with all the big yacht manufacturers from all over the world.

If you would like to buy a yacht **Seaker — CAMANO** or would like help answering any questions concerning purchasing, selling or chartering a yacht, please call **+1(954)274-4435**

TABLE OF CONTENTS

TABLE OF CONTENTS	2
SPECIFICATIONS	5
Overview	5
Basic Information	5
Dimensions	5
Speed, Capacities and Weight	5
Accommodations	5
Hull and Deck Information	5
Engine Information	6
PHOTOS	7
0_2794002_31_camano_port_aft_profile	7
1_2794002_31_camano_starboard_forward_profile	7
2_2794002_31_camano_starboard_aft_profile	7
3_2794002_31_camano_aft_profile	7
4_2794002_31_camano_anchor_windlass	7
5_2794002_31_camano_fordeck	7
7_2794002_31_camano_port_side_deck1	8
6_2794002_31_camano_foredeck_aft	8
8_2794002_31_camano_port_side_deck2	8
9_2794002_31_camano_starboard_side_deck1	8
10_2794002_31_camano_starboard_side_deck2	9
11_2794002_31_camano_flybridge_forward	9
13_2794002_31_camano_flybridge_covered	9
12_2794002_31_camano_flybridge_aft	9
14_2794002_31_camano_flybridge_helm1	9
15_2794002_31_camano_flybridge_helm2	9
16_2794002_31_camano_flybridge_helmseats	10
17_2794002_31_camano_aftdeck	10

18_2794002_31_camano_aftdeck_port	10
19_2794002_31_camano_aftdeck_starboard	10
21_2794002_31_camano_outboard_davit	10
20_2794002_31_camano_aftdeck_forward	10
22_2794002_31_camano_swimplatform	11
23_2794002_31_camano_salon_forward	11
24_2794002_31_camano_salon_wood_sole	11
25_2794002_31_camano_salon_aft	11
26_2794002_31_camano_salon_port	11
27_2794002_31_camano_salon_starboard	11
28_2794002_31_camano_salon_seating	12
29_2794002_31_camano_salon_custom_storage	12
30_2794002_31_camano_salon_tv	12
31_2794002_31_camano_salon_tv_closed	12
32_2794002_31_camano_lower_helm1	12
33_2794002_31_camano_lower_helm2	12
34_2794002_31_camano_galley1	13
35_2794002_31_camano_galley2	13
36_2794002_31_camano_pantry	13
37_2794002_31_camano_stateroom1	13
38_2794002_31_camano_stateroom2	13
39_2794002_31_camano_stateroom_port	13
40_2794002_31_camano_stateroom_starboard	14
41_2794002_31_camano_stateroom_tv	14
42_2794002_31_camano_stateroom_wood_sole	14
43_2794002_31_camano_stateroom_custom_storage	14
44_2794002_31_camano_head	14
45_2794002_31_camano_engine_room	14
46_2794002_31_camano_main_engine	15

47_2794002_31_camano_main_engine_fuel_filters	15
48_2794002_31_camano_floscan_system	15
49_2794002_31_camano_oil_change_system	15
50_2794002_31_camano_water_heater	15
51_2794002_31_camano_electrical_panel	15
52_2794002_31_camano_generator	16
53_2794002_31_camano_generator_fuel_filter	16
CONTACTS	17
Contact details	17
Telephones	17
Office hours	17
Address	17

SPECIFICATIONS

Overview

Seaker is a 2006 31' Camano trawler in nice condition. She offers a single Yanmar 200 HP main engine, Mastervolt 3.5 kW generator, bowthruster, inverter, Floscan fuel monitoring system, oil change system, reverse cycle air conditioning/heating system, upper and lower helms and a lot more. With an attainable 10'8" height above the waterline, Seaker is Great Loop capable.

Basic Information

Category: trawler	Model Year: 2006
Year Built: 2006	Country: United States

Dimensions

LOA: 31' (9.45mm)	Beam: 10.5
Min Draft: 3' 3" (0.99mm)	Max Draft: 3' 3" (0.99mm)

Speed, Capacities and Weight

Cruise Speed: 10 Knots Kts. (12 MPH)	Max Speed: 16 Knots Kts. (18 MPH)
Water Capacity: 70 Gallons	Holding Tank: 15 Gal Gallons
Fuel Capacity: 133 Gal Gallons	

Accommodations

Total Cabins: 1	Sleeps: 4
Total Heads: 1	

Hull and Deck Information

Hull Material: Fiberglass

Engine Information

Engines: 1

Manufacturer: Yanmar

Engine Type: Inboard

Fuel Type: Diesel

PHOTOS

0_2794002_31_camano_port_aft_profile



1_2794002_31_camano_starboard_forward_profile



2_2794002_31_camano_starboard_aft_profile



3_2794002_31_camano_aft_profile



4_2794002_31_camano_anchor_windlass



5_2794002_31_camano_fordeck



7_2794002_31_camano_port_side_deck1



6_2794002_31_camano_foredeck_aft



8_2794002_31_camano_port_side_deck2



9_2794002_31_camano_starboard_side_deck1



10_2794002_31_camano_starboard_side_deck2



11_2794002_31_camano_flybridge_forward



12_2794002_31_camano_flybridge_aft



13_2794002_31_camano_flybridge_covered



14_2794002_31_camano_flybridge_helm1



15_2794002_31_camano_flybridge_helm2



16_2794002_31_camano_flybridge_helmseats



17_2794002_31_camano_aftdeck



18_2794002_31_camano_aftdeck_port



19_2794002_31_camano_aftdeck_starboard



20_2794002_31_camano_aftdeck_forward



21_2794002_31_camano_outboard_davit



22_2794002_31_camano_swimplatform



23_2794002_31_camano_salon_forward



24_2794002_31_camano_salon_wood_sole



25_2794002_31_camano_salon_aft



26_2794002_31_camano_salon_port



27_2794002_31_camano_salon_starboard



28_2794002_31_camano_salon_seating



29_2794002_31_camano_salon_custom_storage



30_2794002_31_camano_salon_tv



31_2794002_31_camano_salon_tv_closed



32_2794002_31_camano_lower_helm1



33_2794002_31_camano_lower_helm2



34_2794002_31_camano_galley1



35_2794002_31_camano_galley2



36_2794002_31_camano_pantry



37_2794002_31_camano_stateroom1



38_2794002_31_camano_stateroom2



39_2794002_31_camano_stateroom_port



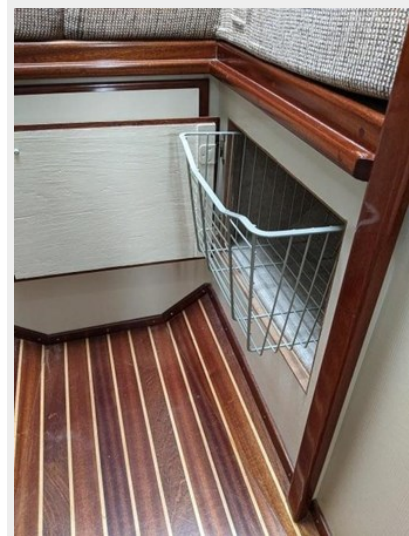
40_2794002_31_camano_stateroom_starboard



41_2794002_31_camano_stateroom_tv



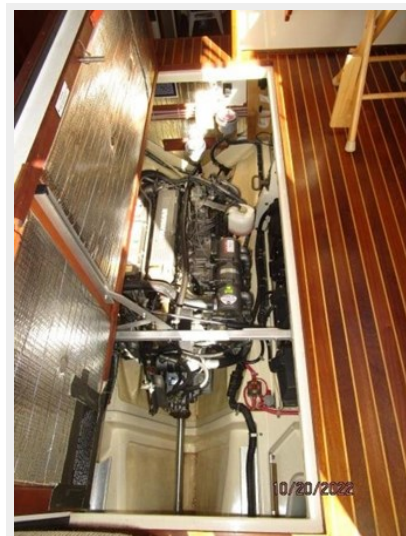
42_2794002_31_camano_stateroom_wood_sole 43_2794002_31_camano_stateroom_custom_storage



44_2794002_31_camano_head



45_2794002_31_camano_engine_room



46_2794002_31_camano_main_engine



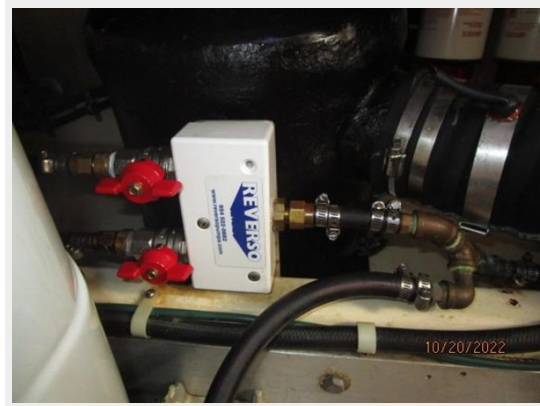
47_2794002_31_camano_main_engine_fuel_filters



48_2794002_31_camano_floscan_system



49_2794002_31_camano_oil_change_system



50_2794002_31_camano_water_heater



51_2794002_31_camano_electrical_panel



52_2794002_31_camano_generator



53_2794002_31_camano_generator_fuel_filter



CONTACTS

Andrey Shestakov, leading yacht broker of the sales department of Shestakov Yacht Sales Inc. Shestakov Yacht Sales Inc., the official representative of the Miami/Fort Lauderdale FL headquarters.

Contact details

Email:
andrey@shestakovyachtsales.com

Web: shestakovyachtsales.com/en/

Telephones

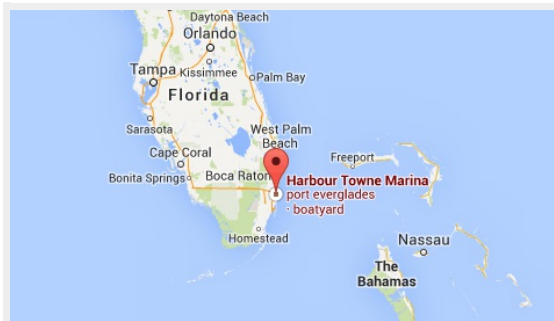
USA: **+1(954)274-4435**

Office hours

Monday – Saturday: **9:00 - 21:00 EDT**

Sunday: **closed**

Address



Harbour Towne Marina, 850 NE 3rd St,
STE 213, Dania, FL 33004