

LEGENDARY — NORTH COAST YACHTS



Builder: NORTH COAST YACHTS

Year Built: 2000

Model: Motor Yacht

Price: PRICE ON APPLICATION

Location: United States

LOA: 120' (36.58mm)

Beam: 24.75

Max Draft: 6' 6" (1.98mm)

Cruise Speed: 20 Knots Kts. (23 MPH)

Max Speed: 22 Knots Kts. (25 MPH)

Our experienced yacht broker, Andrey Shestakov, will help you choose and buy a yacht that best suits your needs **Legendary — NORTH COAST YACHTS** from our catalogue. Presently, at Shestakov Yacht Sales Inc., we have a wide variety of yachts available on our sale's list. We also work in close contact with all the big yacht manufacturers from all over the world.

If you would like to buy a yacht **Legendary — NORTH COAST YACHTS** or would like help answering any questions concerning purchasing, selling or chartering a yacht, please call **+1(954)274-4435**

TABLE OF CONTENTS

TABLE OF CONTENTS	2
SPECIFICATIONS	3
Overview	3
Basic Information	3
Dimensions	3
Speed, Capacities and Weight	4
Accommodations	4
Hull and Deck Information	4
Engine Information	4
PHOTOS	5
CONTACTS	13
Contact details	13
Telephones	13
Office hours	13
Address	13

SPECIFICATIONS

Overview

HUGE \$1,000,000 PRICE REDUCTION

This North Coast 120' is a spectacular yacht with an extensive refit that occurred in 2021-2022, taking over 12 months and close to \$2M which has been invested in her. She underwent a complete paint job, top to bottom, with 2 coats of Awlgrip Total Prime 545 and 3 topcoats of Awlcraft 2000 Snow White at the prestigious Roscioli Yachting Center in Fort Lauderdale, FL.

While out of the water, all underwater components - thru-hull fittings, underwater gear stabilizers, bow thrusters, etc. - were serviced and maintained. Additionally, prior to paint, all deck fittings, cleats and winches were removed, serviced and replaced after paint. Extensive work was also performed on the custom hydraulic swim platform, fire system and other major systems which were updated or serviced. A complete W6 was performed down to crank and bearings and a complete engine rebuild down to zero time by Marine Power in Fort Lauderdale, FL. The engine room also went through a major clean up, refit and all systems were gone through and operation checked and/or serviced.

Basic Information

Category: Motor Yacht

Sub Category: Raised Pilothouse

Model Year: 2000

Year Built: 2000

Refit Type: Full Exterior paint and engine overhauls

Country: United States

Dimensions

LOA: 120' (36.58mm)

Beam: 24.75

Max Draft: 6' 6" (1.98mm)

Speed, Capacities and Weight

Cruise Speed: 20 Knots Kts. (23 MPH)

Max Speed: 22 Knots Kts. (25 MPH)

Water Capacity: 800 Gallons

Fuel Capacity: 8160 Gal Gallons

Accommodations

Total Cabins: 4

Total Berths: 4

Sleeps: 8

Total Heads: 5

Crew Cabin: 4

Crew Berths: 5

Crew Heads: 2

Hull and Deck Information

Hull Material: Fiberglass

Deck Material: Fiberglass

Hull Configuration: Modified V-Hull

Hull Color: White

Engine Information

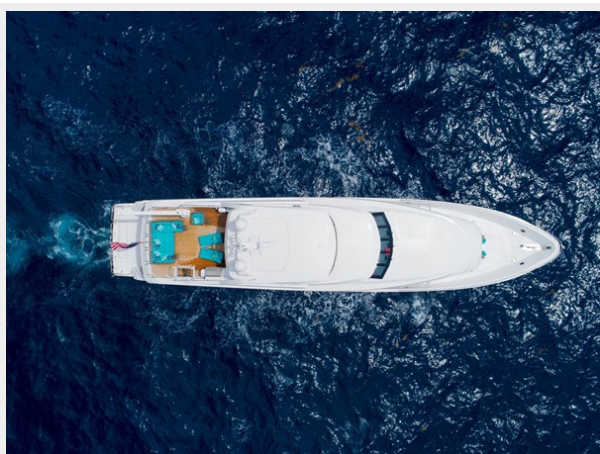
Engines: 2

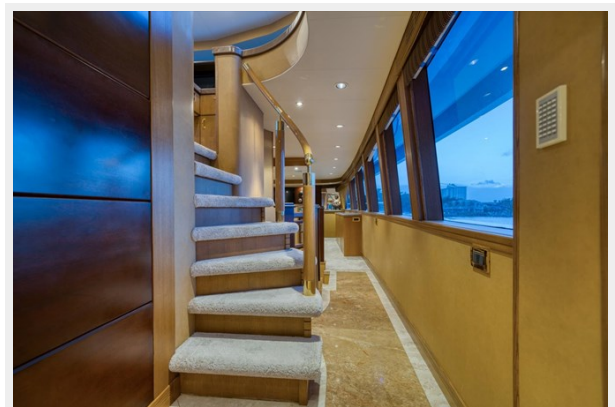
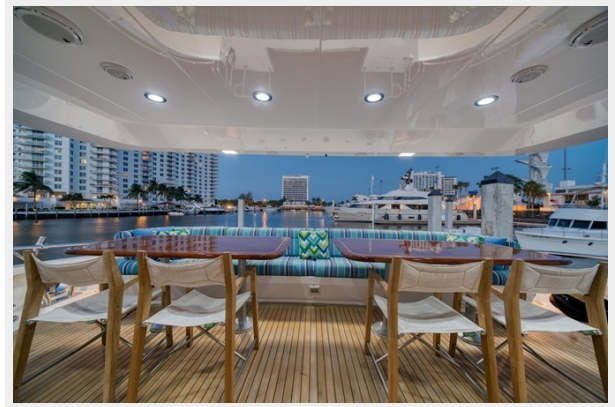
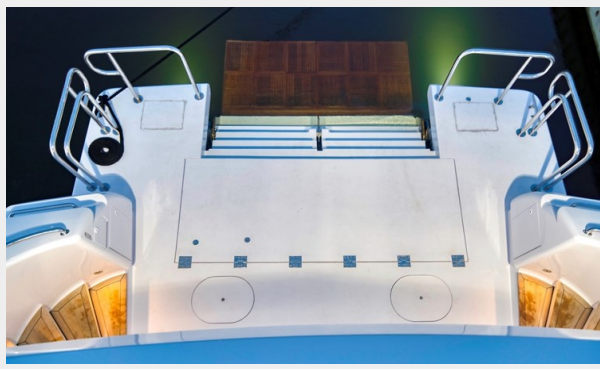
Manufacturer: MTU

Engine Type: Inboard

Fuel Type: Diesel

PHOTOS



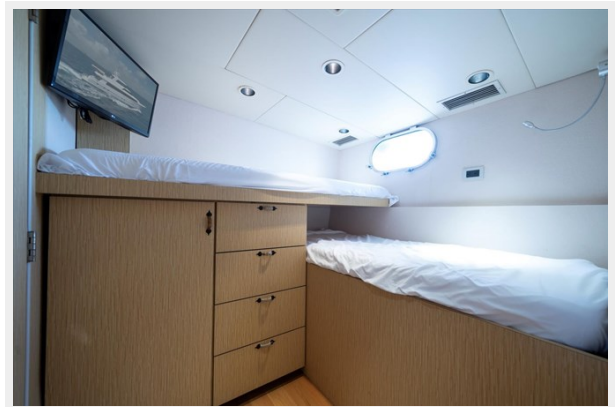


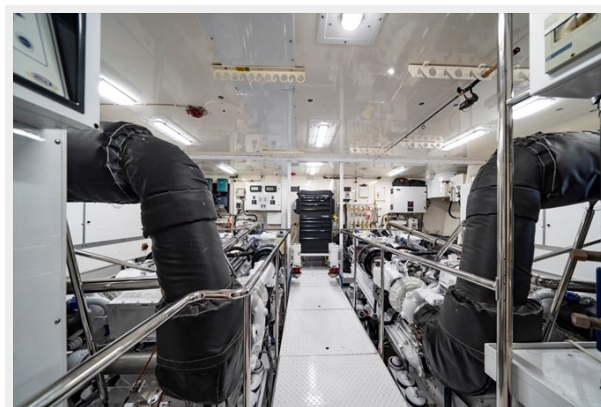












CONTACTS

Andrey Shestakov, leading yacht broker of the sales department of Shestakov Yacht Sales Inc. Shestakov Yacht Sales Inc., the official representative of the Miami/Fort Lauderdale FL headquarters.

Contact details

Email: **andrey@shestakovyachtsales.com**

Web: shestakovyachtsales.com/en/

Telephones

USA: **+1(954)274-4435**

Office hours

Monday – Saturday: **9:00 - 21:00 EDT**

Sunday: **closed**

Address



Harbour Towne Marina, 850 NE 3rd St,
STE 213, Dania, FL 33004