

RANGER — RHODES



Builder: RHODES

Year Built: 1960

Model: Classic Yacht

Price: \$139,000 USD

Location: United States

LOA: 40' 8" (12.4mm)

Beam: 10

Max Draft: 5' 10" (1.78mm)

Cruise Speed: 6 Knots Kts. (7 MPH)

Our experienced yacht broker, Andrey Shestakov, will help you choose and buy a yacht that best suits your needs **Ranger — RHODES** from our catalogue. Presently, at Shestakov Yacht Sales Inc., we have a wide variety of yachts available on our sale's list. We also work in close contact with all the big yacht manufacturers from all over the world.

If you would like to buy a yacht **Ranger — RHODES** or would like help answering any questions concerning purchasing, selling or chartering a yacht, please call **+1(954)274-4435**

TABLE OF CONTENTS

TABLE OF CONTENTS	2
SPECIFICATIONS	4
Overview	4
Basic Information	4
Dimensions	4
Speed, Capacities and Weight	4
Accommodations	4
Hull and Deck Information	5
Engine Information	5
PHOTOS	6
Profile	6
Stern Shot	6
Port Side	6
Starboard Side	6
Salon	6
Aft Berth	6
Head	7
Forepeak	7
Engine Compartment	7
Cockpit	7
Helm	8
Helm2	8
Fairleads	8
Sheet	8
Boom	9
Turning Blocks	9
Bow Shot	9
CONTACTS	10

Contact details	10
Telephones	10
Office hours	10
Address	10

SPECIFICATIONS

Overview

Available for the first time since the completion of a seven-year keel-up restoration, Ranger has benefitted from a history of light use combined with an open checkbook refurbishment. The result is the recreation of this classic Rhodes design classic sailboat built in fiberglass that today shows as new. Whether competing in regattas or cruising with friends and family, her owner will enjoy great performance, combined with practicality, and low maintenance in this meticulously restored neo-classic.

Basic Information

Category: Classic Yacht

Model Year: 1960

Year Built: 1960

Refit Type: Major Refit

Country: United States

Dimensions

LOA: 40' 8" (12.4mm)

LWL: 28' (8.53mm)

Beam: 10

Max Draft: 5' 10" (1.78mm)

Speed, Capacities and Weight

Cruise Speed: 6 Knots Kts. (7 MPH)

Water Capacity: 60 Gallons

Holding Tank: 40 Gal Gallons

Fuel Capacity: 20 Gal Gallons

Accommodations

Total Cabins: 1

Total Berths: 6

Sleeps: 6

Total Heads: 1

Hull and Deck Information

Hull Material: Fiberglass

Deck Material: Fiberglass

Hull Color: Aristo Blue

Hull Designer: Bill Garden

Exterior Designer: Phillip Rhodes

Interior Designer: Phillip Rhodes

Engine Information

Engines: 1

Manufacturer: Beta

Engine Type: Inboard

Fuel Type: Diesel

PHOTOS

Stern Shot



Profile



Port Side



Starboard Side



Salon



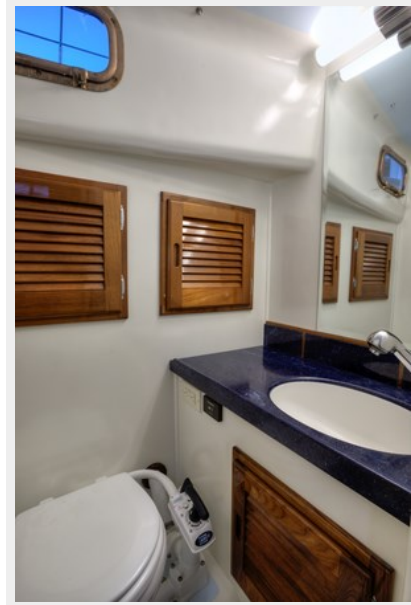
Aft Berth



Forepeak



Head



Engine Compartment



Cockpit



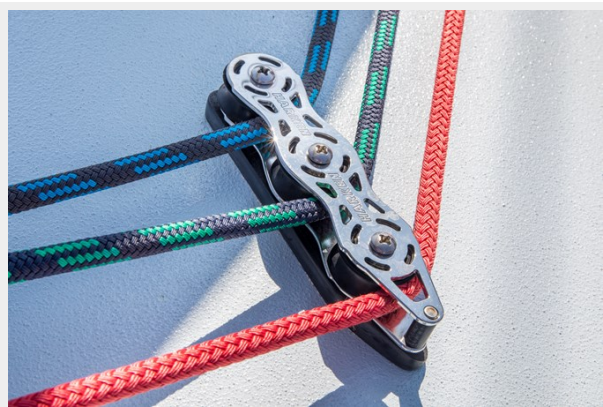
Helm



Helm2



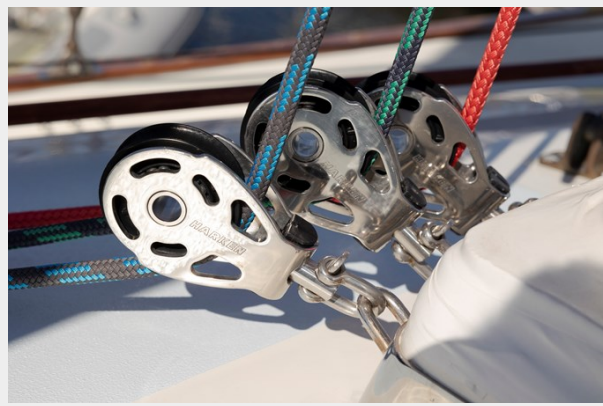
Fairleads



Sheet



Turning Blocks



Boom



Bow Shot



CONTACTS

Andrey Shestakov, leading yacht broker of the sales department of Shestakov Yacht Sales Inc. Shestakov Yacht Sales Inc., the official representative of the Miami/Fort Lauderdale FL headquarters.

Contact details

Email: andrey@shestakovyachtsales.com

Web: shestakovyachtsales.com/en/

Telephones

USA: +1(954)274-4435

Office hours

Monday – Saturday: **9:00 - 21:00** EDT

Sunday: **closed**

Address



Harbour Towne Marina, 850 NE 3rd St,
STE 213, Dania, FL 33004