

FORMULA 40 PC — FORMULA



Builder: FORMULA

LOA: 40' (12.19mm)

Year Built: 2002

Beam: 12.66

Model: cruiser

Max Draft: 3' (0.91mm)

Price: PRICE ON APPLICATION

Location: United States

Our experienced yacht broker, Andrey Shestakov, will help you choose and buy a yacht that best suits your needs **Formula 40 PC — FORMULA** from our catalogue. Presently, at Shestakov Yacht Sales Inc., we have a wide variety of yachts available on our sale's list. We also work in close contact with all the big yacht manufacturers from all over the world.

If you would like to buy a yacht **Formula 40 PC — FORMULA** or would like help answering any questions concerning purchasing, selling or chartering a yacht, please call **+1(954)274-4435**

TABLE OF CONTENTS

TABLE OF CONTENTS	2
SPECIFICATIONS	5
Overview	5
Basic Information	5
Dimensions	6
Speed, Capacities and Weight	6
Accommodations	6
Hull and Deck Information	6
Engine Information	6
PHOTOS	7
2	7
3	7
4	7
5	7
6	7
7	7
8	8
9	8
10	8
11	8
12	8
13	8
14	8
15	8
16	9
17	9
18	9
19	9

20	9
21	9
22	9
23	9
24	10
25	10
26	10
27	10
28	10
29	10
30	10
31	10
32	11
33	11
34	11
35	11
36	11
37	11
38	11
39	11
40	12
41	12
42	12
43	12
44	12
45	12
46	12
47	12
48	13

49	13
50	13
51	13
52	13
53	13
54	13
55	13
56	14
57	14
58	14
59	14
CONTACTS	15
Contact details	15
Telephones	15
Office hours	15
Address	15

SPECIFICATIONS

Overview

2002, 40' FORMULA 40 PC LOA: 42' 7", Beam: 12' 8" Max Hull Draft: 3' 0", Displacement: 19,304lbs Fuel Capacity: 250 U.S. Gallons, Water Capacity: 55 U.S. Gallons, Holding Tank: 57 Engines: Twin YANMAR 6LYPA-STP 420HP DIESEL Inboards When you research the YANMAR 6LYPA-STP 420HP Diesel Engines, you will not only find them to be great performing engines, but extremely fuel efficient! VESSEL WALK-THROUGH: This 40PC has sleeping arrangements which are very comfortable for four (4) adults, two (2) in the master forward berth, and two (2) in the aft guest berth (privacy curtains forward and aft). The vessel features a large aft swim platform with retractable ladder; hot and cold pressurized fresh water shower; extremely large aft storage trunk and convenient water and electric hook-ups when dockside. The cockpit seating area is designed for total comfort for all of your many guests this boat can accommodate. The three (3) Air Conditioning units will keep you more than cool below deck. You will find the helm A/C to be a blessing when cruising in the hottest Florida Summer months. There is a Westerbeke 5.0kw BCDB-614 Diesel Generator that powers all of your appliances and air conditioning systems while at sea. BELOW DECK: you will find the Master Berth is located forward with an ultra comfortable upgraded mattress; large storage drawers at the foot of the bed; mirrored hanging storage closets (port and starboard), ample lighting and storage throughout and a retractable hide-away slider privacy curtain. The full Galley is located to port and equipped with a corian counter top; two burner flat stove; Nova-Kool Refrigerator/Freezer; extra large Stainless Steel Sink; Emerson Microwave Oven; Large Overhead Storage Areas; excellent overhead lighting; and convenient trash compartment. Located aft of the galley to port is the Privacy Head with SeaLand VacuFlush system; hot/cold separate shower with glass enclosure lighting and storage areas. The guest quarters located aft also sleeps two (2) adults and features a flat screen TV, tons of storage and privacy curtain.

Basic Information

Category: cruiser

Model Year: 2002

Year Built: 2002

Country: United States

Dimensions

LOA: 40' (12.19mm)

Beam: 12.66

Max Draft: 3' (0.91mm)

Speed, Capacities and Weight

Water Capacity: 55 Gallons

Holding Tank: 57 Gal Gallons

Fuel Capacity: 250 Gal Gallons

Accommodations

Total Cabins: 1

Total Berths: 2

Total Heads: 1

Hull and Deck Information

Hull Material: Fiberglass

Engine Information

Engines: 2

Manufacturer: Yanmar

Engine Type: Inboard

Fuel Type: Diesel

PHOTOS

2



3



4



5



6



7



8



9



10



11



12



13



14



15



16



17



18



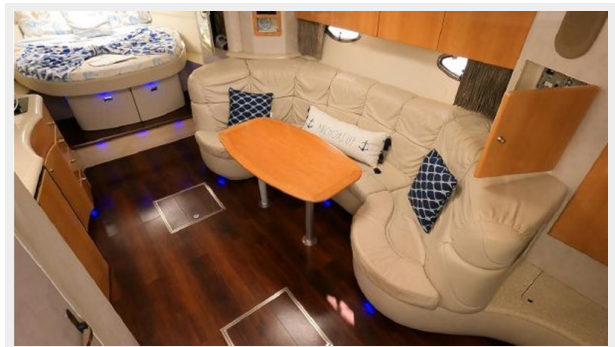
19



20



21



22



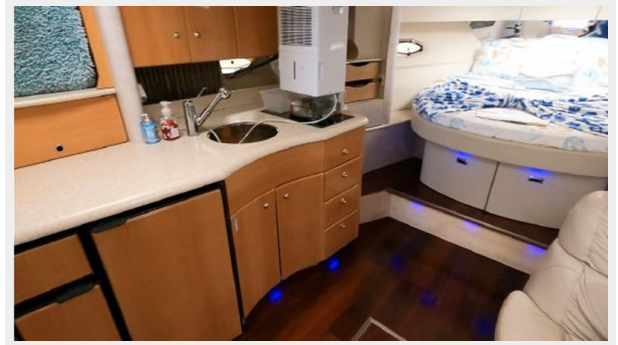
23



24



25



26



27



28



29



30



31



32



33



34



35



36



37



38



39



40



41



42



43



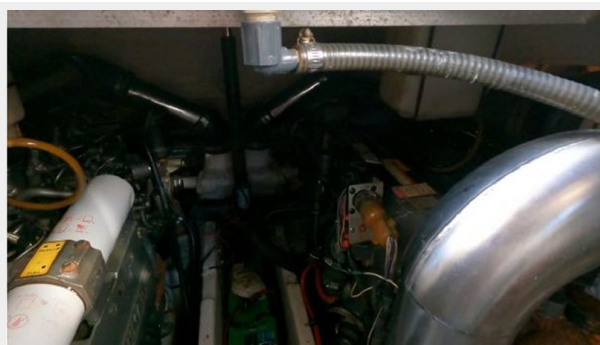
44



45



46



47



48



49



50



51



52



53



54



55



56



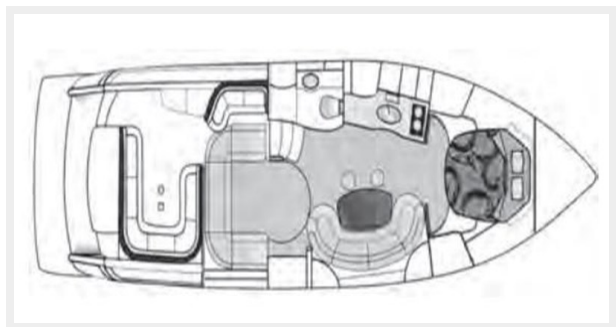
57



58



59



CONTACTS

Andrey Shestakov, leading yacht broker of the sales department of Shestakov Yacht Sales Inc. Shestakov Yacht Sales Inc., the official representative of the Miami/Fort Lauderdale FL headquarters.

Contact details

Email: andrey@shestakovyachtsales.com

Web: shestakovyachtsales.com/en/

Telephones

USA: +1(954)274-4435

Office hours

Monday – Saturday: **9:00 - 21:00** EDT

Sunday: **closed**

Address



Harbour Towne Marina, 850 NE 3rd St,
STE 213, Dania, FL 33004