

RANAWAY — PRESIDENT YACHTS



Builder: PRESIDENT YACHTS

Year Built: 1988

Model: trawler

Price: PRICE ON APPLICATION

Location: Canada

LOA: 37' (11.28mm)

Beam: 12

Max Draft: 3' 2" (0.97mm)

Our experienced yacht broker, Andrey Shestakov, will help you choose and buy a yacht that best suits your needs **Ranaway — PRESIDENT YACHTS** from our catalogue. Presently, at Shestakov Yacht Sales Inc., we have a wide variety of yachts available on our sale's list. We also work in close contact with all the big yacht manufacturers from all over the world.

If you would like to buy a yacht **Ranaway — PRESIDENT YACHTS** or would like help answering any questions concerning purchasing, selling or chartering a yacht, please call **+1(954)274-4435**

TABLE OF CONTENTS

| | |
|---------------------------|---|
| TABLE OF CONTENTS | 2 |
| SPECIFICATIONS | 4 |
| Overview | 4 |
| Basic Information | 4 |
| Dimensions | 4 |
| Accommodations | 4 |
| Hull and Deck Information | 4 |
| Engine Information | 5 |
| PHOTOS | 6 |
| Engines | 6 |
| Aft Head | 6 |
| Generator | 6 |
| Prop | 6 |
| Switch | 7 |
| Windless | 7 |
| Picture1 | 7 |
| Picture2 | 7 |
| Picture3 | 7 |
| Picture4 | 7 |
| Picture5 | 8 |
| Picture6 | 8 |
| Picture7 | 8 |
| Picture8 | 8 |
| Picture9 | 8 |
| Picture10 | 8 |
| Picture11 | 8 |
| CONTACTS | 9 |
| Contact details | 9 |

| | |
|--------------|---|
| Telephones | 9 |
| Office hours | 9 |
| Address | 9 |

SPECIFICATIONS

Overview

1988 President 37 Aft Cabin located in Booth Harbour Ontario.

Introduced in the mid 1980s, the President 37 Sundeck became popular with entry-level buyers thanks to her spacious interior and very attractive price. She was built in Taiwan on a solid fiberglass hull. The President's teak (or light oak) interior wood work is impressively finished, and the big wrap around cabin windows create a bright and surprisingly open salon. Outside, the aft deck is large enough for several deck chairs, and serviceable side decks provide easy access to the bow. A bow pulpit, swim platform, and hardtop were standard.

Basic Information

Category: trawler

Sub Category: Aft Cabin

Model Year: 1988

Year Built: 1988

Country: Canada

Dimensions

LOA: 37' (11.28mm)

Beam: 12

Max Draft: 3' 2" (0.97mm)

Accommodations

Total Cabins: 2

Hull and Deck Information

Hull Material: Fiberglass

Engine Information

Engines: 2

Manufacturer: Mercruiser

Engine Type: Inboard

Fuel Type: Gas

PHOTOS

Aft Head



Engines



Port engine



Generator



Prop



Switch



Windless



Picture1



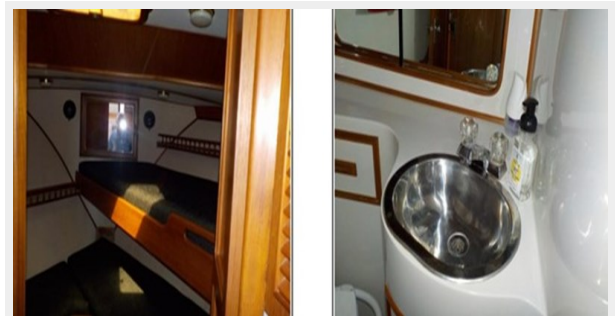
Picture2



Picture3



Picture4



Picture5



Picture6



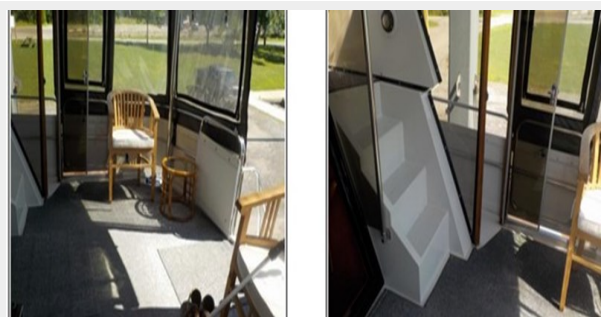
Picture7



Picture8



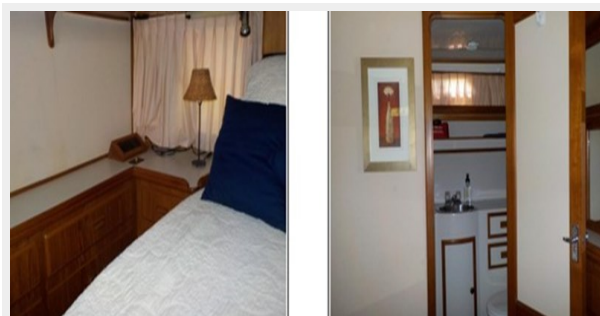
Picture9



Picture10



Picture11



CONTACTS

Andrey Shestakov, leading yacht broker of the sales department of Shestakov Yacht Sales Inc. Shestakov Yacht Sales Inc., the official representative of the Miami/Fort Lauderdale FL headquarters.

Contact details

Email: andrey@shestakovyachtsales.com

Web: shestakovyachtsales.com/en/

Telephones

USA: +1(954)274-4435

Office hours

Monday – Saturday: **9:00 - 21:00** EDT

Sunday: **closed**

Address



Harbour Towne Marina, 850 NE 3rd St,
STE 213, Dania, FL 33004