

## WHO DAT — COMPOSITE



**Builder:** COMPOSITE

**LOA:** 26' 4" (8.03mm)

**Year Built:** 2007

**Beam:** 9.5

**Model:** Boats

**Min Draft:** 2' (0.61mm)

**Price:** PRICE ON APPLICATION

**Location:** United States

Our experienced yacht broker, Andrey Shestakov, will help you choose and buy a yacht that best suits your needs **WHO DAT — COMPOSITE** from our catalogue. Presently, at Shestakov Yacht Sales Inc., we have a wide variety of yachts available on our sale's list. We also work in close contact with all the big yacht manufacturers from all over the world.

If you would like to buy a yacht **WHO DAT — COMPOSITE** or would like help answering any questions concerning purchasing, selling or chartering a yacht, please call **+1(954)274-4435**

# TABLE OF CONTENTS

TABLE OF CONTENTS	2
SPECIFICATIONS	5
Overview	5
Basic Information	5
Dimensions	5
Speed, Capacities and Weight	5
Hull and Deck Information	6
Engine Information	6
PHOTOS	7
2	7
3	7
4	7
5	7
6	7
7	7
8	8
9	8
10	8
11	8
12	8
13	8
14	9
15	9
16	9
17	9
18	9
19	9
20	10

---

21	10
22	10
23	10
24	10
25	10
26	11
27	11
28	11
29	11
30	11
31	11
32	12
33	12
34	12
35	12
36	12
37	12
38	13
39	13
40	13
41	13
42	13
43	13
44	14
45	14
46	14
47	14
48	14
49	14

---

---

50	15
51	15
52	15
CONTACTS	16
Contact details	16
Telephones	16
Office hours	16
Address	16

---

# SPECIFICATIONS

---

## Overview

---

This 26 Composite Yacht Center Console has been meticulously maintained with a open check book.

She is powered by a very economical, low burning Yanmar 315 HP Diesel with only 757 hours, and also has a Bow Thruster!

The 26 CYCC is built with wood free construction. The hull is molded with a propeller pocket for reduced draft, and better fuel economy

This boat was Completely Rewired in 2020, and New Electronics were added in 2020.

She is a head turner! This boat is turn key ready to go, and can be bought for a fraction of the cost of a new build.

A Double Axle Venture Trailer that was rebuilt in 2-2022 also goes with the boat.

Check out the FULL SPECS for more details and give us a call for more information, and to schedule an appointment to have a look for yourself.

---

## Basic Information

---

**Category:** Boats

**Sub Category:** Center Console

**Model Year:** 2007

**Year Built:** 2007

**Country:** United States

---

## Dimensions

---

**LOA:** 26' 4" (8.03mm)

**Beam:** 9.5

**Min Draft:** 2' (0.61mm)

---

## Speed, Capacities and Weight

---

**Fuel Capacity:** 120 Gal Gallons

---

## Hull and Deck Information

---

**Hull Material:** Fiberglass

---

## Engine Information

---

**Engines:** 1

**Manufacturer:** Yanmar

**Engine Type:** Inboard

**Fuel Type:** Diesel

# PHOTOS

2



3



4



5



6



7



8



9



10



11



12



13





14



15



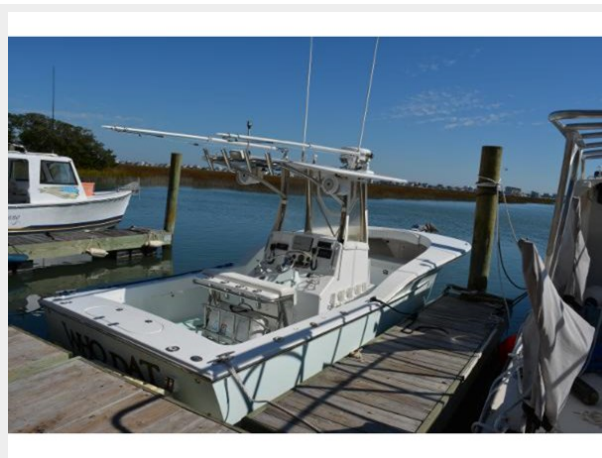
16



17



18



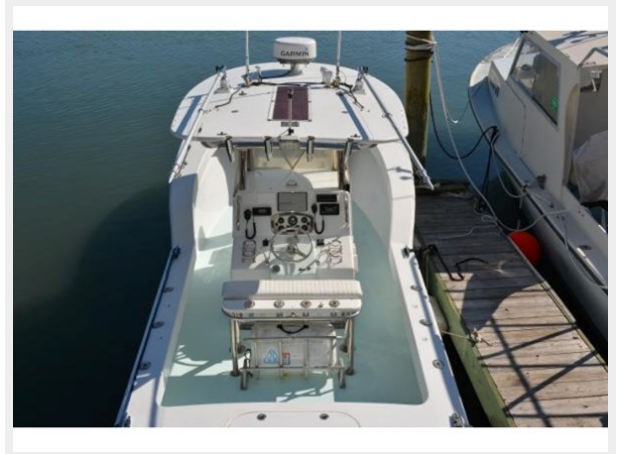
19



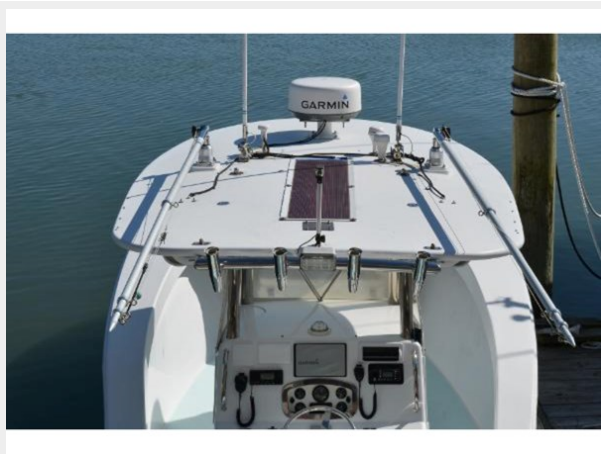
20



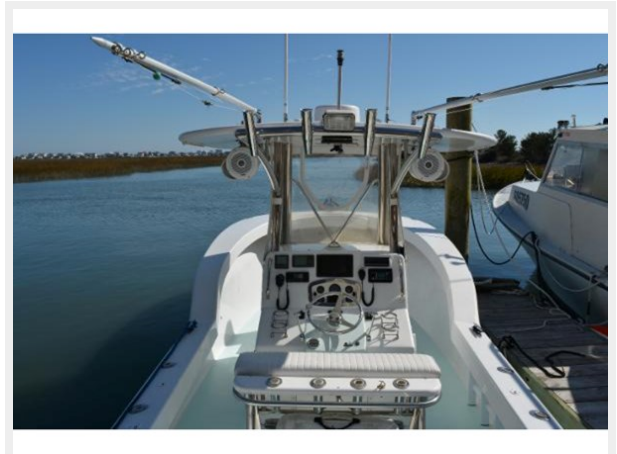
21



22



23



24



25



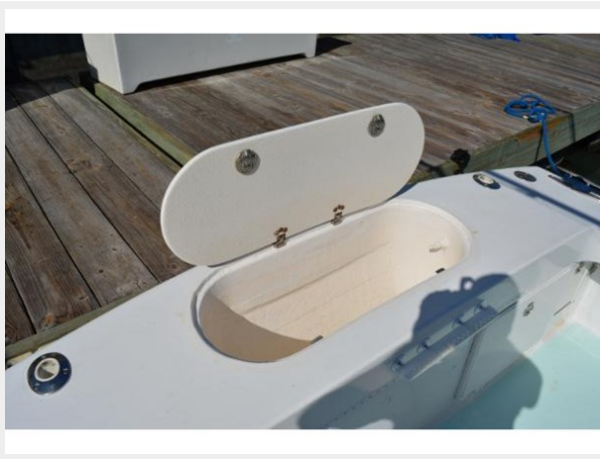
26



27



28



29



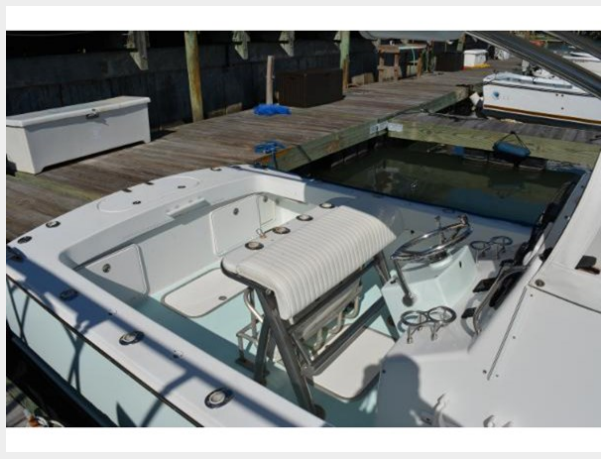
30



31



32



33



34



35



36



37



38



39



40



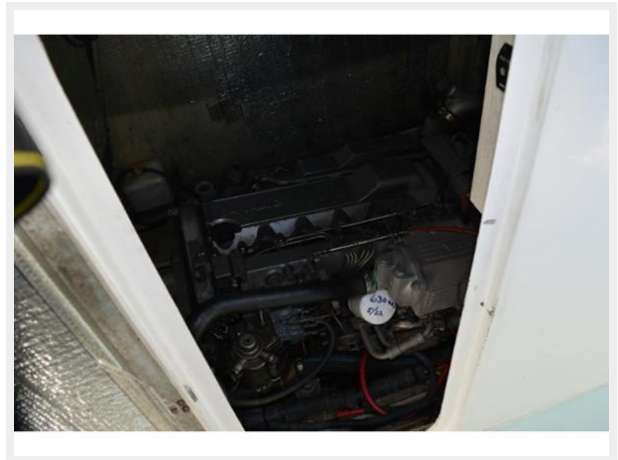
41



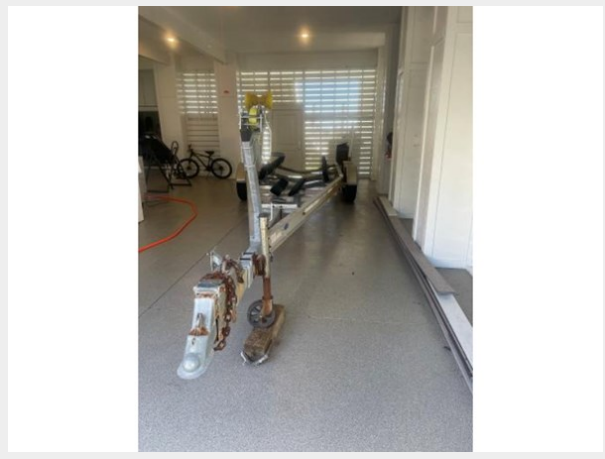
42



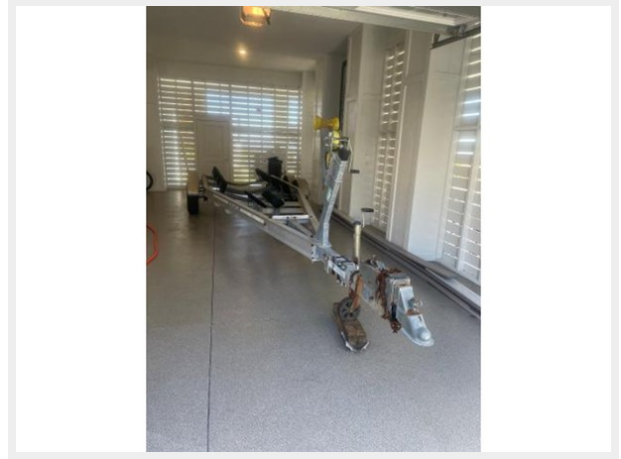
43



44



45



46



47



48



49



50



51



52



---

# CONTACTS

---

Andrey Shestakov, leading yacht broker of the sales department of Shestakov Yacht Sales Inc. Shestakov Yacht Sales Inc., the official representative of the Miami/Fort Lauderdale FL headquarters.

---

## Contact details

---

Email: [andrey@shestakovyachtsales.com](mailto:andrey@shestakovyachtsales.com)

Web: [shestakovyachtsales.com/en/](http://shestakovyachtsales.com/en/)

---

## Telephones

---

USA: +1(954)274-4435

---

## Office hours

---

Monday – Saturday: **9:00 - 21:00** EDT

Sunday: **closed**

---

## Address

---



Harbour Towne Marina, 850 NE 3rd St,  
STE 213, Dania, FL 33004