

MARTINI & ME — POST YACHTS



Builder: POST YACHTS

Year Built: 1981

Model: Sport Fisherman

Price: PRICE ON APPLICATION

Location: United States

LOA: 42' (12.8mm)

Beam: 15.75

Max Draft: 3' (0.91mm)

Cruise Speed: 15 Knots Kts. (17 MPH)

Max Speed: 20 Knots Kts. (23 MPH)

Our experienced yacht broker, Andrey Shestakov, will help you choose and buy a yacht that best suits your needs **Martini & Me — POST YACHTS** from our catalogue. Presently, at Shestakov Yacht Sales Inc., we have a wide variety of yachts available on our sale's list. We also work in close contact with all the big yacht manufacturers from all over the world.

If you would like to buy a yacht **Martini & Me — POST YACHTS** or would like help answering any questions concerning purchasing, selling or chartering a yacht, please call **+1(954)274-4435**

TABLE OF CONTENTS

TABLE OF CONTENTS	2
SPECIFICATIONS	5
Overview	5
Basic Information	5
Dimensions	5
Speed, Capacities and Weight	5
Accommodations	5
Hull and Deck Information	5
Engine Information	5
PHOTOS	6
1_2794176_1981_post_port_profile	6
0_2794176_1981_post	6
2_2794176_1981_post_stern_with_dinghy	6
3_2794176_1981_post_foredeck_view	6
4_2794176_1981_post_bow_pulpit	6
5_2794176_1981_post_foredeck_looking_aft	6
6_2794176_1981_post_life_raft	7
7_2794176_1981_post_foredeck_hatches	7
8_2794176_1981_post_spotlight	7
9_2794176_1981_post_walkway_stbd	7
10_2794176_1981_post_port_walkway	7
11_2794176_1981_post_stbd_side_deck	7
12_2794176_1981_post_port_side_deck	8
13_2794176_1981_post_bridge_access	8
14_2794176_1981_post_bridge_fwd	8
15_2794176_1981_post_helm	8
16_2794176_1981_post_helm	8
17_2794176_1981_post_lower_helm	8

18_2794176_1981_post_controls	9
19_2794176_1981_post_trim_tabs	9
20_2794176_1981_post_windlass_controls	9
21_2794176_1981_post_electronics	9
22_2794176_1981_post_chartplotterradar	9
23_2794176_1981_post_vhf	9
24_2794176_1981_post_depth_sounder	10
25_2794176_1981_post_aux_chart_plotter	10
26_2794176_1981_post_bridge_seating_fwd	10
27_2794176_1981_post_fwd_seat_storage	10
28_2794176_1981_post_bridge_aft	10
29_2794176_1981_post_fwd_isinglass	10
30_2794176_1981_post_stbd_isinglass	11
31_2794176_1981_post_port_isinglass	11
32_2794176_1981_post_cockpit	11
33_2794176_1981_post_cockpit_table	11
34_2794176_1981_post_cockpit_shore_power	11
35_2794176_1981_post_cockpit_heater	11
36_2794176_1981_post_cockpit_washdowns	12
37_2794176_1981_post_tuna_door	12
38_2794176_1981_post_cockpit_access	12
39_2794176_1981_post_cockpit_in_floor_storage	12
40_2794176_1981_post_cockpit_entry_door	12
41_2794176_1981_post_salon_entry	12
42_2794176_1981_post_port_salon	13
43_2794176_1981_post_salon_port_view	13
44_2794176_1981_post_salon_starboard_view	13
45_2794176_1981_post_salon_heat	13
46_2794176_1981_post_salon_ac	13

47_2794176_1981_post_salon_stereo	13
48_2794176_1981_post_galley	14
49_2794176_1981_post_galley	14
50_2794176_1981_post_galley_fridge	14
51_2794176_1981_post_galley	14
52_2794176_1981_post_full_bath	14
53_2794176_1981_post_master_bedroom	14
54_2794176_1981_post_stateroom_ac	15
55_2794176_1981_post_forward_berth	15
56_2794176_1981_post_companionway_looking_aft	15
57_2794176_1981_post_stbd_engine	15
58_2794176_1981_post_port_engine	15
59_2794176_1981_post_single_eng_hour_meter	15
60_2794176_1981_post_fireboy_suppression_system	16
61_2794176_1981_post_cockpit_remote_fire_suppression_pull_station	16
62_2794176_1981_post_ac_units	16
63_2794176_1981_post_stbd_racor	16
64_2794176_1981_post_port_racor	16
65_2794176_1981_post_solar_monitor	16
66_2794176_1981_post_solar_battery_minder	17
67_2794176_1981_post_solar_invertercontroller	17
68_2794176_1981_post_solar_panels	17
69_2794176_1981_post_main_electrical_panel	17
70_2794176_1981_post_dinghy	17
CONTACTS	18
Contact details	18
Telephones	18
Office hours	18
Address	18

SPECIFICATIONS

Overview

Produced between 1975 and 1983, the 42 Post Convertible is a Jersey style sport fisherman with a modified V configuration.

Martini & Me offers a spacious salon, large galley and 2 berths. She features 1 bathroom with a separate stall shower

A large open cockpit offers plenty of room for entertaining or fishing.

She would make an excellent live aboard or enjoy her for fishing and cruising.

Basic Information

Category: Sport Fisherman

Model Year: 1981

Year Built: 1981

Country: United States

Dimensions

LOA: 42' (12.8mm)

Beam: 15.75

Max Draft: 3' (0.91mm)

Speed, Capacities and Weight

Cruise Speed: 15 Knots Kts. (17 MPH)

Max Speed: 20 Knots Kts. (23 MPH)

Water Capacity: 120 Gallons

Holding Tank: 30 Gal Gallons

Fuel Capacity: 540 Gal Gallons

Accommodations

Total Cabins: 2

Total Heads: 1

Hull and Deck Information

Hull Material: Fiberglass

Engine Information

Engines: 1

Manufacturer: Detroit Diesel

PHOTOS

0_2794176_1981_post



1_2794176_1981_post_port_profile



2_2794176_1981_post_stern_with_dinghy



3_2794176_1981_post_foredeck_view



4_2794176_1981_post_bow_pulpit



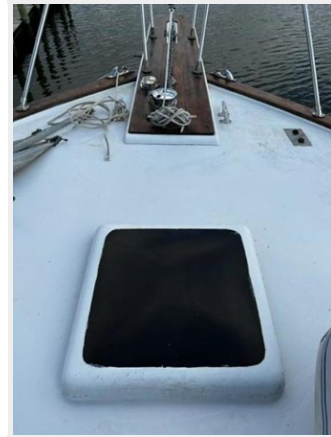
5_2794176_1981_post_foredeck_looking_aft



6_2794176_1981_post_life_raft



7_2794176_1981_post_foredeck_hatches



8_2794176_1981_post_spotlight



9_2794176_1981_post_walkway_stbd



10_2794176_1981_post_port_walkway



11_2794176_1981_post_stbd_side_deck



12_2794176_1981_post_port_side_deck



13_2794176_1981_post_bridge_access



14_2794176_1981_post_bridge_fwd



15_2794176_1981_post_helm



16_2794176_1981_post_helm



17_2794176_1981_post_lower_helm



18_2794176_1981_post_controls



19_2794176_1981_post_trim_tabs



20_2794176_1981_post_windlass_controls



21_2794176_1981_post_electronics



22_2794176_1981_post_chartplotterradar



23_2794176_1981_post_vhf



24_2794176_1981_post_depth_sounder



25_2794176_1981_post_aux_chart_plotter



26_2794176_1981_post_bridge_seating_fwd



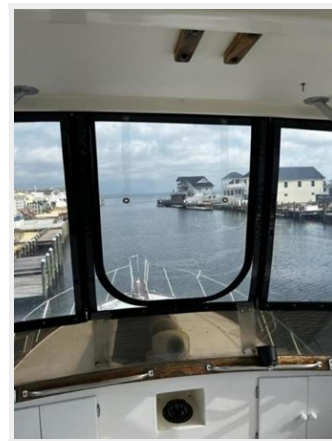
27_2794176_1981_post_fwd_seat_storage



28_2794176_1981_post_bridge_aft



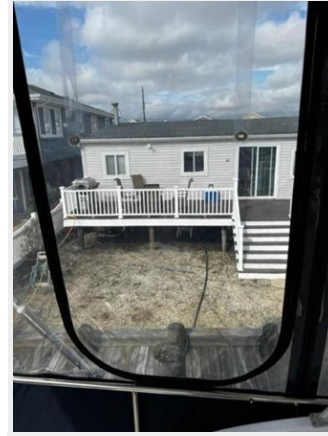
29_2794176_1981_post_fwd_isinglass



30_2794176_1981_post_stbd_isinglass



31_2794176_1981_post_port_isinglass



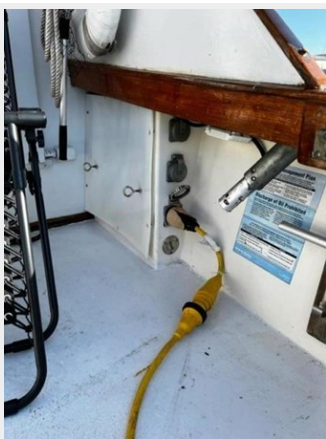
32_2794176_1981_post_cockpit



33_2794176_1981_post_cockpit_table



34_2794176_1981_post_cockpit_shore_power



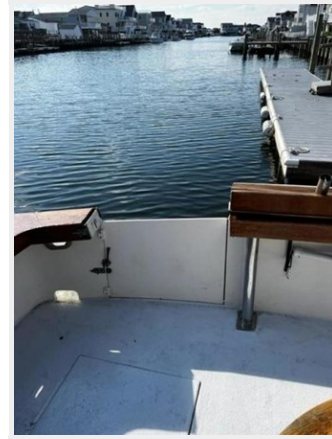
35_2794176_1981_post_cockpit_heater



36_2794176_1981_post_cockpit_washdowns



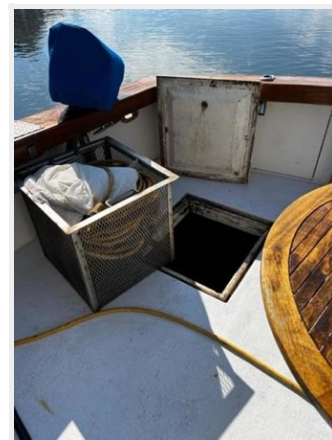
37_2794176_1981_post_tuna_door



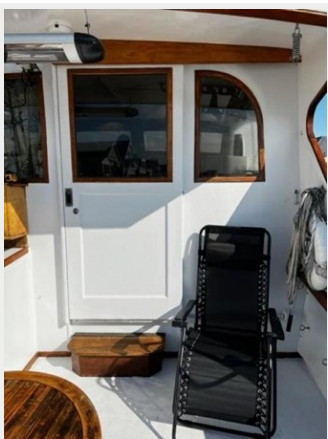
38_2794176_1981_post_cockpit_access



39_2794176_1981_post_cockpit_in_floor_storage



40_2794176_1981_post_cockpit_entry_door



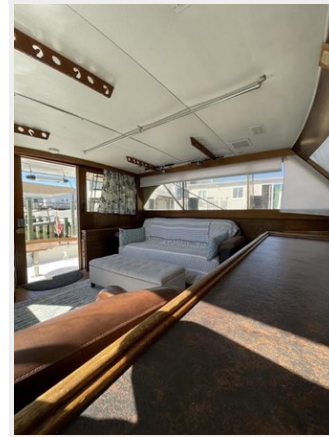
41_2794176_1981_post_salon_entry



42_2794176_1981_post_port_salon



43_2794176_1981_post_salon_port_view



44_2794176_1981_post_salon_starboard_view



45_2794176_1981_post_salon_heat



46_2794176_1981_post_salon_ac



47_2794176_1981_post_salon_stereo



48_2794176_1981_post_galley



49_2794176_1981_post_galley



50_2794176_1981_post_galley_fridge



51_2794176_1981_post_galley



52_2794176_1981_post_full_bath



53_2794176_1981_post_master_bedroom



54_2794176_1981_post_stateroom_ac



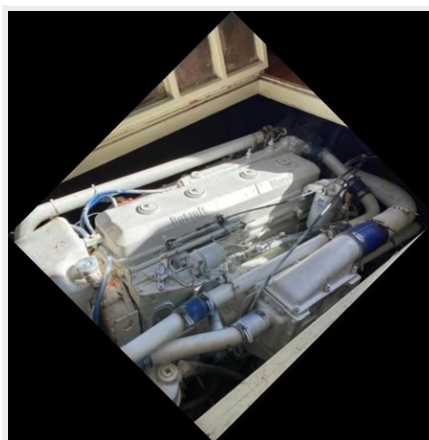
55_2794176_1981_post_forward_berth



56_2794176_1981_post_companionway_looking_aft



57_2794176_1981_post_stbd_engine



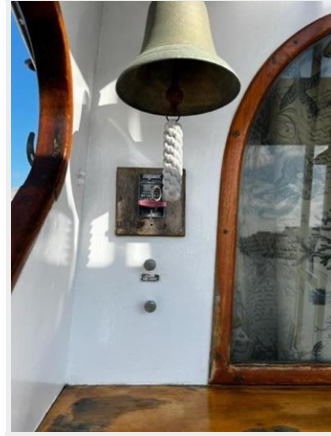
58_2794176_1981_post_port_engine



59_2794176_1981_post_single_eng_hour_meter



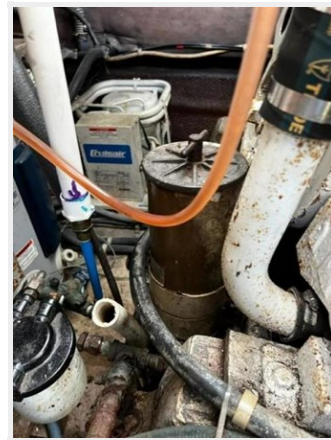
60_2794176_1981_post_fireboy_suppression_system 61_2794176_1981_post_cockpit_remote_fire_suppression_pull_station



62_2794176_1981_post_ac_units



63_2794176_1981_post_stbd_racor



64_2794176_1981_post_port_racor



65_2794176_1981_post_solar_monitor



66_2794176_1981_post_solar_battery_minder



67_2794176_1981_post_solar_invertercontroller



68_2794176_1981_post_solar_panels



69_2794176_1981_post_main_electrical_panel



70_2794176_1981_post_dinghy



CONTACTS

Andrey Shestakov, leading yacht broker of the sales department of Shestakov Yacht Sales Inc. Shestakov Yacht Sales Inc., the official representative of the Miami/Fort Lauderdale FL headquarters.

Contact details

Email:
andrey@shestakovyachtsales.com

Web: shestakovyachtsales.com/en/

Telephones

USA: **+1(954)274-4435**

Office hours

Monday – Saturday: **9:00 - 21:00 EDT**

Sunday: **closed**

Address



Harbour Towne Marina, 850 NE 3rd St,
STE 213, Dania, FL 33004