

2016 AZIMUT MAGELLANO 66 — AZIMUT YACHTS



Builder: AZIMUT YACHTS

Year Built: 2016

Model: Mega Yacht

Price: PRICE ON APPLICATION

Location: United States

LOA: 66' 11" (20.4mm)

Beam: 17.83

Cruise Speed: 16 Knots Kts. (18 MPH)

Max Speed: 22 Knots Kts. (25 MPH)

Our experienced yacht broker, Andrey Shestakov, will help you choose and buy a yacht that best suits your needs 2016 Azimut Magellano 66 — AZIMUT YACHTS from our catalogue. Presently, at Shestakov Yacht Sales Inc., we have a wide variety of yachts available on our sale's list. We also work in close contact with all the big yacht manufacturers from all over the world.

If you would like to buy a yacht 2016 Azimut Magellano 66 — AZIMUT YACHTS or would like help answering any questions concerning purchasing, selling or chartering a yacht, please call +1(954)274-4435

TABLE OF CONTENTS

TABLE OF CONTENTS	2
SPECIFICATIONS	3
Overview	3
Basic Information	3
Dimensions	4
Speed, Capacities and Weight	4
Accommodations	4
Hull and Deck Information	4
Engine Information	4
PHOTOS	5
CONTACTS	13
Contact details	13
Telephones	13
Office hours	13
Address	13

SPECIFICATIONS

Overview

This 66-foot mega-yacht features a unique “dual-mode hull,” with double chines, a wave-cutting vertical bow, and substantial forward volume for smoother and more efficient operation.

Two 800 HP Volvo Diesel Engines are powering the vessel, which allow it to cruise at 9 knots when travelling under full displacement and between 16 and 18 knots when on plane, with a top speed of 22 knots.

At its cruising speed, the AZIMUT MAGELLANO 66 has a range of 900 nautical miles, which is much more than any other boat this size.

Another noteworthy aspect of the AZIMUT MAGELLANO 66 is its interior, which gives you the impression of volumes on a much larger yacht, affording plenty of room to relax and socialize.

The main deck is equipped with a large sliding door at the bow, separating the saloon from the pilot station and galley. The style of the main saloon is modern yet refined, with wood paneling and neutral furnishings. It includes a bar, TV cabinet, dining table, an L-shaped sofa, and long banks of windows providing sweeping views.

The lower deck houses a full-beam master suite, two VIP cabins, and a fourth cabin that can be configured as a pantry. The boat sleeps eight guests in 4 sizeable cabins and two crew.

Exterior spaces on the main deck of the AZIMUT MAGELLANO 66 include a padded lounging area with table at the bow and a shaded seating and dining area aft. The exterior highlight is the flybridge, which is especially large for a boat this size.

It features a dining table, a sun pad, and enough space for lounge chairs, as well as a hard-top with opening sunroof providing shade for long stints at sea.

Basic Information

Category: Mega Yacht

Sub Category: Mega Yacht

Model Year: 2016

Year Built: 2016

Country: United States

Dimensions

LOA: 66' 11" (20.4mm)

Beam: 17.83

Speed, Capacities and Weight

Cruise Speed: 16 Knots Kts. (18 MPH)

Max Speed: 22 Knots Kts. (25 MPH)

Accommodations

Total Cabins: 4

Hull and Deck Information

Hull Material: Fiberglass

Engine Information

Engines: 2

Manufacturer: Volvo Penta

Engine Type: Inboard

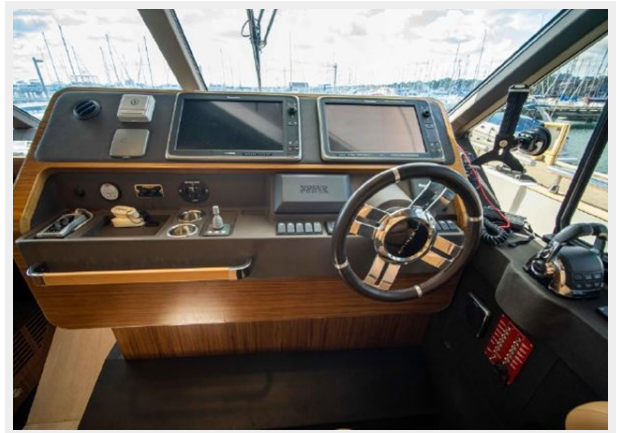
Fuel Type: Diesel

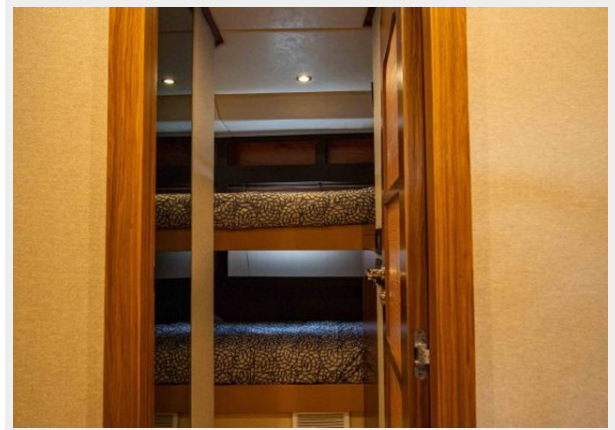
PHOTOS

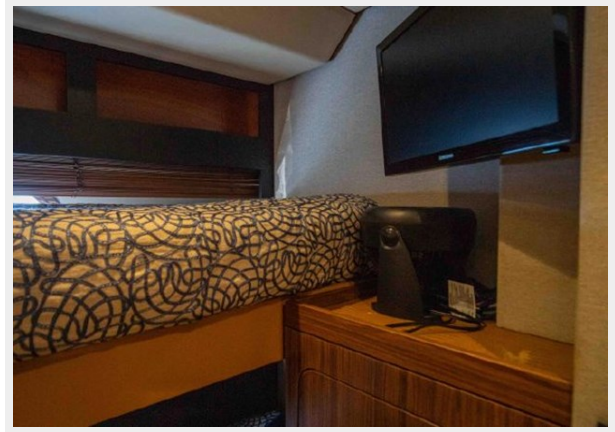




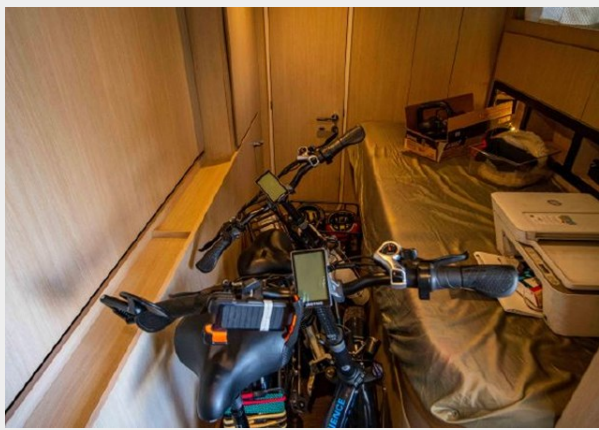
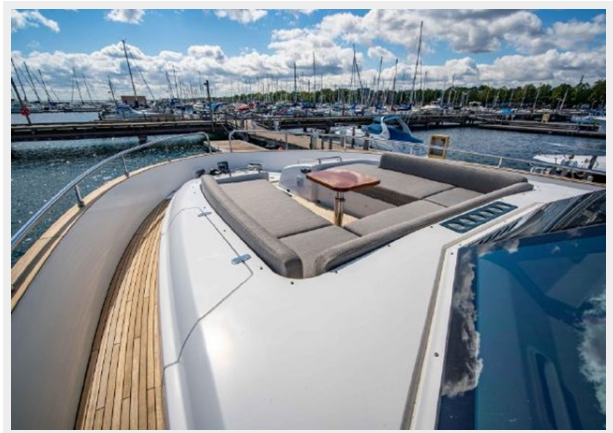
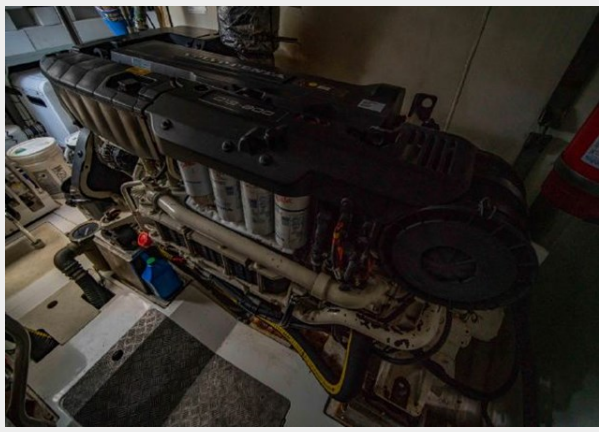












CONTACTS

Andrey Shestakov, leading yacht broker of the sales department of Shestakov Yacht Sales Inc. Shestakov Yacht Sales Inc., the official representative of the Miami/Fort Lauderdale FL headquarters.

Contact details

Email: andrey@shestakovyachtsales.com

Web: shestakovyachtsales.com/en/

Telephones

USA: +1(954)274-4435

Office hours

Monday – Saturday: **9:00 - 21:00** EDT

Sunday: **closed**

Address



Harbour Towne Marina, 850 NE 3rd St,
STE 213, Dania, FL 33004