

HIGHWAY 51 — SCOPINICH



Builder: SCOPINICH

Year Built: 2001

Model: Sport Fisherman

Price: PRICE ON APPLICATION

Location: United States

LOA: 35' (10.67m)

Beam: 12

Max Draft: 3' (0.91m)

Cruise Speed: 26 Knots Kts. (30 MPH)

Max Speed: 31 Knots Kts. (36 MPH)

Our experienced yacht broker, Andrey Shestakov, will help you choose and buy a yacht that best suits your needs **Highway 51 — SCOPINICH** from our catalogue. Presently, at Shestakov Yacht Sales Inc., we have a wide variety of yachts available on our sale's list. We also work in close contact with all the big yacht manufacturers from all over the world.

If you would like to buy a yacht **Highway 51 — SCOPINICH** or would like help answering any questions concerning purchasing, selling or chartering a yacht, please call **+1(954)274-4435**

TABLE OF CONTENTS

TABLE OF CONTENTS	2
SPECIFICATIONS	4
Overview	4
Basic Information	4
Dimensions	4
Speed, Capacities and Weight	4
Accommodations	5
Hull and Deck Information	5
Engine Information	5
PHOTOS	6
35-01 Scopinich Highway 51 running Profile3	6
35-01 Scopinich Highway 51 Cabin	6
35-01 Scopinich Highway 51 Berth	6
35-01 Scopinich Highway 51 Cabin2	6
35-01 Scopinich Highway 51 Head	7
35-01 Scopinich Highway 51 Electronics	7
35-01 Scopinich Highway 51 Electronics2	7
35-01 Scopinich Highway 51 Fighting Chair	7
35-01 Scopinich Highway 51 Aft2	8
35-01 Scopinich Highway 51 Rod Holder	8
35-01 Scopinich Highway 51 Wheel	8
35-01 Scopinich Highway 51 On Lift	8
35-01 Scopinich Highway 51 Running Profile2	9
35-01 Scopinich Highway 51 Dock Profile	9
CONTACTS	10
Contact details	10
Telephones	10
Office hours	10

Address

10

SPECIFICATIONS

Overview

Preliminary Listing

Professional Pictures will Follow

New to the market this 35 Scopinich Express is well maintained and recently updated with excellent service records. Designed and built to be easily maintained, economical to run and fish with the big boys. The 35 Scopinich surpasses all the above and more.

Recent updates:

- New Generator
- Bosch Tower
- Teak Decks and Covering Boards
- Garmin Electronics

Basic Information

Category: Sport Fisherman

Model Year: 2001

Year Built: 2001

Country: United States

Dimensions

LOA: 35' (10.67mm)

Beam: 12

Max Draft: 3' (0.91mm)

Speed, Capacities and Weight

Cruise Speed: 26 Knots Kts. (30 MPH)

Max Speed: 31 Knots Kts. (36 MPH)

Water Capacity: 40 Gallons

Holding Tank: 15 Gal Gallons

Fuel Capacity: 400 Gal Gallons

Accommodations

Total Berths: 1

Total Heads: 1

Hull and Deck Information

Hull Material: Fiberglass

Engine Information

Engines: 2

Manufacturer: Caterpillar

Engine Type: Inboard

Fuel Type: Diesel

PHOTOS

**35-01 Scopinich Highway 51 running
Profile3**



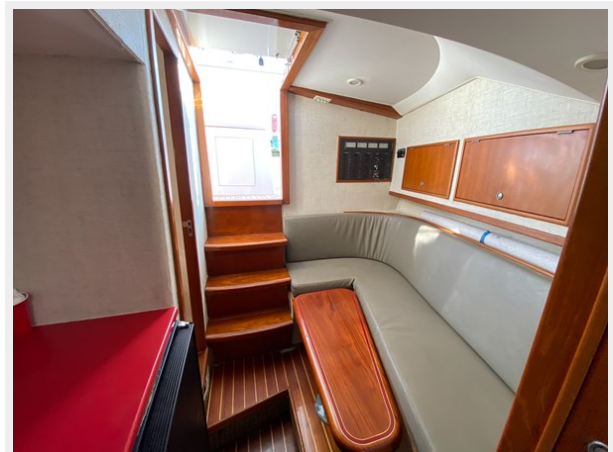
35-01 Scopinich Highway 51 Cabin



35-01 Scopinich Highway 51 Berth



35-01 Scopinich Highway 51 Cabin2



35-01 Scopinich Highway 51 Head



35-01 Scopinich Highway 51 Electronics



35-01 Scopinich Highway 51 Electronics2

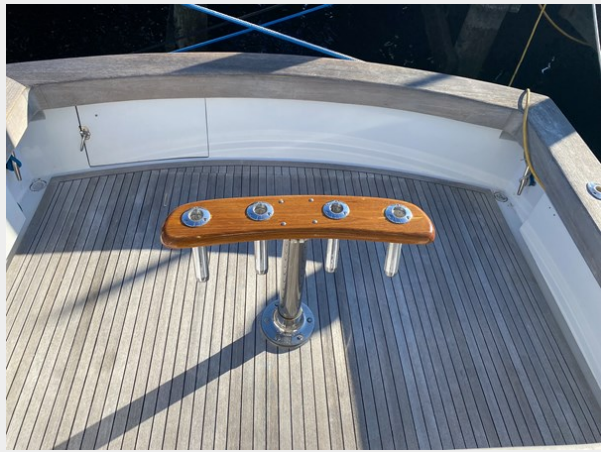


35-01 Scopinich Highway 51 Fighting Chair



35-01 Scopinich Highway 51 Aft2

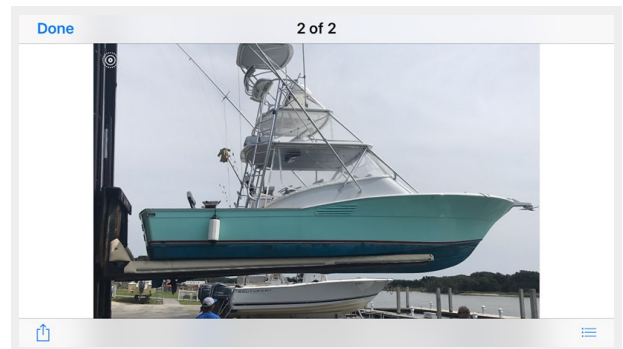
35-01 Scopinich Highway 51 Rod Holder



35-01 Scopinich Highway 51 Wheel



35-01 Scopinich Highway 51 On Lift



35-01 Scopinich Highway 51 Running Profile2



35-01 Scopinich Highway 51 Dock Profile



CONTACTS

Andrey Shestakov, leading yacht broker of the sales department of Shestakov Yacht Sales Inc. Shestakov Yacht Sales Inc., the official representative of the Miami/Fort Lauderdale FL headquarters.

Contact details

Email: andrey@shestakovyachtsales.com

Web: shestakovyachtsales.com/en/

Telephones

USA: +1(954)274-4435

Office hours

Monday – Saturday: **9:00 - 21:00** EDT

Sunday: **closed**

Address



Harbour Towne Marina, 850 NE 3rd St,
STE 213, Dania, FL 33004