

LADY GIGI — OCEAN ALEXANDER



Builder: OCEAN ALEXANDER

Year Built: 2009

Model: Motor Yacht

Price: PRICE ON APPLICATION

Location: United States

LOA: 74' (22.56m)

Beam: 20.25

Max Draft: 5' 6" (1.68m)

Cruise Speed: 18 Knots Kts. (21 MPH)

Max Speed: 23 Knots Kts. (26 MPH)

Our experienced yacht broker, Andrey Shestakov, will help you choose and buy a yacht that best suits your needs **LADY GIGI — OCEAN ALEXANDER** from our catalogue. Presently, at Shestakov Yacht Sales Inc., we have a wide variety of yachts available on our sale's list. We also work in close contact with all the big yacht manufacturers from all over the world.

If you would like to buy a yacht **LADY GIGI — OCEAN ALEXANDER** or would like help answering any questions concerning purchasing, selling or chartering a yacht, please call **+1(954)274-4435**

TABLE OF CONTENTS

TABLE OF CONTENTS	2
SPECIFICATIONS	3
Overview	3
Basic Information	3
Dimensions	3
Speed, Capacities and Weight	3
Accommodations	4
Hull and Deck Information	4
Engine Information	4
PHOTOS	5
CONTACTS	13
Contact details	13
Telephones	13
Office hours	13
Address	13

SPECIFICATIONS

Overview

Lady Gigi is a tasteful blend of styling and spacious accommodations. The 74' Ocean Alexander has pretty much set the standard for motor yachts in this size range. Featuring traditional Sakura Cherry satin finished interior joinery, 3 comfortable staterooms each with ensuite heads. Full beam Master, popular Country Kitchen Style Galley, on-deck day head, and a full weather lower Helm Station with a full compliment of electronics. Additional features are a large roomy Main Salon with a custom entertainment center, full walkaround decks with raised bulwarks for additional safety for docking and ease of exterior maintenance. Open air Aft Deck with casual dining. Separate Crew Quarters and Captain's Cabin Aft.

Basic Information

Category: Motor Yacht

Model Year: 2009

Year Built: 2009

Country: United States

Dimensions

LOA: 74' (22.56mm)

Beam: 20.25

Max Draft: 5' 6" (1.68mm)

Speed, Capacities and Weight

Cruise Speed: 18 Knots Kts. (21 MPH)

Cruise Speed Range: 1125

Max Speed: 23 Knots Kts. (26 MPH)

Gross Tonnage: 70 Pounds

Water Capacity: 350 Gallons

Holding Tank: 218 Gal Gallons

Fuel Capacity: 2500 Gal Gallons

Accommodations

Total Cabins: 3

Sleeps: 6

Total Heads: 5

Crew Cabin: 2

Hull and Deck Information

Hull Material: Fiberglass

Engine Information

Engines: 2

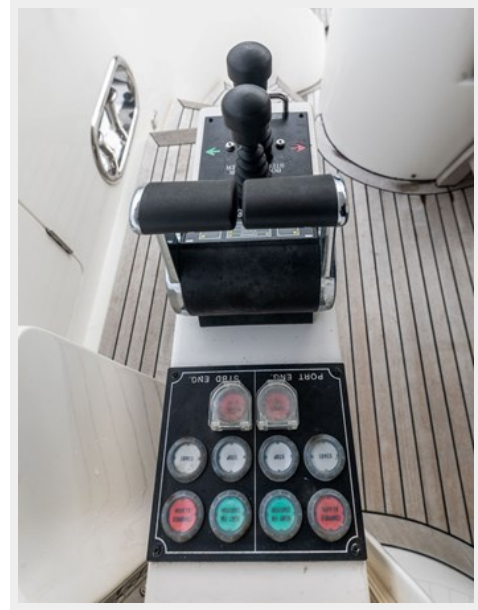
Manufacturer: MTU

Engine Type: I/O

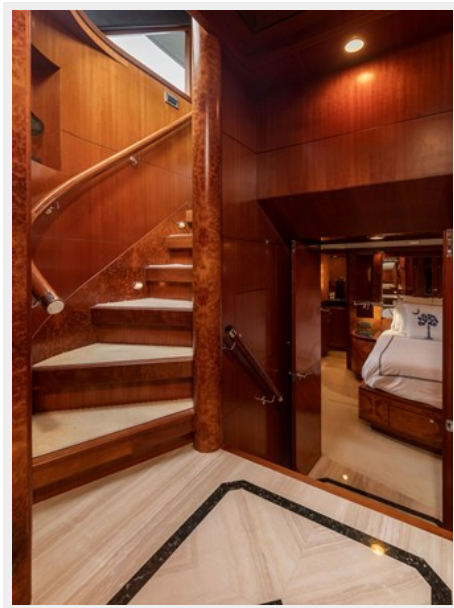
Fuel Type: Diesel

PHOTOS





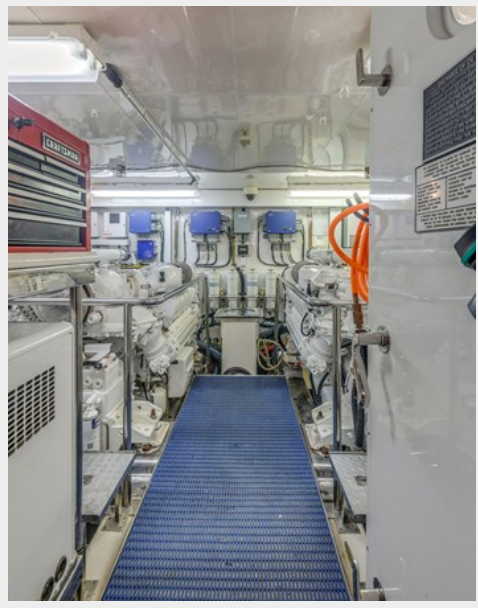












CONTACTS

Andrey Shestakov, leading yacht broker of the sales department of Shestakov Yacht Sales Inc. Shestakov Yacht Sales Inc., the official representative of the Miami/Fort Lauderdale FL headquarters.

Contact details

Email: andrey@shestakovyachtsales.com

Web: shestakovyachtsales.com/en/

Telephones

USA: +1(954)274-4435

Office hours

Monday – Saturday: **9:00 - 21:00** EDT

Sunday: **closed**

Address



Harbour Towne Marina, 850 NE 3rd St,
STE 213, Dania, FL 33004