

## ESSENCE OF CAYMAN — VICEM



**Builder:** VICEM

**Year Built:** 2006

**Model:** Motor Yacht

**Price:** PRICE ON APPLICATION

**Location:** United States

**LOA:** 85' (25.91mm)

**Beam:** 20.66

**Max Draft:** 5' 10" (1.78mm)

**Cruise Speed:** 16.51 Knots Kts. (19 MPH)

**Max Speed:** 21.72 Knots Kts. (25 MPH)

Our experienced yacht broker, Andrey Shestakov, will help you choose and buy a yacht that best suits your needs **ESSENCE OF CAYMAN — VICEM** from our catalogue. Presently, at Shestakov Yacht Sales Inc., we have a wide variety of yachts available on our sale's list. We also work in close contact with all the big yacht manufacturers from all over the world.

If you would like to buy a yacht **ESSENCE OF CAYMAN — VICEM** or would like help answering any questions concerning purchasing, selling or chartering a yacht, please call **+1(954)274-4435**

# TABLE OF CONTENTS

TABLE OF CONTENTS	2
SPECIFICATIONS	5
Basic Information	5
Dimensions	5
Speed, Capacities and Weight	5
Accommodations	5
Hull and Deck Information	5
Engine Information	5
PHOTOS	6
DJI_0834	6
DJI_0822	6
DJI_0816	6
DJI_0813	6
DJI_0807	6
DJI_0799	6
DJI_0784	7
DJI_0782	7
DJI_0775	7
DJI_0762	7
DJI_0753	7
DJI_0750	7
DJI_0747	7
DJI_0841	7
DJI_0824	8
DJI_0742	8
DJI_0740	8
DJI_0738	8
DJI_0734	8

---

DJI_0732	8
685A0506	9
DJI_0731	9
685A0504	9
685A0503	9
685A0502	9
685A0501	9
685A0500	10
685A0499	10
685A0497	10
685A0495	10
685A0493	10
685A0490	10
685A0489	11
685A0487	11
685A0485	11
685A0481	11
685A0480	11
685A0476	11
685A0475	12
685A0473	12
685A0472	12
685A0469	12
685A0467	12
685A0466	12
685A0463	13
685A0458	13
685A0457	13
685A0456	13

---

---

685A0454	13
685A0450	13
685A0449	14
685A0447	14
685A0444	14
685A0443	14
685A0439	14
685A0436	14
685A0434	15
685A0431	15
685A0429	15
685A0426	15
685A0424	15
685A0422	15
685A0420	16
685A0414	16
685A0411	16
685A0409	16
685A0407	16
CONTACTS	17
Contact details	17
Telephones	17
Office hours	17
Address	17

---

# SPECIFICATIONS

---

## Basic Information

---

**Category:** Motor Yacht

**Model Year:** 2006

**Year Built:** 2006

**Country:** United States

## Dimensions

---

**LOA:** 85' (25.91mm)

**Beam:** 20.66

**Max Draft:** 5' 10" (1.78mm)

## Speed, Capacities and Weight

---

**Cruise Speed:** 16.51 Knots Kts. (19 MPH)

**Max Speed:** 21.72 Knots Kts. (25 MPH)

**Water Capacity:** 500 Gallons

**Fuel Capacity:** 1895 Gal Gallons

## Accommodations

---

**Total Cabins:** 3

**Total Heads:** 4

## Hull and Deck Information

---

**Hull Material:** Composite

## Engine Information

---

**Engines:** 1

**Manufacturer:** MAN

# PHOTOS

DJI\_0834



DJI\_0822



DJI\_0816



DJI\_0813



DJI\_0807



DJI\_0799



DJI\_0784



DJI\_0782



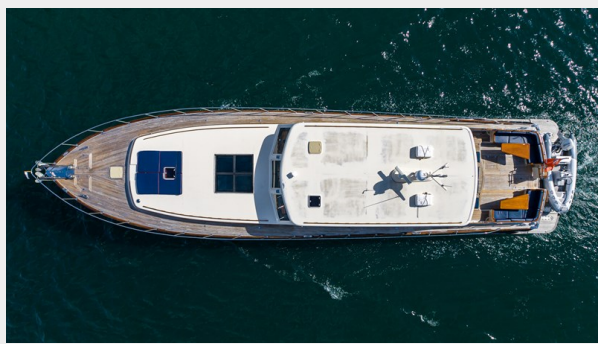
DJI\_0775



DJI\_0762



DJI\_0753



DJI\_0750



DJI\_0747



DJI\_0841



DJI\_0824



DJI\_0742



DJI\_0740



DJI\_0738



DJI\_0734



DJI\_0732





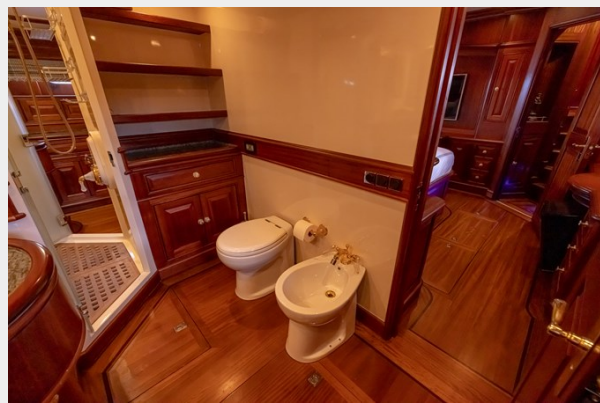
DJI\_0731



685A0506



685A0504



685A0503



685A0502



685A0501



685A0500



685A0499



685A0497



685A0495



685A0493



685A0490



685A0489



685A0487



685A0485



685A0481



685A0480



685A0476



685A0475



685A0473



685A0472



685A0469



685A0467



685A0466



685A0463



685A0458



685A0457



685A0456



685A0454



685A0450



685A0449



685A0447



685A0444



685A0443



685A0439



685A0436



685A0434



685A0431



685A0429



685A0426



685A0424



685A0422



685A0420



685A0414



685A0411



685A0409



685A0407





---

# CONTACTS

---

Andrey Shestakov, leading yacht broker of the sales department of Shestakov Yacht Sales Inc. Shestakov Yacht Sales Inc., the official representative of the Miami/Fort Lauderdale FL headquarters.

---

## Contact details

---

Email: [andrey@shestakovyachtsales.com](mailto:andrey@shestakovyachtsales.com)

Web: [shestakovyachtsales.com/en/](http://shestakovyachtsales.com/en/)

---

## Telephones

---

USA: +1(954)274-4435

---

## Office hours

---

Monday – Saturday: **9:00 - 21:00** EDT

Sunday: **closed**

---

## Address

---



Harbour Towne Marina, 850 NE 3rd St,  
STE 213, Dania, FL 33004