

VAGRANT — VIKING



Builder: VIKING

Year Built: 2002

Model: Sport Fisherman

Price: PRICE ON APPLICATION

Location: United States

LOA: 65' (19.81mm)

Beam: 19.25

Max Draft: 6' 1" (1.85mm)

Cruise Speed: 27 Knots Kts. (31 MPH)

Max Speed: 34 Knots Kts. (39 MPH)

Our experienced yacht broker, Andrey Shestakov, will help you choose and buy a yacht that best suits your needs **Vagrant — VIKING** from our catalogue. Presently, at Shestakov Yacht Sales Inc., we have a wide variety of yachts available on our sale's list. We also work in close contact with all the big yacht manufacturers from all over the world.

If you would like to buy a yacht **Vagrant — VIKING** or would like help answering any questions concerning purchasing, selling or chartering a yacht, please call **+1(954)274-4435**

TABLE OF CONTENTS

TABLE OF CONTENTS	2
SPECIFICATIONS	4
Overview	4
Basic Information	4
Dimensions	4
Speed, Capacities and Weight	4
Accommodations	4
Hull and Deck Information	5
Engine Information	5
PHOTOS	6
22 master stateroom	11
24 forward stateroom	11
25 forward stateroom	11
27 forward stateroom	12
26 forward stateroom	12
28 forward stateroom head	12
29 guest stateroom	12
30 guest stateroom	12
31 guest stateroom head	12
32 guest stateroom head	13
33 profile	13
34a enclosed flybridge aft deck	13
34b enclosed flybridge aft deck	13
35 enclosed flybridge aft deck	13
36 enclosed flybridge aft deck	13
37 tower	14
38 tower	14
39 tower	14

40 cockpit	14
41 cockpit	14
42 cockpit	14
43 cockpit	15
44 cockpit	15
45 cockpit	15
46 cockpit	15
47 engine room	15
48 engine room	15
49 engine room	16
50 engine room	16
51 engine room	16
52 engine room	16
54 engine room	16
53 engine room	16
CONTACTS	17
Contact details	17
Telephones	17
Office hours	17
Address	17

SPECIFICATIONS

Overview

2002 Viking 65' Enclosed Bridge Convertible Sportfish

Basic Information

Category: Sport Fisherman

Model Year: 2002

Year Built: 2002

Country: United States

Dimensions

LOA: 65' (19.81mm)

LWL: 69' 10" (21.29mm)

LOD: 65' 10" (20.07mm)

Beam: 19.25

Max Draft: 6' 1" (1.85mm)

Speed, Capacities and Weight

Cruise Speed: 27 Knots Kts. (31 MPH)

Max Speed: 34 Knots Kts. (39 MPH)

Water Capacity: 360 Gallons

Holding Tank: 200 Gal Gallons

Fuel Capacity: 2000 Gal Gallons

Accommodations

Total Cabins: 3

Sleeps: 7

Total Heads: 3

Hull and Deck Information

Hull Material: Fiberglass

Hull Configuration: Planing

Engine Information

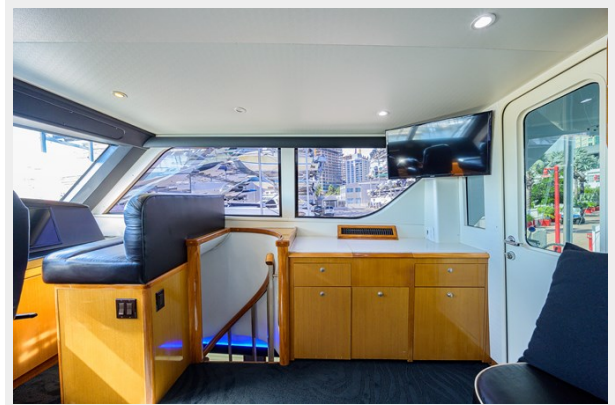
Engines: 2

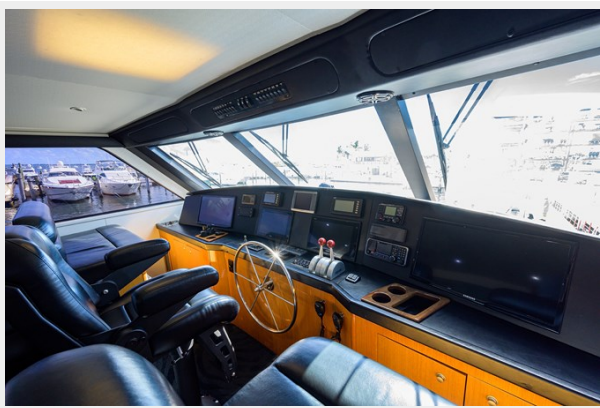
Manufacturer: MTU

Engine Type: Inboard

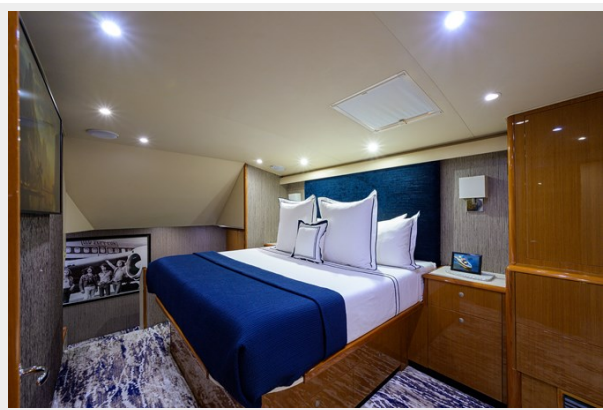
Fuel Type: Diesel

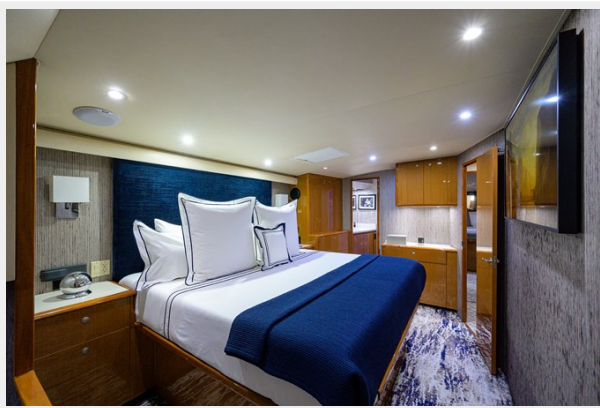
PHOTOS













22 master stateroom



24 forward stateroom

25 forward stateroom



26 forward stateroom



27 forward stateroom



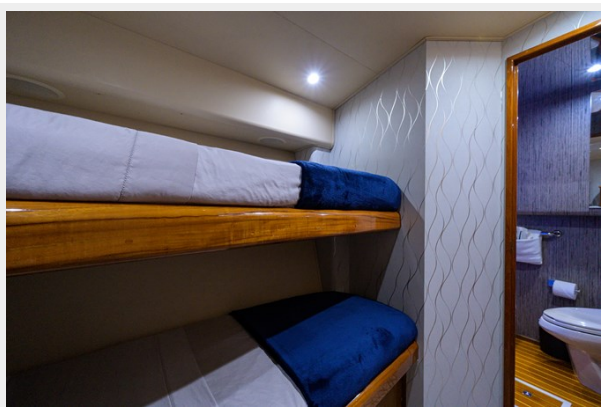
28 forward stateroom head



29 guest stateroom



30 guest stateroom



31 guest stateroom head



32 guest stateroom head



33 profile



34a enclosed flybridge aft deck



34b enclosed flybridge aft deck



35 enclosed flybridge aft deck



36 enclosed flybridge aft deck



37 tower



38 tower



39 tower



40 cockpit



41 cockpit



42 cockpit



43 cockpit



44 cockpit



45 cockpit



46 cockpit



47 engine room



48 engine room



49 engine room



50 engine room



51 engine room



52 engine room



53 engine room



54 engine room



CONTACTS

Andrey Shestakov, leading yacht broker of the sales department of Shestakov Yacht Sales Inc. Shestakov Yacht Sales Inc., the official representative of the Miami/Fort Lauderdale FL headquarters.

Contact details

Email: andrey@shestakovyachtsales.com

Web: shestakovyachtsales.com/en/

Telephones

USA: +1(954)274-4435

Office hours

Monday – Saturday: **9:00 - 21:00** EDT

Sunday: **closed**

Address



Harbour Towne Marina, 850 NE 3rd St,
STE 213, Dania, FL 33004