

ARCHIMEDES II — SEA RAY



Судостроитель: SEA RAY

Год постройки: 2004

Модель: Моторная яхта

Цена: **ЦЕНА ЯХТЫ ПО ЗАПРОСУ**

Местонахождение: United States

Длина общая: 39' (11.89mm)

Ширина: 14.25

Макс. осадка: 3' (0.91mm)

Крейс. скорость: 21 Knots Kts. (24 MPH)

Макс. скорость: 27 Knots Kts. (31 MPH)

Купить **Archimedes II — SEA RAY** а также выбрать подходящую вам яхту из нашего каталога яхт вам поможет опытный яхтенный брокер Андрей Шестаков. На сегодняшний день компания **Shestakov Yacht Sales Inc.** имеет большое количество яхт в собственном списке продаж, а также тесно сотрудничает со всеми крупными яхтенными производителями по всему миру.

Для того чтобы купить яхту **Archimedes II — SEA RAY** а также проконсультироваться по любому вопросу связанному с покупкой, продажей, чартером яхт позвоните по телефону **+7(918)465-66-44**.

ОГЛАВЛЕНИЕ

ОГЛАВЛЕНИЕ	2
ХАРАКТЕРИСТИКИ	7
Обзор	7
Основная информация	7
Размеры	7
Скорость, вместимость и масса	8
Размещение	8
Корпус и палуба	8
Информация о двигателе	8
ФОТОГРАФИИ	9
1 Archimedes II 2004 Sea Ray 390MY Port Profile	9
2 Archimedes II 2004 Sea Ray 390MY Port Aft Profile	9
3 Archimedes II 2004 Sea Ray 390MY Fwd Port Profile	9
4 Archimedes II 2004 Sea Ray 390MY Starboard Profile Pic	9
5 Archimedes II 2004 Sea Ray 390MY Fwd Starboard Pic	10
6 Archimedes II 2004 Sea Ray 390 MY Access to Bridge	10
7 Archimedes II 2004 Sea Ray 390 MY Bridge 4	10
8 Archimedes II 2004 Sea Ray 390 MY Bridge 5	10
9 Archimedes II 2004 Sea Ray 390 MY Bridge 6	11
10 Archimedes II 2004 Sea Ray 390 MY Bridge 7	11
11 Archimedes II 2004 Sea Ray 390 MY Bridge 2	11
12 Archimedes II 2004 Sea Ray 390 MY Bridge 1	11
13 Archimedes II 2004 Sea Ray 390 MY Bridge 3	12
14 Archimedes II 2004 Sea Ray 390 MY Helm seating	12
15 Archimedes II 2004 Sea Ray 390 MY Helm 1	12
16 Archimedes II 2004 Sea Ray 390 MY Helm 3	12
17 Archimedes II 2004 Sea Ray 390 MY Helm 4	13
18 Archimedes II 2004 Sea Ray 390 MY Helm 5	13

19 Archimedes II 2004 Sea Ray 390 MY Helm 6	13
20 Archimedes II 2004 Sea Ray 390 MY Helm 7	13
21 Archimedes II 2004 Sea Ray 390 MY Helm 8	14
22 Archimedes II 2004 Sea Ray 390 MY Foredeck 3	14
23 Archimedes II 2004 Sea Ray 390 MY Foredeck 2	14
24 Archimedes II 2004 Sea Ray 390 MY foredeck 1	14
25 Archimedes II 2004 Sea Ray 390 MY Foredeck 4	15
26 Archimedes II 2004 Sea Ray 390 MY Salon 1	15
27 Archimedes II 2004 Sea Ray 390 MY Salon 4	15
29 Archimedes II 2004 Sea Ray 390 MY Salon 3	15
30 Archimedes II 2004 Sea Ray 390 MY Salon 5	16
31 Archimedes II 2004 Sea Ray 390 MY Salon 9	16
33 Archimedes II 2004 Sea Ray 390 MY Salon 6	16
32 Archimedes II 2004 Sea Ray 390 MY Salon 10	16
34 Archimedes II 2004 Sea Ray 390 MY Salon 12	17
34.1 Archimedes II 2004 Sea Ray 390 MY Entertainment Center	17
35 Archimedes II 2004 Sea Ray 390 MY Salon 7	17
35.1 Archimedes II 2004 Sea Ray 390 MY Central Vacuum	17
35.2 Archimedes II 2004 Sea Ray 390 MY Control Panel	18
36 Archimedes II 2004 Sea Ray 390 MY Galley 2	18
37 Archimedes II 2004 Sea Ray 390 MY Galley 1	18
38 Archimedes II 2004 Sea Ray 390 MY Galley 4	18
39 Archimedes II 2004 Sea Ray 390 MY Galley 5	19
40 Archimedes II 2004 Sea Ray 390 MY Galley 6	19
41 Archimedes II 2004 Sea Ray 390 MY Galley 7	19
42 Archimedes II 2004 Sea Ray 390 MY Galley 8	19
43 Archimedes II 2004 Sea Ray 390 MY Galley 9	20
44 Archimedes II 2004 Sea Ray 390 MY laundry 1	20
45 Archimedes II 2004 Sea Ray 390 MY Laundry 2	20

46 Archimedes II 2004 Sea Ray 390 MY Galley 3	20
47 Archimedes II 2004 Sea Ray 390 MY FWD cabin 1	21
48 Archimedes II 2004 Sea Ray 390 MY FWD Cabin 2	21
49 Archimedes II 2004 Sea Ray 390 MY FWD Cabin 3	21
50 Archimedes II 2004 Sea Ray 390 MY FWD Cabin 4	21
51 Archimedes II 2004 Sea Ray 390 MY FWD Cabin 5	22
52 Archimedes II 2004 Sea Ray 390 MY FWD Cabin 7	22
53 Archimedes II 2004 Sea Ray 390 MY FWD Cabin 8	22
54 Archimedes II 2004 Sea Ray 390 MY FWD Cabin 9	22
55 Archimedes II 2004 Sea Ray 390 MY FWD Cabin 10	23
56 Archimedes II 2004 Sea Ray 390 MY FWD Cabin 11	23
57 Archimedes II 2004 Sea Ray 390 MY FWD Cabin 6	23
58 Archimedes II 2004 Sea Ray 390 MY FWD Cabin 12	23
59 Archimedes II 2004 Sea Ray 390 MY FWD Head 1	24
60 Archimedes II 2004 Sea Ray 390 MY Aft cabin 2	24
60.1 Archimedes II 2004 Sea Ray 390 MY Aft Cabin 1	24
61 Archimedes II 2004 Sea Ray 390 MY Aft Cabin 4	24
62 Archimedes II 2004 Sea Ray 390 MY Aft Cabin 3	25
63 Archimedes II 2004 Sea Ray 390 MY Aft Cabin 5	25
64 Archimedes II 2004 Sea Ray 390 MY Aft Cabin 6	25
65 Archimedes II 2004 Sea Ray 390 MY Aft Cabin 9	25
66 Archimedes II 2004 Sea Ray 390 MY Aft Cabin 10	26
67 Archimedes II 2004 Sea Ray 390 MY Aft Cabin 10	26
68 Archimedes II 2004 Sea Ray 390 MY Aft Cabin 12	26
69 Archimedes II 2004 Sea Ray 390 MY Aft Cabin 13	26
70 Archimedes II 2004 Sea Ray 390 MY Aft Cabin 14	27
71 Archimedes II 2004 Sea Ray 390 MY Aft Head	27
72 Archimedes II 2004 Sea Ray 390 MY Aft Head Storage	27
73 Archimedes II 2004 Sea Ray 390 MY Aft shower	27

75 Archimedes II 2004 Sea Ray 390 MY Engine room 2	28
74 Archimedes II 2004 Sea Ray 390 MY Engine Room 1	28
76 Archimedes II 2004 Sea Ray 390 MY Engine Room 3	28
77 Archimedes II 2004 Sea Ray 390 MY Engine Room 4	28
78 Archimedes II 2004 Sea Ray 390 MY Engine Room 5	29
79 Archimedes II 2004 Sea Ray 390 MY Engine room 6	29
80 Archimedes II 2004 Sea Ray 390 MY Engine Room 7	29
81 Archimedes II 2004 Sea Ray 390 MY Engine Room 8	29
82 Archimedes II 2004 Sea Ray 390 MY Engine Room 9	30
83 Archimedes II 2004 Sea Ray 390 MY Engine Room 10	30
84 Archimedes II 2004 Sea Ray 390 MY Engine room 11	30
85 Archimedes II 2004 Sea Ray 390 MY Engine Room 10	30
86 Archimedes II 2004 Sea Ray 390 MY engine room 12	31
87 Archimedes II 2004 Sea Ray 390 MY model plate	31
88 Archimedes II 2004 Sea Ray 390 MY on the hard 1	31
89 Archimedes II 2004 Sea Ray 390 MY on the hard 2	31
91 Archimedes II 2004 Sea Ray 390 MY on the hard 4	32
90 Archimedes II 2004 Sea Ray 390 MY on the hard 3	32
91 Archimedes II 2004 Sea Ray 390 MY on the hard 6	32
92 Archimedes II 2004 Sea Ray 390 MY on the hard 7	32
93 Archimedes II 2004 Sea Ray 390 MY on the hard 7	33
94 Archimedes II 2004 Sea Ray 390 MY Dinghy 1	33
95 Archimedes II 2004 Sea Ray 390 MY Dinghy 2	33
96 Archimedes II 2004 Sea Ray 390 MY Dinghy 3	33
97 Archimedes II 2004 Sea Ray 390 MY dinghy motor	34
КОНТАКТЫ	35
Контактная информация	35
Телефоны	35
Время работы	35

Адрес

35

ХАРАКТЕРИСТИКИ

Обзор

"Turn Key" for a weekender, live aboard or cruising/Looping. Owner says she purrs at slow cruise for lower fuel consumption but loves to get up and go on-plane as the mood (or weather!) strikes.

She comes with all bedding, dishes, cutlery, pots and pans. Original Sea Ray linens and comforter in Master and guest cabins. Ample storage located throughout the forward, aft cabins, galley, salon, cockpit, and transom.

Archimedes II's owner recently crossed their wake in Portsmouth, VA and prepped the boat for her next owner. She has spent a majority of her life in a fresh water covered slip and her condition reflects the same. You will not be disappointed in her condition or performance.

She also includes a high field dinghy and sea wise davit only a year old!

She just ran down the east coast to Savannah and performed beautifully. Cruising speed is about 24mph at 2250 RPM's. She handles the chop of running outside as well as she does the inland waterways.

Основная информация

Тип судна: Моторная яхта

Модельный год: 2004

Год постройки: 2004

Страна: United States

Размеры

Длина общая: 39' (11.89mm)

Ширина: 14.25

Макс. осадка: 3' (0.91mm)

Скорость, вместимость и масса

Крейс. скорость: 21 Knots Kts. (24 MPH) **Макс. скорость:** 27 Knots Kts. (31 MPH)

Вместимость воды: 100 Gallons

Вместимость сточного бака: 54 Gal
Gallons

Объем топливного бака: 300 Gal Gallons

Размещение

Всего кают: 2

Спальные места: 6

Всего ком. состава: 2

Корпус и палуба

Материал корпуса: Fiberglass

Информация о двигателе

Двигатели: 2

Производитель: Cummins

Тип двигателя: Inboard

Тип топлива: Diesel

ФОТОГРАФИИ

1 Archimedes II 2004 Sea Ray 390MY Port Profile



2 Archimedes II 2004 Sea Ray 390MY Port Aft Profile



3 Archimedes II 2004 Sea Ray 390MY Fwd Port Profile



4 Archimedes II 2004 Sea Ray 390MY Starboard Profile Pic



**5 Archimedes II 2004 Sea Ray 390MY Fwd
Starboard Pic**



**6 Archimedes II 2004 Sea Ray 390 MY
Access to Bridge**



**7 Archimedes II 2004 Sea Ray 390 MY
Bridge 4**



**8 Archimedes II 2004 Sea Ray 390 MY
Bridge 5**



**9 Archimedes II 2004 Sea Ray 390 MY
Bridge 6**



**10 Archimedes II 2004 Sea Ray 390 MY
Bridge 7**



**11 Archimedes II 2004 Sea Ray 390 MY
Bridge 2**



**12 Archimedes II 2004 Sea Ray 390 MY
Bridge 1**



13 Archimedes II 2004 Sea Ray 390 MY
Bridge 3



14 Archimedes II 2004 Sea Ray 390 MY Helm
seating



15 Archimedes II 2004 Sea Ray 390 MY Helm 16 Archimedes II 2004 Sea Ray 390 MY Helm
1 3



17 Archimedes II 2004 Sea Ray 390 MY Helm 18 Archimedes II 2004 Sea Ray 390 MY Helm

4



5



19 Archimedes II 2004 Sea Ray 390 MY Helm 20 Archimedes II 2004 Sea Ray 390 MY Helm

6



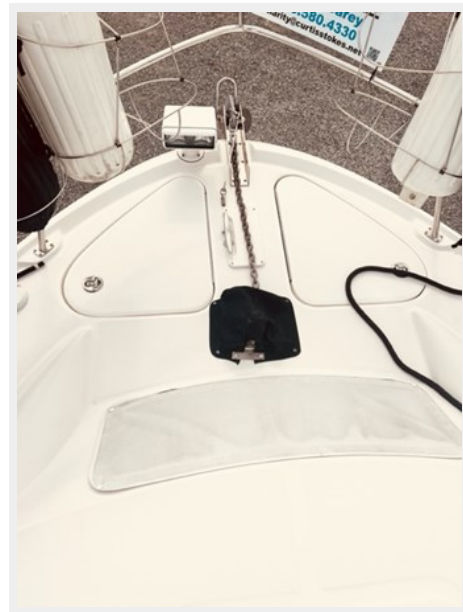
7



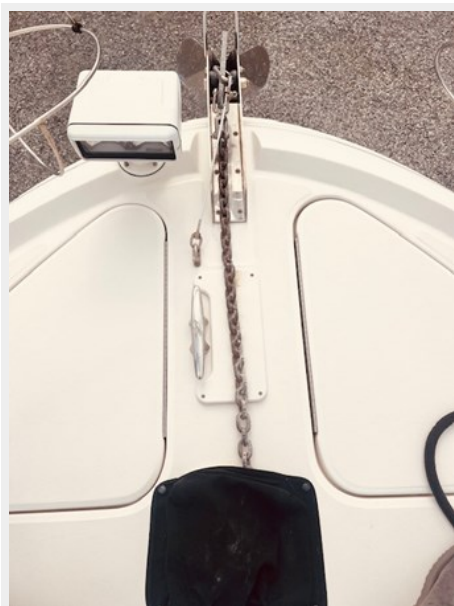
21 Archimedes II 2004 Sea Ray 390 MY Helm
8



22 Archimedes II 2004 Sea Ray 390 MY
Foredeck 3



23 Archimedes II 2004 Sea Ray 390 MY
Foredeck 2



24 Archimedes II 2004 Sea Ray 390 MY
foredeck 1



**25 Archimedes II 2004 Sea Ray 390 MY
Foredeck 4**



**26 Archimedes II 2004 Sea Ray 390 MY
Salon 1**



**27 Archimedes II 2004 Sea Ray 390 MY
Salon 4**



**29 Archimedes II 2004 Sea Ray 390 MY
Salon 3**



**30 Archimedes II 2004 Sea Ray 390 MY
Salon 5**



**31 Archimedes II 2004 Sea Ray 390 MY
Salon 9**



**32 Archimedes II 2004 Sea Ray 390 MY
Salon 10**



**33 Archimedes II 2004 Sea Ray 390 MY
Salon 6**



**34 Archimedes II 2004 Sea Ray 390 MY
Salon 12**



**34.1 Archimedes II 2004 Sea Ray 390 MY
Entertainment Center**



**35 Archimedes II 2004 Sea Ray 390 MY
Salon 7**



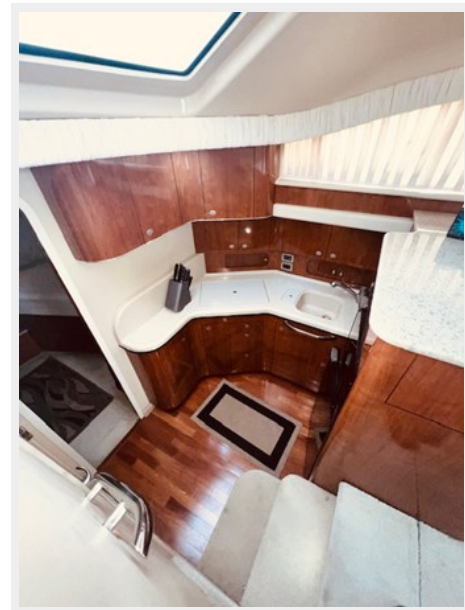
**35.1 Archimedes II 2004 Sea Ray 390 MY
Central Vacuum**



**35.2 Archimedes II 2004 Sea Ray 390 MY
Control Panel**



**36 Archimedes II 2004 Sea Ray 390 MY
Galley 2**



**37 Archimedes II 2004 Sea Ray 390 MY
Galley 1**



**38 Archimedes II 2004 Sea Ray 390 MY
Galley 4**



**39 Archimedes II 2004 Sea Ray 390 MY
Galley 5**



**40 Archimedes II 2004 Sea Ray 390 MY
Galley 6**



**41 Archimedes II 2004 Sea Ray 390 MY
Galley 7**



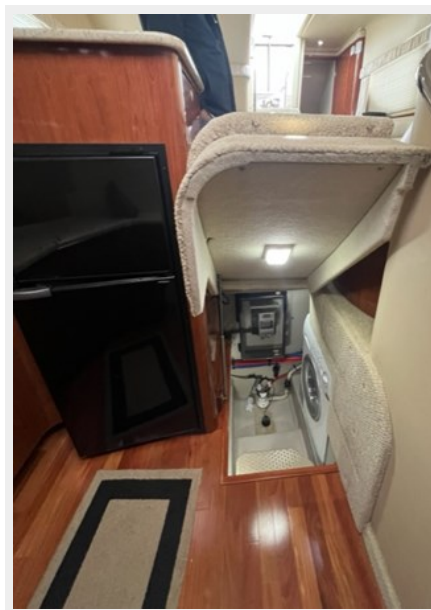
**42 Archimedes II 2004 Sea Ray 390 MY
Galley 8**



**43 Archimedes II 2004 Sea Ray 390 MY
Galley 9**



**44 Archimedes II 2004 Sea Ray 390 MY
laundry 1**



**45 Archimedes II 2004 Sea Ray 390 MY
Laundry 2**



**46 Archimedes II 2004 Sea Ray 390 MY
Galley 3**



47 Archimedes II 2004 Sea Ray 390 MY FWD cabin 1 48 Archimedes II 2004 Sea Ray 390 MY FWD Cabin 2



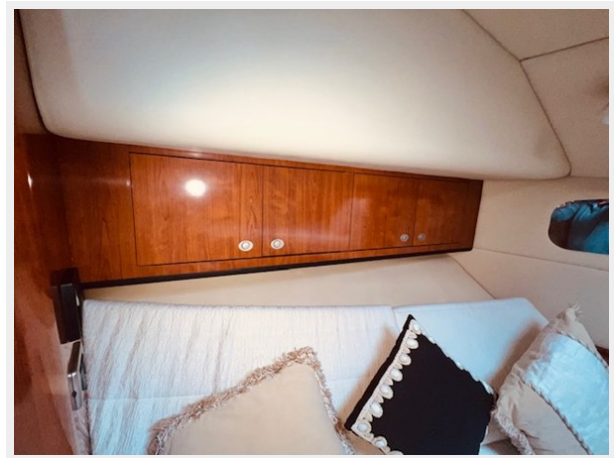
49 Archimedes II 2004 Sea Ray 390 MY FWD Cabin 3 50 Archimedes II 2004 Sea Ray 390 MY FWD Cabin 4



**51 Archimedes II 2004 Sea Ray 390 MY FWD
Cabin 5**



**52 Archimedes II 2004 Sea Ray 390 MY FWD
Cabin 7**



53 Archimedes II 2004 Sea Ray 390 MY FWD Cabin 8 **54 Archimedes II 2004 Sea Ray 390 MY FWD Cabin 9**



55 Archimedes II 2004 Sea Ray 390 MY FWD Cabin 10 56 Archimedes II 2004 Sea Ray 390 MY FWD Cabin 11



57 Archimedes II 2004 Sea Ray 390 MY FWD Cabin 6 58 Archimedes II 2004 Sea Ray 390 MY FWD Cabin 12



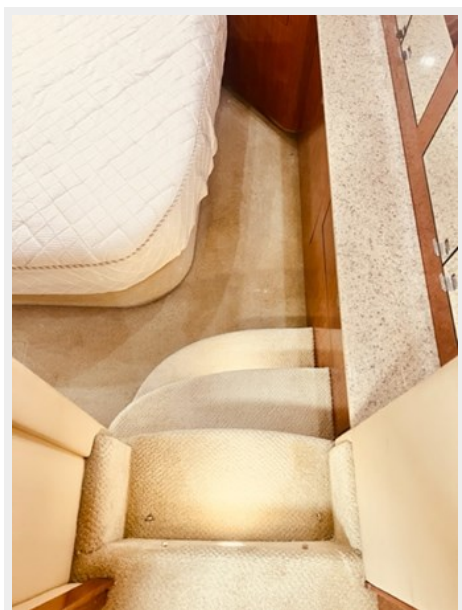
**59 Archimedes II 2004 Sea Ray 390 MY FWD
Head 1**



**60 Archimedes II 2004 Sea Ray 390 MY Aft
cabin 2**



**60.1 Archimedes II 2004 Sea Ray 390 MY Aft
Cabin 1**



**61 Archimedes II 2004 Sea Ray 390 MY Aft
Cabin 4**



62 Archimedes II 2004 Sea Ray 390 MY Aft Cabin 3



63 Archimedes II 2004 Sea Ray 390 MY Aft Cabin 5



64 Archimedes II 2004 Sea Ray 390 MY Aft Cabin 6



65 Archimedes II 2004 Sea Ray 390 MY Aft Cabin 9



**66 Archimedes II 2004 Sea Ray 390 MY Aft
Cabin 10**



**67 Archimedes II 2004 Sea Ray 390 MY Aft
Cabin 10**



**68 Archimedes II 2004 Sea Ray 390 MY Aft
Cabin 12**



**69 Archimedes II 2004 Sea Ray 390 MY Aft
Cabin 13**



**70 Archimedes II 2004 Sea Ray 390 MY Aft
Cabin 14**



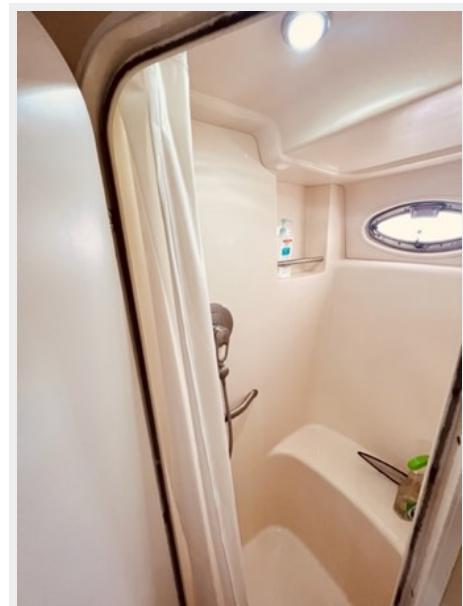
**71 Archimedes II 2004 Sea Ray 390 MY Aft
Head**



**72 Archimedes II 2004 Sea Ray 390 MY Aft
Head Storage**



**73 Archimedes II 2004 Sea Ray 390 MY Aft
shower**



**74 Archimedes II 2004 Sea Ray 390 MY
Engine Room 1**



**75 Archimedes II 2004 Sea Ray 390 MY
Engine room 2**



**76 Archimedes II 2004 Sea Ray 390 MY
Engine Room 3**



**77 Archimedes II 2004 Sea Ray 390 MY
Engine Room 4**



**78 Archimedes II 2004 Sea Ray 390 MY
Engine Room 5**



**79 Archimedes II 2004 Sea Ray 390 MY
Engine room 6**



**80 Archimedes II 2004 Sea Ray 390 MY
Engine Room 7**



**81 Archimedes II 2004 Sea Ray 390 MY
Engine Room 8**



**82 Archimedes II 2004 Sea Ray 390 MY
Engine Room 9**



**83 Archimedes II 2004 Sea Ray 390 MY
Engine Room 10**



**84 Archimedes II 2004 Sea Ray 390 MY
Engine room 11**



**85 Archimedes II 2004 Sea Ray 390 MY
Engine Room 10**



86 Archimedes II 2004 Sea Ray 390 MY engine room 12



87 Archimedes II 2004 Sea Ray 390 MY model plate



88 Archimedes II 2004 Sea Ray 390 MY on the hard 1



89 Archimedes II 2004 Sea Ray 390 MY on the hard 2



90 Archimedes II 2004 Sea Ray 390 MY on the hard 3



91 Archimedes II 2004 Sea Ray 390 MY on the hard 4



91 Archimedes II 2004 Sea Ray 390 MY on the hard 6



92 Archimedes II 2004 Sea Ray 390 MY on the hard 7



93 Archimedes II 2004 Sea Ray 390 MY on the hard 7



94 Archimedes II 2004 Sea Ray 390 MY Dinghy 1



95 Archimedes II 2004 Sea Ray 390 MY Dinghy 2



96 Archimedes II 2004 Sea Ray 390 MY Dinghy 3



97 Archimedes II 2004 Sea Ray 390 MY dinghy motor



КОНТАКТЫ

Андрей Шестаков (Andrey Shestakov) – ведущий яхтенный брокер отдела продаж яхт и судов компании Shestakov Yacht Sales Inc. Официальный представитель Shestakov Yacht Sales Inc. для русскоговорящих клиентов в центральном офисе компании в Майами/Форт Лодердейл/Флорида/США.

Контактная информация

Email: andrey@shestakovyachtsales.com

Web: shestakovyachtsales.com

Телефоны

Краснодарский край: **+7(918)465-66-44**

США, Майами, Флорида: **+1(954)274-4435**

Время работы

Понедельник – Суббота: **9:00 - 21:00**
EDT

Воскресенье: **Закрито**

Адрес



Harbour Towne Marina, 850 NE 3rd St,
STE 213, Dania, FL 33004