

AFAET — JONGERT



Builder: JONGERT

Year Built: 1991

Model: Motorsailor

Price: €1,850,000 EUR

Location: Greece

LOA: 100' (30.47mm)

Beam: 21.98

Max Draft: 10' 6" (3.2mm)

Cruise Speed: 10 Knots Kts. (12 MPH)

Max Speed: 12 Knots Kts. (14 MPH)

Our experienced yacht broker, Andrey Shestakov, will help you choose and buy a yacht that best suits your needs **AFAET — JONGERT** from our catalogue. Presently, at Shestakov Yacht Sales Inc., we have a wide variety of yachts available on our sale's list. We also work in close contact with all the big yacht manufacturers from all over the world.

If you would like to buy a yacht **AFAET — JONGERT** or would like help answering any questions concerning purchasing, selling or chartering a yacht, please call **+1(954)274-4435**

TABLE OF CONTENTS

TABLE OF CONTENTS	2
SPECIFICATIONS	4
Overview	4
Basic Information	4
Dimensions	4
Speed, Capacities and Weight	4
Accommodations	4
Hull and Deck Information	5
Engine Information	5
PHOTOS	6
1689669739900_RESIZE_0027_DJI_0218	6
1689669374121_RESIZE_0004_DSC04328	6
1689669739900_RESIZE_0023_DJI_0265-Enhanced-NR	6
1689669374123_RESIZE_0006_DSC03640	6
1689669374126_RESIZE_0009_DSC03538	6
1689669739901_RESIZE_0031_DJI_0034	6
1689669739899_RESIZE_0022_DJI_0278-Enhanced-NR	7
1689669739901_RESIZE_0037_DJI_0009	7
1689669739896_RESIZE_0018_DJI_0999	7
1689669739901_RESIZE_0028_DJI_0154	7
1643808066202_03	7
1689669374131_RESIZE_0014_DSC02389	7
1689669374133_RESIZE_0016_DSC02368	8
1689669374128_RESIZE_0013_DSC02443	8
1689669374127_RESIZE_0010_DSC02488	8
1689669374131_RESIZE_0015_DSC02380	8
1689669374128_RESIZE_0012_DSC02479	8
1689669374128_RESIZE_0011_DSC02482	8

1689669888488_RESIZE_0000_DSC03971	8
1689669888491_RESIZE_0002_DSC03963	8
1689669888491_RESIZE_0007_DSC01775-HDR	9
1689669888491_RESIZE_0008_DSC01763-HDR	9
1689669936922_RESIZE_0016_DSC01682-HDR	9
1689669936920_RESIZE_0011_DSC01718-HDR	9
1689669974155_RESIZE_0034_DSC01491-Enhanced-NR	9
1689669974154_RESIZE_0024_DSC01580-Enhanced-NR	9
1689669974154_RESIZE_0022_DSC01588-HDR	10
1689669974154_RESIZE_0027_DSC01552-HDR	10
1689669974153_RESIZE_0019_DSC01624-HDR	10
1689669974153_RESIZE_0018_DSC01649-HDR	10
1689669974155_RESIZE_0031_DSC01505-HDR	10
1689669974153_RESIZE_0021_DSC01606-HDR	10
1689669374124_RESIZE_0007_DSC03610	11
CONTACTS	12
Contact details	12
Telephones	12
Office hours	12
Address	12

SPECIFICATIONS

Overview

With a high-quality refit transforming both her interior and exterior in 2019, the 100'(30.47m) Jongert-built sailing yacht AFAET represents an exciting sales opportunity, pairing smooth sailing with the comfort of a spacious interior.

Basic Information

Category: Motorsailor

Model Year: 1991

Year Built: 1991

Country: Greece

Dimensions

LOA: 100' (30.47mm)

Beam: 21.98

Max Draft: 10' 6" (3.2mm)

Speed, Capacities and Weight

Cruise Speed: 10 Knots Kts. (12 MPH)

Cruise Speed Range: 3000

Max Speed: 12 Knots Kts. (14 MPH)

Water Capacity: 3000 Gallons

Fuel Capacity: 2443.59 Gal Gallons

Accommodations

Total Cabins: 4

Sleeps: 9

Crew Cabin: 4

Hull and Deck Information

Hull Material: Steel

Engine Information

Engines: 1

Manufacturer: Scania

Fuel Type: Diesel

PHOTOS

1689669739900_RESIZE_0027_DJI_0218



1689669374121_RESIZE_0004_DSC04328



1689669739900_RESIZE_0023_DJI_0265-
Enhanced-NR



1689669374123_RESIZE_0006_DSC03640



1689669374126_RESIZE_0009_DSC03538



1689669739901_RESIZE_0031_DJI_0034



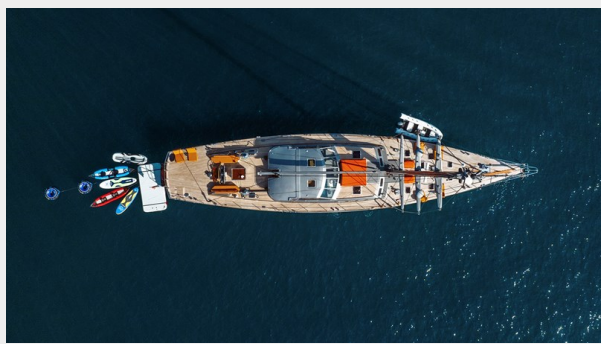
1689669739901_RESIZE_0037_DJI_0009



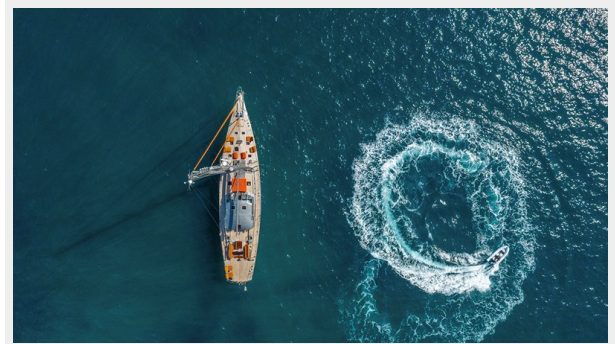
1689669739899_RESIZE_0022_DJI_0278-Enhanced-NR



1689669739896_RESIZE_0018_DJI_0999



1689669739901_RESIZE_0028_DJI_0154



1643808066202_03



1689669374131_RESIZE_0014_DSC02389



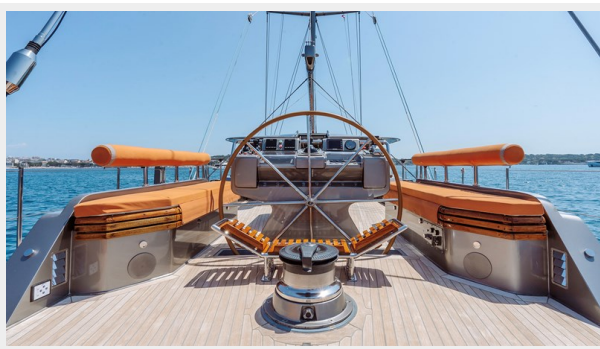
1689669374133_RESIZE_0016_DSC02368



1689669374128_RESIZE_0013_DSC02443



1689669374127_RESIZE_0010_DSC02488



1689669374131_RESIZE_0015_DSC02380



1689669374128_RESIZE_0012_DSC02479



1689669374128_RESIZE_0011_DSC02482



1689669888488_RESIZE_0000_DSC03971



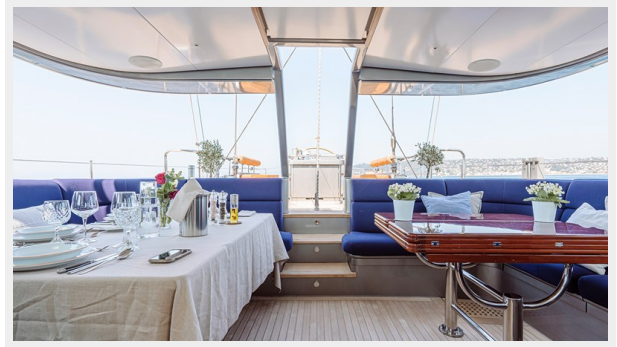
1689669888491_RESIZE_0002_DSC03963



1689669888491_RESIZE_0007_DSC01775-HDR



1689669888491_RESIZE_0008_DSC01763-HDR



1689669936922_RESIZE_0016_DSC01682-HDR



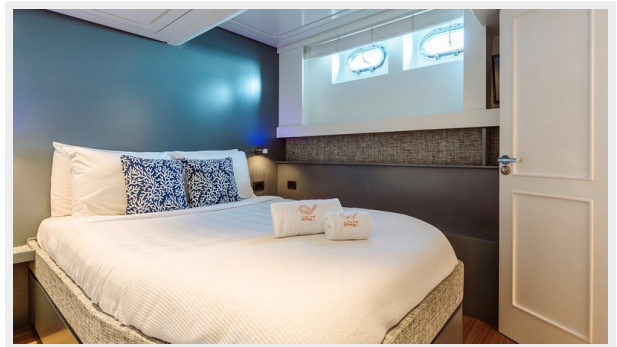
1689669936920_RESIZE_0011_DSC01718-HDR



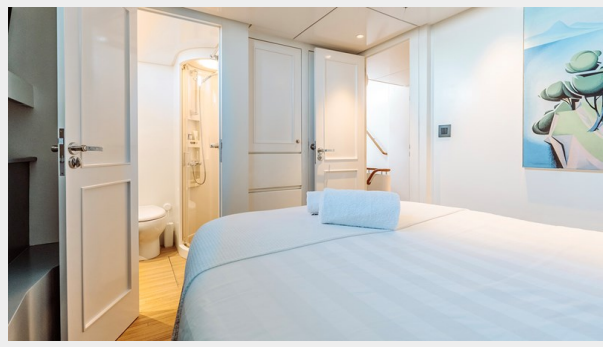
1689669974155_RESIZE_0034_DSC01491-Enhanced-NR



1689669974154_RESIZE_0024_DSC01580-Enhanced-NR



1689669974154_RESIZE_0022_DSC01588-HDR



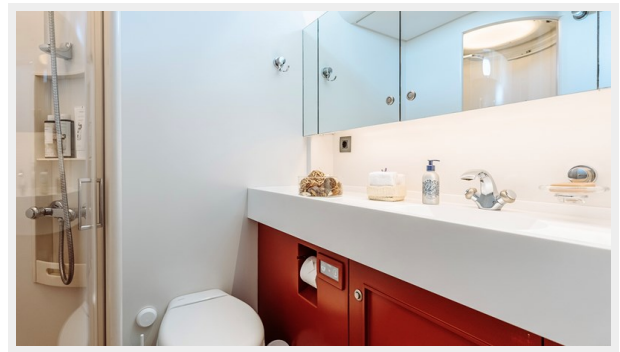
1689669974154_RESIZE_0027_DSC01552-HDR



1689669974153_RESIZE_0019_DSC01624-HDR



1689669974153_RESIZE_0018_DSC01649-HDR



1689669974155_RESIZE_0031_DSC01505-HDR



1689669974153_RESIZE_0021_DSC01606-HDR



1689669374124_RESIZE_0007_DSC03610



CONTACTS

Andrey Shestakov, leading yacht broker of the sales department of Shestakov Yacht Sales Inc. Shestakov Yacht Sales Inc., the official representative of the Miami/Fort Lauderdale FL headquarters.

Contact details

Email: andrey@shestakovyachtsales.com

Web: shestakovyachtsales.com/en/

Telephones

USA: +1(954)274-4435

Office hours

Monday – Saturday: **9:00 - 21:00** EDT

Sunday: **closed**

Address



Harbour Towne Marina, 850 NE 3rd St,
STE 213, Dania, FL 33004