

## SUNSET — SILVERTON



**Builder:** SILVERTON

**Year Built:** 2007

**Model:** Aft Cabin

**Price:** PRICE ON APPLICATION

**Location:** United States

**LOA:** 39' (11.89mm)

**Beam:** 14

**Max Draft:** 3' 11" (1.19mm)

Our experienced yacht broker, Andrey Shestakov, will help you choose and buy a yacht that best suits your needs **Sunset — SILVERTON** from our catalogue. Presently, at Shestakov Yacht Sales Inc., we have a wide variety of yachts available on our sale's list. We also work in close contact with all the big yacht manufacturers from all over the world.

If you would like to buy a yacht **Sunset — SILVERTON** or would like help answering any questions concerning purchasing, selling or chartering a yacht, please call **+1(954)274-4435**

# TABLE OF CONTENTS

TABLE OF CONTENTS	2
SPECIFICATIONS	5
Overview	5
Basic Information	6
Dimensions	6
Speed, Capacities and Weight	6
Accommodations	7
Hull and Deck Information	7
Engine Information	7
PHOTOS	8
8603751_20221130054345707_1_XLARGE	8
8603751_20221130054344945_1_XLARGE	8
8603751_20221130054355308_1_XLARGE	8
8603751_20221130054353138_1_XLARGE	8
8603751_20221208112144428_1_XLARGE	9
8603751_20221208112139716_1_XLARGE	9
8603751_20221208112137818_1_XLARGE	9
8603751_20221208112156325_1_XLARGE	9
8603751_20221208112147412_1_XLARGE	9
8603751_20221208112206528_1_XLARGE	9
8603751_20221208112209167_1_XLARGE	10
8603751_20221208112214531_1_XLARGE	10
8603751_20221208112159068_1_XLARGE	10
8603751_20221208112212050_1_XLARGE	10
8603751_20221208112217598_1_XLARGE	10
8603751_20221208112225505_1_XLARGE	10
8603751_20221208112228929_1_XLARGE	11
8603751_20221208112231941_1_XLARGE	11

---

8603751_20221208112221275_1_XLARGE	11
8603751_20221208112223657_1_XLARGE	11
8603751_20221208112234595_1_XLARGE	11
8603751_20221208112203511_1_XLARGE	11
8603751_20221208112153648_1_XLARGE	12
8603751_20221208112150560_1_XLARGE	12
8603751_20221208112236899_1_XLARGE	12
8603751_20221208112258177_1_XLARGE	12
8603751_20221208112249285_1_XLARGE	12
8603751_20221208112251665_1_XLARGE	12
8603751_20221208112242693_1_XLARGE	13
8603751_20221208112307348_1_XLARGE	13
8603751_20221208112300938_1_XLARGE	13
8603751_20221208112304249_1_XLARGE	13
8603751_20221208112329929_1_XLARGE	13
8603751_20221208112318113_1_XLARGE	13
8603751_20221208112311832_1_XLARGE	14
8603751_20221208112315112_1_XLARGE	14
8603751_20221208112320957_1_XLARGE	14
8603751_20221208112327229_1_XLARGE	14
8603751_20221208112254972_1_XLARGE	14
8603751_20221208112358120_1_XLARGE	14
8603751_20221208112332017_1_XLARGE	15
8603751_20221208112335214_1_XLARGE	15
8603751_20221208112338201_1_XLARGE	15
8603751_20221208112352070_1_XLARGE	15
8603751_20221208112355600_1_XLARGE	15
8603751_20221208112344423_1_XLARGE	15
8603751_20221208112347164_1_XLARGE	16

---

---

8603751_20221208112341120_1_XLARGE	16
8603751_20221208112401952_1_XLARGE	16
8603751_20221208112405383_1_XLARGE	16
8603751_20221208112411790_1_XLARGE	16
8603751_20221208112408157_1_XLARGE	16
8603751_20221208112433344_1_XLARGE	17
8603751_20221208112430720_1_XLARGE	17
8603751_20221208112427289_1_XLARGE	17
8603751_20221208112436240_1_XLARGE	17
8603751_20221208112441697_1_XLARGE	17
8603751_20221208112438631_1_XLARGE	17
8603751_20221208112421749_1_XLARGE	18
8603751_20221208112418156_1_XLARGE	18
8603751_20221208112424139_1_XLARGE	18
CONTACTS	19
Contact details	19
Telephones	19
Office hours	19
Address	19

---

# SPECIFICATIONS

---

## Overview

---

Sunset is a beautiful 2007 Silverton 39 Motor Yacht. She is powered by twin Cummins QSB5.9 380 HP diesel engines with approximately 600 hours on each.

When away from the dock, electrical power is provided by a Kohler 10 KW diesel generator with approximately 220 hours. Shore power is provided with a single 50 AMP Glendinning cable master power cord.

When you first step on to Sunset you will notice the ease of which the aft deck is accessed from the swim platform, with molded in fiberglass stairs and a stainless steel handrail. Once on the aft deck, protection is offered underneath a fiberglass hardtop, you will see a wet bar serviced with a refrigerator. Ample seating is provided with a built in aft bench seat with plenty of room for loose furnishings. A flat screen smart TV completes the space. Should the weather not cooperate you are surrounded by protective canvas that can also be opened to let the sea breeze flow through!

Up 3 steps from the aft deck is the upper helm area. Again, there is abundant room for not only the Captain, but plenty of room for family/guests as this area easily seats 8 adults! Steering is hydraulic and shifting is a breeze with the dual electronic shift controls. Navigation aids include a Garmin 7610xsv chart plotter, Garmin auto pilot and Garmin color radar. Engine instrumentation is supplied via twin SmartCraft Digital Displays. No day on the water is complete without music to enhance the mood! This is provided via a Fusion RA70 stereo system. Finally, this area is also fully enclosed with canvas.

Docking is made simple with the twin diesel engines aided by a bow thruster. Anchoring is also a sinch with the remote anchor windlass control at the helm station as well as foot controls on the bow. The anchor rode consists of 60 feet of chain and 240 feet of nylon rode.

Stepping down into the main salon from the aft deck you will find yourself in a very spacious area that is an open concept to include the galley and dinette area. This area is bright and open with large windows, complete with wooden mini-blinds, and is further accentuated by gloss finished wood paneling and a cream colored head liner. There is also a pull out sofa that makes into a bed for those extra guests. Entertainment is provided via a smart, flat screen TV.

The galley is a bright open space that also allows the chef to be involved in the festivities. Cooking duties are performed on a three burned princess glass cooktop stove while the Samsung smart 5 function oven will deal with any other food prep needs such as micro wave, convection oven, standard oven, etc! There is plenty of room for food and drinks in the full size marine refrigerator. Finally this entire area is heated and cooled with its own, dedicated HVAC system that was new in 2022.

Moving forward from the galley you will find the VIP stateroom. It has a queen size berth, ample storage, an overhead hatch to let in fresh air, private access to the forward head with separate

shower stall. Again this area has its own HVAC system providing heat or cooling based on the then current climate conditions.

Moving to the aft down several steps will take you to the roomy, open aft cabin! You will sleep in comfort on the island queen berth! There is also a large window on the aft bulkhead that opens to provide a fresh breeze, as well as a private head with a separate shower area. There is loads of space to hold all your personal items for extended cruising. This area is also serviced by a dedicated HVAC system.

All accommodations areas are protected with a Simply Safe dedicated CO2 and smoke detector system. The engine/generator/machinery spaces are protected with an automatic fire suppression system.

Machinery/engine access is through a hatch located in the center of the salon area, making daily checks of fluids and maintenance a breeze. The Reverso oil change system also makes regular maintenance that much easier!

This boat is currently located at Riviera Dunes Marina in Palmetto, Florida. The slip she is currently berthed in is also available to rent to the new owner.

Additional photos and video to follow.

---

## Basic Information

---

**Category:** Aft Cabin

**Sub Category:** Aft Cabin

**Model Year:** 2007

**Year Built:** 2007

**Country:** United States

---

## Dimensions

---

**LOA:** 39' (11.89m)

**Beam:** 14

**Max Draft:** 3' 11" (1.19m)

---

## Speed, Capacities and Weight

---

**Water Capacity:** 100 Gallons

**Holding Tank:** 60 Gal Gallons

**Fuel Capacity:** 334 Gal Gallons

---

## Accommodations

---

**Total Cabins:** 2

---

## Hull and Deck Information

---

**Hull Material:** Fiberglass

---

## Engine Information

---

**Engines:** 2

**Manufacturer:** Cummins

**Engine Type:** Inboard

**Fuel Type:** Diesel

# PHOTOS

8603751\_20221130054345707\_1\_XLARGE

8603751\_20221130054344945\_1\_XLARGE



8603751\_20221130054355308\_1\_XLARGE

8603751\_20221130054353138\_1\_XLARGE





8603751\_20221208112144428\_1\_XLARGE



8603751\_20221208112139716\_1\_XLARGE



8603751\_20221208112137818\_1\_XLARGE



8603751\_20221208112156325\_1\_XLARGE



8603751\_20221208112147412\_1\_XLARGE



8603751\_20221208112206528\_1\_XLARGE



8603751\_20221208112209167\_1\_XLARGE



8603751\_20221208112214531\_1\_XLARGE



8603751\_20221208112159068\_1\_XLARGE



8603751\_20221208112212050\_1\_XLARGE



8603751\_20221208112217598\_1\_XLARGE



8603751\_20221208112225505\_1\_XLARGE





8603751\_20221208112228929\_1\_XLARGE



8603751\_20221208112231941\_1\_XLARGE



8603751\_20221208112221275\_1\_XLARGE



8603751\_20221208112223657\_1\_XLARGE



8603751\_20221208112234595\_1\_XLARGE



8603751\_20221208112203511\_1\_XLARGE



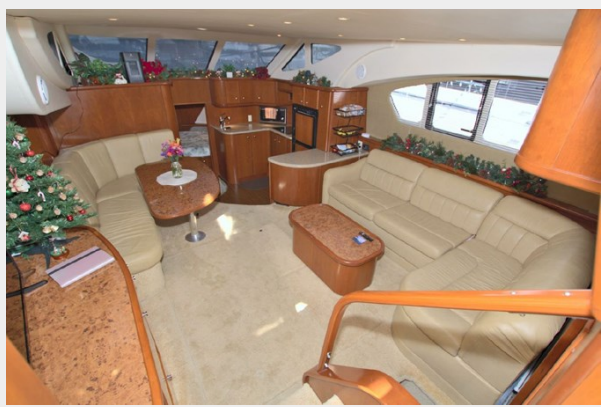
8603751\_20221208112153648\_1\_XLARGE



8603751\_20221208112150560\_1\_XLARGE



8603751\_20221208112236899\_1\_XLARGE



8603751\_20221208112258177\_1\_XLARGE



8603751\_20221208112249285\_1\_XLARGE



8603751\_20221208112251665\_1\_XLARGE





8603751\_20221208112242693\_1\_XLARGE



8603751\_20221208112307348\_1\_XLARGE



8603751\_20221208112300938\_1\_XLARGE



8603751\_20221208112304249\_1\_XLARGE



8603751\_20221208112329929\_1\_XLARGE



8603751\_20221208112318113\_1\_XLARGE



8603751\_20221208112311832\_1\_XLARGE



8603751\_20221208112315112\_1\_XLARGE



8603751\_20221208112320957\_1\_XLARGE



8603751\_20221208112327229\_1\_XLARGE



8603751\_20221208112254972\_1\_XLARGE



8603751\_20221208112358120\_1\_XLARGE





8603751\_20221208112332017\_1\_XLARGE



8603751\_20221208112335214\_1\_XLARGE



8603751\_20221208112338201\_1\_XLARGE



8603751\_20221208112352070\_1\_XLARGE



8603751\_20221208112355600\_1\_XLARGE



8603751\_20221208112344423\_1\_XLARGE





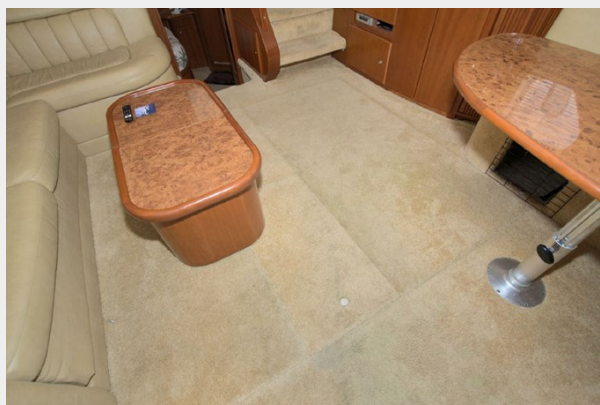
8603751\_20221208112347164\_1\_XLARGE



8603751\_20221208112341120\_1\_XLARGE



8603751\_20221208112401952\_1\_XLARGE



8603751\_20221208112405383\_1\_XLARGE



8603751\_20221208112411790\_1\_XLARGE



8603751\_20221208112408157\_1\_XLARGE





8603751\_20221208112433344\_1\_XLARGE



8603751\_20221208112430720\_1\_XLARGE



8603751\_20221208112427289\_1\_XLARGE



8603751\_20221208112436240\_1\_XLARGE



8603751\_20221208112441697\_1\_XLARGE



8603751\_20221208112438631\_1\_XLARGE



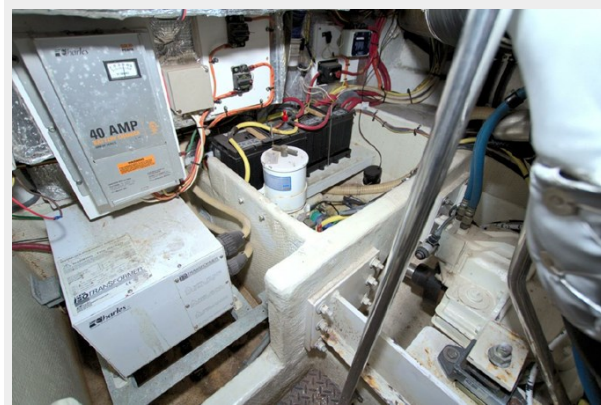
8603751\_20221208112421749\_1\_XLARGE



8603751\_20221208112418156\_1\_XLARGE



8603751\_20221208112424139\_1\_XLARGE



# CONTACTS

---

Andrey Shestakov, leading yacht broker of the sales department of Shestakov Yacht Sales Inc. Shestakov Yacht Sales Inc., the official representative of the Miami/Fort Lauderdale FL headquarters.

## Contact details

---

Email: [andrey@shestakovyachtsales.com](mailto:andrey@shestakovyachtsales.com)

Web: [shestakovyachtsales.com/en/](http://shestakovyachtsales.com/en/)

## Telephones

---

USA: +1(954)274-4435

## Office hours

---

Monday – Saturday: **9:00 - 21:00** EDT

Sunday: **closed**

## Address

---



Harbour Towne Marina, 850 NE 3rd St,  
STE 213, Dania, FL 33004