

# LADY MARISA — MONTE CARLO YACHTS



**Builder:** MONTE CARLO YACHTS

**Year Built:** 2017

**Model:** Motor Yacht

**Price:** PRICE ON APPLICATION

**Location:** Italy

**LOA:** 105' 8" (32.2mm)

**Beam:** 25.45

**Max Draft:** 6' 7" (2mm)

**Cruise Speed:** 10.8 Knots Kts. (12 MPH)

**Max Speed:** 13.5 Knots Kts. (16 MPH)

Our experienced yacht broker, Andrey Shestakov, will help you choose and buy a yacht that best suits your needs **Lady Marisa — MONTE CARLO YACHTS** from our catalogue. Presently, at Shestakov Yacht Sales Inc., we have a wide variety of yachts available on our sale's list. We also work in close contact with all the big yacht manufacturers from all over the world.

If you would like to buy a yacht **Lady Marisa — MONTE CARLO YACHTS** or would like help answering any questions concerning purchasing, selling or chartering a yacht, please call **+1(954)274-4435**

# TABLE OF CONTENTS

---

TABLE OF CONTENTS	2
SPECIFICATIONS	4
Overview	4
Basic Information	4
Dimensions	4
Speed, Capacities and Weight	4
Accommodations	4
Hull and Deck Information	4
Engine Information	5
PHOTOS	6
Lady Marisa (25)	6
Lady Marisa	6
Lady Marisa (29)	6
Lady Marisa (30)	6
ext area	6
Lady Marisa (24)	6
Lady Marisa (23)	7
Lady Marisa (31)	7
Lady Marisa (19)	7
Lady Marisa (26)	7
Lady Marisa (27)	7
Lady Marisa (28)	7
main saloon	7
Lady Marisa (32)	7
Wheelhouse	8
Lady Marisa (20)	8
Lady Marisa (21)	8
Lady Marisa (22)	8

---

Lady Marisa (33)	8
Lady Marisa (34)	8
master cabin 2	8
master cabin 3	8
Twin cabin 2	9
master cabin	9
Vip Cabin 2	9
Twin cabin	9
Vip Cabin	9
Galley 1	9
Engine Room	9
CONTACTS	10
Contact details	10
Telephones	10
Office hours	10
Address	10

---

# SPECIFICATIONS

---

## Overview

---

Amazing deal!

## Basic Information

---

**Category:** Motor Yacht

**Model Year:** 2017

**Year Built:** 2017

**Country:** Italy

## Dimensions

---

**LOA:** 105' 8" (32.2mm)

**Beam:** 25.45

**Max Draft:** 6' 7" (2mm)

## Speed, Capacities and Weight

---

**Cruise Speed:** 10.8 Knots Kts. (12 MPH)

**Max Speed:** 13.5 Knots Kts. (16 MPH)

**Water Capacity:** 2000 Gallons

**Fuel Capacity:** 3170.06 Gal Gallons

## Accommodations

---

**Total Cabins:** 5

**Total Heads:** 6

## Hull and Deck Information

---

**Hull Material:** Fiberglass

---

## Engine Information

---

**Engines:** 2

**Manufacturer:** MTU

**Engine Type:** Inboard

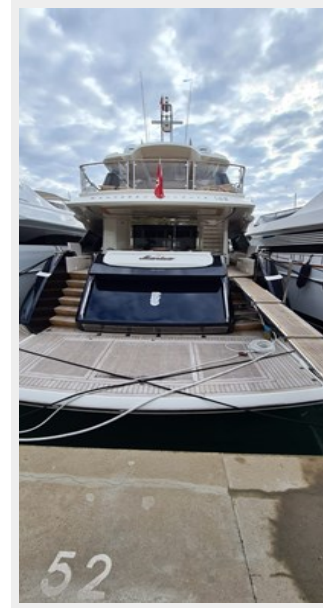
**Fuel Type:** Diesel

# PHOTOS

**Lady Marisa**



**Lady Marisa (25)**



**Lady Marisa (29)**



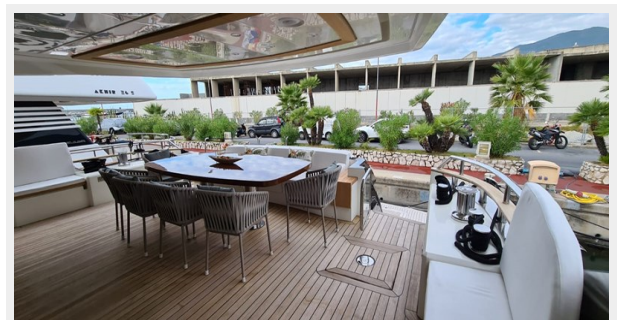
**Lady Marisa (30)**



**ext area**



**Lady Marisa (24)**



**Lady Marisa (23)**



**Lady Marisa (31)**



**Lady Marisa (19)**



**Lady Marisa (26)**



**Lady Marisa (27)**



**Lady Marisa (28)**



**Lady Marisa (32)**



**main saloon**



**Wheelhouse**



**Lady Marisa (20)**



**Lady Marisa (21)**



**Lady Marisa (22)**



**Lady Marisa (33)**



**Lady Marisa (34)**



**master cabin 2**



**master cabin 3**





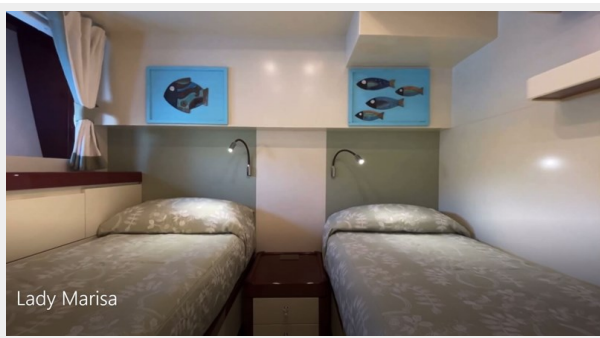
**master cabin**



**Twin cabin 2**



**Twin cabin**



**Vip Cabin 2**



**Vip Cabin**



**Galley 1**



**Engine Room**



# CONTACTS

---

Andrey Shestakov, leading yacht broker of the sales department of Shestakov Yacht Sales Inc. Shestakov Yacht Sales Inc., the official representative of the Miami/Fort Lauderdale FL headquarters.

## Contact details

---

Email: [andrey@shestakovyachtsales.com](mailto:andrey@shestakovyachtsales.com)

Web: [shestakovyachtsales.com/en/](http://shestakovyachtsales.com/en/)

## Telephones

---

USA: +1(954)274-4435

## Office hours

---

Monday – Saturday: **9:00 - 21:00** EDT

Sunday: **closed**

## Address

---



Harbour Towne Marina, 850 NE 3rd St,  
STE 213, Dania, FL 33004