

SINGULARITY — BENETEAU



Builder: BENETEAU

LOA: 50' (15.24mm)

Year Built: 2018

Model: Motor Yacht

Price: PRICE ON APPLICATION

Location: United States

Our experienced yacht broker, Andrey Shestakov, will help you choose and buy a yacht that best suits your needs **Singularity — BENETEAU** from our catalogue. Presently, at Shestakov Yacht Sales Inc., we have a wide variety of yachts available on our sale's list. We also work in close contact with all the big yacht manufacturers from all over the world.

If you would like to buy a yacht **Singularity — BENETEAU** or would like help answering any questions concerning purchasing, selling or chartering a yacht, please call **+1(954)274-4435**

TABLE OF CONTENTS

| | |
|------------------------------------|----|
| TABLE OF CONTENTS | 2 |
| SPECIFICATIONS | 5 |
| Overview | 5 |
| Basic Information | 6 |
| Dimensions | 6 |
| Accommodations | 6 |
| Hull and Deck Information | 6 |
| Engine Information | 6 |
| PHOTOS | 7 |
| Screen Shot 2022-11-29 at 12.41.39 | 7 |
| Screen Shot 2022-11-29 at 12.41.47 | 7 |
| Screen Shot 2022-11-29 at 12.41.57 | 7 |
| Screen Shot 2022-11-29 at 12.42.05 | 7 |
| Screen Shot 2022-11-29 at 12.42.11 | 8 |
| Screen Shot 2022-11-29 at 12.42.20 | 8 |
| Screen Shot 2022-11-29 at 12.42.28 | 8 |
| Screen Shot 2022-11-29 at 12.42.35 | 8 |
| Screen Shot 2022-11-29 at 12.42.41 | 9 |
| Screen Shot 2022-11-29 at 12.42.48 | 9 |
| Screen Shot 2022-11-29 at 12.42.54 | 9 |
| Screen Shot 2022-11-29 at 12.43.01 | 9 |
| Screen Shot 2022-11-29 at 12.43.08 | 9 |
| Screen Shot 2022-11-29 at 12.43.15 | 9 |
| Screen Shot 2022-11-29 at 12.43.23 | 10 |
| Screen Shot 2022-11-29 at 12.43.29 | 10 |
| Screen Shot 2022-11-29 at 12.43.46 | 10 |
| Screen Shot 2022-11-29 at 12.43.36 | 10 |
| Screen Shot 2022-11-29 at 12.43.54 | 10 |

| | |
|------------------------------------|----|
| Screen Shot 2022-11-29 at 12.44.01 | 10 |
| Screen Shot 2022-11-29 at 12.44.11 | 11 |
| Screen Shot 2022-11-29 at 12.44.21 | 11 |
| Screen Shot 2022-11-29 at 12.44.30 | 11 |
| Screen Shot 2022-11-29 at 12.44.38 | 11 |
| Screen Shot 2022-11-29 at 12.44.53 | 12 |
| Screen Shot 2022-11-29 at 12.44.45 | 12 |
| Screen Shot 2022-11-29 at 12.45.03 | 12 |
| Screen Shot 2022-11-29 at 12.45.10 | 12 |
| Screen Shot 2022-11-29 at 12.45.18 | 12 |
| Screen Shot 2022-11-29 at 12.45.28 | 12 |
| Screen Shot 2022-11-29 at 12.45.39 | 13 |
| Screen Shot 2022-11-29 at 12.45.48 | 13 |
| Screen Shot 2022-11-29 at 12.46.03 | 13 |
| Screen Shot 2022-11-29 at 12.46.14 | 13 |
| Screen Shot 2022-11-29 at 12.46.35 | 13 |
| Screen Shot 2022-11-29 at 12.46.26 | 13 |
| Screen Shot 2022-11-29 at 12.46.49 | 14 |
| Screen Shot 2022-11-29 at 12.46.42 | 14 |
| Screen Shot 2022-11-29 at 12.47.00 | 14 |
| Screen Shot 2022-11-29 at 12.47.08 | 14 |
| Screen Shot 2022-11-29 at 12.47.19 | 15 |
| Screen Shot 2022-11-29 at 12.48.45 | 15 |
| Screen Shot 2022-11-29 at 12.48.58 | 15 |
| Screen Shot 2022-11-29 at 12.49.08 | 15 |
| Screen Shot 2022-11-29 at 12.49.30 | 15 |
| Screen Shot 2022-11-29 at 12.49.18 | 15 |
| Screen Shot 2022-11-29 at 12.49.50 | 16 |
| Screen Shot 2022-11-29 at 12.49.42 | 16 |

| | |
|------------------------------------|-----------|
| Screen Shot 2022-11-29 at 12.50.00 | 16 |
| Screen Shot 2022-11-29 at 12.50.18 | 16 |
| Screen Shot 2022-11-29 at 12.50.36 | 17 |
| Screen Shot 2022-11-29 at 12.50.26 | 17 |
| Screen Shot 2022-11-29 at 12.50.42 | 17 |
| Screen Shot 2022-11-29 at 12.50.49 | 17 |
| Screen Shot 2022-11-29 at 12.50.57 | 18 |
| Screen Shot 2022-11-29 at 12.51.05 | 18 |
| Screen Shot 2022-11-29 at 12.51.13 | 18 |
| Screen Shot 2022-11-29 at 12.51.24 | 18 |
| Screen Shot 2022-11-29 at 12.51.32 | 19 |
| Screen Shot 2022-11-29 at 12.51.42 | 19 |
| Screen Shot 2022-11-29 at 12.51.58 | 19 |
| Screen Shot 2022-11-29 at 12.51.52 | 19 |
| Screen Shot 2022-11-29 at 12.52.07 | 20 |
| Screen Shot 2022-11-29 at 12.52.15 | 20 |
| Screen Shot 2022-11-29 at 12.52.22 | 20 |
| Screen Shot 2022-11-29 at 12.52.28 | 20 |
| Screen Shot 2022-11-29 at 12.52.38 | 20 |
| Screen Shot 2022-11-29 at 12.52.53 | 20 |
| CONTACTS | 21 |
| Contact details | 21 |
| Telephones | 21 |
| Office hours | 21 |
| Address | 21 |

SPECIFICATIONS

Overview

"**Singularity**" is a very nice example of the popular Beneteau Monte Carlo 5, lovingly cared for and upgraded by her only owners. Upgrades include SeaDeck outdoor flooring on the sidedeck, foredeck and flybridge, a full flybridge enclosure, and added diesel heating on the fly. Regular servicing on the engines, IPS drives, and generator.

Her hull, designed for Volvo's IPS drives, features a wave-piercing bow which improves her navigation in the roughest seas. She is CE Certified Category B ("boats operating offshore with winds to 40 knots and significant seas to 13 feet"), so despite her beautiful looks, she is perfectly capable of extended cruising adventures in the Pacific Northwest or down the coast.

Her design is by the Italian superyacht design firm Nuvolari & Lenard, which shows in her striking profile and bow. She turns heads wherever she goes. The combination of the deep blue hull, cream gelcoat and black accents adds to the effect of a luxury yacht in a manageable 50-footer, all operated with pod drives and joysticks for ease of docking and maneuvering.

Features include:

- Volvo IPS Pod Drives - with **3 Joystick Docking and Maneuvering stations**
- 3 Cabins, 2 Heads configuration
- Air Conditioning and Heating
- Integrated BBQ Grill on swim platform
- Drop-down swim platform can hold a full-size tender
- Washer/dryer combo
- Custom Blue hull paint, with cream gelcoat.

Owner Upgrades:

- Full Flybridge enclosure with strata glass and sliding side panels, by Canvas Supply, with wipers for forward panel.
- Flybridge roof lighting system
- Flybridge diesel heater (Webasto)
- Custom SeaDek on sidedecks, foredeck, and flybridge
- Sirius Weather Module on Chartplotters
- Extended VHF Antenna
- Cell Phone Signal Extender (Shakespeare)
- AIS Send/Receive
- Upgraded chartplotter on flybridge to SIMRAD NSS12 Evo3

- Added Portable Flybridge VHF
- Upgraded to 55lb Rocna anchor; kept the original 55 lb Delta as spare
- Liferaft
- Added wall outlets and USB receptacles across the vessel

Available to see by appointment at our office on Lake Union (Short-term moorage available).

Basic Information

Category: Motor Yacht

Model Year: 2018

Year Built: 2018

Country: United States

Dimensions

LOA: 50' (15.24mm)

Accommodations

Total Cabins: 3

Hull and Deck Information

Hull Material: Fiberglass

Engine Information

Engines: 2

Manufacturer: Volvo

Engine Type: Inboard

Fuel Type: Diesel

PHOTOS

Screen Shot 2022-11-29 at 12.41.39



Screen Shot 2022-11-29 at 12.41.47



Screen Shot 2022-11-29 at 12.41.57



Screen Shot 2022-11-29 at 12.42.05



Screen Shot 2022-11-29 at 12.42.11



Screen Shot 2022-11-29 at 12.42.20



Screen Shot 2022-11-29 at 12.42.28



Screen Shot 2022-11-29 at 12.42.35



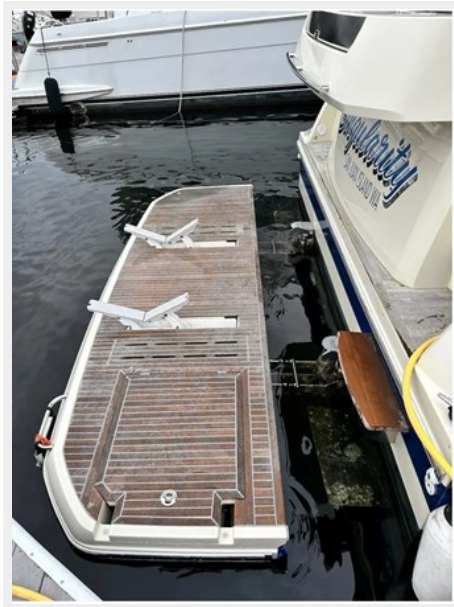
Screen Shot 2022-11-29 at 12.42.41



Screen Shot 2022-11-29 at 12.42.48



Screen Shot 2022-11-29 at 12.42.54



Screen Shot 2022-11-29 at 12.43.01



Screen Shot 2022-11-29 at 12.43.08



Screen Shot 2022-11-29 at 12.43.15



Screen Shot 2022-11-29 at 12.43.23



Screen Shot 2022-11-29 at 12.43.29



Screen Shot 2022-11-29 at 12.43.36



Screen Shot 2022-11-29 at 12.43.46



Screen Shot 2022-11-29 at 12.43.54



Screen Shot 2022-11-29 at 12.44.01



Screen Shot 2022-11-29 at 12.44.11



Screen Shot 2022-11-29 at 12.44.21



Screen Shot 2022-11-29 at 12.44.30



Screen Shot 2022-11-29 at 12.44.38



Screen Shot 2022-11-29 at 12.44.53



Screen Shot 2022-11-29 at 12.44.45



Screen Shot 2022-11-29 at 12.45.03



Screen Shot 2022-11-29 at 12.45.10



Screen Shot 2022-11-29 at 12.45.18



Screen Shot 2022-11-29 at 12.45.28



Screen Shot 2022-11-29 at 12.45.39



Screen Shot 2022-11-29 at 12.45.48



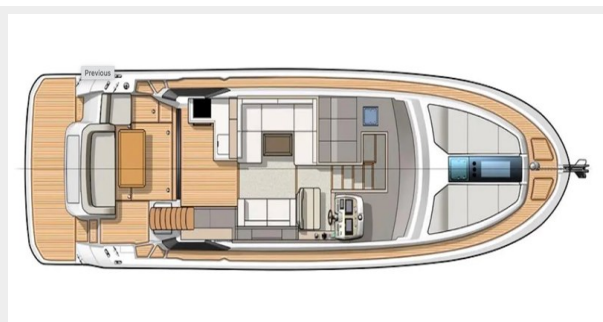
Screen Shot 2022-11-29 at 12.46.03



Screen Shot 2022-11-29 at 12.46.14



Screen Shot 2022-11-29 at 12.46.26



Screen Shot 2022-11-29 at 12.46.35



Screen Shot 2022-11-29 at 12.46.49



Screen Shot 2022-11-29 at 12.46.42



Screen Shot 2022-11-29 at 12.47.08



Screen Shot 2022-11-29 at 12.47.00



Screen Shot 2022-11-29 at 12.47.19



Screen Shot 2022-11-29 at 12.48.45



Screen Shot 2022-11-29 at 12.48.58



Screen Shot 2022-11-29 at 12.49.08



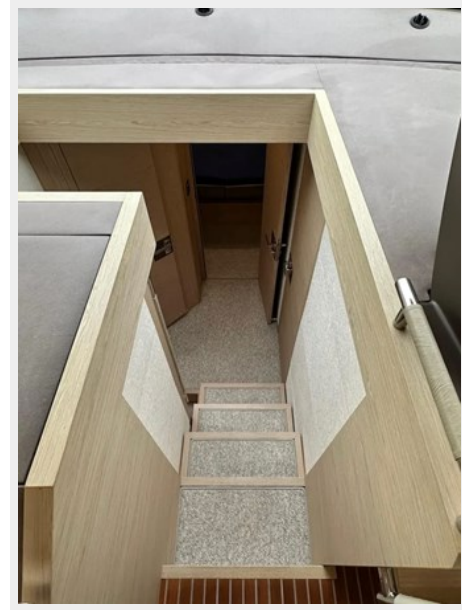
Screen Shot 2022-11-29 at 12.49.18



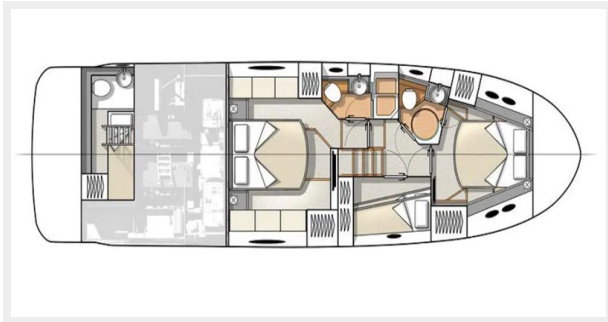
Screen Shot 2022-11-29 at 12.49.30



Screen Shot 2022-11-29 at 12.49.50



Screen Shot 2022-11-29 at 12.49.42



Screen Shot 2022-11-29 at 12.50.00



Screen Shot 2022-11-29 at 12.50.18



Screen Shot 2022-11-29 at 12.50.26



Screen Shot 2022-11-29 at 12.50.36



Screen Shot 2022-11-29 at 12.50.42



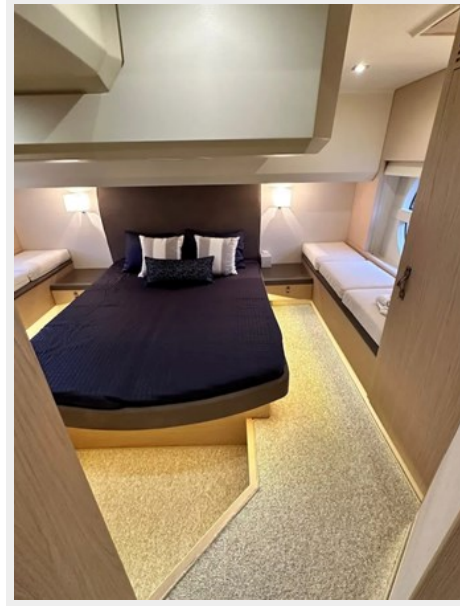
Screen Shot 2022-11-29 at 12.50.49



Screen Shot 2022-11-29 at 12.50.57



Screen Shot 2022-11-29 at 12.51.05



Screen Shot 2022-11-29 at 12.51.13



Screen Shot 2022-11-29 at 12.51.24



Screen Shot 2022-11-29 at 12.51.32



Screen Shot 2022-11-29 at 12.51.42

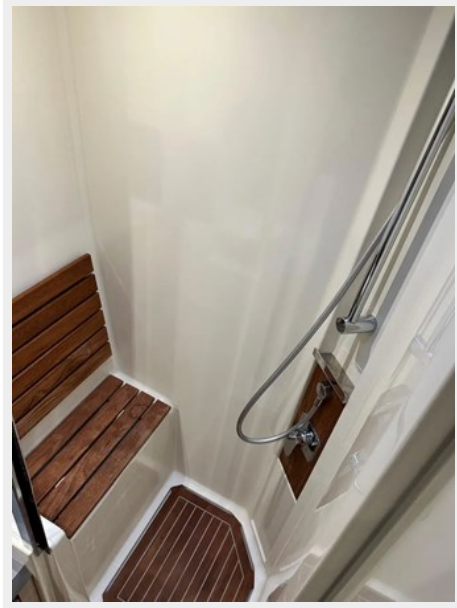


Screen Shot 2022-11-29 at 12.51.58

Screen Shot 2022-11-29 at 12.51.52



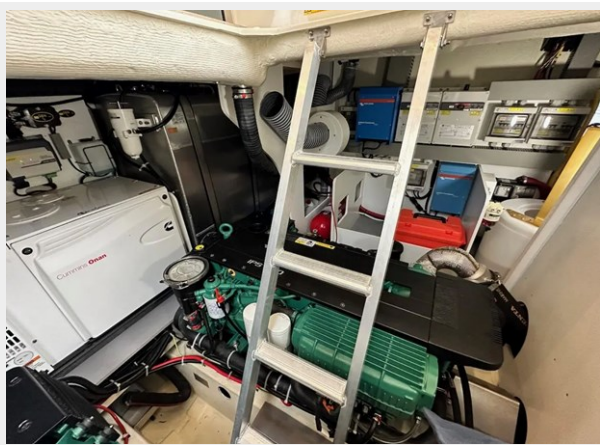
Screen Shot 2022-11-29 at 12.52.07



Screen Shot 2022-11-29 at 12.52.15



Screen Shot 2022-11-29 at 12.52.22



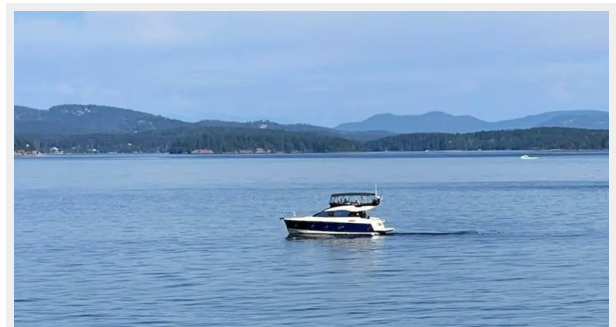
Screen Shot 2022-11-29 at 12.52.28



Screen Shot 2022-11-29 at 12.52.38



Screen Shot 2022-11-29 at 12.52.53



CONTACTS

Andrey Shestakov, leading yacht broker of the sales department of Shestakov Yacht Sales Inc. Shestakov Yacht Sales Inc., the official representative of the Miami/Fort Lauderdale FL headquarters.

Contact details

Email: andrey@shestakovyachtsales.com

Web: shestakovyachtsales.com/en/

Telephones

USA: +1(954)274-4435

Office hours

Monday – Saturday: **9:00 - 21:00** EDT

Sunday: **closed**

Address



Harbour Towne Marina, 850 NE 3rd St,
STE 213, Dania, FL 33004