

SP110-03 — SANLORENZO



Builder: SANLORENZO

Year Built: 2024

Model: Motor Yacht

Price: €13,500,000 EUR

Location: Italy

LOA: 108' 5" (33.04mm)

Beam: 26.9

Max Draft: 4' 4" (1.3mm)

Cruise Speed: 36 Knots Kts. (41 MPH)

Max Speed: 40 Knots Kts. (46 MPH)

Our experienced yacht broker, Andrey Shestakov, will help you choose and buy a yacht that best suits your needs **SP110-03 — SANLORENZO** from our catalogue. Presently, at Shestakov Yacht Sales Inc., we have a wide variety of yachts available on our sale's list. We also work in close contact with all the big yacht manufacturers from all over the world.

If you would like to buy a yacht **SP110-03 — SANLORENZO** or would like help answering any questions concerning purchasing, selling or chartering a yacht, please call **+1(954)274-4435**

TABLE OF CONTENTS

TABLE OF CONTENTS	2
SPECIFICATIONS	4
Overview	4
Basic Information	4
Dimensions	4
Speed, Capacities and Weight	5
Accommodations	5
Hull and Deck Information	5
Engine Information	5
PHOTOS	6
01 - Sanlorenzo SP110_Page_59_Image_0001 (GWG Edit) grey	6
Book SP_110_03_00 LD_Page_05_Image_0001	6
Book SP_110_03_00 LD_Page_02_Image_0001	6
Book SP_110_03_00 LD_Page_03_Image_0001	6
Book SP_110_03_00 LD_Page_18_Image_0001	6
Book SP_110_03_00 LD_Page_19_Image_0001	6
Book SP_110_03_00 LD_Page_20_Image_0001	7
Book SP_110_03_00 LD_Page_08_Image_0001	7
Book SP_110_03_00 LD_Page_06_Image_0001	7
Book SP_110_03_00 LD_Page_09_Image_0001	7
Book SP_110_03_00 LD_Page_13_Image_0001	7
Book SP_110_03_00 LD_Page_10_Image_0001	7
Book SP_110_03_00 LD_Page_12_Image_0001	8
Book SP_110_03_00 LD_Page_14_Image_0001	8
Book SP_110_03_00 LD_Page_17_Image_0001	8
Book SP_110_03_00 LD_Page_15_Image_0001	8
Book SP_110_03_00 LD_Page_16_Image_0001	9
01 - Sanlorenzo SP110_Page_17_Image_0001 (GWG Edit)	9

01 - Sanlorenzo SP110_Page_16_Image_0001 (GWG Edit) grey	9
01 - Sanlorenzo SP110_Page_12_Image_0001 (grey)	9
01 - Sanlorenzo SP110_Page_07_Image_0001 (grey)	9
01 - Sanlorenzo SP110_Page_08_Image_0001 (grey)	9
CONTACTS	10
Contact details	10
Telephones	10
Office hours	10
Address	10

SPECIFICATIONS

Overview

The brand-new 33m high-performance coupé Sanlorenzo SP110-03 has been launched in March 2024. The yacht features exterior design by Bernardo Zuccon while her cool, minimalist interior décor and styling with a theme of lightness throughout was curated by Piero Lissoni. The SP110-03's hull designed by Marco Arnaboldi was optimized for use with water-jet propulsion providing efficient cruising. Solar panels and a system of lithium batteries complement this sustainable approach. Inside, the yacht is deceptively large with a split-level main salon, with large windows creating stunning vistas throughout. This area can be fully opened thanks to sliding doors, connecting to the vast aft deck, and creating a sleek indoor-outdoor vibe. The SP110-03 yacht can accommodate eight guests across four cabins including an Owner's cabin, a guest cabin with twin beds that can be converted into a lounge, and two VIP cabins. All cabins can be found on the lower deck. The open aft deck is a versatile space, which can be populated with module furniture for socialising, or used to stow water toys or a tender when underway. Steps from the aft deck lead down to the swim platform. The SP110-03 comes with full warranty and a comprehensive list of options. Owners looking to get on the water next summer on a brand-new yacht won't want to miss this.

Key features: • Comprehensive list of options • Brand new yacht will full warranty • Lissoni edition • Split-level salon • Seakeeper zero speed Gyro • Project managed by Owner's team

Basic Information

Category: Motor Yacht

Model Year: 2024

Year Built: 2024

Country: Italy

Dimensions

LOA: 108' 5" (33.04mm)

Beam: 26.9

Max Draft: 4' 4" (1.3mm)

Speed, Capacities and Weight

Cruise Speed: 36 Knots Kts. (41 MPH)

Max Speed: 40 Knots Kts. (46 MPH)

Gross Tonnage: 229 Pounds

Water Capacity: 1500 Gallons

Fuel Capacity: 3170.06 Gal Gallons

Accommodations

Total Cabins: 4

Hull and Deck Information

Hull Material: Composite

Exterior Designer: Zuccon International
Project

Interior Designer: Sanlorenzo / Piero
Lissoni

Engine Information

Engines: 3

Manufacturer: MAN

PHOTOS

01 - Sanlorenzo
SP110_Page_59_Image_0001 (GWG Edit)
grey



Book SP_110_03_00
LD_Page_05_Image_0001



Book SP_110_03_00
LD_Page_02_Image_0001



Book SP_110_03_00
LD_Page_03_Image_0001



Book SP_110_03_00
LD_Page_18_Image_0001



Book SP_110_03_00
LD_Page_19_Image_0001



Book SP_110_03_00
LD_Page_20_Image_0001



Book SP_110_03_00
LD_Page_08_Image_0001



Book SP_110_03_00
LD_Page_06_Image_0001



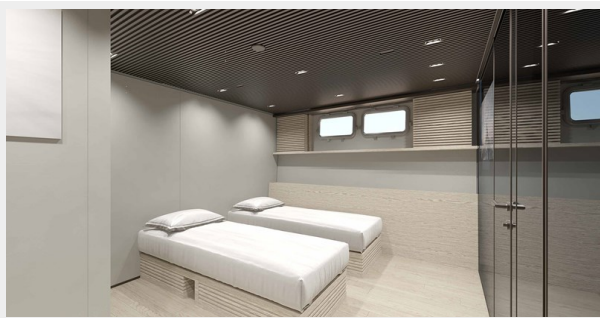
Book SP_110_03_00
LD_Page_09_Image_0001



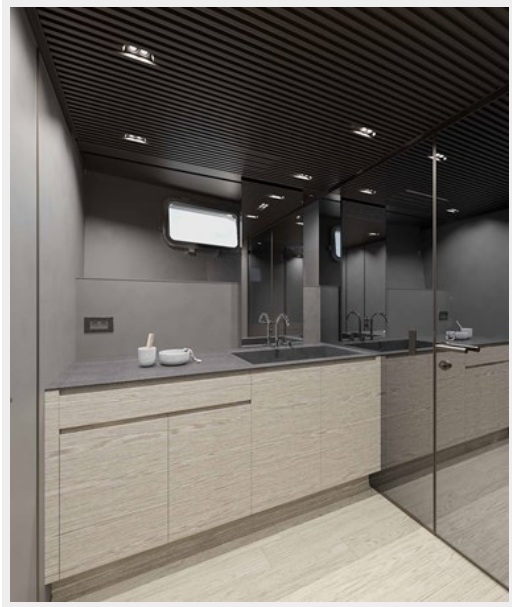
Book SP_110_03_00
LD_Page_13_Image_0001



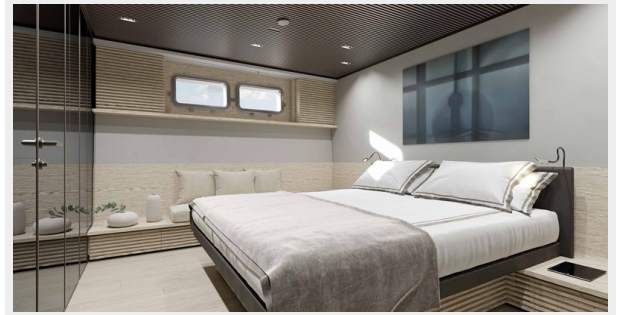
Book SP_110_03_00
LD_Page_10_Image_0001



Book SP_110_03_00
LD_Page_12_Image_0001



Book SP_110_03_00
LD_Page_14_Image_0001



Book SP_110_03_00
LD_Page_17_Image_0001

Book SP_110_03_00
LD_Page_15_Image_0001



Book SP_110_03_00
LD_Page_16_Image_0001



01 - Sanlorenzo
SP110_Page_17_Image_0001 (GWG Edit)



01 - Sanlorenzo
SP110_Page_16_Image_0001 (GWG Edit)
grey



01 - Sanlorenzo
SP110_Page_12_Image_0001 (grey)



01 - Sanlorenzo
SP110_Page_07_Image_0001 (grey)



01 - Sanlorenzo
SP110_Page_08_Image_0001 (grey)



CONTACTS

Andrey Shestakov, leading yacht broker of the sales department of Shestakov Yacht Sales Inc. Shestakov Yacht Sales Inc., the official representative of the Miami/Fort Lauderdale FL headquarters.

Contact details

Email: andrey@shestakovyachtsales.com

Web: shestakovyachtsales.com/en/

Telephones

USA: +1(954)274-4435

Office hours

Monday – Saturday: **9:00 - 21:00** EDT

Sunday: **closed**

Address



Harbour Towne Marina, 850 NE 3rd St,
STE 213, Dania, FL 33004