

KEY GULL — CAROLINA CLASSIC



Builder: CAROLINA CLASSIC

Year Built: 2006

Model: Sport Fisherman

Price: \$54,500 USD

Location: United States

LOA: 25' (7.62mm)

Beam: 8.5

Max Draft: 2' 6" (0.76mm)

Our experienced yacht broker, Andrey Shestakov, will help you choose and buy a yacht that best suits your needs **Key Gull — CAROLINA CLASSIC** from our catalogue. Presently, at Shestakov Yacht Sales Inc., we have a wide variety of yachts available on our sale's list. We also work in close contact with all the big yacht manufacturers from all over the world.

If you would like to buy a yacht **Key Gull — CAROLINA CLASSIC** or would like help answering any questions concerning purchasing, selling or chartering a yacht, please call **+1(954)274-4435**

TABLE OF CONTENTS

TABLE OF CONTENTS	2
SPECIFICATIONS	4
Overview	4
Basic Information	4
Dimensions	4
Speed, Capacities and Weight	4
Accommodations	4
Hull and Deck Information	4
Engine Information	4
PHOTOS	5
1_2791079_25_carolina_classic_port_forward_profile	5
0_2791079_25_carolina_classic_underway	5
2_2791079_25_carolina_classic_starboard_forward_profile	5
3_2791079_25_carolina_classic_starboard_profile	5
4_2791079_25_carolina_classic_starboard_aft_profile	5
5_2791079_25_carolina_classic_cover	5
6_2791079_25_carolina_classic_anchor_windlass	5
7_2791079_25_carolina_classic_foredeck	5
8_2791079_25_carolina_classic_foredeck_aft	6
9_2791079_25_carolina_classic_cockpit_forward	6
10_2791079_25_carolina_classic_cockpit_aft	6
11_2791079_25_carolina_classic_transom	6
13_2791079_25_carolina_classic_helm_port	6
12_2791079_25_carolina_classic_helm_forward	6
14_2791079_25_carolina_classic_helm_starboard	6
15_2791079_25_carolina_classic_helm	6
16_2791079_25_carolina_classic_helm_multi_function_display	7
17_2791079_25_carolina_classic_helmseats	7

18_2791079_25_carolina_classic_helm_port_aft_benchseatstorage	7
19_2791079_25_carolina_classic_stateroom1	7
20_2791079_25_carolina_classic_stateroom2	7
21_2791079_25_carolina_classic_stateroom_aft	7
22_2791079_25_carolina_classic_head	7
23_2791079_25_carolina_classic_stereo	7
24_2791079_25_carolina_classic_engine_compartment	8
25_2791079_25_carolina_classic_main_engine1	8
27_2791079_25_carolina_classic_separ_fuel_filter	8
26_2791079_25_carolina_classic_main_engine2	8
28_2791079_25_carolina_classic_electrical_panel	8
29_2791079_25_carolina_classic_battery_charger	8
30_2791079_25_carolina_classic_engine_compartment_fire_suppression_system	8
31_2791079_25_carolina_classic_running_gear1	8
32_2791079_25_carolina_classic_running_gear2	9
33_2791079_25_carolina_classic_bowthruster	9
CONTACTS	10
Contact details	10
Telephones	10
Office hours	10
Address	10

SPECIFICATIONS

Overview

Key Gull is a 2006 25' Carolina Classic in very nice condition. She offers a single Volvo 260 HP main engine, which was just rebuilt with 0 hours, Side-Power bowthruster, shaft line cutter, SeDek cockpit deck covering (2018), Lewmar anchor windlass, new batteries in 2022, V-berth with insert, swing-out head and a full storage cover. Key Gull is stored on the hard, but she is accessible for inspection. She is easily launched for a survey and trial run. Located in Marathon, Florida.

Basic Information

Category: Sport Fisherman

Model Year: 2006

Year Built: 2006

Country: United States

Dimensions

LOA: 25' (7.62mm)

Beam: 8.5

Max Draft: 2' 6" (0.76mm)

Speed, Capacities and Weight

Water Capacity: 23 Gallons

Fuel Capacity: 165 Gal Gallons

Accommodations

Total Heads: 1

Hull and Deck Information

Hull Material: Fiberglass

Engine Information

Engines: 1

Manufacturer: Volvo

Engine Type: Inboard

Fuel Type: Diesel

PHOTOS

0_2791079_25_carolina_classic_underway



1_2791079_25_carolina_classic_port_forward_profile



2_2791079_25_carolina_classic_starboard_forward_profile



3_2791079_25_carolina_classic_starboard_profile



4_2791079_25_carolina_classic_starboard_aft_profile



5_2791079_25_carolina_classic_cover



6_2791079_25_carolina_classic_anchor_windlass



7_2791079_25_carolina_classic_foredeck



8_2791079_25_carolina_classic_foredeck_aft



9_2791079_25_carolina_classic_cockpit_forward



10_2791079_25_carolina_classic_cockpit_aft



11_2791079_25_carolina_classic_transom



12_2791079_25_carolina_classic_helm_forward



13_2791079_25_carolina_classic_helm_port



14_2791079_25_carolina_classic_helm_starboard



15_2791079_25_carolina_classic_helm



16_2791079_25_carolina_classic_helm_multi_function_display



17_2791079_25_carolina_classic_helmseats



18_2791079_25_carolina_classic_helm_port_aft_benchseatstorage



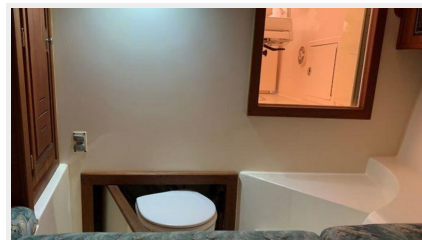
19_2791079_25_carolina_classic_stateroom1



20_2791079_25_carolina_classic_stateroom2



21_2791079_25_carolina_classic_stateroom_aft



22_2791079_25_carolina_classic_head



23_2791079_25_carolina_classic_stereo



24_2791079_25_carolina_classic_engine_compartment



25_2791079_25_carolina_classic_main_engine1



27_2791079_25_carolina_classic_separ_fuel_filter



26_2791079_25_carolina_classic_main_engine2



28_2791079_25_carolina_classic_electrical_panel



29_2791079_25_carolina_classic_battery_charger



30_2791079_25_carolina_classic_engine_compartment_fire_suppression_system



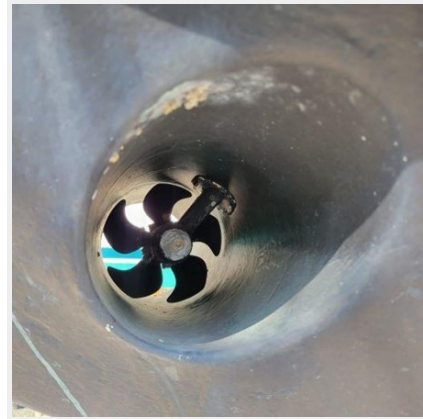
31_2791079_25_carolina_classic_running_gear1



32_2791079_25_carolina_classic_running_gear2



33_2791079_25_carolina_classic_bowthruster



CONTACTS

Andrey Shestakov, leading yacht broker of the sales department of Shestakov Yacht Sales Inc. Shestakov Yacht Sales Inc., the official representative of the Miami/Fort Lauderdale FL headquarters.

Contact details

Email:
andrey@shestakovyachtsales.com

Web: shestakovyachtsales.com/en/

Telephones

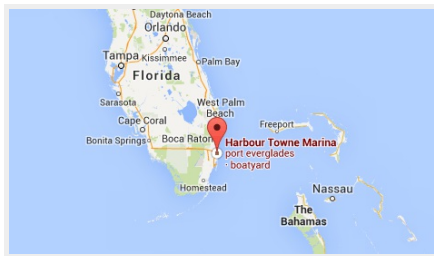
USA: +1(954)274-4435

Office hours

Monday – Saturday: 9:00 - 21:00 EDT

Sunday: **closed**

Address



Harbour Towne Marina, 850 NE 3rd St,
STE 213, Dania, FL 33004