

## JUST DIVINE — TOLLYCRAFT



**Builder:** TOLLYCRAFT

**Year Built:** 1986

**Model:** Pilothouse

**Price:** \$499,000 USD

**Location:** United States

**LOA:** 61' (18.59mm)

**Beam:** 17.5

**Max Draft:** 4' (1.22mm)

Our experienced yacht broker, Andrey Shestakov, will help you choose and buy a yacht that best suits your needs **JUST DIVINE — TOLLYCRAFT** from our catalogue. Presently, at Shestakov Yacht Sales Inc., we have a wide variety of yachts available on our sale's list. We also work in close contact with all the big yacht manufacturers from all over the world.

If you would like to buy a yacht **JUST DIVINE — TOLLYCRAFT** or would like help answering any questions concerning purchasing, selling or chartering a yacht, please call **+1(954)274-4435**

# TABLE OF CONTENTS

---

TABLE OF CONTENTS	2
SPECIFICATIONS	5
Overview	5
Basic Information	5
Dimensions	5
Accommodations	5
Hull and Deck Information	5
Engine Information	5
PHOTOS	6
61_tollycraft_just_divine_aft_deck1	6
61_tollycraft_just_divine_aft_deck2	6
61_tollycraft_just_divine_aft_deck3	6
61_tollycraft_just_divine_aft_deck6	6
61_tollycraft_just_divine_aft_deck8	6
61_tollycraft_just_divine_aft_deck14	6
61_tollycraft_just_divine_engine_room2	7
61_tollycraft_just_divine_engine_room4	7
61_tollycraft_just_divine_engine_room5	7
61_tollycraft_just_divine_engine_room6	7
61_tollycraft_just_divine_engine_room7	7
61_tollycraft_just_divine_engine_room12	7
61_tollycraft_just_divine_flybridge1	8
61_tollycraft_just_divine_flybridge2	8
61_tollycraft_just_divine_flybridge3	8
61_tollycraft_just_divine_flybridge6	8
61_tollycraft_just_divine_flybridge8	8
61_tollycraft_just_divine_flybridge10	8
61_tollycraft_just_divine_flybridge11	9

61_tollycraft_just_divine_flybridge12	9
61_tollycraft_just_divine_flybridge15	9
61_tollycraft_just_divine_flybridge19	9
61_tollycraft_just_divine_forward_head1	9
61_tollycraft_just_divine_forward_head2	9
61_tollycraft_just_divine_forward_head3	10
61_tollycraft_just_divine_forward_stateroom5	10
61_tollycraft_just_divine_forward_stateroom6	10
61_tollycraft_just_divine_forward_stateroom14	10
61_tollycraft_just_divine_forward_stateroom17	11
61_tollycraft_just_divine_galley1	11
61_tollycraft_just_divine_galley2	11
61_tollycraft_just_divine_galley3	11
61_tollycraft_just_divine_galley4	12
61_tollycraft_just_divine_galley7	12
61_tollycraft_just_divine_guest_stateroom1	12
61_tollycraft_just_divine_guest_stateroom6	12
61_tollycraft_just_divine_laundry1	13
61_tollycraft_just_divine_master_head1	13
61_tollycraft_just_divine_master_stateroom1	13
61_tollycraft_just_divine_master_stateroom6	13
61_tollycraft_just_divine_pilothouse1	13
61_tollycraft_just_divine_pilothouse3	13
61_tollycraft_just_divine_pilothouse11	14
61_tollycraft_just_divine_pilothouse4	14
61_tollycraft_just_divine_salon1	14
61_tollycraft_just_divine_salon5	14
tully_craft_just_diving_aerials_7	14
tully_craft_just_diving_aerials_9	14

---

tully_craft_just_diving_aerials_11	15
tully_craft_just_diving_aerials_15	15
tully_craft_just_diving_profiles_5	15
tully_craft_just_diving_profiles_1	15
tully_craft_just_diving_profiles_7	15
tully_craft_just_diving_profiles_9	15
tully_craft_just_diving_profiles_16	16
<b>CONTACTS</b>	<b>17</b>
Contact details	17
Telephones	17
Office hours	17
Address	17

---

# SPECIFICATIONS

---

## Overview

---

A classic Ed Monk design featuring a rich teak interior, full walk around decks, three staterooms with a VIP layout including a full beam master, a large pilothouse, and all of the character and charm which has enabled this design to endure. Often imitated, but never really improved upon, this is a proper three stateroom pilothouse motoryacht, designed to be owner operated with very comfortable guest accommodations.

## Basic Information

---

**Category:** Pilothouse

**Sub Category:** Pilothouse

**Model Year:** 1986

**Year Built:** 1986

**Country:** United States

## Dimensions

---

**LOA:** 61' (18.59mm)

**Beam:** 17.5

**Max Draft:** 4' (1.22mm)

## Accommodations

---

**Total Cabins:** 3

**Total Heads:** 2

## Hull and Deck Information

---

**Hull Material:** Fiberglass

## Engine Information

---

**Engines:** 2

**Manufacturer:** Detroit Diesel

**Engine Type:** Inboard

**Fuel Type:** Diesel

# PHOTOS

61\_tollycraft\_just\_divine\_aft\_deck1



61\_tollycraft\_just\_divine\_aft\_deck2



61\_tollycraft\_just\_divine\_aft\_deck3



61\_tollycraft\_just\_divine\_aft\_deck6



61\_tollycraft\_just\_divine\_aft\_deck8



61\_tollycraft\_just\_divine\_aft\_deck14



61\_tollycraft\_just\_divine\_engine\_room2



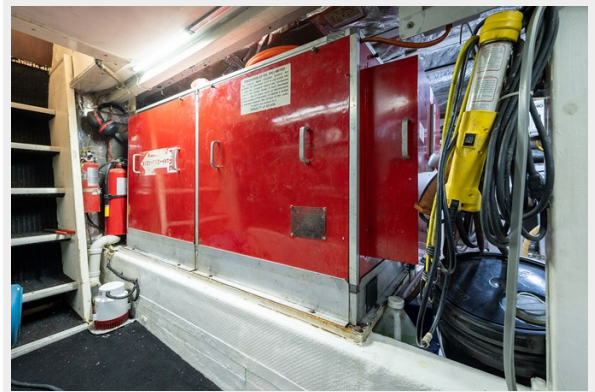
61\_tollycraft\_just\_divine\_engine\_room4



61\_tollycraft\_just\_divine\_engine\_room5



61\_tollycraft\_just\_divine\_engine\_room6



61\_tollycraft\_just\_divine\_engine\_room7



61\_tollycraft\_just\_divine\_engine\_room12



61\_tollycraft\_just\_divine\_flybridge1



61\_tollycraft\_just\_divine\_flybridge2



61\_tollycraft\_just\_divine\_flybridge3



61\_tollycraft\_just\_divine\_flybridge6



61\_tollycraft\_just\_divine\_flybridge8



61\_tollycraft\_just\_divine\_flybridge10





61\_tollycraft\_just\_divine\_flybridge11



61\_tollycraft\_just\_divine\_flybridge12



61\_tollycraft\_just\_divine\_flybridge15



61\_tollycraft\_just\_divine\_flybridge19



61\_tollycraft\_just\_divine\_forward\_head1



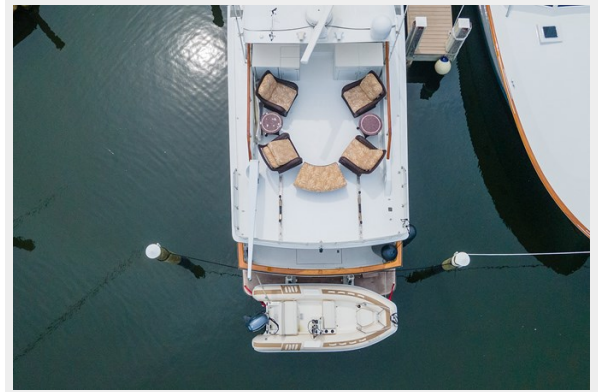
61\_tollycraft\_just\_divine\_forward\_head2



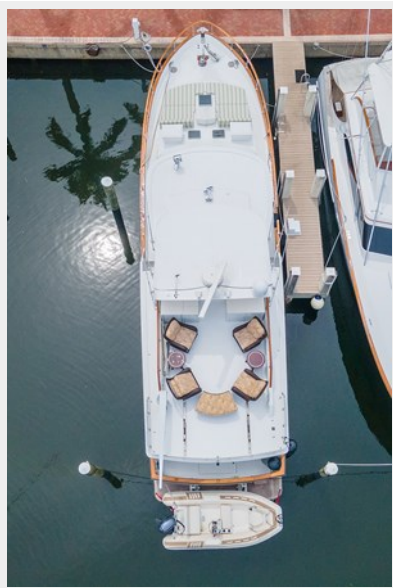
61\_tollycraft\_just\_divine\_forward\_head3



61\_tollycraft\_just\_divine\_forward\_stateroom5



61\_tollycraft\_just\_divine\_forward\_stateroom6



61\_tollycraft\_just\_divine\_forward\_stateroom14



61\_tollycraft\_just\_divine\_forward\_stateroom17



61\_tollycraft\_just\_divine\_galley1



61\_tollycraft\_just\_divine\_galley2



61\_tollycraft\_just\_divine\_galley3



61\_tollycraft\_just\_divine\_galley4



61\_tollycraft\_just\_divine\_galley7



61\_tollycraft\_just\_divine\_guest\_stateroom1



61\_tollycraft\_just\_divine\_guest\_stateroom6



61\_tollycraft\_just\_divine\_laundry1



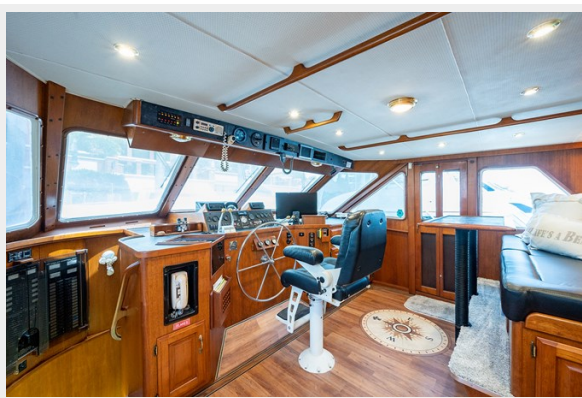
61\_tollycraft\_just\_divine\_master\_head1



61\_tollycraft\_just\_divine\_master\_stateroom1 61\_tollycraft\_just\_divine\_master\_stateroom6



61\_tollycraft\_just\_divine\_pilothouse1



61\_tollycraft\_just\_divine\_pilothouse3



61\_tollycraft\_just\_divine\_pilothouse11

61\_tollycraft\_just\_divine\_pilothouse4



61\_tollycraft\_just\_divine\_salon1



61\_tollycraft\_just\_divine\_salon5



tully\_craft\_just\_diving\_aerials\_7



tully\_craft\_just\_diving\_aerials\_9



tully\_craft\_just\_diving\_aerials\_11



tully\_craft\_just\_diving\_aerials\_15



tully\_craft\_just\_diving\_profiles\_1



tully\_craft\_just\_diving\_profiles\_5



tully\_craft\_just\_diving\_profiles\_7



tully\_craft\_just\_diving\_profiles\_9



tully\_craft\_just\_diving\_profiles\_16





# CONTACTS

---

Andrey Shestakov, leading yacht broker of the sales department of Shestakov Yacht Sales Inc. Shestakov Yacht Sales Inc., the official representative of the Miami/Fort Lauderdale FL headquarters.

## Contact details

---

Email: [andrey@shestakovyachtsales.com](mailto:andrey@shestakovyachtsales.com)

Web: [shestakovyachtsales.com/en/](http://shestakovyachtsales.com/en/)

## Telephones

---

USA: +1(954)274-4435

## Office hours

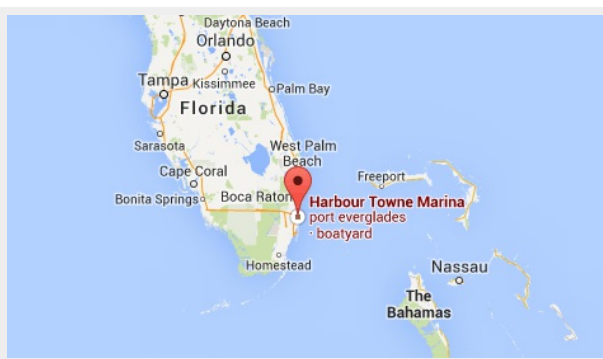
---

Monday – Saturday: 9:00 - 21:00 EDT

Sunday: **closed**

## Address

---



Harbour Towne Marina, 850 NE 3rd St,  
STE 213, Dania, FL 33004