

## JUST DIVINE — TOLLYCRAFT



**Судостроитель:** TOLLYCRAFT

**Год постройки:** 1986

**Модель:** Pilothouse

**Цена:** \$499,000 USD

**Местонахождение:** United States

**Длина общая:** 61' (18.59m)

**Ширина:** 17.5

**Макс. осадка:** 4' (1.22m)

Купить **JUST DIVINE — TOLLYCRAFT** а также выбрать подходящую вам яхту из нашего каталога яхт вам поможет опытный яхтенный брокер Андрей Шестаков. На сегодняшний день компания **Shestakov Yacht Sales Inc.** имеет большое количество яхт в собственном списке продаж, а также тесно сотрудничает со всеми крупными яхтенными производителями по всему миру.

Для того чтобы купить яхту **JUST DIVINE — TOLLYCRAFT** а также проконсультироваться по любому вопросу связанному с покупкой, продажей, чартером яхт позвоните по телефону **+7(918)465-66-44**.

# ОГЛАВЛЕНИЕ

ОГЛАВЛЕНИЕ	2
ХАРАКТЕРИСТИКИ	5
Обзор	5
Основная информация	5
Размеры	5
Размещение	5
Корпус и палуба	5
Информация о двигателе	5
ФОТОГРАФИИ	6
61_tollycraft_just_divine_aft_deck1	6
61_tollycraft_just_divine_aft_deck2	6
61_tollycraft_just_divine_aft_deck3	6
61_tollycraft_just_divine_aft_deck6	6
61_tollycraft_just_divine_aft_deck8	6
61_tollycraft_just_divine_aft_deck14	6
61_tollycraft_just_divine_engine_room2	7
61_tollycraft_just_divine_engine_room4	7
61_tollycraft_just_divine_engine_room5	7
61_tollycraft_just_divine_engine_room6	7
61_tollycraft_just_divine_engine_room7	7
61_tollycraft_just_divine_engine_room12	7
61_tollycraft_just_divine_flybridge1	8
61_tollycraft_just_divine_flybridge2	8
61_tollycraft_just_divine_flybridge3	8
61_tollycraft_just_divine_flybridge6	8
61_tollycraft_just_divine_flybridge8	8
61_tollycraft_just_divine_flybridge10	8
61_tollycraft_just_divine_flybridge11	9

61_tollycraft_just_divine_flybridge12	9
61_tollycraft_just_divine_flybridge15	9
61_tollycraft_just_divine_flybridge19	9
61_tollycraft_just_divine_forward_head1	9
61_tollycraft_just_divine_forward_head2	9
61_tollycraft_just_divine_forward_head3	10
61_tollycraft_just_divine_forward_stateroom5	10
61_tollycraft_just_divine_forward_stateroom6	10
61_tollycraft_just_divine_forward_stateroom14	10
61_tollycraft_just_divine_forward_stateroom17	11
61_tollycraft_just_divine_galley1	11
61_tollycraft_just_divine_galley2	11
61_tollycraft_just_divine_galley3	11
61_tollycraft_just_divine_galley4	12
61_tollycraft_just_divine_galley7	12
61_tollycraft_just_divine_guest_stateroom1	12
61_tollycraft_just_divine_guest_stateroom6	12
61_tollycraft_just_divine_laundry1	13
61_tollycraft_just_divine_master_head1	13
61_tollycraft_just_divine_master_stateroom1	13
61_tollycraft_just_divine_master_stateroom6	13
61_tollycraft_just_divine_pilothouse1	13
61_tollycraft_just_divine_pilothouse3	13
61_tollycraft_just_divine_pilothouse11	14
61_tollycraft_just_divine_pilothouse4	14
61_tollycraft_just_divine_salon1	14
61_tollycraft_just_divine_salon5	14
tully_craft_just_diving_aerials_7	14
tully_craft_just_diving_aerials_9	14

---

tully_craft_just_diving_aerials_11	15
tully_craft_just_diving_aerials_15	15
tully_craft_just_diving_profiles_5	15
tully_craft_just_diving_profiles_1	15
tully_craft_just_diving_profiles_7	15
tully_craft_just_diving_profiles_9	15
tully_craft_just_diving_profiles_16	16
<b>КОНТАКТЫ</b>	<b>17</b>
Контактная информация	17
Телефоны	17
Время работы	17
Адрес	17

# ХАРАКТЕРИСТИКИ

## Обзор

A classic Ed Monk design featuring a rich teak interior, full walk around decks, three staterooms with a VIP layout including a full beam master, a large pilothouse, and all of the character and charm which has enabled this design to endure. Often imitated, but never really improved upon, this is a proper three stateroom pilothouse motoryacht, designed to be owner operated with very comfortable guest accommodations.

## Основная информация

Тип судна: Pilothouse

Подкатегория: Pilothouse

Модельный год: 1986

Год постройки: 1986

Страна: United States

## Размеры

Длина общая: 61' (18.59mm)

Ширина: 17.5

Макс. осадка: 4' (1.22mm)

## Размещение

Всего кают: 3

Всего ком. состава: 2

## Корпус и палуба

Материал корпуса: Fiberglass

## Информация о двигателе

Двигатели: 2

Производитель: Detroit Diesel

Тип двигателя: Inboard

Тип топлива: Diesel

# ФОТОГРАФИИ

61\_tollycraft\_just\_divine\_aft\_deck1



61\_tollycraft\_just\_divine\_aft\_deck2



61\_tollycraft\_just\_divine\_aft\_deck3



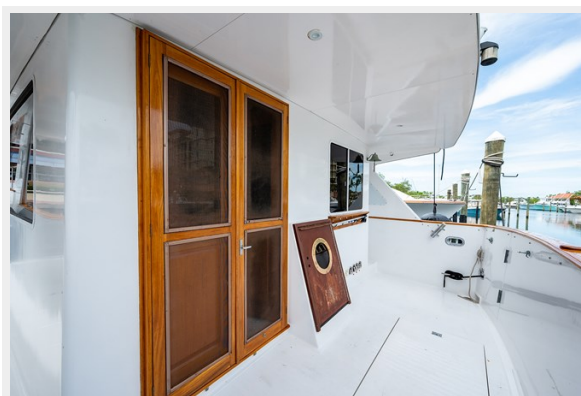
61\_tollycraft\_just\_divine\_aft\_deck6



61\_tollycraft\_just\_divine\_aft\_deck8



61\_tollycraft\_just\_divine\_aft\_deck14



61\_tollycraft\_just\_divine\_engine\_room2



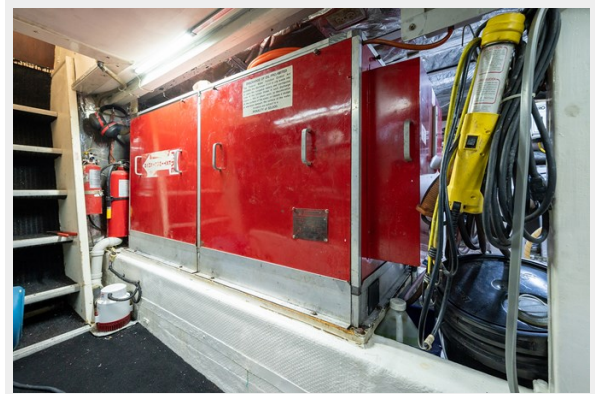
61\_tollycraft\_just\_divine\_engine\_room4



61\_tollycraft\_just\_divine\_engine\_room5



61\_tollycraft\_just\_divine\_engine\_room6



61\_tollycraft\_just\_divine\_engine\_room7



61\_tollycraft\_just\_divine\_engine\_room12



61\_tollycraft\_just\_divine\_flybridge1



61\_tollycraft\_just\_divine\_flybridge2



61\_tollycraft\_just\_divine\_flybridge3



61\_tollycraft\_just\_divine\_flybridge6



61\_tollycraft\_just\_divine\_flybridge8



61\_tollycraft\_just\_divine\_flybridge10





61\_tollycraft\_just\_divine\_flybridge11



61\_tollycraft\_just\_divine\_flybridge12



61\_tollycraft\_just\_divine\_flybridge15



61\_tollycraft\_just\_divine\_flybridge19



61\_tollycraft\_just\_divine\_forward\_head1



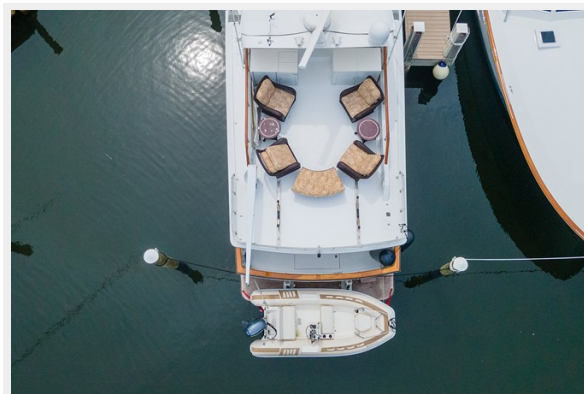
61\_tollycraft\_just\_divine\_forward\_head2



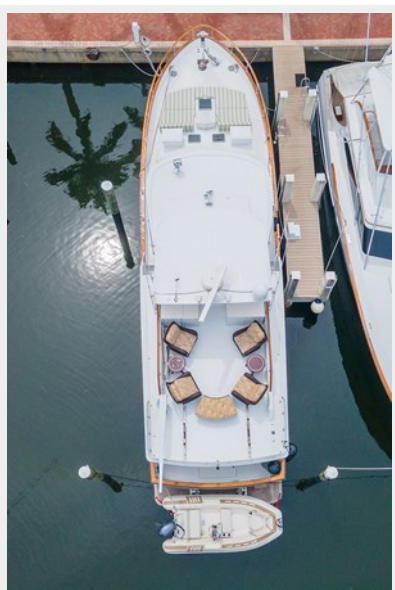
61\_tollycraft\_just\_divine\_forward\_head3



61\_tollycraft\_just\_divine\_forward\_stateroom5



61\_tollycraft\_just\_divine\_forward\_stateroom6



61\_tollycraft\_just\_divine\_forward\_stateroom14



61\_tollycraft\_just\_divine\_forward\_stateroom17



61\_tollycraft\_just\_divine\_galley1



61\_tollycraft\_just\_divine\_galley2



61\_tollycraft\_just\_divine\_galley3



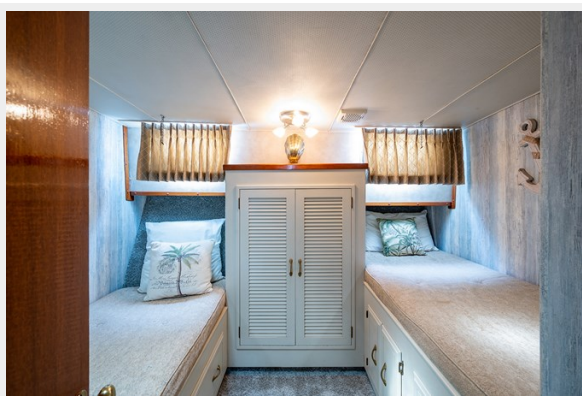
61\_tollycraft\_just\_divine\_galley4



61\_tollycraft\_just\_divine\_galley7



61\_tollycraft\_just\_divine\_guest\_stateroom1



61\_tollycraft\_just\_divine\_guest\_stateroom6



61\_tollycraft\_just\_divine\_laundry1



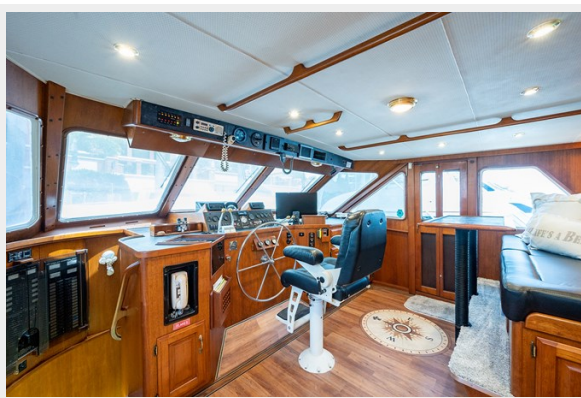
61\_tollycraft\_just\_divine\_master\_head1



61\_tollycraft\_just\_divine\_master\_stateroom1 61\_tollycraft\_just\_divine\_master\_stateroom6



61\_tollycraft\_just\_divine\_pilothouse1



61\_tollycraft\_just\_divine\_pilothouse3



61\_tollycraft\_just\_divine\_pilothouse11

61\_tollycraft\_just\_divine\_pilothouse4



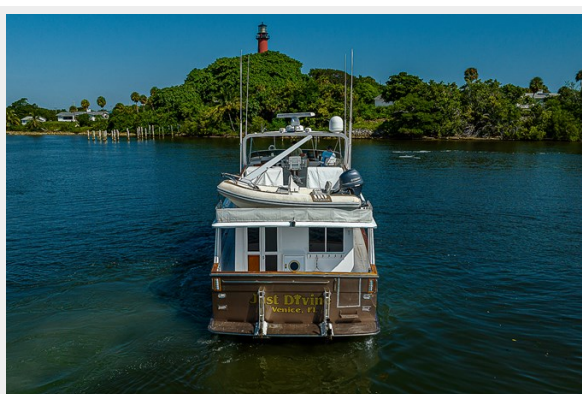
61\_tollycraft\_just\_divine\_salon1



61\_tollycraft\_just\_divine\_salon5



tully\_craft\_just\_diving\_aerials\_7



tully\_craft\_just\_diving\_aerials\_9



tully\_craft\_just\_diving\_aerials\_11



tully\_craft\_just\_diving\_aerials\_15



tully\_craft\_just\_diving\_profiles\_1



tully\_craft\_just\_diving\_profiles\_5



tully\_craft\_just\_diving\_profiles\_7



tully\_craft\_just\_diving\_profiles\_9



tully\_craft\_just\_diving\_profiles\_16





# КОНТАКТЫ

---

Андрей Шестаков (Andrey Shestakov) – ведущий яхтенный брокер отдела продаж яхт и судов компании Shestakov Yacht Sales Inc. Официальный представитель Shestakov Yacht Sales Inc. для русскоговорящих клиентов в центральном офисе компании в Майами/Форт Лодердейл/Флорида/США.

## Контактная информация

---

Email: [andrey@shestakovyachtsales.com](mailto:andrey@shestakovyachtsales.com)

Web: [shestakovyachtsales.com](http://shestakovyachtsales.com)

## Телефоны

---

Краснодарский край: **+7(918)465-66-44**

США, Майами, Флорида: **+1(954)274-4435**

## Время работы

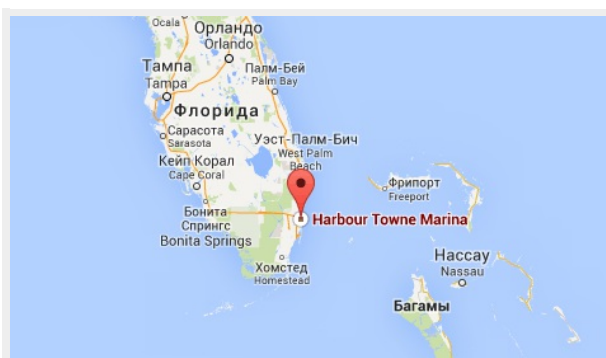
---

Понедельник – Суббота: **9:00 - 21:00**  
EDT

Воскресенье: **Закрито**

## Адрес

---



Harbour Towne Marina, 850 NE 3rd St,  
STE 213, Dania, FL 33004