

COPIHUE — WILLIAMS MARINE



Builder: WILLIAMS MARINE

Year Built: 1989

Model: Cruising Ketch

Price: PRICE ON APPLICATION

Location: France

LOA: 60' 5" (18.4mm)

Beam: 14.76

Min Draft: 7' 11" (2.4mm)

Cruise Speed: 7 Knots Kts. (8 MPH)

Max Speed: 9 Knots Kts. (10 MPH)

Our experienced yacht broker, Andrey Shestakov, will help you choose and buy a yacht that best suits your needs **COPIHUE — WILLIAMS MARINE** from our catalogue. Presently, at Shestakov Yacht Sales Inc., we have a wide variety of yachts available on our sale's list. We also work in close contact with all the big yacht manufacturers from all over the world.

If you would like to buy a yacht **COPIHUE — WILLIAMS MARINE** or would like help answering any questions concerning purchasing, selling or chartering a yacht, please call **+1(954)274-4435**

TABLE OF CONTENTS

| | |
|------------------------------|----|
| TABLE OF CONTENTS | 2 |
| SPECIFICATIONS | 3 |
| Overview | 3 |
| Basic Information | 3 |
| Dimensions | 3 |
| Speed, Capacities and Weight | 3 |
| Accommodations | 4 |
| Hull and Deck Information | 4 |
| Engine Information | 4 |
| PHOTOS | 5 |
| CONTACTS | 10 |
| Contact details | 10 |
| Telephones | 10 |
| Office hours | 10 |
| Address | 10 |

SPECIFICATIONS

Overview

Built in 1989 on order at Williams Boatyard and designed by Dubois & Pape, COPIHUE is a Cuttyhunk 54 offered on the sales market in very good condition. Current ownership has spared no money in maintaining and upgrading this lovely cruising ketch; she is loaded with high end equipment, guaranteeing to her next owner plenty of bluewater cruising across the globe.

The interior layout is perfect for a family or a group of friends, offering a large bright living space and two adjoining ensuite cabins for a maximum capacity of 5 berths on board.

Moored in the Port of Nice, she must be inspected to be fully appreciated.

Basic Information

Category: Cruising Ketch

Model Year: 1989

Year Built: 1989

Country: France

Dimensions

LOA: 60' 5" (18.4mm)

Beam: 14.76

Min Draft: 7' 11" (2.4mm)

Speed, Capacities and Weight

Cruise Speed: 7 Knots Kts. (8 MPH)

Max Speed: 9 Knots Kts. (10 MPH)

Water Capacity: 600 Gallons

Fuel Capacity: 264.17 Gal Gallons

Fuel Consumption: 2.38 Gal Gallons

Accommodations

Total Cabins: 2

Total Berths: 5

Total Heads: 2

Hull and Deck Information

Hull Material: Fiberglass Sandwich

Deck Material: Teak and Fiberglass

Hull Color: Navy Blue

Hull Designer: Alan Pape

Exterior Designer: Dubois & Pape

Interior Designer: Dubois & Pape

Engine Information

Engines: 1

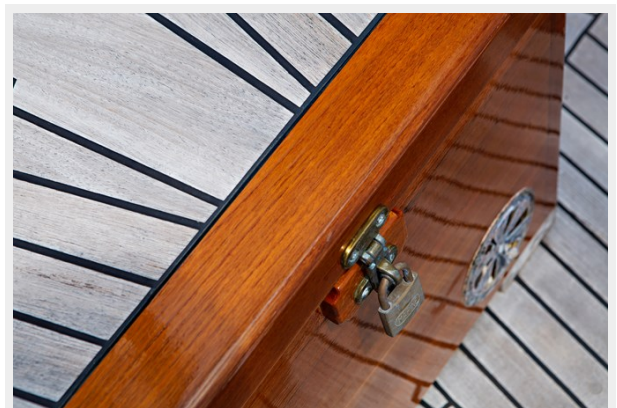
Manufacturer: Volvo

Engine Type: Inboard

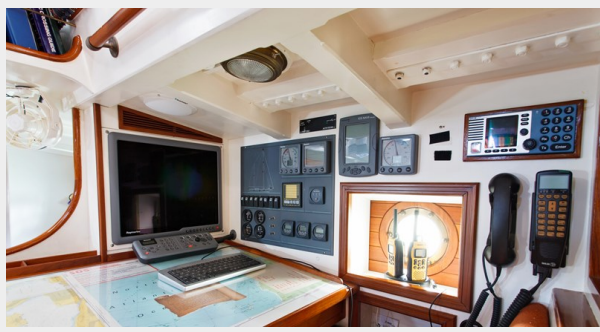
Fuel Type: Diesel

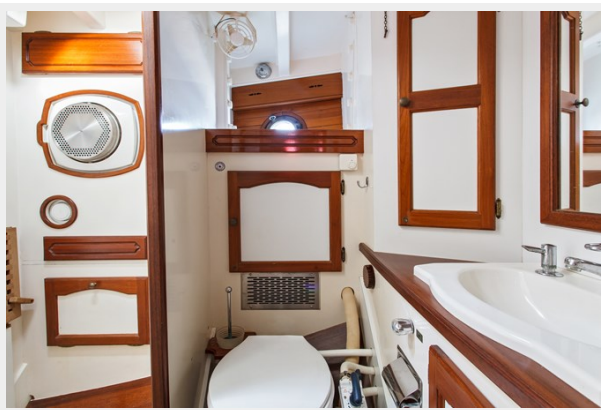
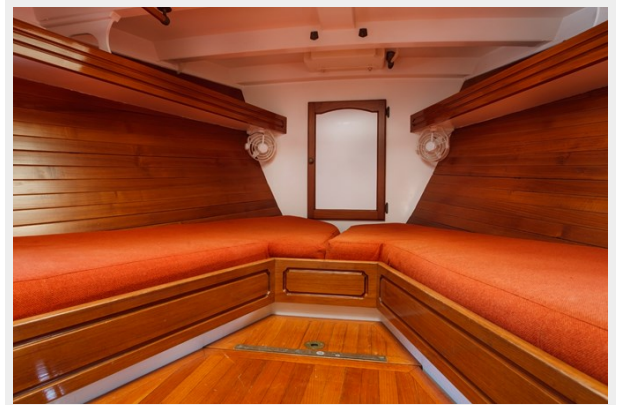
PHOTOS











CONTACTS

Andrey Shestakov, leading yacht broker of the sales department of Shestakov Yacht Sales Inc. Shestakov Yacht Sales Inc., the official representative of the Miami/Fort Lauderdale FL headquarters.

Contact details

Email: andrey@shestakovyachtsales.com

Web: shestakovyachtsales.com/en/

Telephones

USA: +1(954)274-4435

Office hours

Monday – Saturday: **9:00 - 21:00** EDT

Sunday: **closed**

Address



Harbour Towne Marina, 850 NE 3rd St,
STE 213, Dania, FL 33004