

BELLA RONA — PRINCESS YACHTS



Builder: PRINCESS YACHTS

Year Built: 2011

Model: mega yacht

Price: PRICE ON APPLICATION

Location: United States

LOA: 98' (29.87m)

Beam: 23.16

Max Draft: 6' (1.83m)

Cruise Speed: 13 Knots Kts. (15 MPH)

Max Speed: 24 Knots Kts. (28 MPH)

Our experienced yacht broker, Andrey Shestakov, will help you choose and buy a yacht that best suits your needs **BELLA RONA — PRINCESS YACHTS** from our catalogue. Presently, at Shestakov Yacht Sales Inc., we have a wide variety of yachts available on our sale's list. We also work in close contact with all the big yacht manufacturers from all over the world.

If you would like to buy a yacht **BELLA RONA — PRINCESS YACHTS** or would like help answering any questions concerning purchasing, selling or chartering a yacht, please call **+1(954)274-4435**

TABLE OF CONTENTS

TABLE OF CONTENTS	2
SPECIFICATIONS	3
Overview	3
Basic Information	3
Dimensions	3
Speed, Capacities and Weight	3
Accommodations	3
Hull and Deck Information	4
Engine Information	4
PHOTOS	5
CONTACTS	14
Contact details	14
Telephones	14
Office hours	14
Address	14

SPECIFICATIONS

Overview

BELLA RONA, a 2012 98' Princess motor yacht, is one of the finest vessels built by the British luxury yacht builder. With meticulous attention to detail and craftsmanship, there's no question that BELLA RONA is one of the nicest offerings of this size range in today's market.

Basic Information

Category: mega yacht

Sub Category: Superyacht

Model Year: 2012

Year Built: 2011

Country: United States

Dimensions

LOA: 98' (29.87mm)

Beam: 23.16

Max Draft: 6' (1.83mm)

Speed, Capacities and Weight

Cruise Speed: 13 Knots Kts. (15 MPH)

Max Speed: 24 Knots Kts. (28 MPH)

Water Capacity: 352 Gallons

Holding Tank: 110 Gal Gallons

Fuel Capacity: 2905 Gal Gallons

Accommodations

Total Cabins: 4

Sleeps: 8

Total Heads: 5

Crew Cabin: 4

Crew Berths: 4

Crew Heads: 1

Hull and Deck Information

Hull Material: GRP

Hull Configuration: Planing

Hull Color: White

Engine Information

Engines: 2

Manufacturer: MTU

Engine Type: Inboard

Fuel Type: Diesel

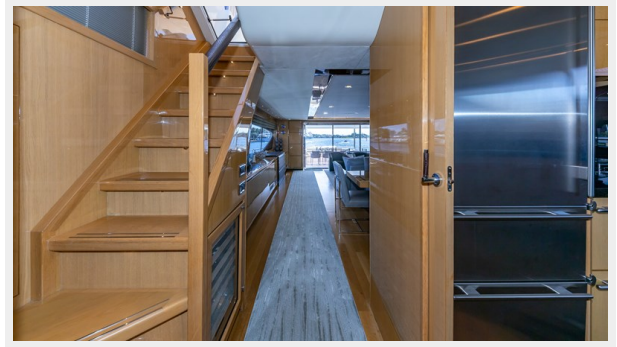
PHOTOS

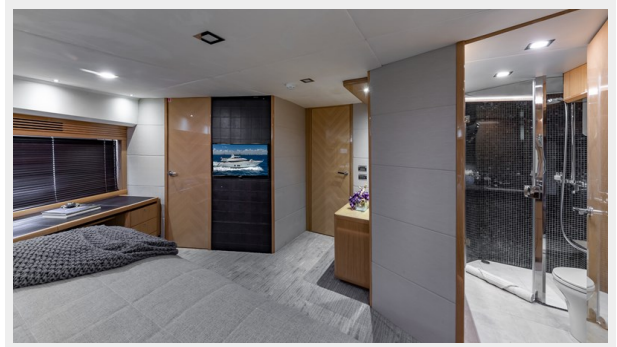
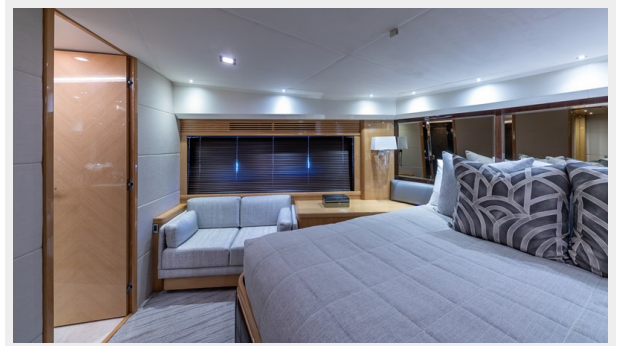
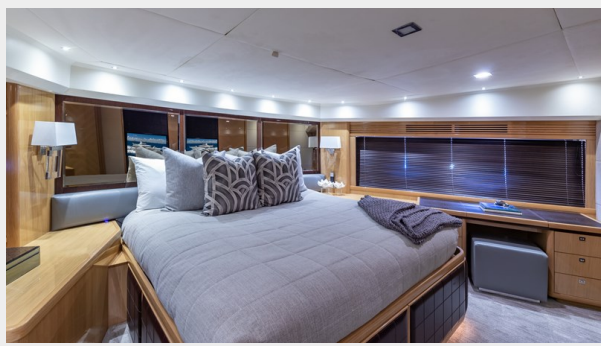


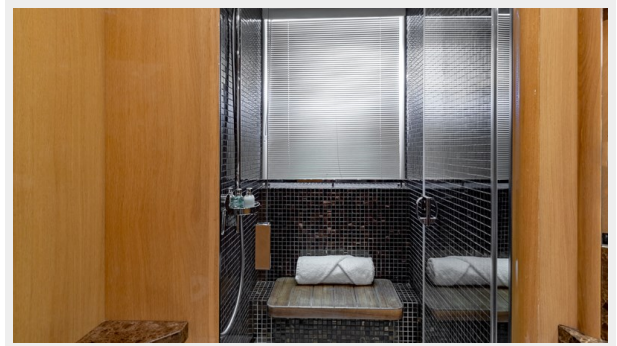




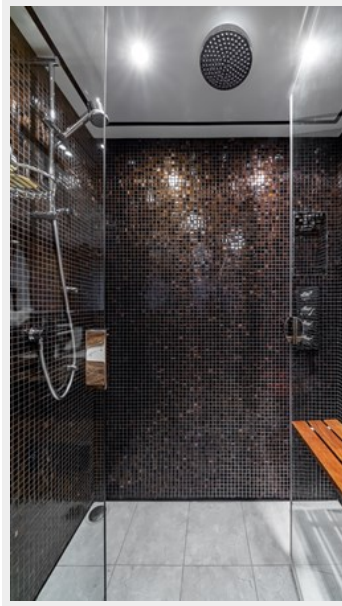












CONTACTS

Andrey Shestakov, leading yacht broker of the sales department of Shestakov Yacht Sales Inc. Shestakov Yacht Sales Inc., the official representative of the Miami/Fort Lauderdale FL headquarters.

Contact details

Email: andrey@shestakovyachtsales.com

Web: shestakovyachtsales.com/en/

Telephones

USA: +1(954)274-4435

Office hours

Monday – Saturday: **9:00 - 21:00** EDT

Sunday: **closed**

Address



Harbour Towne Marina, 850 NE 3rd St,
STE 213, Dania, FL 33004