

## GRAND SLAM — VENTURE MARINE



**Builder:** VENTURE MARINE

**Year Built:** 2005

**Model:** center\_console

**Price:** PRICE ON APPLICATION

**Location:** United States

**LOA:** 39' (11.89mm)

**Beam:** 10.5

**Max Draft:** 2' 6" (0.76mm)

Our experienced yacht broker, Andrey Shestakov, will help you choose and buy a yacht that best suits your needs **Grand Slam — VENTURE MARINE** from our catalogue. Presently, at Shestakov Yacht Sales Inc., we have a wide variety of yachts available on our sale's list. We also work in close contact with all the big yacht manufacturers from all over the world.

If you would like to buy a yacht **Grand Slam — VENTURE MARINE** or would like help answering any questions concerning purchasing, selling or chartering a yacht, please call **+1(954)274-4435**

# TABLE OF CONTENTS

TABLE OF CONTENTS	2
SPECIFICATIONS	4
Overview	4
Basic Information	4
Dimensions	5
Speed, Capacities and Weight	5
Hull and Deck Information	5
Engine Information	5
PHOTOS	6
39_venture_grand_slam_aerial_4	6
39_venture_grand_slam_aerial_5	6
39_venture_grand_slam_aerial_7	6
39_venture_grand_slam_aerial_9	6
39_venture_grand_slam_aerial_11	6
39_venture_grand_slam_aerial_17	6
39_venture_grand_slam_aerial_23	7
39_venture_grand_slam_aerial_27	7
39_venture_grand_slam_aerial_34	7
39_venture_grand_slam_aerial_54	7
39_venture_grand_slam_bow_3	7
39_venture_grand_slam_bow_7	7
39_venture_grand_slam_bow_10	8
39_venture_grand_slam_bow_11	8
39_venture_grand_slam_cockpit_5	8
39_venture_grand_slam_cockpit_6	8
39_venture_grand_slam_cockpit_9	8
39_venture_grand_slam_cockpit_12	8
39_venture_grand_slam_cockpit_15	9

---

39_venture_grand_slam_engines_2	9
39_venture_grand_slam_head_2	9
39_venture_grand_slam_head_3	9
39_venture_grand_slam_helm_2	9
39_venture_grand_slam_helm_4	9
39_venture_grand_slam_tower_4	10
<b>CONTACTS</b>	<b>11</b>
Contact details	11
Telephones	11
Office hours	11
Address	11

---

---

# SPECIFICATIONS

---

## Overview

---

2006 Venture 39 Open

Boat Was Completely Redone 4 Years Ago (New Motor rigging, paint, pipework, tower, electronics, etc)

2021 Mercury 300 V8 Verados With 230 Hours (cold Fusion white)

All New Pipe Work And Tower By Birdsall Marine with schedule 80 aluminum

Birdsall Tackle Master with New Wrap Around Backrest

Two Garmin 7616s

Garmin Auto Pilot

Mercury 502 Vessel View

2 Icom VHF

Fusion Head Unit With JL Audio Speakers

4-JL 10in Subwoofers

2-JL 8.8 Speakers

6-JL 7.7 Speakers

Tower Has A Garmin 7608 And An Icom VHF

Rupp Single Spreader Outrigger (Able To Fold Back For Bridges)

Refrigeration Plates Installed 8 Months Ago In Forward Fish Box

---

## Basic Information

---

**Category:** center\_console

**Sub Category:** Center Console

**Model Year:** 2006

**Year Built:** 2005

**Country:** United States

---

## Dimensions

---

**LOA:** 39' (11.89m)

**Beam:** 10.5

**Max Draft:** 2' 6" (0.76m)

---

## Speed, Capacities and Weight

---

**Water Capacity:** 50 Gallons

**Holding Tank:** 11 Gal Gallons

**Fuel Capacity:** 550 Gal Gallons

---

## Hull and Deck Information

---

**Hull Material:** Fiberglass

---

## Engine Information

---

**Engines:** 3

**Manufacturer:** Mercury

**Engine Type:** Outboard

**Fuel Type:** Gas

# PHOTOS

39\_venture\_grand\_slam\_aerial\_4



39\_venture\_grand\_slam\_aerial\_5



39\_venture\_grand\_slam\_aerial\_7



39\_venture\_grand\_slam\_aerial\_9



39\_venture\_grand\_slam\_aerial\_11



39\_venture\_grand\_slam\_aerial\_17



39\_venture\_grand\_slam\_aerial\_23



39\_venture\_grand\_slam\_aerial\_27



39\_venture\_grand\_slam\_aerial\_34



39\_venture\_grand\_slam\_aerial\_54



39\_venture\_grand\_slam\_bow\_3



39\_venture\_grand\_slam\_bow\_7



39\_venture\_grand\_slam\_bow\_10



39\_venture\_grand\_slam\_bow\_11



39\_venture\_grand\_slam\_cockpit\_5



39\_venture\_grand\_slam\_cockpit\_6



39\_venture\_grand\_slam\_cockpit\_9



39\_venture\_grand\_slam\_cockpit\_12





39\_venture\_grand\_slam\_cockpit\_15



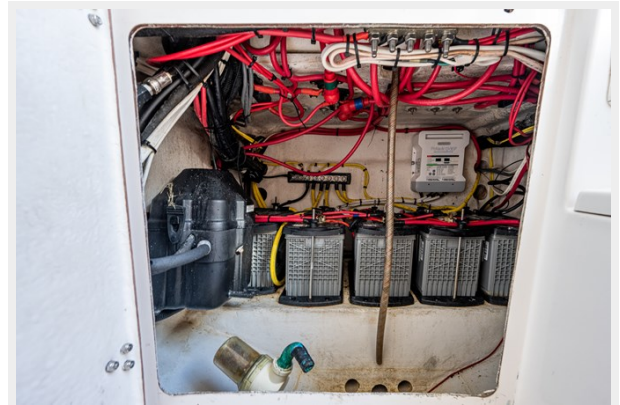
39\_venture\_grand\_slam\_engines\_2



39\_venture\_grand\_slam\_head\_2



39\_venture\_grand\_slam\_head\_3



39\_venture\_grand\_slam\_helm\_2



39\_venture\_grand\_slam\_helm\_4



### 39\_venture\_grand\_slam\_tower\_4



# CONTACTS

---

Andrey Shestakov, leading yacht broker of the sales department of Shestakov Yacht Sales Inc. Shestakov Yacht Sales Inc., the official representative of the Miami/Fort Lauderdale FL headquarters.

## Contact details

---

Email: [andrey@shestakovyachtsales.com](mailto:andrey@shestakovyachtsales.com)

Web: [shestakovyachtsales.com/en/](http://shestakovyachtsales.com/en/)

## Telephones

---

USA: +1(954)274-4435

## Office hours

---

Monday – Saturday: **9:00 - 21:00** EDT

Sunday: **closed**

## Address

---



Harbour Towne Marina, 850 NE 3rd St,  
STE 213, Dania, FL 33004