

AZIMUT 53 FLY — AZIMUT YACHTS



Builder: [AZIMUT YACHTS](#)

Year Built: 2022

Model: Motor Yacht

Price: PRICE ON APPLICATION

Location: United States

LOA: 53' (16.15mm)

Beam: 16.75

Max Draft: 4' 8" (1.42mm)

Cruise Speed: 20 Knots Kts. (23 MPH)

Our experienced yacht broker, Andrey Shestakov, will help you choose and buy a yacht that best suits your needs **Azimut 53 Fly — AZIMUT YACHTS** from **our catalogue**. Presently, at **Shestakov Yacht Sales Inc.**, we have a wide variety of yachts available on **our sale's list**. We also work in close contact with all the big **yacht manufacturers** from all over the world.

If you would like to buy a yacht **Azimut 53 Fly — AZIMUT YACHTS** or would like help answering any questions concerning purchasing, selling or chartering a yacht, please call **+1(954)274-4435**

TABLE OF CONTENTS

| | |
|----------------------------------------|----|
| TABLE OF CONTENTS | 2 |
| SPECIFICATIONS | 6 |
| Overview | 6 |
| Basic Information | 6 |
| Dimensions | 6 |
| Speed, Capacities and Weight | 6 |
| Accommodations | 6 |
| Hull and Deck Information | 7 |
| Engine Information | 7 |
| PHOTOS | 8 |
| 8601898_20221120063222523_1_XLARGE | 8 |
| 8601898_20221120063157574_1_XLARGE | 8 |
| 8601898_20221120063213514_1_XLARGE (1) | 8 |
| 8601898_20221120063200471_1_XLARGE | 8 |
| 8601898_20221120063216474_1_XLARGE (1) | 8 |
| 8601898_20221120065102138_1_XLARGE | 8 |
| 8601898_20221120065059379_1_XLARGE | 9 |
| 8601898_20221120065104202_1_XLARGE | 9 |
| 8601898_20221120065106142_1_XLARGE | 9 |
| 8601898_20221120065109312_1_XLARGE | 9 |
| 8601898_20221120063203475_1_XLARGE | 9 |
| 8601898_20221120065112201_1_XLARGE | 9 |
| 8601898_20221120063209877_1_XLARGE (1) | 10 |
| 8601898_20221120063206528_1_XLARGE | 10 |
| 8601898_20221120063209877_1_XLARGE | 10 |
| 8601898_20221120064823017_1_XLARGE | 10 |
| 8601898_20221120064825145_1_XLARGE | 10 |
| 8601898_20221120064828020_1_XLARGE | 10 |

| | |
|------------------------------------|----|
| 8601898_20221120064829990_1_XLARGE | 11 |
| 8601898_20221120064833044_1_XLARGE | 11 |
| 8601898_20221120064837052_1_XLARGE | 11 |
| 8601898_20221120064835046_1_XLARGE | 11 |
| 8601898_20221120064841155_1_XLARGE | 11 |
| 8601898_20221120064838989_1_XLARGE | 11 |
| 8601898_20221120064846032_1_XLARGE | 12 |
| 8601898_20221120064843107_1_XLARGE | 12 |
| 8601898_20221120064848987_1_XLARGE | 12 |
| 8601898_20221120064851502_1_XLARGE | 12 |
| 8601898_20221120064854492_1_XLARGE | 12 |
| 8601898_20221120064857144_1_XLARGE | 12 |
| 8601898_20221120064902009_1_XLARGE | 13 |
| 8601898_20221120064859088_1_XLARGE | 13 |
| 8601898_20221120064942326_1_XLARGE | 13 |
| 8601898_20221120064938008_1_XLARGE | 13 |
| 8601898_20221120064945225_1_XLARGE | 14 |
| 8601898_20221120064947105_1_XLARGE | 14 |
| 8601898_20221120064950029_1_XLARGE | 14 |
| 8601898_20221120064954058_1_XLARGE | 14 |
| 8601898_20221120064958083_1_XLARGE | 15 |
| 8601898_20221120064952053_1_XLARGE | 15 |
| 8601898_20221120065000084_1_XLARGE | 15 |
| 8601898_20221120064956362_1_XLARGE | 15 |
| 8601898_20221120064958083_1_XLARGE | 16 |
| 8601898_20221120065000084_1_XLARGE | 16 |
| 8601898_20221120065003124_1_XLARGE | 16 |
| 8601898_20221120065005087_1_XLARGE | 16 |
| 8601898_20221120065007186_1_XLARGE | 17 |

| | |
|------------------------------------|----|
| 8601898_20221120065009296_1_XLARGE | 17 |
| 8601898_20221120065011994_1_XLARGE | 17 |
| 8601898_20221120065014148_1_XLARGE | 17 |
| 8601898_20221120065017175_1_XLARGE | 17 |
| 8601898_20221120065018922_1_XLARGE | 17 |
| 8601898_20221120065023104_1_XLARGE | 18 |
| 8601898_20221120065025038_1_XLARGE | 18 |
| 8601898_20221120065047161_1_XLARGE | 18 |
| 8601898_20221120065028213_1_XLARGE | 18 |
| 8601898_20221120065031142_1_XLARGE | 18 |
| 8601898_20221120065036114_1_XLARGE | 18 |
| 8601898_20221120065038126_1_XLARGE | 19 |
| 8601898_20221120065040387_1_XLARGE | 19 |
| 8601898_20221120065045161_1_XLARGE | 19 |
| 8601898_20221120065043155_1_XLARGE | 19 |
| 8601898_20221120065050193_1_XLARGE | 19 |
| 8601898_20221120065052317_1_XLARGE | 19 |
| 8601898_20221120065055103_1_XLARGE | 20 |
| 8601898_20221120065112201_1_XLARGE | 20 |
| 8601898_20221120065057203_1_XLARGE | 20 |
| 8601898_20221120065059379_1_XLARGE | 20 |
| 8601898_20221120065102138_1_XLARGE | 20 |
| 8601898_20221120065104202_1_XLARGE | 20 |
| 8601898_20221120065106142_1_XLARGE | 21 |
| 8601898_20221120065109312_1_XLARGE | 21 |
| 8601898_20221120065033174_1_XLARGE | 21 |
| 8601898_20221120064905864_1_XLARGE | 21 |
| 8601898_20221120064935942_1_XLARGE | 21 |
| 8601898_20221120064913084_1_XLARGE | 21 |

| | |
|------------------------------------|----|
| 8601898_20221120064918962_1_XLARGE | 22 |
| 8601898_20221120064910040_1_XLARGE | 22 |
| 8601898_20221120064927484_1_XLARGE | 22 |
| 8601898_20221120064908318_1_XLARGE | 22 |
| 8601898_20221120064933178_1_XLARGE | 22 |
| 8601898_20221120064904008_1_XLARGE | 22 |
| 8601898_20221120064930070_1_XLARGE | 23 |
| 8601898_20221120064916095_1_XLARGE | 23 |
| 8601898_20221120064921252_1_XLARGE | 23 |
| 8601898_20221120065021181_1_XLARGE | 23 |
| 8601898_20221120064924101_1_XLARGE | 23 |
| 8601898_20221120134505950_1_XLARGE | 23 |
| CONTACTS | 24 |
| Contact details | 24 |
| Telephones | 24 |
| Office hours | 24 |
| Address | 24 |

SPECIFICATIONS

Overview

New to the market, OUR TRADE, this 2022 Azimut 53 Flybridge is immaculate and ready for delivery to its new owners.

One of the first of its kind to arrive in the US and features fully loaded options.

Showcasing an ideal layout offering 3 staterooms 2 heads and aft galley for entertaining via the cockpit.

Volvo-Penta IPS950 engines with under 100 hours, equipped with docking station, DPS and extended warranty coverage through January 2027.

Elegantly designed with the perfect combination of comfort, ambience and luxury.

Basic Information

Category: Motor Yacht

Sub Category: Flybridge

Model Year: 2022

Year Built: 2022

Country: United States

Dimensions

LOA: 53' (16.15mm)

Beam: 16.75

Max Draft: 4' 8" (1.42mm)

Speed, Capacities and Weight

Cruise Speed: 20 Knots Kts. (23 MPH) **Water Capacity:** 155 Gallons

Holding Tank: 46 Gal Gallons

Fuel Capacity: 317 Gal Gallons

Accommodations

Total Cabins: 3

Total Heads: 2

Hull and Deck Information

Hull Material: Fiberglass

Engine Information

Engines: 2

Manufacturer: Volvo Penta

Engine Type: Inboard

Fuel Type: Diesel

PHOTOS

8601898_20221120063222523_1_XLARGE



8601898_20221120063157574_1_XLARGE



8601898_20221120063200471_1_XLARGE



**8601898_20221120063213514_1_XLARGE
(1)**



**8601898_20221120063216474_1_XLARGE
(1)**



8601898_20221120065102138_1_XLARGE



8601898_20221120065059379_1_XLARGE 8601898_20221120065104202_1_XLARGE



8601898_20221120065106142_1_XLARGE 8601898_20221120065109312_1_XLARGE



8601898_20221120065112201_1_XLARGE 8601898_20221120063203475_1_XLARGE



8601898_20221120063209877_1_XLARGE
(1)

8601898_20221120063206528_1_XLARGE



8601898_20221120063209877_1_XLARGE



8601898_20221120064823017_1_XLARGE



8601898_20221120064825145_1_XLARGE 8601898_20221120064828020_1_XLARGE



8601898_20221120064829990_1_XLARGE 8601898_20221120064833044_1_XLARGE



8601898_20221120064837052_1_XLARGE

8601898_20221120064835046_1_XLARGE



8601898_20221120064841155_1_XLARGE

8601898_20221120064838989_1_XLARGE



8601898_20221120064846032_1_XLARGE

8601898_20221120064843107_1_XLARGE



8601898_20221120064848987_1_XLARGE 8601898_20221120064851502_1_XLARGE



8601898_20221120064854492_1_XLARGE 8601898_20221120064857144_1_XLARGE



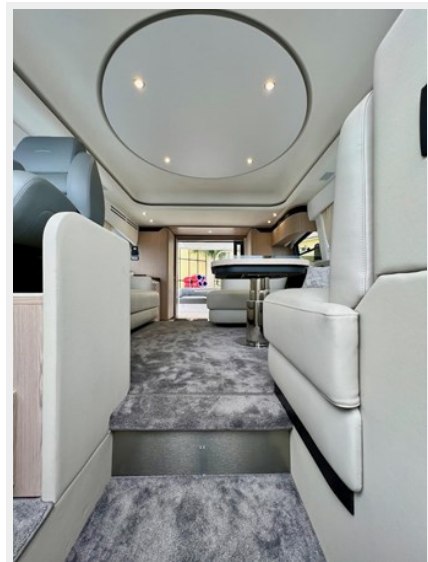
8601898_20221120064902009_1_XLARGE

8601898_20221120064859088_1_XLARGE



8601898_20221120064942326_1_XLARGE

8601898_20221120064938008_1_XLARGE



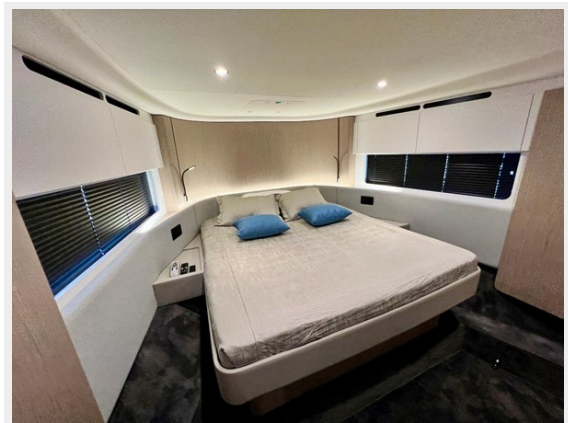
8601898_20221120064945225_1_XLARGE 8601898_20221120064947105_1_XLARGE



8601898_20221120064950029_1_XLARGE

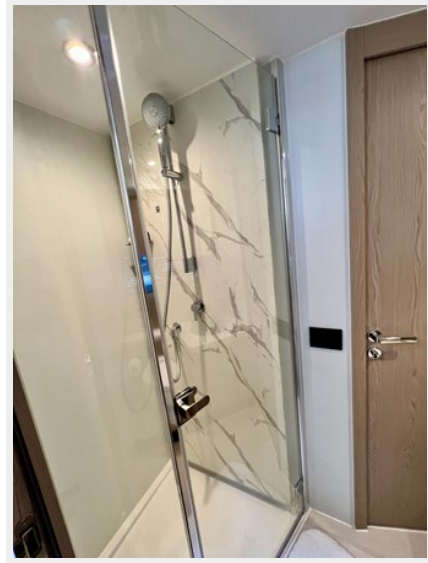


8601898_20221120064954058_1_XLARGE



8601898_20221120064958083_1_XLARGE

8601898_20221120064952053_1_XLARGE



8601898_20221120065000084_1_XLARGE 8601898_20221120064956362_1_XLARGE



8601898_20221120064958083_1_XLARGE 8601898_2022112006500084_1_XLARGE



8601898_20221120065003124_1_XLARGE 8601898_20221120065005087_1_XLARGE



8601898_20221120065007186_1_XLARGE



8601898_20221120065009296_1_XLARGE



8601898_20221120065011994_1_XLARGE 8601898_20221120065014148_1_XLARGE



8601898_20221120065017175_1_XLARGE 8601898_20221120065018922_1_XLARGE



8601898_20221120065023104_1_XLARGE 8601898_20221120065025038_1_XLARGE



8601898_20221120065047161_1_XLARGE



8601898_20221120065028213_1_XLARGE



8601898_20221120065031142_1_XLARGE 8601898_20221120065036114_1_XLARGE



8601898_20221120065038126_1_XLARGE



8601898_20221120065040387_1_XLARGE



8601898_20221120065045161_1_XLARGE

8601898_20221120065043155_1_XLARGE



8601898_20221120065050193_1_XLARGE 8601898_20221120065052317_1_XLARGE



8601898_20221120065055103_1_XLARGE 8601898_20221120065112201_1_XLARGE



8601898_20221120065057203_1_XLARGE



8601898_20221120065059379_1_XLARGE



8601898_20221120065102138_1_XLARGE 8601898_20221120065104202_1_XLARGE



8601898_20221120065106142_1_XLARGE 8601898_20221120065109312_1_XLARGE



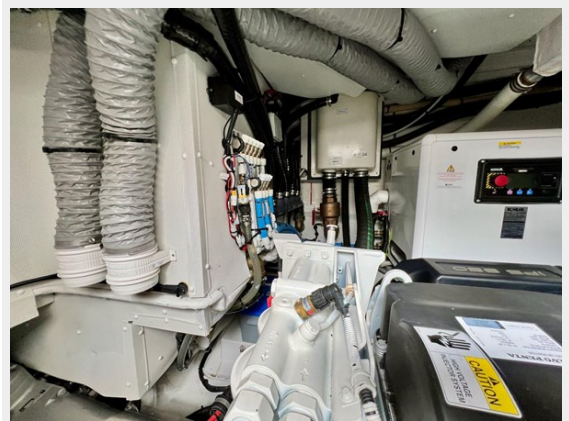
8601898_20221120065033174_1_XLARGE 8601898_20221120064905864_1_XLARGE



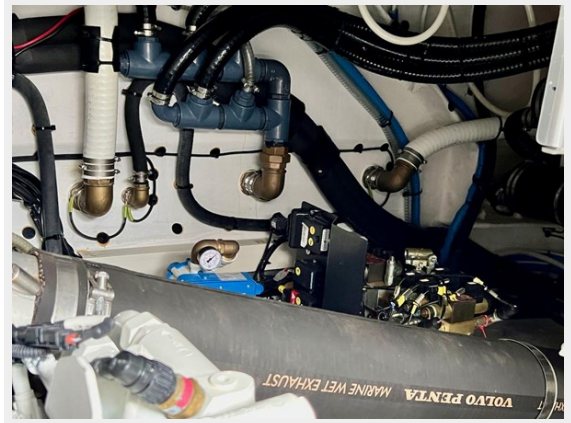
8601898_20221120064935942_1_XLARGE



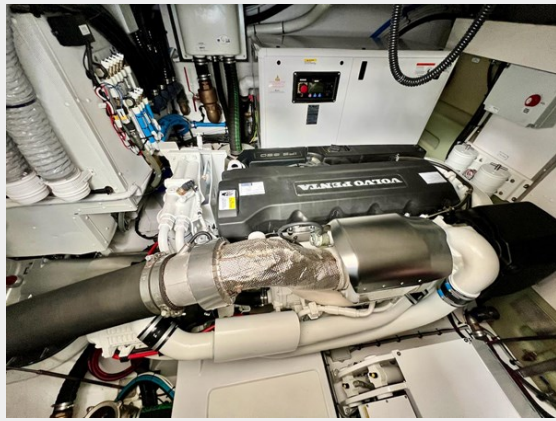
8601898_20221120064913084_1_XLARGE



8601898_20221120064918962_1_XLARGE 8601898_20221120064910040_1_XLARGE



8601898_20221120064927484_1_XLARGE 8601898_20221120064908318_1_XLARGE



8601898_20221120064933178_1_XLARGE 8601898_20221120064904008_1_XLARGE



8601898_20221120064930070_1_XLARGE 8601898_20221120064916095_1_XLARGE



8601898_20221120064921252_1_XLARGE 8601898_20221120065021181_1_XLARGE



8601898_20221120064924101_1_XLARGE 8601898_20221120134505950_1_XLARGE



TECHNICAL SPECIFICATION

| | |
|-------------------------------|------------------------------|
| Length overall (incl. pulpit) | 16,78 m (55' 1") |
| Beam max | 4,95 m (16' 3") |
| Displacement (at full load) | 20,5 t |
| Engines | 2 x Volvo Penta IPS 125 hp |
| Maximum speed | up to 31 knots |
| Cruising speed | up to 27 knots |
| Fuel capacity | 2000 l (528 US Gal) |
| Water capacity | 500 l (132 US Gal) |
| Cabins | 3 x 1 |
| Berths | 6 x 1 |
| Head compartments | 2 x 1 |
| Building material | GFRP |
| Exterior styling & concept | Alberto Mancini Yacht Design |
| Builder | Azimut Yachts |

Approximate specifications for the above design are shown and apply to a standard configuration. Actual specifications may vary depending on the selected options. For more information, please contact your local dealer or the manufacturer. © 2022 Azimut Yachts. All rights reserved. The information is provided for informational purposes only. The information is not intended to be used as a basis for any purchase or sale of a yacht. The information is not intended to be used as a basis for any purchase or sale of a yacht. The information is not intended to be used as a basis for any purchase or sale of a yacht.

CONTACTS

Andrey Shestakov, leading yacht broker of the sales department of Shestakov Yacht Sales Inc. Shestakov Yacht Sales Inc., the official representative of the Miami/Fort Lauderdale FL headquarters.

Contact details

Email: **andrey@shestakovyachtsales.com**

Web: shestakovyachtsales.com/en/

Telephones

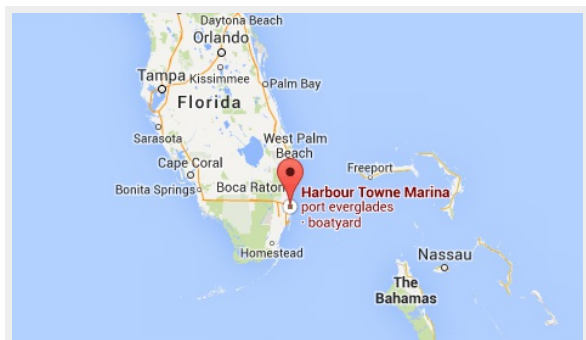
USA: **+1(954)274-4435**

Office hours

Monday – Saturday: **9:00 - 21:00** EDT

Sunday: **closed**

Address



Harbour Towne Marina, 850 NE 3rd St, STE 213, Dania, FL 33004