

ISLAND GIRL — L&H



Builder: L&H

Year Built: 2016

Model: Sport Fisherman

Price: PRICE ON APPLICATION

Location: United States

LOA: 33' (10.06mm)

Beam: 12.16

Min Draft: 3' (0.91mm)

Cruise Speed: 29 Knots Kts. (33 MPH)

Max Speed: 32 Knots Kts. (37 MPH)

Our experienced yacht broker, Andrey Shestakov, will help you choose and buy a yacht that best suits your needs **ISLAND GIRL — L&H** from our catalogue. Presently, at Shestakov Yacht Sales Inc., we have a wide variety of yachts available on our sale's list. We also work in close contact with all the big yacht manufacturers from all over the world.

If you would like to buy a yacht **ISLAND GIRL — L&H** or would like help answering any questions concerning purchasing, selling or chartering a yacht, please call **+1(954)274-4435**

TABLE OF CONTENTS

TABLE OF CONTENTS	2
SPECIFICATIONS	5
Overview	5
Basic Information	5
Dimensions	5
Speed, Capacities and Weight	5
Accommodations	5
Hull and Deck Information	5
Engine Information	6
PHOTOS	7
Off the Dock	7
Coming Out from Winter Storage, Montauk, NY	7
Custom Bluewater Chairs	7
Teak Helm Pod, Thruster Control Button Single Levers, Joystick	7
Garmin Full Touchscreen Package	7
GG Canvas, Track to Track Fitted, Vent Panel Above Center	8
Custom Teak Cap Railing	8
Analog Gauges, Digital Tachs, Glendinning Controls	8
Touchscreen Garmins	8
Fold-Up Table Top	8
Custom Trolling Seat	8
Removable Backrest	9
Bait Freezer and Storage	9
Cabin Entry, Removable Door Panels	9
Cabin	9
Cabin Entry with Grabrail	9
Newer SAT Phone with Handset in Cabin	9
V-Berth with Storage Drawers	10

AirCond Digital Thermostat, Fusion Stereo, Gen Panel	10
Freshwater Head	10
Mirrored Medicine Cabinet	10
Main Electrical Panel	10
LG Microwave	10
Helm Console, Newer Joystick Control Next to Pod	11
Exterior Systems Switch Panel, Drawer Tackle Storage	11
029 Bluewater Teak Rocket Launcher, Non-Skid Decks	11
Custom Sized Helm Chairs with Footrests	11
Fighting Chair with Rigging Tray-Rocket Launcher Backrest (Stored off Boat)	11
Chair Footrest (Stored Off Boat)	11
Mascerated -Refrigerated Fishbox Behind Fighting Chair	12
Transom Livewell or Refrigerated Kill Box	12
Rudder Table Access, Folding Dive Ladder	12
Fresh & Saltwater Washdowns	12
DC Electric Reel Outlets	12
Full Tower Control Station	12
Radio Box and Wired Teaser Reel Controls	13
Tower Bench Seat, Center Rigger	13
Extra Rod Holders, EPIRB with Hydrostatic Release	13
Pop-Up Midship Cleats	13
Maxwell Self-Tailing Windlass with Stainless Anchor, Pop-Up Bow Cleats	13
Full Walk-Around with Flush Rod Holders	13
Beautiful Hardtops, Poly Forward Enclosure Panels, LED Running Lights,	14
New FLIR Camera	14
046 Walk-Around Side Decks, Engine Room Vents, Inboard Tower Legs	14
047 Secure Gaff Racks, Electric Lift Engine Hatch Switch	14
Engine Hatch Up, Cummins Common-Rail QSBs	14
Electric Computer Teaser Reels and Pancake-Style Manual Reels	14

050 Engine Room Entrance Hatch Forward of Helm	15
ER Entry Ladder	15
Spare Prop, 110v Compressors and Thermostats	15
Mounted Spare Prop and 12v Compressor	15
Battery Switches and Sub Panel	15
Engine Compartment from Forward	15
Forward Portside Engine Room, Racor Primary Fuel Filter	16
Forward Starboard Side Engine Room	16
Port Motor and Northern Lights Generator	16
Starboard Motor	16
Hours as of May 15, 2022	16
Odyssey Batteries Outboard Port Motor	16
Generator Hours, as of May 15, 2022	17
Bow Thruster	17
Covers for Chairs, Footrests , Helm, and Rocket Launcher	17
SeaBlaze Spectrum Underwater Lights	17
LED Lights Up Nice, Multicolor Underwater Lights	17
Speedy and Nimble	17
Profile	18
CONTACTS	19
Contact details	19
Telephones	19
Office hours	19
Address	19

SPECIFICATIONS

Overview

N/A

Basic Information

Category: Sport Fisherman

Model Year: 2017

Year Built: 2016

Country: United States

Dimensions

LOA: 33' (10.06mm)

Beam: 12.16

Min Draft: 3' (0.91mm)

Speed, Capacities and Weight

Cruise Speed: 29 Knots Kts. (33 MPH)

Max Speed: 32 Knots Kts. (37 MPH)

Water Capacity: 75 Gallons

Fuel Capacity: 300 Gal Gallons

Accommodations

Total Cabins: 1

Total Heads: 1

Hull and Deck Information

Hull Material: Fiberglass

Hull Configuration: Modified V-Hull

Engine Information

Engines: 2

Manufacturer: Cummins

Engine Type: Inboard

Fuel Type: Diesel

PHOTOS

Off the Dock



Coming Out from Winter Storage, Montauk, NY



Custom Bluewater Chairs



Garmin Full Touchscreen Package



**Teak Helm Pod, Thruster Control Button
Single Levers, Joystick**



Custom Teak Cap Railing



GG Canvas, Track to Track Fitted, Vent Panel Above Center



Analog Gauges, Digital Tachs, Glendinning Controls



Touchscreen Garmins



Fold-Up Table Top



Custom Trolling Seat



Removable Backrest



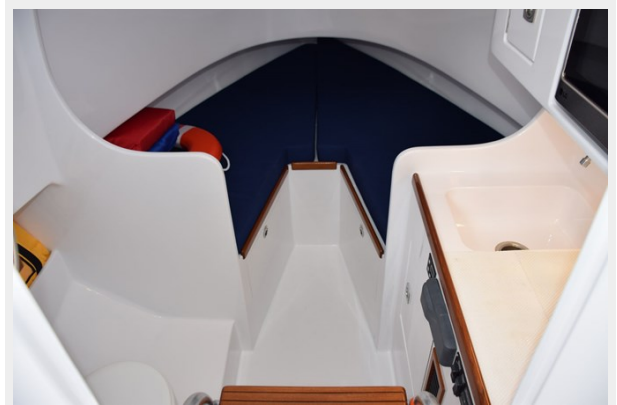
Bait Freezer and Storage



Cabin Entry, Removable Door Panels



Cabin



Cabin Entry with Grabrail



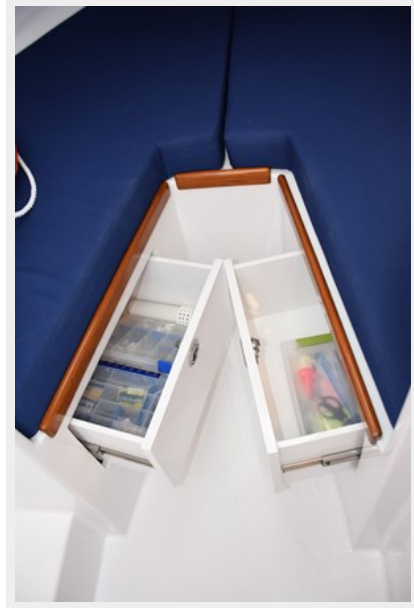
Newer SAT Phone with Handset in Cabin



AirCond Digital Thermostat, Fusion Stereo, Gen Panel



V-Berth with Storage Drawers



Freshwater Head



Mirrored Medicine Cabinet



Main Electrical Panel



LG Microwave



Helm Console, Newer Joystick Control Next to Pod



Exterior Systems Switch Panel, Drawer Tackle Storage



Custom Sized Helm Chairs with Footrests



029 Bluewater Teak Rocket Launcher, Non-Skid Decks



Fighting Chair with Rigging Tray-Rocket Launcher Backrest (Stored off Boat)



Chair Footrest (Stored Off Boat)



Macerated -Refrigerated Fishbox Behind Fighting Chair



Transom Livewell or Refrigerated Kill Box



Rudder Table Access, Folding Dive Ladder



Fresh & Saltwater Washdowns



DC Electric Reel Outlets



Full Tower Control Station



Radio Box and Wired Teaser Reel Controls



Tower Bench Seat, Center Rigger



Extra Rod Holders, EPIRB with Hydrostatic Release



Pop-Up Midship Cleats



Full Walk-Around with Flush Rod Holders



Maxwell Self-Tailing Windlass with Stainless Anchor, Pop-Up Bow Cleats



Beautiful Hardtops, Poly Forward Enclosure Panels, LED Running Lights,



New FLIR Camera



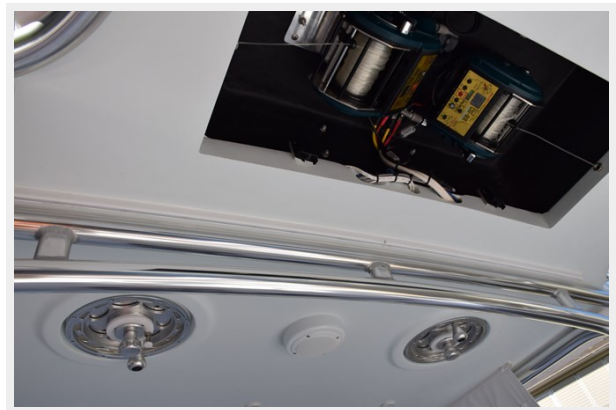
046 Walk-Around Side Decks, Engine Room Vents, Inboard Tower Legs 047 Secure Gaff Racks, Electric Lift Engine Hatch Switch



Engine Hatch Up, Cummins Common-Rail QSBs



Electric Computer Teaser Reels and Pancake-Style Manual Reels



050 Engine Room Entrance Hatch Forward of Helm



ER Entry Ladder



Mounted Spare Prop and 12v Compressor



Spare Prop, 110v Compressors and Thermostats



Battery Switches and Sub Panel



Engine Compartment from Forward



**Forward Portside Engine Room, Racor
Primary Fuel Filter**



Forward Starboard Side Engine Room



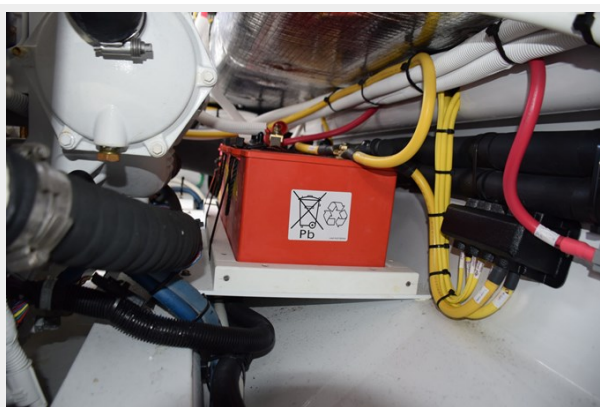
Port Motor and Northern Lights Generator



Starboard Motor



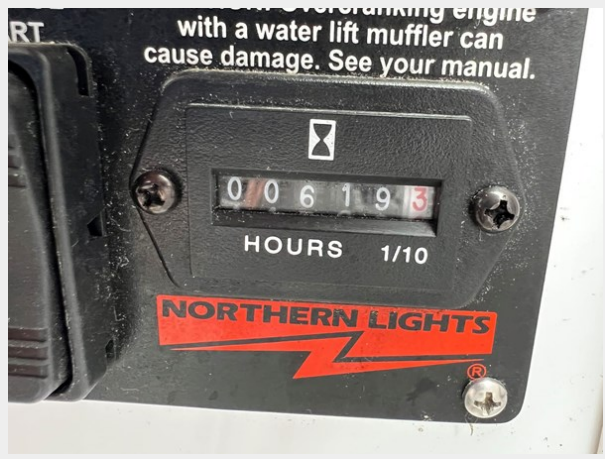
Odyssey Batteries Outboard Port Motor



Hours as of May 15, 2022



Generator Hours, as of May 15, 2022



Bow Thruster



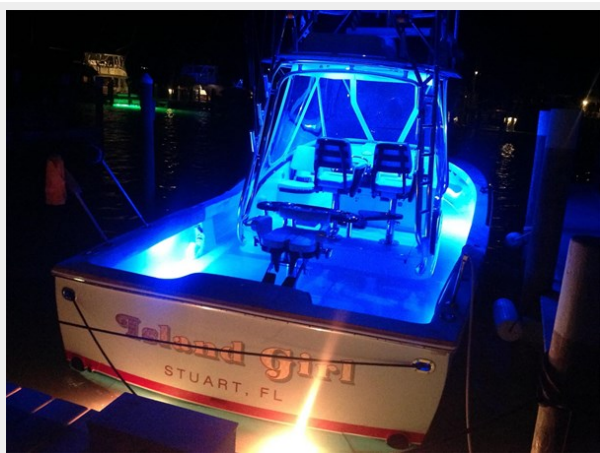
SeaBlaze Spectrum Underwater Lights



Covers for Chairs, Footrests, Helm, and Rocket Launcher



LED Lights Up Nice, Multicolor Underwater Lights



Speedy and Nimble



Profile



CONTACTS

Andrey Shestakov, leading yacht broker of the sales department of Shestakov Yacht Sales Inc. Shestakov Yacht Sales Inc., the official representative of the Miami/Fort Lauderdale FL headquarters.

Contact details

Email: andrey@shestakovyachtsales.com

Web: shestakovyachtsales.com/en/

Telephones

USA: +1(954)274-4435

Office hours

Monday – Saturday: **9:00 - 21:00** EDT

Sunday: **closed**

Address



Harbour Towne Marina, 850 NE 3rd St,
STE 213, Dania, FL 33004