

WIRELESS — VIKING



Builder: VIKING

Year Built: 2007

Model: Sport Fisherman

Price: PRICE ON APPLICATION

Location: United States

LOA: 64' (19.51mm)

Beam: 19.16

Min Draft: 5' 1" (1.55mm)

Max Draft: 5' 3" (1.6mm)

Cruise Speed: 25 Knots Kts. (29 MPH)

Max Speed: 32 Knots Kts. (37 MPH)

Our experienced yacht broker, Andrey Shestakov, will help you choose and buy a yacht that best suits your needs **WIRELESS — VIKING** from our catalogue. Presently, at Shestakov Yacht Sales Inc., we have a wide variety of yachts available on our sale's list. We also work in close contact with all the big yacht manufacturers from all over the world.

If you would like to buy a yacht **WIRELESS — VIKING** or would like help answering any questions concerning purchasing, selling or chartering a yacht, please call **+1(954)274-4435**

TABLE OF CONTENTS

TABLE OF CONTENTS	2
SPECIFICATIONS	6
Overview	6
Basic Information	6
Dimensions	6
Speed, Capacities and Weight	6
Accommodations	6
Hull and Deck Information	7
Engine Information	7
PHOTOS	8
Salon Looking Forward	8
Salon to Port	8
Salon to Stbd.	8
Salon Electric Panel	8
Salon Looking Aft	8
Custom Salon Cocktail Table	8
Enclosed Flybridge Steps	9
Salon Looking Aft	9
Dinette to Starboard	9
Salon TV	9
Companionway to Below	9
Galley Looking Aft	9
Galley Looking Forward	10
Galley Looking Aft	10
Galley Refrigerator	10
Hidden Microwave	10
Ample Pull Out Storage	10
Companionway Looking Forward	10

Companionway Looking Aft	11
Companionway Laundry Center	11
Companionway Linen Locker	11
Master	11
Master Looking Forward	12
Master	12
Master Head	12
Stbd. Side Twin Looking Aft	12
Stbd. Side Twin Looking Forward	12
Stbd. Guest Head	12
Stbd. Side Bunk Room	13
Stbd. Side Bunk Room	13
VIP Looking Forward	13
VIP to Stbd.	13
VIP to Port	13
VIP Head	13
Enclosed Bridge Settee	14
Enclosed Bridge Bar	14
Helm	14
Helm to Port	14
Helm Center	14
Helm to Stbd.	14
Port Helm Seat	15
Captains Stidd Chair	15
Starboard Helm Seat	15
Bridge Deck Seating	15
Aft Control Station	15
Bridge Deck	15
Mast	16

Rocket Launcher	16
Coach Roof Equipment	16
Bow	16
15' Walker Bay	16
15' Walker Bay	16
15' Walker Bay	17
15' Walker Bay	17
Cockpit	17
Cockpit	17
Mezzanine	17
Mezzanine	17
Cockpit	18
Cockpit	18
Release Chair	18
From Above	18
Mezzanine Seating	18
Stern shot	18
Port Engine	19
Port Engine	19
Stbd. Engine	19
Stbd. Engine	19
Stbd. Engine	19
A/C Outboard Stbd. Engine	19
Port Engine	20
Outboard Port Engine	20
Port Gen	20
Stbd Gen	20
Clean Wake	20
Stern Quarter	20

Bow Quarter	21
Transom	21
Alternate Profile	21
Stern Quarter	21
Profile	21
CONTACTS	22
Contact details	22
Telephones	22
Office hours	22
Address	22

SPECIFICATIONS

Overview

N/A

Basic Information

Category: Sport Fisherman

Model Year: 2007

Year Built: 2007

Country: United States

Dimensions

LOA: 64' (19.51mm)

Beam: 19.16

Min Draft: 5' 1" (1.55mm)

Max Draft: 5' 3" (1.6mm)

Speed, Capacities and Weight

Cruise Speed: 25 Knots Kts. (29 MPH)

Max Speed: 32 Knots Kts. (37 MPH)

Gross Tonnage: 55 Pounds

Water Capacity: 325 Gallons

Holding Tank: 200 Gal Gallons

Fuel Capacity: 2193 Gal Gallons

Accommodations

Total Cabins: 4

Sleeps: 8

Total Heads: 3

Hull and Deck Information

Hull Material: Fiberglass

Deck Material: Teak

Hull Configuration: Modified V-Hull

Hull Designer: Viking

Exterior Designer: Viking Yachts

Interior Designer: Viking Yachts

Engine Information

Engines: 2

Manufacturer: Caterpillar

Engine Type: Inboard

Fuel Type: Diesel

PHOTOS

Salon Looking Forward



Salon to Port



Salon to Stbd.



Salon Electric Panel



Salon Looking Aft



Custom Salon Cocktail Table



Salon Looking Aft



Enclosed Flybridge Steps



Dinette to Starboard



Salon TV



Companionway to Below



Galley Looking Aft



Galley Looking Forward



Galley Looking Aft



Galley Refrigerator



Hidden Microwave



Ample Pull Out Storage



Companionway Looking Forward



Companionway Looking Aft



Companionway Laundry Center



Companionway Linen Locker



Master



Master Looking Forward



Master



Master Head



Stbd. Side Twin Looking Aft



Stbd. Side Twin Looking Forward



Stbd. Guest Head



Stbd. Side Bunk Room

Stbd. Side Bunk Room



VIP Looking Forward



VIP to Stbd.



VIP to Port



VIP Head



Enclosed Bridge Settee



Enclosed Bridge Bar



Helm



Helm to Port



Helm Center



Helm to Stbd.



Port Helm Seat



Captains Stidd Chair



Starboard Helm Seat



Bridge Deck Seating



Aft Control Station



Bridge Deck



Rocket Launcher



Mast



Coach Roof Equipment



Bow



15' Walker Bay



15' Walker Bay



15' Walker Bay



15' Walker Bay



Cockpit



Cockpit



Mezzanine



Mezzanine



Cockpit



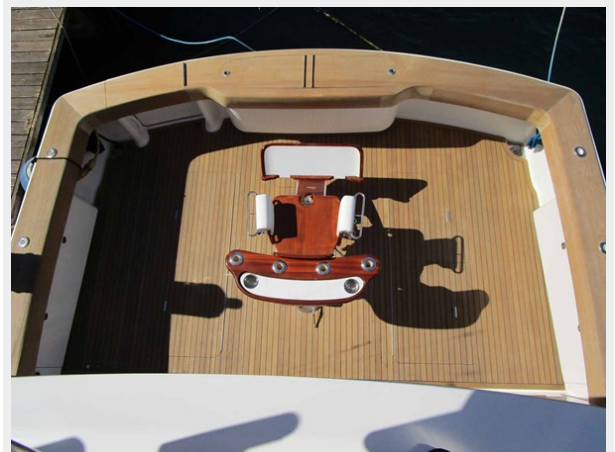
Cockpit



Release Chair



From Above



Mezzanine Seating



Stern shot



Port Engine



Port Engine



Stbd. Engine



Stbd. Engine



Stbd. Engine



A/C Outboard Stbd. Engine



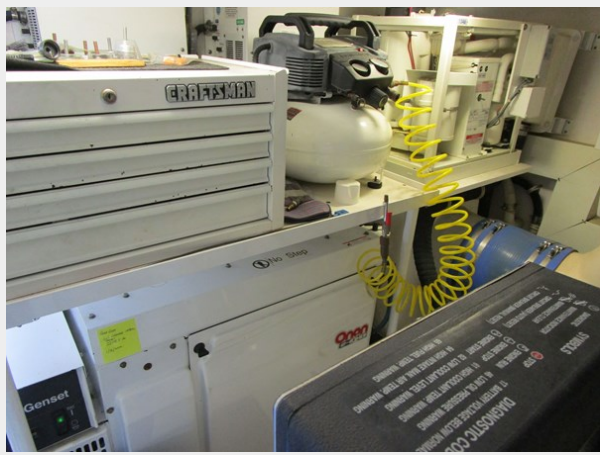
Port Engine



Outboard Port Engine



Port Gen



Stbd Gen



Clean Wake



Stern Quarter



Transom



Bow Quarter



Alternate Profile



Stern Quarter



Profile



CONTACTS

Andrey Shestakov, leading yacht broker of the sales department of Shestakov Yacht Sales Inc. Shestakov Yacht Sales Inc., the official representative of the Miami/Fort Lauderdale FL headquarters.

Contact details

Email: andrey@shestakovyachtsales.com

Web: shestakovyachtsales.com/en/

Telephones

USA: +1(954)274-4435

Office hours

Monday – Saturday: **9:00 - 21:00** EDT

Sunday: **closed**

Address



Harbour Towne Marina, 850 NE 3rd St,
STE 213, Dania, FL 33004