

SALPARE — NAUTOR'S SWAN



Builder: NAUTOR'S SWAN

LOA: 66' (20.12mm)

Year Built: 2010

Beam: 17.68

Model: Cruising Sailboat

Max Draft: 10' 6" (3.2mm)

Price: PRICE ON APPLICATION

Location: Spain

Our experienced yacht broker, Andrey Shestakov, will help you choose and buy a yacht that best suits your needs **Salpare — NAUTOR'S SWAN** from our catalogue. Presently, at Shestakov Yacht Sales Inc., we have a wide variety of yachts available on our sale's list. We also work in close contact with all the big yacht manufacturers from all over the world.

If you would like to buy a yacht **Salpare — NAUTOR'S SWAN** or would like help answering any questions concerning purchasing, selling or chartering a yacht, please call **+1(954)274-4435**

TABLE OF CONTENTS

TABLE OF CONTENTS	2
SPECIFICATIONS	4
Overview	4
Basic Information	4
Dimensions	4
Speed, Capacities and Weight	4
Accommodations	4
Hull and Deck Information	5
Engine Information	5
PHOTOS	6
IMG_20200809_131156	6
IMG_20200830_135927	6
IMG-20190124-WA0004	6
IMG-20190124-WA0003	6
PXL_20210327_221650630	7
IMG-20210515-WA0024	7
PXL_20210720_162915612	7
PXL_20210821_195714489	7
PXL_20211029_114137130	7
PXL_20210721_182309220	7
SALPARE1	8
SALPARE3	8
WhatsApp Image 2020-11-08 at 1.12.35 AM	8
interior-1	8
interior-2	8
interior-3	8
interior-5	9
interior-4	9

interior-6	9
interior-7	9
interior-8	9
interior-9	9
interior-10	10
interior-11	10
interior-13	10
interior-12	10
interior-14	11
interior-15	11
CONTACTS	12
Contact details	12
Telephones	12
Office hours	12
Address	12

SPECIFICATIONS

Overview

This beautiful Swan 66, a masterpiece designed by German Frers, embodies all the traditional Swan characteristics: uncompromising seaworthiness, luxurious comfort and impeccable style in a sleek, modern design. Salpare is the best example of a true performance cruiser. Equipped with every comfort, Salpare is ready for her next owner with first-class materials and first-class performance every time. Her interior offers airy spaces and refined finishes for a luxurious on-board experience. A large sail inventory, the boat has been updated with the latest technologies that make her unique in safety. performance. Needless to say, Salpare has always been maintained by the captain and no expense has been spared to keep her in perfect condition.

Basic Information

Category: Cruising Sailboat

Model Year: 2010

Year Built: 2010

Country: Spain

Dimensions

LOA: 66' (20.12mm)

Beam: 17.68

Max Draft: 10' 6" (3.2mm)

Speed, Capacities and Weight

Water Capacity: 500 Gallons

Holding Tank: 105.67 Gal Gallons

Fuel Capacity: 343.42 Gal Gallons

Accommodations

Total Cabins: 4

Total Heads: 3

Hull and Deck Information

Hull Material: GRP

Hull Color: White

Engine Information

Engines: 1

Manufacturer: Steyr

Engine Type: Inboard

Fuel Type: Diesel

PHOTOS

IMG_20200809_131156



IMG_20200830_135927



IMG-20190124-WA0004



IMG-20190124-WA0003



IMG-20210515-WA0024



PXL_20210327_221650630



PXL_20210720_162915612



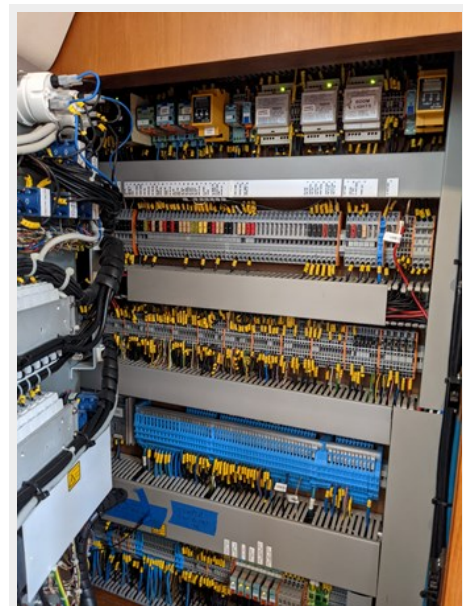
PXL_20210821_195714489



PXL_20210721_182309220



PXL_20211029_114137130



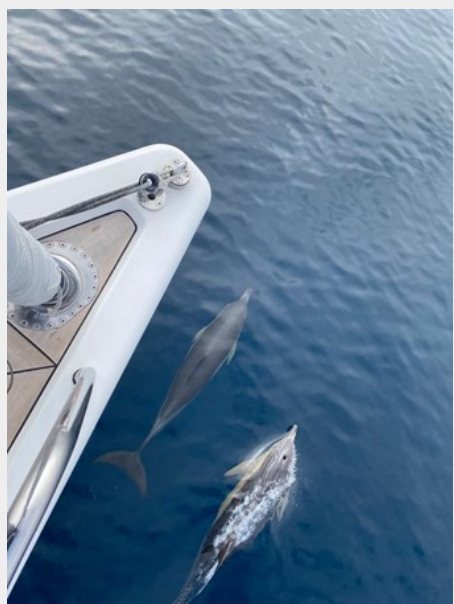
SALPARE1



SALPARE3



WhatsApp Image 2020-11-08 at 1.12.35 AM



interior-1



interior-2



interior-3



interior-4



interior-5



interior-6



interior-7



interior-8



interior-9



interior-10



interior-11



interior-13



interior-12



interior-14



interior-15



CONTACTS

Andrey Shestakov, leading yacht broker of the sales department of Shestakov Yacht Sales Inc. Shestakov Yacht Sales Inc., the official representative of the Miami/Fort Lauderdale FL headquarters.

Contact details

Email: andrey@shestakovyachtsales.com

Web: shestakovyachtsales.com/en/

Telephones

USA: +1(954)274-4435

Office hours

Monday – Saturday: **9:00 - 21:00** EDT

Sunday: **closed**

Address



Harbour Towne Marina, 850 NE 3rd St,
STE 213, Dania, FL 33004